

# 12 AREA OF RESIDENTIAL PROPERTIES IN THE DEVELOPMENT

## 發展項目中的住宅物業的面積

| Description of Residential Property<br>住宅物業的描述 |             |            | Saleable Area<br>(including balcony, utility platform and verandah, if any)<br>sq. metre (sq. ft.)<br>實用面積<br>(包括露台、工作平台及陽台(如有))平方米(平方呎) | Area of other specified items (Not included in the Saleable Area) sq. metre (sq. ft.)<br>其他指明項目的面積(不計算入實用面積)平方米(平方呎) |                  |                |                 |                 |                      |            |                 |               |            |
|--|-------------|------------|--|--|------------------|----------------|-----------------|-----------------|----------------------|------------|-----------------|---------------|------------|
| Block Name<br>大廈名稱                             | Floor<br>樓層 | Flat<br>單位 |  | Air-conditioning<br>Plant Room<br>空調機房   | Bay Window<br>窗台 | Cockloft<br>閣樓 | Flat Roof<br>平台 | Garden<br>花園    | Parking Space<br>停車位 | Roof<br>天台 | Stairhood<br>梯屋 | Terrace<br>前庭 | Yard<br>庭院 |
| Tower 1<br>第1座                                 | G/F<br>地下   | A          | 96.386 (1,037)<br>露台 Balcony: - (-)<br>工作平台 Utility Platform: - (-)  | -  | -                | -              | -               | 73.496<br>(791) | -                    | -          | -               | -             | -          |
|  |             | B          | 75.185 (809)<br>露台 Balcony: - (-)<br>工作平台 Utility Platform: - (-)  | -  | -                | -              | -               | 60.661<br>(653) | -                    | -          | -               | -             | -          |
|  | 1/F<br>1樓   | A          | 98.758 (1,063)<br>露台 Balcony: 2.368 (25)<br>工作平台 Utility Platform: - (-)   | -  | -                | -              | -               | -               | -                    | -          | -               | -             | -          |
|  |             | B          | 77.374 (833)<br>露台 Balcony: 2.189 (24)<br>工作平台 Utility Platform: - (-)   | -  | -                | -              | -               | -               | -                    | -          | -               | -             | -          |
|  |             | C          | 40.742 (439)<br>露台 Balcony: - (-)<br>工作平台 Utility Platform: - (-)  | -  | -                | -              | -               | -               | -                    | -          | -               | -             | -          |
|  |             | E          | 54.383 (585)<br>露台 Balcony: - (-)<br>工作平台 Utility Platform: - (-)  | -  | -                | -              | -               | -               | -                    | -          | -               | -             | -          |
|  | 2/F<br>2樓   | A          | 99.042 (1,066)<br>露台 Balcony: 2.368 (25)<br>工作平台 Utility Platform: - (-)   | -  | -                | -              | -               | -               | -                    | -          | -               | -             | -          |
|  |             | B          | 77.374 (833)<br>露台 Balcony: 2.189 (24)<br>工作平台 Utility Platform: - (-)   | -  | -                | -              | -               | -               | -                    | -          | -               | -             | -          |
|  |             | C          | 40.195 (433)<br>露台 Balcony: - (-)<br>工作平台 Utility Platform: - (-)  | -  | -                | -              | -               | -               | -                    | -          | -               | -             | -          |
|  |             | D          | 40.893 (440)<br>露台 Balcony: - (-)<br>工作平台 Utility Platform: - (-)  | -  | -                | -              | -               | -               | -                    | -          | -               | -             | -          |
|  |             | E          | 53.220 (573)<br>露台 Balcony: - (-)<br>工作平台 Utility Platform: - (-)  | -  | -                | -              | -               | -               | -                    | -          | -               | -             | -          |
|  |             | F          | 42.312 (455)<br>露台 Balcony: 2.092 (23)<br>工作平台 Utility Platform: - (-)   | -  | -                | -              | -               | -               | -                    | -          | -               | -             | -          |

Notes:

- The saleable area and the floor areas of balcony, utility platform and verandah (if any) are calculated in accordance with section 8 of the Residential Properties (First-hand Sales) Ordinance; and the areas of other specified items are calculated in accordance with Part 2 of Schedule 2 of the Residential Properties (First-hand Sales) Ordinance.
- The above areas have been converted to square feet based on a conversion rate of 1 square metre=10.764 square feet and rounded off to the nearest integer.
- 4/F, 13/F and 14/F are omitted.

註:

- 實用面積以及露台、工作平台及陽台(如有)之樓面面積, 是按照《一手住宅物業銷售條例》第8條計算得出的。其他指明項目的面積, 是按照《一手住宅物業銷售條例》附表2第2部計算得出的。
- 上述所列之面積以1平方米=10.764平方呎換算至平方呎, 並四捨五入至整數。
- 不設4樓、13樓及14樓。

AREA OF RESIDENTIAL PROPERTIES IN THE DEVELOPMENT  
發展項目中的住宅物業的面積

12

| Description of Residential Property<br>住宅物業的描述 |                      |            | Saleable Area<br>(including balcony, utility platform and verandah, if any)<br>sq. metre (sq. ft.)<br>實用面積<br>(包括露台、工作平台及陽台(如有))平方米(平方呎) | Area of other specified items (Not included in the Saleable Area) sq. metre (sq. ft.)<br>其他指明項目的面積(不計算入實用面積)平方米(平方呎) |                  |                |                 |              |                      |                 |                 |               |            |
|--|----------------------|------------|--|--|------------------|----------------|-----------------|--------------|----------------------|-----------------|-----------------|---------------|------------|
| Block Name<br>大廈名稱                             | Floor<br>樓層          | Flat<br>單位 |  | Air-conditioning<br>Plant Room<br>空調機房   | Bay Window<br>窗台 | Cockloft<br>閣樓 | Flat Roof<br>平台 | Garden<br>花園 | Parking Space<br>停車位 | Roof<br>天台      | Stairhood<br>梯屋 | Terrace<br>前庭 | Yard<br>庭院 |
| Tower 1<br>第1座                                 | 3/F - 20/F<br>3樓至20樓 | A          | 99.042 (1,066)<br>露台 Balcony: 2.368 (25)<br>工作平台 Utility Platform: - (-)   | -  | -                | -              | -               | -            | -                    | -               | -               | -             | -          |
|  |                      | B          | 77.374 (833)<br>露台 Balcony: 2.189 (24)<br>工作平台 Utility Platform: - (-)   | -  | -                | -              | -               | -            | -                    | -               | -               | -             | -          |
|  |                      | C          | 42.287 (455)<br>露台 Balcony: 2.092 (23)<br>工作平台 Utility Platform: - (-)   | -  | -                | -              | -               | -            | -                    | -               | -               | -             | -          |
|  |                      | D          | 42.985 (463)<br>露台 Balcony: 2.092 (23)<br>工作平台 Utility Platform: - (-)   | -  | -                | -              | -               | -            | -                    | -               | -               | -             | -          |
|  |                      | E          | 55.429 (597)<br>露台 Balcony: 2.208 (24)<br>工作平台 Utility Platform: - (-)   | -  | -                | -              | -               | -            | -                    | -               | -               | -             | -          |
|  |                      | F          | 42.312 (455)<br>露台 Balcony: 2.092 (23)<br>工作平台 Utility Platform: - (-)   | -  | -                | -              | -               | -            | -                    | -               | -               | -             | -          |
|  | 21/F<br>21樓          | A          | 99.042 (1,066)<br>露台 Balcony: 2.368 (25)<br>工作平台 Utility Platform: - (-)   | -  | -                | -              | -               | -            | -                    | 88.628<br>(954) | -               | -             | -          |
|  |                      | B          | 77.374 (833)<br>露台 Balcony: 2.189 (24)<br>工作平台 Utility Platform: - (-)   | -  | -                | -              | -               | -            | -                    | 66.911<br>(720) | -               | -             | -          |
|  |                      | C          | 42.287 (455)<br>露台 Balcony: 2.092 (23)<br>工作平台 Utility Platform: - (-)   | -  | -                | -              | -               | -            | -                    | 36.959<br>(398) | -               | -             | -          |
|  |                      | D          | 42.985 (463)<br>露台 Balcony: 2.092 (23)<br>工作平台 Utility Platform: - (-)   | -  | -                | -              | -               | -            | -                    | 28.047<br>(302) | -               | -             | -          |
|  |                      | E          | 55.429 (597)<br>露台 Balcony: 2.208 (24)<br>工作平台 Utility Platform: - (-)   | -  | -                | -              | -               | -            | -                    | 44.377<br>(478) | -               | -             | -          |
|  |                      | F          | 42.312 (455)<br>露台 Balcony: 2.092 (23)<br>工作平台 Utility Platform: - (-)   | -  | -                | -              | -               | -            | -                    | 36.781<br>(396) | -               | -             | -          |

Notes:

- The saleable area and the floor areas of balcony, utility platform and verandah (if any) are calculated in accordance with section 8 of the Residential Properties (First-hand Sales) Ordinance; and the areas of other specified items are calculated in accordance with Part 2 of Schedule 2 of the Residential Properties (First-hand Sales) Ordinance.
- The above areas have been converted to square feet based on a conversion rate of 1 square metre=10.764 square feet and rounded off to the nearest integer.
- 4/F, 13/F and 14/F are omitted.

註:

- 實用面積以及露台、工作平台及陽台(如有)之樓面面積, 提按照《一手住宅物業銷售條例》第8條計算得出的。其他指明項目的面積, 是按照《一手住宅物業銷售條例》附表2第2部計算得出的。
- 上述所列之面積以1平方米=10.764平方呎換算至平方呎, 並四捨五入至整數。
- 不設4樓、13樓及14樓。

# 12 AREA OF RESIDENTIAL PROPERTIES IN THE DEVELOPMENT

## 發展項目中的住宅物業的面積

| Description of Residential Property<br>住宅物業的描述 |                      |            | Saleable Area<br>(including balcony, utility platform and verandah, if any)<br>sq. metre (sq. ft.)<br>實用面積<br>(包括露台、工作平台及陽台(如有))平方米(平方呎) | Area of other specified items (Not included in the Saleable Area) sq. metre (sq. ft.)<br>其他指明項目的面積(不計算入實用面積)平方米(平方呎) |                  |                |                 |                 |                      |                 |                 |               |            |
|--|----------------------|------------|--|--|------------------|----------------|-----------------|-----------------|----------------------|-----------------|-----------------|---------------|------------|
| Block Name<br>大廈名稱                             | Floor<br>樓層          | Flat<br>單位 |  | Air-conditioning<br>Plant Room<br>空調機房   | Bay Window<br>窗台 | Cockloft<br>閣樓 | Flat Roof<br>平台 | Garden<br>花園    | Parking Space<br>停車位 | Roof<br>天台      | Stairhood<br>梯屋 | Terrace<br>前庭 | Yard<br>庭院 |
| Tower 2<br>第2座                                 | G/F<br>地下            | C          | 75.655 (814)<br>露台 Balcony: - (-)<br>工作平台 Utility Platform: - (-)  | -  | -                | -              | -               | 62.198<br>(669) | -                    | -               | -               | -             | -          |
|  | 1/F<br>1樓            | B          | 75.803 (816)<br>露台 Balcony: 2.484 (27)<br>工作平台 Utility Platform: - (-)   | -  | -                | -              | -               | -               | -                    | -               | -               | -             | -          |
|  |                      | C          | 77.271 (832)<br>露台 Balcony: 2.208 (24)<br>工作平台 Utility Platform: - (-)   | -  | -                | -              | -               | -               | -                    | -               | -               | -             | -          |
|  | 2/F<br>2樓            | A          | 74.088 (797)<br>露台 Balcony: - (-)<br>工作平台 Utility Platform: - (-)  | -  | -                | -              | 16.802<br>(181) | -               | -                    | -               | -               | -             | -          |
|  |                      | B          | 75.786 (816)<br>露台 Balcony: 2.484 (27)<br>工作平台 Utility Platform: - (-)   | -  | -                | -              | -               | -               | -                    | -               | -               | -             | -          |
|  |                      | C          | 77.270 (832)<br>露台 Balcony: 2.208 (24)<br>工作平台 Utility Platform: - (-)   | -  | -                | -              | -               | -               | -                    | -               | -               | -             | -          |
|  | 3/F - 20/F<br>3樓至20樓 | A          | 76.333 (822)<br>露台 Balcony: 2.245 (24)<br>工作平台 Utility Platform: - (-)   | -  | -                | -              | -               | -               | -                    | -               | -               | -             | -          |
|  |                      | B          | 75.786 (816)<br>露台 Balcony: 2.484 (27)<br>工作平台 Utility Platform: - (-)   | -  | -                | -              | -               | -               | -                    | -               | -               | -             | -          |
|  |                      | C          | 77.270 (832)<br>露台 Balcony: 2.208 (24)<br>工作平台 Utility Platform: - (-)   | -  | -                | -              | -               | -               | -                    | -               | -               | -             | -          |
|  | 21/F<br>21樓          | A          | 76.333 (822)<br>露台 Balcony: 2.245 (24)<br>工作平台 Utility Platform: - (-)   | -  | -                | -              | -               | -               | -                    | 54.809<br>(590) | -               | -             | -          |
|  |                      | B          | 75.786 (816)<br>露台 Balcony: 2.484 (27)<br>工作平台 Utility Platform: - (-)   | -  | -                | -              | -               | -               | -                    | 62.736<br>(675) | -               | -             | -          |
|  |                      | C          | 77.270 (832)<br>露台 Balcony: 2.208 (24)<br>工作平台 Utility Platform: - (-)   | -  | -                | -              | -               | -               | -                    | 75.941<br>(817) | -               | -             | -          |

### Notes:

- The saleable area and the floor areas of balcony, utility platform and verandah (if any) are calculated in accordance with section 8 of the Residential Properties (First-hand Sales) Ordinance; and the areas of other specified items are calculated in accordance with Part 2 of Schedule 2 of the Residential Properties (First-hand Sales) Ordinance.
- The above areas have been converted to square feet based on a conversion rate of 1 square metre=10.764 square feet and rounded off to the nearest integer.
- 4/F, 13/F and 14/F are omitted.

### 註:

- 實用面積以及露台、工作平台及陽台(如有)之樓面面積, 提按照《一手住宅物業銷售條例》第8條計算得出的。其他指明項目的面積, 是按照《一手住宅物業銷售條例》附表2第2部計算得出的。
- 上述所列之面積以1平方米=10.764平方呎換算至平方呎, 並四捨五入至整數。
- 不設4樓、13樓及14樓。

AREA OF RESIDENTIAL PROPERTIES IN THE DEVELOPMENT  
發展項目中的住宅物業的面積

12

| Description of Residential Property<br>住宅物業的描述 |             |            | Saleable Area<br>(including balcony, utility platform and verandah, if any)<br>sq. metre (sq. ft.)<br>實用面積<br>(包括露台、工作平台及陽台(如有))平方米(平方呎) | Area of other specified items (Not included in the Saleable Area) sq. metre (sq. ft.)<br>其他指明項目的面積(不計算入實用面積)平方米(平方呎) |                  |                |                 |                 |                      |            |                 |               |            |
|--|-------------|------------|--|--|------------------|----------------|-----------------|-----------------|----------------------|------------|-----------------|---------------|------------|
| Block Name<br>大廈名稱                             | Floor<br>樓層 | Flat<br>單位 |  | Air-conditioning<br>Plant Room<br>空調機房   | Bay Window<br>窗台 | Cockloft<br>閣樓 | Flat Roof<br>平台 | Garden<br>花園    | Parking Space<br>停車位 | Roof<br>天台 | Stairhood<br>梯屋 | Terrace<br>前庭 | Yard<br>庭院 |
| Tower 3<br>第3座                                 | G/F<br>地下   | E          | 54.384 (585)<br>露台 Balcony: - (-)<br>工作平台 Utility Platform: - (-)  | -  | -                | -              | -               | 24.978<br>(269) | -                    | -          | -               | -             | -          |
|  | 1/F<br>1樓   | E          | 53.789 (579)<br>露台 Balcony: - (-)<br>工作平台 Utility Platform: - (-)  | -  | -                | -              | -               | -               | -                    | -          | -               | -             | -          |
|  |             | F          | 42.313 (455)<br>露台 Balcony: 2.092 (23)<br>工作平台 Utility Platform: - (-)   | -  | -                | -              | -               | -               | -                    | -          | -               | -             | -          |
|  | 2/F<br>2樓   | A          | 97.688 (1,052)<br>露台 Balcony: - (-)<br>工作平台 Utility Platform: - (-)  | -  | -                | -              | 3.189<br>(34)   | -               | -                    | -          | -               | -             | -          |
|  |             | B          | 45.442 (489)<br>露台 Balcony: - (-)<br>工作平台 Utility Platform: - (-)  | -  | -                | -              | -               | -               | -                    | -          | -               | -             | -          |
|  |             | C          | 40.152 (432)<br>露台 Balcony: - (-)<br>工作平台 Utility Platform: - (-)  | -  | -                | -              | -               | -               | -                    | -          | -               | -             | -          |
|  |             | D          | 40.892 (440)<br>露台 Balcony: - (-)<br>工作平台 Utility Platform: - (-)  | -  | -                | -              | -               | -               | -                    | -          | -               | -             | -          |
|  |             | E          | 53.221 (573)<br>露台 Balcony: - (-)<br>工作平台 Utility Platform: - (-)  | -  | -                | -              | -               | -               | -                    | -          | -               | -             | -          |
|  |             | F          | 42.313 (455)<br>露台 Balcony: 2.092 (23)<br>工作平台 Utility Platform: - (-)   | -  | -                | -              | -               | -               | -                    | -          | -               | -             | -          |

Notes:

- The saleable area and the floor areas of balcony, utility platform and verandah (if any) are calculated in accordance with section 8 of the Residential Properties (First-hand Sales) Ordinance; and the areas of other specified items are calculated in accordance with Part 2 of Schedule 2 of the Residential Properties (First-hand Sales) Ordinance.
- The above areas have been converted to square feet based on a conversion rate of 1 square metre=10.764 square feet and rounded off to the nearest integer.
- 4/F, 13/F and 14/F are omitted.

註:

- 實用面積以及露台、工作平台及陽台(如有)之樓面面積, 提按照《一手住宅物業銷售條例》第8條計算得出的。其他指明項目的面積, 是按照《一手住宅物業銷售條例》附表2第2部計算得出的。
- 上述所列之面積以1平方米=10.764平方呎換算至平方呎, 並四捨五入至整數。
- 不設4樓、13樓及14樓。

# 12 AREA OF RESIDENTIAL PROPERTIES IN THE DEVELOPMENT

## 發展項目中的住宅物業的面積

| Description of Residential Property<br>住宅物業的描述 |                      |            | Saleable Area<br>(including balcony, utility platform and verandah, if any)<br>sq. metre (sq. ft.)<br>實用面積<br>(包括露台、工作平台及陽台(如有))平方米(平方呎) | Area of other specified items (Not included in the Saleable Area) sq. metre (sq. ft.)<br>其他指明項目的面積(不計算入實用面積)平方米(平方呎) |                  |                |                 |              |                      |                 |                 |               |            |
|--|----------------------|------------|--|--|------------------|----------------|-----------------|--------------|----------------------|-----------------|-----------------|---------------|------------|
| Block Name<br>大廈名稱                             | Floor<br>樓層          | Flat<br>單位 |  | Air-conditioning<br>Plant Room<br>空調機房   | Bay Window<br>窗台 | Cockloft<br>閣樓 | Flat Roof<br>平台 | Garden<br>花園 | Parking Space<br>停車位 | Roof<br>天台      | Stairhood<br>梯屋 | Terrace<br>前庭 | Yard<br>庭院 |
| Tower 3<br>第3座                                 | 3/F - 20/F<br>3樓至20樓 | A          | 100.641 (1,083)<br>露台 Balcony: 2.953 (32)<br>工作平台 Utility Platform: - (-)  | -  | -                | -              | -               | -            | -                    | -               | -               | -             |            |
|  |                      | B          | 45.442 (489)<br>露台 Balcony: - (-)<br>工作平台 Utility Platform: - (-)  | -  | -                | -              | -               | -            | -                    | -               | -               | -             |            |
|  |                      | C          | 42.355 (456)<br>露台 Balcony: 2.203 (24)<br>工作平台 Utility Platform: - (-)   | -  | -                | -              | -               | -            | -                    | -               | -               | -             |            |
|  |                      | D          | 42.985 (463)<br>露台 Balcony: 2.092 (23)<br>工作平台 Utility Platform: - (-)   | -  | -                | -              | -               | -            | -                    | -               | -               | -             |            |
|  |                      | E          | 55.429 (597)<br>露台 Balcony: 2.208 (24)<br>工作平台 Utility Platform: - (-)   | -  | -                | -              | -               | -            | -                    | -               | -               | -             |            |
|  |                      | F          | 42.313 (455)<br>露台 Balcony: 2.092 (23)<br>工作平台 Utility Platform: - (-)   | -  | -                | -              | -               | -            | -                    | -               | -               | -             |            |
|  | 21/F<br>21樓          | A          | 100.641 (1,083)<br>露台 Balcony: 2.953 (32)<br>工作平台 Utility Platform: - (-)  | -  | -                | -              | -               | -            | -                    | 89.418<br>(962) | -               | -             | -          |
|  |                      | B          | 45.442 (489)<br>露台 Balcony: - (-)<br>工作平台 Utility Platform: - (-)  | -  | -                | -              | -               | -            | -                    | 40.548<br>(436) | -               | -             | -          |
|  |                      | C          | 42.355 (456)<br>露台 Balcony: 2.203 (24)<br>工作平台 Utility Platform: - (-)   | -  | -                | -              | -               | -            | -                    | 37.283<br>(401) | -               | -             | -          |
|  |                      | D          | 42.985 (463)<br>露台 Balcony: 2.092 (23)<br>工作平台 Utility Platform: - (-)   | -  | -                | -              | -               | -            | -                    | 25.938<br>(279) | -               | -             | -          |
|  |                      | E          | 55.429 (597)<br>露台 Balcony: 2.208 (24)<br>工作平台 Utility Platform: - (-)   | -  | -                | -              | -               | -            | -                    | 42.964<br>(462) | -               | -             | -          |
|  |                      | F          | 42.313 (455)<br>露台 Balcony: 2.092 (23)<br>工作平台 Utility Platform: - (-)   | -  | -                | -              | -               | -            | -                    | 36.781<br>(396) | -               | -             | -          |

### Notes:

- The saleable area and the floor areas of balcony, utility platform and verandah (if any) are calculated in accordance with section 8 of the Residential Properties (First-hand Sales) Ordinance; and the areas of other specified items are calculated in accordance with Part 2 of Schedule 2 of the Residential Properties (First-hand Sales) Ordinance.
- The above areas have been converted to square feet based on a conversion rate of 1 square metre=10.764 square feet and rounded off to the nearest integer.
- 4/F, 13/F and 14/F are omitted.

### 註:

- 實用面積以及露台、工作平台及陽台(如有)之樓面面積, 是按照《一手住宅物業銷售條例》第8條計算得出的。其他指明項目的面積, 是按照《一手住宅物業銷售條例》附表2第2部計算得出的。
- 上述所列之面積以1平方米=10.764平方呎換算至平方呎, 並四捨五入至整數。
- 不設4樓、13樓及14樓。

AREA OF RESIDENTIAL PROPERTIES IN THE DEVELOPMENT  
發展項目中的住宅物業的面積

12

| Description of Residential Property<br>住宅物業的描述 |                                 |            | Saleable Area<br>(including balcony, utility platform and verandah, if any)<br>sq. metre (sq. ft.)<br>實用面積<br>(包括露台、工作平台及陽台(如有))平方米(平方呎) | Area of other specified items (Not included in the Saleable Area) sq. metre (sq. ft.)<br>其他指明項目的面積(不計入實用面積)平方米(平方呎) |                  |                |                 |                 |                      |            |                 |               |            |
|--|---------------------------------|------------|--|---|------------------|----------------|-----------------|-----------------|----------------------|------------|-----------------|---------------|------------|
| Block Name<br>大廈名稱                             | Floor<br>樓層                     | Flat<br>單位 |  | Air-conditioning<br>Plant Room<br>空調機房  | Bay Window<br>窗台 | Cockloft<br>閣樓 | Flat Roof<br>平台 | Garden<br>花園    | Parking Space<br>停車位 | Roof<br>天台 | Stairhood<br>梯屋 | Terrace<br>前庭 | Yard<br>庭院 |
| Tower 5<br>第5座                                 | G/F & 1/F (Duplex)<br>地下及1樓(複式) | A          | 112.209 (1,208)<br>露台 Balcony: 2.001 (22)<br>工作平台 Utility Platform: - (-)  | -   | -                | -              | -               | 56.430<br>(607) | -                    | -          | -               | -             | -          |
|  |                                 | G          | 104.986 (1,130)<br>露台 Balcony: - (-)<br>工作平台 Utility Platform: - (-)   | -   | -                | -              | -               | 38.932<br>(419) | -                    | -          | -               | -             | -          |
|  | G/F<br>地下                       | H          | 40.501 (436)<br>露台 Balcony: - (-)<br>工作平台 Utility Platform: - (-)  | -   | -                | -              | -               | 26.847<br>(289) | -                    | -          | -               | -             | -          |
|  | 1/F<br>1樓                       | B          | 20.997 (226)<br>露台 Balcony: - (-)<br>工作平台 Utility Platform: - (-)  | -   | -                | -              | 1.826<br>(20)   | -               | -                    | -          | -               | -             | -          |
|  |                                 | C          | 42.567 (458)<br>露台 Balcony: 2.092 (23)<br>工作平台 Utility Platform: - (-)   | -   | -                | -              | -               | -               | -                    | -          | -               | -             | -          |
|  |                                 | D          | 46.557 (501)<br>露台 Balcony: 2.092 (23)<br>工作平台 Utility Platform: - (-)   | -   | -                | -              | -               | -               | -                    | -          | -               | -             | -          |
|  |                                 | E          | 48.935 (527)<br>露台 Balcony: 2.092 (23)<br>工作平台 Utility Platform: - (-)   | -   | -                | -              | -               | -               | -                    | -          | -               | -             | -          |
|  |                                 | H          | 43.258 (466)<br>露台 Balcony: 2.092 (23)<br>工作平台 Utility Platform: - (-)   | -   | -                | -              | -               | -               | -                    | -          | -               | -             | -          |

Notes:

- The saleable area and the floor areas of balcony, utility platform and verandah (if any) are calculated in accordance with section 8 of the Residential Properties (First-hand Sales) Ordinance; and the areas of other specified items are calculated in accordance with Part 2 of Schedule 2 of the Residential Properties (First-hand Sales) Ordinance.
- The above areas have been converted to square feet based on a conversion rate of 1 square metre=10.764 square feet and rounded off to the nearest integer.
- 4/F, 13/F and 14/F are omitted.

註:

- 實用面積以及露台、工作平台及陽台(如有)之樓面面積, 提按照《一手住宅物業銷售條例》第8條計算得出的。其他指明項目的面積, 是按照《一手住宅物業銷售條例》附表2第2部計算得出的。
- 上述所列之面積以1平方米=10.764平方呎換算至平方呎, 並四捨五入至整數。
- 不設4樓、13樓及14樓。



# 12 AREA OF RESIDENTIAL PROPERTIES IN THE DEVELOPMENT

## 發展項目中的住宅物業的面積

| Description of Residential Property<br>住宅物業的描述 |             |            | Saleable Area<br>(including balcony, utility platform and verandah, if any)<br>sq. metre (sq. ft.)<br>實用面積<br>(包括露台、工作平台及陽台(如有))平方米(平方呎) | Area of other specified items (Not included in the Saleable Area) sq. metre (sq. ft.)<br>其他指明項目的面積(不計算入實用面積)平方米(平方呎) |                  |                |                 |              |                      |            |                 |               |            |   |
|--|-------------|------------|--|--|------------------|----------------|-----------------|--------------|----------------------|------------|-----------------|---------------|------------|---|
| Block Name<br>大廈名稱                             | Floor<br>樓層 | Flat<br>單位 |  | Air-conditioning<br>Plant Room<br>空調機房   | Bay Window<br>窗台 | Cockloft<br>閣樓 | Flat Roof<br>平台 | Garden<br>花園 | Parking Space<br>停車位 | Roof<br>天台 | Stairhood<br>梯屋 | Terrace<br>前庭 | Yard<br>庭院 |   |
| Tower 5<br>第5座                                 | 2/F<br>2樓   | A          | 40.844 (440)<br>露台 Balcony: - (-)<br>工作平台 Utility Platform: - (-)  | -  | -                | -              | 6.514<br>(70)   | -            | -                    | -          | -               | -             | -          |   |
|  |             | B          | 23.184 (250)<br>露台 Balcony: 2.036 (22)<br>工作平台 Utility Platform: - (-)   | -  | -                | -              | -               | -            | -                    | -          | -               | -             | -          |   |
|  |             | C          | 42.567 (458)<br>露台 Balcony: 2.092 (23)<br>工作平台 Utility Platform: - (-)   | -  | -                | -              | -               | -            | -                    | -          | -               | -             | -          |   |
|  |             | D          | 46.557 (501)<br>露台 Balcony: 2.092 (23)<br>工作平台 Utility Platform: - (-)   | -  | -                | -              | -               | -            | -                    | -          | -               | -             | -          |   |
|  |             | E          | 48.529 (522)<br>露台 Balcony: 2.092 (23)<br>工作平台 Utility Platform: - (-)   | -  | -                | -              | -               | -            | -                    | -          | -               | -             | -          |   |
|  |             | F          | 28.104 (303)<br>露台 Balcony: - (-)<br>工作平台 Utility Platform: - (-)  | -  | -                | -              | -               | -            | -                    | -          | -               | -             | -          | - |
|  |             | G          | 41.084 (442)<br>露台 Balcony: - (-)<br>工作平台 Utility Platform: - (-)  | -  | -                | -              | 2.767<br>(30)   | -            | -                    | -          | -               | -             | -          |   |
|  |             | H          | 43.258 (466)<br>露台 Balcony: 2.092 (23)<br>工作平台 Utility Platform: - (-)   | -  | -                | -              | -               | -            | -                    | -          | -               | -             | -          |   |

### Notes:

- The saleable area and the floor areas of balcony, utility platform and verandah (if any) are calculated in accordance with section 8 of the Residential Properties (First-hand Sales) Ordinance; and the areas of other specified items are calculated in accordance with Part 2 of Schedule 2 of the Residential Properties (First-hand Sales) Ordinance.
- The above areas have been converted to square feet based on a conversion rate of 1 square metre=10.764 square feet and rounded off to the nearest integer.
- 4/F, 13/F and 14/F are omitted.

### 註:

- 實用面積以及露台、工作平台及陽台(如有)之樓面面積, 是按照《一手住宅物業銷售條例》第8條計算得出的。其他指明項目的面積, 是按照《一手住宅物業銷售條例》附表2第2部計算得出的。
- 上述所列之面積以1平方米=10.764平方呎換算至平方呎, 並四捨五入至整數。
- 不設4樓、13樓及14樓。

AREA OF RESIDENTIAL PROPERTIES IN THE DEVELOPMENT  
發展項目中的住宅物業的面積

12

| Description of Residential Property<br>住宅物業的描述 |                      |            | Saleable Area<br>(including balcony, utility platform and verandah, if any)<br>sq. metre (sq. ft.)<br>實用面積<br>(包括露台、工作平台及陽台(如有))平方米(平方呎) | Area of other specified items (Not included in the Saleable Area) sq. metre (sq. ft.)<br>其他指明項目的面積(不計算入實用面積)平方米(平方呎) |                  |                |                 |              |                      |            |                 |               |            |
|--|----------------------|------------|--|--|------------------|----------------|-----------------|--------------|----------------------|------------|-----------------|---------------|------------|
| Block Name<br>大廈名稱                             | Floor<br>樓層          | Flat<br>單位 |  | Air-conditioning<br>Plant Room<br>空調機房   | Bay Window<br>窗台 | Cockloft<br>閣樓 | Flat Roof<br>平台 | Garden<br>花園 | Parking Space<br>停車位 | Roof<br>天台 | Stairhood<br>梯屋 | Terrace<br>前庭 | Yard<br>庭院 |
| Tower 5<br>第5座                                 | 3/F - 20/F<br>3樓至20樓 | A          | 43.029 (463)<br>露台 Balcony: 2.185 (24)<br>工作平台 Utility Platform: - (-)   | -  | -                | -              | -               | -            | -                    | -          | -               | -             |            |
|  |                      | B          | 23.109 (249)<br>露台 Balcony: 2.036 (22)<br>工作平台 Utility Platform: - (-)   | -  | -                | -              | -               | -            | -                    | -          | -               | -             |            |
|  |                      | C          | 42.567 (458)<br>露台 Balcony: 2.092 (23)<br>工作平台 Utility Platform: - (-)   | -  | -                | -              | -               | -            | -                    | -          | -               | -             |            |
|  |                      | D          | 46.557 (501)<br>露台 Balcony: 2.092 (23)<br>工作平台 Utility Platform: - (-)   | -  | -                | -              | -               | -            | -                    | -          | -               | -             |            |
|  |                      | E          | 48.529 (522)<br>露台 Balcony: 2.092 (23)<br>工作平台 Utility Platform: - (-)   | -  | -                | -              | -               | -            | -                    | -          | -               | -             |            |
|  |                      | F          | 30.197 (325)<br>露台 Balcony: 2.092 (23)<br>工作平台 Utility Platform: - (-)   | -  | -                | -              | -               | -            | -                    | -          | -               | -             |            |
|  |                      | G          | 43.176 (465)<br>露台 Balcony: 2.092 (23)<br>工作平台 Utility Platform: - (-)   | -  | -                | -              | -               | -            | -                    | -          | -               | -             |            |
|  |                      | H          | 43.258 (466)<br>露台 Balcony: 2.092 (23)<br>工作平台 Utility Platform: - (-)   | -  | -                | -              | -               | -            | -                    | -          | -               | -             |            |

Notes:

- The saleable area and the floor areas of balcony, utility platform and verandah (if any) are calculated in accordance with section 8 of the Residential Properties (First-hand Sales) Ordinance; and the areas of other specified items are calculated in accordance with Part 2 of Schedule 2 of the Residential Properties (First-hand Sales) Ordinance.
- The above areas have been converted to square feet based on a conversion rate of 1 square metre=10.764 square feet and rounded off to the nearest integer.
- 4/F, 13/F and 14/F are omitted.

註:

- 實用面積以及露台、工作平台及陽台(如有)之樓面面積, 提按照《一手住宅物業銷售條例》第8條計算得出的。其他指明項目的面積, 是按照《一手住宅物業銷售條例》附表2第2部計算得出的。
- 上述所列之面積以1平方米=10.764平方呎換算至平方呎, 並四捨五入至整數。
- 不設4樓、13樓及14樓。



# 12 AREA OF RESIDENTIAL PROPERTIES IN THE DEVELOPMENT

## 發展項目中的住宅物業的面積

| Description of Residential Property<br>住宅物業的描述 |             |            | Saleable Area<br>(including balcony, utility platform and verandah, if any)<br>sq. metre (sq. ft.)<br>實用面積<br>(包括露台、工作平台及陽台(如有))平方米(平方呎) | Area of other specified items (Not included in the Saleable Area) sq. metre (sq. ft.)<br>其他指明項目的面積(不計算入實用面積)平方米(平方呎) |                  |                |                 |              |                      |            |                 |               |            |
|--|-------------|------------|--|--|------------------|----------------|-----------------|--------------|----------------------|------------|-----------------|---------------|------------|
| Block Name<br>大廈名稱                             | Floor<br>樓層 | Flat<br>單位 |  | Air-conditioning<br>Plant Room<br>空調機房   | Bay Window<br>窗台 | Cockloft<br>閣樓 | Flat Roof<br>平台 | Garden<br>花園 | Parking Space<br>停車位 | Roof<br>天台 | Stairhood<br>梯屋 | Terrace<br>前庭 | Yard<br>庭院 |
| Tower 5<br>第5座                                 | 21/F<br>21樓 | A          | 43.029 (463)<br>露台 Balcony: 2.185 (24)<br>工作平台 Utility Platform: - (-)   | -  | -                | -              | -               | -            | 36.613<br>(394)      | -          | -               | -             |            |
|  |             | B          | 23.109 (249)<br>露台 Balcony: 2.036 (22)<br>工作平台 Utility Platform: - (-)   | -  | -                | -              | -               | -            | 18.382<br>(198)      | -          | -               | -             |            |
|  |             | C          | 42.567 (458)<br>露台 Balcony: 2.092 (23)<br>工作平台 Utility Platform: - (-)   | -  | -                | -              | -               | -            | 36.603<br>(394)      | -          | -               | -             |            |
|  |             | D          | 46.557 (501)<br>露台 Balcony: 2.092 (23)<br>工作平台 Utility Platform: - (-)   | -  | -                | -              | -               | -            | 45.516<br>(490)      | -          | -               | -             |            |
|  |             | E          | 48.529 (522)<br>露台 Balcony: 2.092 (23)<br>工作平台 Utility Platform: - (-)   | -  | -                | -              | -               | -            | 36.151<br>(389)      | -          | -               | -             |            |
|  |             | F          | 30.197 (325)<br>露台 Balcony: 2.092 (23)<br>工作平台 Utility Platform: - (-)   | -  | -                | -              | -               | -            | 20.193<br>(217)      | -          | -               | -             |            |
|  |             | G          | 43.176 (465)<br>露台 Balcony: 2.092 (23)<br>工作平台 Utility Platform: - (-)   | -  | -                | -              | -               | -            | 36.204<br>(390)      | -          | -               | -             |            |
|  |             | H          | 43.258 (466)<br>露台 Balcony: 2.092 (23)<br>工作平台 Utility Platform: - (-)   | -  | -                | -              | -               | -            | 37.138<br>(400)      | -          | -               | -             |            |

Notes:

- The saleable area and the floor areas of balcony, utility platform and verandah (if any) are calculated in accordance with section 8 of the Residential Properties (First-hand Sales) Ordinance; and the areas of other specified items are calculated in accordance with Part 2 of Schedule 2 of the Residential Properties (First-hand Sales) Ordinance.
- The above areas have been converted to square feet based on a conversion rate of 1 square metre=10.764 square feet and rounded off to the nearest integer.
- 4/F, 13/F and 14/F are omitted.

註:

- 實用面積以及露台、工作平台及陽台(如有)之樓面面積, 提按照《一手住宅物業銷售條例》第8條計算得出的。其他指明項目的面積, 是按照《一手住宅物業銷售條例》附表2第2部計算得出的。
- 上述所列之面積以1平方米=10.764平方呎換算至平方呎, 並四捨五入至整數。
- 不設4樓、13樓及14樓。

AREA OF RESIDENTIAL PROPERTIES IN THE DEVELOPMENT  
發展項目中的住宅物業的面積

12

| Description of Residential Property<br>住宅物業的描述 |             |            | Saleable Area<br>(including balcony, utility platform and verandah, if any)<br>sq. metre (sq. ft.)<br>實用面積<br>(包括露台、工作平台及陽台(如有))平方米(平方呎) | Area of other specified items (Not included in the Saleable Area) sq. metre (sq. ft.)<br>其他指明項目的面積(不計算入實用面積)平方米(平方呎) |                  |                |                 |                 |                      |            |                 |               |            |
|--|-------------|------------|--|--|------------------|----------------|-----------------|-----------------|----------------------|------------|-----------------|---------------|------------|
| Block Name<br>大廈名稱                             | Floor<br>樓層 | Flat<br>單位 |  | Air-conditioning<br>Plant Room<br>空調機房   | Bay Window<br>窗台 | Cockloft<br>閣樓 | Flat Roof<br>平台 | Garden<br>花園    | Parking Space<br>停車位 | Roof<br>天台 | Stairhood<br>梯屋 | Terrace<br>前庭 | Yard<br>庭院 |
| Tower 6<br>第6座                                 | G/F<br>地下   | A          | 54.457 (586)<br>露台 Balcony: - (-)<br>工作平台 Utility Platform: - (-)  | -  | -                | -              | -               | 38.827<br>(418) | -                    | -          | -               | -             | -          |
|  |             | B          | 71.587 (771)<br>露台 Balcony: - (-)<br>工作平台 Utility Platform: - (-)  | -  | -                | -              | -               | 49.889<br>(537) | -                    | -          | -               | -             | -          |
|  | 1/F<br>1樓   | A          | 29.391 (316)<br>露台 Balcony: - (-)<br>工作平台 Utility Platform: - (-)  | -  | -                | -              | 12.075<br>(130) | -               | -                    | -          | -               | -             | -          |
|  |             | B          | 46.240 (498)<br>露台 Balcony: - (-)<br>工作平台 Utility Platform: - (-)  | -  | -                | -              | -               | -               | -                    | -          | -               | -             | -          |
|  |             | C          | 21.976 (237)<br>露台 Balcony: - (-)<br>工作平台 Utility Platform: - (-)  | -  | -                | -              | -               | -               | -                    | -          | -               | -             | -          |
|  |             | E          | 40.713 (438)<br>露台 Balcony: - (-)<br>工作平台 Utility Platform: - (-)  | -  | -                | -              | -               | -               | -                    | -          | -               | -             | -          |
|  |             | F          | 46.009 (495)<br>露台 Balcony: 2.092 (23)<br>工作平台 Utility Platform: - (-)   | -  | -                | -              | -               | -               | -                    | -          | -               | -             | -          |
|  |             | G          | 49.013 (528)<br>露台 Balcony: 2.092 (23)<br>工作平台 Utility Platform: - (-)   | -  | -                | -              | -               | -               | -                    | -          | -               | -             | -          |
|  |             | H          | 20.906 (225)<br>露台 Balcony: - (-)<br>工作平台 Utility Platform: - (-)  | -  | -                | -              | 5.310<br>(57)   | -               | -                    | -          | -               | -             | -          |
|  |             | J          | 29.024 (312)<br>露台 Balcony: - (-)<br>工作平台 Utility Platform: - (-)  | -  | -                | -              | 5.910<br>(64)   | -               | -                    | -          | -               | -             | -          |

Notes:

- The saleable area and the floor areas of balcony, utility platform and verandah (if any) are calculated in accordance with section 8 of the Residential Properties (First-hand Sales) Ordinance; and the areas of other specified items are calculated in accordance with Part 2 of Schedule 2 of the Residential Properties (First-hand Sales) Ordinance.
- The above areas have been converted to square feet based on a conversion rate of 1 square metre=10.764 square feet and rounded off to the nearest integer.
- 4/F, 13/F and 14/F are omitted.

註:

- 實用面積以及露台、工作平台及陽台(如有)之樓面面積, 提按照《一手住宅物業銷售條例》第8條計算得出的。其他指明項目的面積, 是按照《一手住宅物業銷售條例》附表2第2部計算得出的。
- 上述所列之面積以1平方米=10.764平方呎換算至平方呎, 並四捨五入至整數。
- 不設4樓、13樓及14樓。

# 12 AREA OF RESIDENTIAL PROPERTIES IN THE DEVELOPMENT

## 發展項目中的住宅物業的面積

| Description of Residential Property<br>住宅物業的描述 |             |            | Saleable Area<br>(including balcony, utility platform and verandah, if any)<br>sq. metre (sq. ft.)<br>實用面積<br>(包括露台、工作平台及陽台(如有))平方米(平方呎) | Area of other specified items (Not included in the Saleable Area) sq. metre (sq. ft.)<br>其他指明項目的面積(不計算入實用面積)平方米(平方呎) |                  |                |                 |              |                      |            |                 |               |            |   |
|--|-------------|------------|--|--|------------------|----------------|-----------------|--------------|----------------------|------------|-----------------|---------------|------------|---|
| Block Name<br>大廈名稱                             | Floor<br>樓層 | Flat<br>單位 |  | Air-conditioning<br>Plant Room<br>空調機房   | Bay Window<br>窗台 | Cockloft<br>閣樓 | Flat Roof<br>平台 | Garden<br>花園 | Parking Space<br>停車位 | Roof<br>天台 | Stairhood<br>梯屋 | Terrace<br>前庭 | Yard<br>庭院 |   |
| Tower 6<br>第6座                                 | 2/F<br>2樓   | A          | 31.483 (339)<br>露台 Balcony: 2.092 (23)<br>工作平台 Utility Platform: - (-)   | -  | -                | -              | -               | -            | -                    | -          | -               | -             | -          |   |
|  |             | B          | 46.240 (498)<br>露台 Balcony: - (-)<br>工作平台 Utility Platform: - (-)  | -  | -                | -              | -               | -            | -                    | -          | -               | -             | -          | - |
|  |             | C          | 21.854 (235)<br>露台 Balcony: - (-)<br>工作平台 Utility Platform: - (-)  | -  | -                | -              | -               | -            | -                    | -          | -               | -             | -          | - |
|  |             | D          | 29.819 (321)<br>露台 Balcony: - (-)<br>工作平台 Utility Platform: - (-)  | -  | -                | -              | -               | -            | -                    | -          | -               | -             | -          | - |
|  |             | E          | 40.118 (432)<br>露台 Balcony: - (-)<br>工作平台 Utility Platform: - (-)  | -  | -                | -              | -               | -            | -                    | -          | -               | -             | -          | - |
|  |             | F          | 46.009 (495)<br>露台 Balcony: 2.092 (23)<br>工作平台 Utility Platform: - (-)   | -  | -                | -              | -               | -            | -                    | -          | -               | -             | -          | - |
|  |             | G          | 49.013 (528)<br>露台 Balcony: 2.092 (23)<br>工作平台 Utility Platform: - (-)   | -  | -                | -              | -               | -            | -                    | -          | -               | -             | -          | - |
|  |             | H          | 22.998 (248)<br>露台 Balcony: 2.092 (23)<br>工作平台 Utility Platform: - (-)   | -  | -                | -              | -               | -            | -                    | -          | -               | -             | -          | - |
|  |             | J          | 31.232 (336)<br>露台 Balcony: 2.208 (24)<br>工作平台 Utility Platform: - (-)   | -  | -                | -              | -               | -            | -                    | -          | -               | -             | -          | - |

### Notes:

- The saleable area and the floor areas of balcony, utility platform and verandah (if any) are calculated in accordance with section 8 of the Residential Properties (First-hand Sales) Ordinance; and the areas of other specified items are calculated in accordance with Part 2 of Schedule 2 of the Residential Properties (First-hand Sales) Ordinance.
- The above areas have been converted to square feet based on a conversion rate of 1 square metre=10.764 square feet and rounded off to the nearest integer.
- 4/F, 13/F and 14/F are omitted.

### 註:

- 實用面積以及露台、工作平台及陽台(如有)之樓面面積, 提按照《一手住宅物業銷售條例》第8條計算得出的。其他指明項目的面積, 是按照《一手住宅物業銷售條例》附表2第2部計算得出的。
- 上述所列之面積以1平方米=10.764平方呎換算至平方呎, 並四捨五入至整數。
- 不設4樓、13樓及14樓。

AREA OF RESIDENTIAL PROPERTIES IN THE DEVELOPMENT  
發展項目中的住宅物業的面積

12

| Description of Residential Property<br>住宅物業的描述 |                      |            | Saleable Area<br>(including balcony, utility platform and verandah, if any)<br>sq. metre (sq. ft.)<br>實用面積<br>(包括露台、工作平台及陽台(如有))平方米(平方呎) | Area of other specified items (Not included in the Saleable Area) sq. metre (sq. ft.)<br>其他指明項目的面積(不計算入實用面積)平方米(平方呎) |                  |                |                 |              |                      |            |                 |               |            |   |   |
|--|----------------------|------------|--|--|------------------|----------------|-----------------|--------------|----------------------|------------|-----------------|---------------|------------|---|---|
| Block Name<br>大廈名稱                             | Floor<br>樓層          | Flat<br>單位 |  | Air-conditioning<br>Plant Room<br>空調機房   | Bay Window<br>窗台 | Cockloft<br>閣樓 | Flat Roof<br>平台 | Garden<br>花園 | Parking Space<br>停車位 | Roof<br>天台 | Stairhood<br>梯屋 | Terrace<br>前庭 | Yard<br>庭院 |   |   |
| Tower 6<br>第6座                                 | 3/F - 20/F<br>3樓至20樓 | A          | 31.483 (339)<br>露台 Balcony: 2.092 (23)<br>工作平台 Utility Platform: - (-)   | -  | -                | -              | -               | -            | -                    | -          | -               | -             | -          |   |   |
|  |                      | B          | 48.205 (519)<br>露台 Balcony: 2.003 (22)<br>工作平台 Utility Platform: - (-)   | -  | -                | -              | -               | -            | -                    | -          | -               | -             | -          | - |   |
|  |                      | C          | 23.944 (258)<br>露台 Balcony: 2.090 (22)<br>工作平台 Utility Platform: - (-)   | -  | -                | -              | -               | -            | -                    | -          | -               | -             | -          | - |   |
|  |                      | D          | 31.958 (344)<br>露台 Balcony: 2.139 (23)<br>工作平台 Utility Platform: - (-)   | -  | -                | -              | -               | -            | -                    | -          | -               | -             | -          | - |   |
|  |                      | E          | 42.130 (453)<br>露台 Balcony: 2.012 (22)<br>工作平台 Utility Platform: - (-)   | -  | -                | -              | -               | -            | -                    | -          | -               | -             | -          | - |   |
|  |                      | F          | 46.009 (495)<br>露台 Balcony: 2.092 (23)<br>工作平台 Utility Platform: - (-)   | -  | -                | -              | -               | -            | -                    | -          | -               | -             | -          | - | - |
|  |                      | G          | 49.013 (528)<br>露台 Balcony: 2.092 (23)<br>工作平台 Utility Platform: - (-)   | -  | -                | -              | -               | -            | -                    | -          | -               | -             | -          | - | - |
|  |                      | H          | 22.998 (248)<br>露台 Balcony: 2.092 (23)<br>工作平台 Utility Platform: - (-)   | -  | -                | -              | -               | -            | -                    | -          | -               | -             | -          | - | - |
|  |                      | J          | 31.232 (336)<br>露台 Balcony: 2.208 (24)<br>工作平台 Utility Platform: - (-)   | -  | -                | -              | -               | -            | -                    | -          | -               | -             | -          | - | - |

Notes:

- The saleable area and the floor areas of balcony, utility platform and verandah (if any) are calculated in accordance with section 8 of the Residential Properties (First-hand Sales) Ordinance; and the areas of other specified items are calculated in accordance with Part 2 of Schedule 2 of the Residential Properties (First-hand Sales) Ordinance.
- The above areas have been converted to square feet based on a conversion rate of 1 square metre=10.764 square feet and rounded off to the nearest integer.
- 4/F, 13/F and 14/F are omitted.

註:

- 實用面積以及露台、工作平台及陽台(如有)之樓面面積, 提按照《一手住宅物業銷售條例》第8條計算得出的。其他指明項目的面積, 是按照《一手住宅物業銷售條例》附表2第2部計算得出的。
- 上述所列之面積以1平方米=10.764平方呎換算至平方呎, 並四捨五入至整數。
- 不設4樓、13樓及14樓。

# 12 AREA OF RESIDENTIAL PROPERTIES IN THE DEVELOPMENT

## 發展項目中的住宅物業的面積

| Description of Residential Property<br>住宅物業的描述 |             |            | Saleable Area<br>(including balcony, utility platform and verandah, if any)<br>sq. metre (sq. ft.)<br>實用面積<br>(包括露台、工作平台及陽台(如有))平方米(平方呎) | Area of other specified items (Not included in the Saleable Area) sq. metre (sq. ft.)<br>其他指明項目的面積(不計算入實用面積)平方米(平方呎) |                  |                |                 |              |                      |            |                 |               |            |
|--|-------------|------------|--|--|------------------|----------------|-----------------|--------------|----------------------|------------|-----------------|---------------|------------|
| Block Name<br>大廈名稱                             | Floor<br>樓層 | Flat<br>單位 |  | Air-conditioning<br>Plant Room<br>空調機房   | Bay Window<br>窗台 | Cockloft<br>閣樓 | Flat Roof<br>平台 | Garden<br>花園 | Parking Space<br>停車位 | Roof<br>天台 | Stairhood<br>梯屋 | Terrace<br>前庭 | Yard<br>庭院 |
| Tower 6<br>第6座                                 | 21/F<br>21樓 | A          | 31.483 (339)<br>露台 Balcony: 2.092 (23)<br>工作平台 Utility Platform: - (-)   | -  | -                | -              | -               | -            | 26.375<br>(284)      | -          | -               | -             |            |
|  |             | B          | 48.205 (519)<br>露台 Balcony: 2.003 (22)<br>工作平台 Utility Platform: - (-)   | -  | -                | -              | -               | -            | 43.073<br>(464)      | -          | -               | -             |            |
|  |             | C          | 23.944 (258)<br>露台 Balcony: 2.090 (22)<br>工作平台 Utility Platform: - (-)   | -  | -                | -              | -               | -            | 20.197<br>(217)      | -          | -               | -             |            |
|  |             | D          | 31.958 (344)<br>露台 Balcony: 2.139 (23)<br>工作平台 Utility Platform: - (-)   | -  | -                | -              | -               | -            | 19.267<br>(207)      | -          | -               | -             |            |
|  |             | E          | 42.130 (453)<br>露台 Balcony: 2.012 (22)<br>工作平台 Utility Platform: - (-)   | -  | -                | -              | -               | -            | 36.994<br>(398)      | -          | -               | -             |            |
|  |             | F          | 46.009 (495)<br>露台 Balcony: 2.092 (23)<br>工作平台 Utility Platform: - (-)   | -  | -                | -              | -               | -            | 42.474<br>(457)      | -          | -               | -             |            |
|  |             | G          | 49.013 (528)<br>露台 Balcony: 2.092 (23)<br>工作平台 Utility Platform: - (-)   | -  | -                | -              | -               | -            | 42.410<br>(457)      | -          | -               | -             |            |
|  |             | H          | 22.998 (248)<br>露台 Balcony: 2.092 (23)<br>工作平台 Utility Platform: - (-)   | -  | -                | -              | -               | -            | 18.495<br>(199)      | -          | -               | -             |            |
|  |             | J          | 31.232 (336)<br>露台 Balcony: 2.208 (24)<br>工作平台 Utility Platform: - (-)   | -  | -                | -              | -               | -            | 26.392<br>(284)      | -          | -               | -             |            |

### Notes:

- The saleable area and the floor areas of balcony, utility platform and verandah (if any) are calculated in accordance with section 8 of the Residential Properties (First-hand Sales) Ordinance; and the areas of other specified items are calculated in accordance with Part 2 of Schedule 2 of the Residential Properties (First-hand Sales) Ordinance.
- The above areas have been converted to square feet based on a conversion rate of 1 square metre=10.764 square feet and rounded off to the nearest integer.
- 4/F, 13/F and 14/F are omitted.

### 註:

- 實用面積以及露台、工作平台及陽台(如有)之樓面面積, 提按照《一手住宅物業銷售條例》第8條計算得出的。其他指明項目的面積, 是按照《一手住宅物業銷售條例》附表2第2部計算得出的。
- 上述所列之面積以1平方米=10.764平方呎換算至平方呎, 並四捨五入至整數。
- 不設4樓、13樓及14樓。

AREA OF RESIDENTIAL PROPERTIES IN THE DEVELOPMENT  
發展項目中的住宅物業的面積

12

| Description of Residential Property<br>住宅物業的描述 |                                 |            | Saleable Area<br>(including balcony, utility platform and verandah, if any)<br>sq. metre (sq. ft.)<br>實用面積<br>(包括露台、工作平台及陽台(如有))平方米(平方呎) | Area of other specified items (Not included in the Saleable Area) sq. metre (sq. ft.)<br>其他指明項目的面積(不計算入實用面積)平方米(平方呎) |                  |                |                 |                    |                      |            |                 |               |            |   |
|--|---------------------------------|------------|--|--|------------------|----------------|-----------------|--------------------|----------------------|------------|-----------------|---------------|------------|---|
| Block Name<br>大廈名稱                             | Floor<br>樓層                     | Flat<br>單位 |  | Air-conditioning<br>Plant Room<br>空調機房   | Bay Window<br>窗台 | Cockloft<br>閣樓 | Flat Roof<br>平台 | Garden<br>花園       | Parking Space<br>停車位 | Roof<br>天台 | Stairhood<br>梯屋 | Terrace<br>前庭 | Yard<br>庭院 |   |
| Tower 7<br>第7座                                 | G/F & 1/F (Duplex)<br>地下及1樓(複式) | A          | 142.514 (1,534)<br>露台 Balcony: - (-)<br>工作平台 Utility Platform: - (-)   | -  | -                | -              | -               | 110.607<br>(1,191) | -                    | -          | -               | -             | -          |   |
|  |                                 | B          | 98.010 (1,055)<br>露台 Balcony: - (-)<br>工作平台 Utility Platform: - (-)  | -  | -                | -              | -               | 25.421<br>(274)    | -                    | -          | -               | -             | -          |   |
|  |                                 | G          | 111.906 (1,205)<br>露台 Balcony: 2.092 (23)<br>工作平台 Utility Platform: - (-)  | -  | -                | -              | -               | 45.821<br>(493)    | -                    | -          | -               | -             | -          |   |
|  | G/F<br>地下                       | F          | 60.665 (653)<br>露台 Balcony: - (-)<br>工作平台 Utility Platform: - (-)  | -  | -                | -              | -               | 25.766<br>(277)    | -                    | -          | -               | -             | -          |   |
|  | 1/F<br>1樓                       | F          | 60.746 (654)<br>露台 Balcony: - (-)<br>工作平台 Utility Platform: - (-)  | -  | -                | -              | -               | -                  | -                    | -          | -               | -             | -          |   |
|  | 2/F<br>2樓                       | A          | 62.448 (672)<br>露台 Balcony: - (-)<br>工作平台 Utility Platform: - (-)  | -  | -                | -              | -               | -                  | -                    | -          | -               | -             | -          | - |
|  |                                 | B          | 40.739 (439)<br>露台 Balcony: - (-)<br>工作平台 Utility Platform: - (-)  | -  | -                | -              | -               | -                  | -                    | -          | -               | -             | -          | - |
|  |                                 | E          | 40.286 (434)<br>露台 Balcony: - (-)<br>工作平台 Utility Platform: - (-)  | -  | -                | -              | -               | -                  | -                    | -          | -               | -             | -          | - |
|  |                                 | F          | 46.646 (502)<br>露台 Balcony: - (-)<br>工作平台 Utility Platform: - (-)  | -  | -                | -              | -               | -                  | -                    | -          | -               | -             | -          | - |
|  |                                 | G          | 49.085 (528)<br>露台 Balcony: 2.092 (23)<br>工作平台 Utility Platform: - (-)   | -  | -                | -              | -               | -                  | -                    | -          | -               | -             | -          | - |

Notes:

- The saleable area and the floor areas of balcony, utility platform and verandah (if any) are calculated in accordance with section 8 of the Residential Properties (First-hand Sales) Ordinance; and the areas of other specified items are calculated in accordance with Part 2 of Schedule 2 of the Residential Properties (First-hand Sales) Ordinance.
- The above areas have been converted to square feet based on a conversion rate of 1 square metre=10.764 square feet and rounded off to the nearest integer.
- 4/F, 13/F and 14/F are omitted.

註:

- 實用面積以及露台、工作平台及陽台(如有)之樓面面積, 是按照《一手住宅物業銷售條例》第8條計算得出的。其他指明項目的面積, 是按照《一手住宅物業銷售條例》附表2第2部計算得出的。
- 上述所列之面積以1平方米=10.764平方呎換算至平方呎, 並四捨五入至整數。
- 不設4樓、13樓及14樓。



# 12 AREA OF RESIDENTIAL PROPERTIES IN THE DEVELOPMENT

## 發展項目中的住宅物業的面積

| Description of Residential Property<br>住宅物業的描述 |                                     |            | Saleable Area<br>(including balcony, utility platform and verandah, if any)<br>sq. metre (sq. ft.)<br>實用面積<br>(包括露台、工作平台及陽台(如有))平方米(平方呎) | Area of other specified items (Not included in the Saleable Area) sq. metre (sq. ft.)<br>其他指明項目的面積(不計算入實用面積)平方米(平方呎) |                  |                |                 |              |                      |                   |                 |               |            |   |
|--|-------------------------------------|------------|--|--|------------------|----------------|-----------------|--------------|----------------------|-------------------|-----------------|---------------|------------|---|
| Block Name<br>大廈名稱                             | Floor<br>樓層                         | Flat<br>單位 |  | Air-conditioning<br>Plant Room<br>空調機房   | Bay Window<br>窗台 | Cockloft<br>閣樓 | Flat Roof<br>平台 | Garden<br>花園 | Parking Space<br>停車位 | Roof<br>天台        | Stairhood<br>梯屋 | Terrace<br>前庭 | Yard<br>庭院 |   |
| Tower 7<br>第7座                                 | 3/F - 19/F<br>3樓至19樓                | A          | 64.658 (696)<br>露台 Balcony: 2.210 (24)<br>工作平台 Utility Platform: - (-)   | -  | -                | -              | -               | -            | -                    | -                 | -               | -             |            |   |
|  |                                     | B          | 42.995 (463)<br>露台 Balcony: 2.256 (24)<br>工作平台 Utility Platform: - (-)   | -  | -                | -              | -               | -            | -                    | -                 | -               | -             |            |   |
|  |                                     | C          | 55.440 (597)<br>露台 Balcony: 2.135 (23)<br>工作平台 Utility Platform: - (-)   | -  | -                | -              | -               | -            | -                    | -                 | -               | -             | -          |   |
|  |                                     | D          | 55.273 (595)<br>露台 Balcony: 2.210 (24)<br>工作平台 Utility Platform: - (-)   | -  | -                | -              | -               | -            | -                    | -                 | -               | -             | -          |   |
|  |                                     | E          | 42.515 (458)<br>露台 Balcony: 2.135 (23)<br>工作平台 Utility Platform: - (-)   | -  | -                | -              | -               | -            | -                    | -                 | -               | -             | -          |   |
|  |                                     | F          | 48.903 (526)<br>露台 Balcony: 2.256 (24)<br>工作平台 Utility Platform: - (-)   | -  | -                | -              | -               | -            | -                    | -                 | -               | -             | -          | - |
|  |                                     | G          | 49.085 (528)<br>露台 Balcony: 2.092 (23)<br>工作平台 Utility Platform: - (-)   | -  | -                | -              | -               | -            | -                    | -                 | -               | -             | -          | - |
|  | 20/F & 21/F (Duplex)<br>20樓及21樓(複式) | A          | 218.074 (2,347)<br>露台 Balcony: 6.237 (67)<br>工作平台 Utility Platform: - (-)  | -  | -                | -              | 49.443<br>(532) | -            | -                    | 94.563<br>(1,018) | 0.640<br>(7)    | -             | -          |   |
|  |                                     | B          | 140.356 (1,511)<br>露台 Balcony: 5.056 (54)<br>工作平台 Utility Platform: - (-)  | -  | -                | -              | 18.522<br>(199) | -            | -                    | 49.117<br>(529)   | 0.640<br>(7)    | -             | -          |   |
|  |                                     | C          | 153.814 (1,656)<br>露台 Balcony: 5.058 (54)<br>工作平台 Utility Platform: - (-)  | -  | -                | -              | 29.504<br>(318) | -            | -                    | 69.693<br>(750)   | 0.640<br>(7)    | -             | -          |   |

### Notes:

- The saleable area and the floor areas of balcony, utility platform and verandah (if any) are calculated in accordance with section 8 of the Residential Properties (First-hand Sales) Ordinance; and the areas of other specified items are calculated in accordance with Part 2 of Schedule 2 of the Residential Properties (First-hand Sales) Ordinance.
- The above areas have been converted to square feet based on a conversion rate of 1 square metre=10.764 square feet and rounded off to the nearest integer.
- 4/F, 13/F and 14/F are omitted.

### 註:

- 實用面積以及露台、工作平台及陽台(如有)之樓面面積, 是根據《一手住宅物業銷售條例》第8條計算得出的。其他指明項目的面積, 是根據《一手住宅物業銷售條例》附表2第2部計算得出的。
- 上述所列之面積以1平方米=10.764平方呎換算至平方呎, 並四捨五入至整數。
- 不設4樓、13樓及14樓。

AREA OF RESIDENTIAL PROPERTIES IN THE DEVELOPMENT  
發展項目中的住宅物業的面積

12

| Description of Residential Property<br>住宅物業的描述 |                                 |            | Saleable Area<br>(including balcony, utility platform and verandah, if any)<br>sq. metre (sq. ft.)<br>實用面積<br>(包括露台、工作平台及陽台(如有))平方米(平方呎) | Area of other specified items (Not included in the Saleable Area) sq. metre (sq. ft.)<br>其他指明項目的面積(不計算入實用面積)平方米(平方呎) |                  |                |                 |                 |                      |            |                 |               |            |
|--|---------------------------------|------------|--|--|------------------|----------------|-----------------|-----------------|----------------------|------------|-----------------|---------------|------------|
| Block Name<br>大廈名稱                             | Floor<br>樓層                     | Flat<br>單位 |  | Air-conditioning<br>Plant Room<br>空調機房   | Bay Window<br>窗台 | Cockloft<br>閣樓 | Flat Roof<br>平台 | Garden<br>花園    | Parking Space<br>停車位 | Roof<br>天台 | Stairhood<br>梯屋 | Terrace<br>前庭 | Yard<br>庭院 |
| Tower 8<br>第8座                                 | G/F & 1/F (Duplex)<br>地下及1樓(複式) | A          | 146.598 (1,578)<br>露台 Balcony: - (-)<br>工作平台 Utility Platform: - (-)   | -  | -                | -              | 6.119<br>(66)   | 88.971<br>(958) | -                    | -          | -               | -             | -          |
|  |                                 | B          | 135.581 (1,459)<br>露台 Balcony: - (-)<br>工作平台 Utility Platform: - (-)   | -  | -                | -              | 8.742<br>(94)   | 59.413<br>(640) | -                    | -          | -               | -             | -          |
|  |                                 | D          | 123.147 (1,326)<br>露台 Balcony: - (-)<br>工作平台 Utility Platform: - (-)   | -  | -                | -              | 2.952<br>(32)   | 78.688<br>(847) | -                    | -          | -               | -             | -          |
|  | G/F<br>地下                       | G          | 53.742 (578)<br>露台 Balcony: - (-)<br>工作平台 Utility Platform: - (-)  | -  | -                | -              | -               | 21.125<br>(227) | -                    | -          | -               | -             | -          |
|  |                                 | H          | 84.502 (910)<br>露台 Balcony: - (-)<br>工作平台 Utility Platform: - (-)  | -  | -                | -              | -               | 46.311<br>(498) | -                    | -          | -               | -             | -          |
|  | 1/F<br>1樓                       | E          | 53.541 (576)<br>露台 Balcony: - (-)<br>工作平台 Utility Platform: - (-)  | -  | -                | -              | -               | -               | -                    | -          | -               | -             | -          |
|  |                                 | G          | 53.209 (573)<br>露台 Balcony: - (-)<br>工作平台 Utility Platform: - (-)  | -  | -                | -              | -               | -               | -                    | -          | -               | -             | -          |
|  |                                 | H          | 45.505 (490)<br>露台 Balcony: - (-)<br>工作平台 Utility Platform: - (-)  | -  | -                | -              | 3.589<br>(39)   | -               | -                    | -          | -               | -             | -          |
|  |                                 | J          | 29.673 (319)<br>露台 Balcony: - (-)<br>工作平台 Utility Platform: - (-)  | -  | -                | -              | 3.769<br>(41)   | -               | -                    | -          | -               | -             | -          |

Notes:

- The saleable area and the floor areas of balcony, utility platform and verandah (if any) are calculated in accordance with section 8 of the Residential Properties (First-hand Sales) Ordinance; and the areas of other specified items are calculated in accordance with Part 2 of Schedule 2 of the Residential Properties (First-hand Sales) Ordinance.
- The above areas have been converted to square feet based on a conversion rate of 1 square metre=10.764 square feet and rounded off to the nearest integer.
- 4/F, 13/F and 14/F are omitted.

註:

- 實用面積以及露台、工作平台及陽台(如有)之樓面面積, 提按照《一手住宅物業銷售條例》第8條計算得出的。其他指明項目的面積, 是按照《一手住宅物業銷售條例》附表2第2部計算得出的。
- 上述所列之面積以1平方米=10.764平方呎換算至平方呎, 並四捨五入至整數。
- 不設4樓、13樓及14樓。

# 12 AREA OF RESIDENTIAL PROPERTIES IN THE DEVELOPMENT

## 發展項目中的住宅物業的面積

| Description of Residential Property<br>住宅物業的描述 |             |            | Saleable Area<br>(including balcony, utility platform and verandah, if any)<br>sq. metre (sq. ft.)<br>實用面積<br>(包括露台、工作平台及陽台(如有))平方米(平方呎) | Area of other specified items (Not included in the Saleable Area) sq. metre (sq. ft.)<br>其他指明項目的面積(不計算入實用面積)平方米(平方呎) |                  |                |                 |              |                      |            |                 |               |            |   |
|--|-------------|------------|--|--|------------------|----------------|-----------------|--------------|----------------------|------------|-----------------|---------------|------------|---|
| Block Name<br>大廈名稱                             | Floor<br>樓層 | Flat<br>單位 |  | Air-conditioning<br>Plant Room<br>空調機房   | Bay Window<br>窗台 | Cockloft<br>閣樓 | Flat Roof<br>平台 | Garden<br>花園 | Parking Space<br>停車位 | Roof<br>天台 | Stairhood<br>梯屋 | Terrace<br>前庭 | Yard<br>庭院 |   |
| Tower 8<br>第8座                                 | 2/F<br>2樓   | A          | 66.308 (714)<br>露台 Balcony: 2.012 (22)<br>工作平台 Utility Platform: - (-)   | -  | -                | -              | -               | -            | -                    | -          | -               | -             | -          |   |
|  |             | B          | 32.674 (352)<br>露台 Balcony: 2.375 (26)<br>工作平台 Utility Platform: - (-)   | -  | -                | -              | -               | -            | -                    | -          | -               | -             | -          | - |
|  |             | C          | 27.646 (298)<br>露台 Balcony: 2.021 (22)<br>工作平台 Utility Platform: - (-)   | -  | -                | -              | -               | -            | -                    | -          | -               | -             | -          | - |
|  |             | D          | 55.671 (599)<br>露台 Balcony: 2.366 (25)<br>工作平台 Utility Platform: - (-)   | -  | -                | -              | -               | -            | -                    | -          | -               | -             | -          | - |
|  |             | E          | 53.063 (571)<br>露台 Balcony: - (-)<br>工作平台 Utility Platform: - (-)  | -  | -                | -              | -               | -            | -                    | -          | -               | -             | -          | - |
|  |             | F          | 40.380 (435)<br>露台 Balcony: - (-)<br>工作平台 Utility Platform: - (-)  | -  | -                | -              | -               | -            | -                    | -          | -               | -             | -          | - |
|  |             | G          | 40.478 (436)<br>露台 Balcony: - (-)<br>工作平台 Utility Platform: - (-)  | -  | -                | -              | -               | -            | -                    | -          | -               | -             | -          | - |
|  |             | H          | 47.597 (512)<br>露台 Balcony: 2.092 (23)<br>工作平台 Utility Platform: - (-)   | -  | -                | -              | -               | -            | -                    | -          | -               | -             | -          | - |
|  |             | J          | 31.764 (342)<br>露台 Balcony: 2.092 (23)<br>工作平台 Utility Platform: - (-)   | -  | -                | -              | -               | -            | -                    | -          | -               | -             | -          | - |

### Notes:

- The saleable area and the floor areas of balcony, utility platform and verandah (if any) are calculated in accordance with section 8 of the Residential Properties (First-hand Sales) Ordinance; and the areas of other specified items are calculated in accordance with Part 2 of Schedule 2 of the Residential Properties (First-hand Sales) Ordinance.
- The above areas have been converted to square feet based on a conversion rate of 1 square metre=10.764 square feet and rounded off to the nearest integer.
- 4/F, 13/F and 14/F are omitted.

### 註:

- 實用面積以及露台、工作平台及陽台(如有)之樓面面積, 是按照《一手住宅物業銷售條例》第8條計算得出的。其他指明項目的面積, 是按照《一手住宅物業銷售條例》附表2第2部計算得出的。
- 上述所列之面積以1平方米=10.764平方呎換算至平方呎, 並四捨五入至整數。
- 不設4樓、13樓及14樓。

AREA OF RESIDENTIAL PROPERTIES IN THE DEVELOPMENT  
發展項目中的住宅物業的面積

12

| Description of Residential Property<br>住宅物業的描述 |                                     |            | Saleable Area<br>(including balcony, utility platform and verandah, if any)<br>sq. metre (sq. ft.)<br>實用面積<br>(包括露台、工作平台及陽台(如有))平方米(平方呎) | Area of other specified items (Not included in the Saleable Area) sq. metre (sq. ft.)<br>其他指明項目的面積(不計算入實用面積)平方米(平方呎) |                  |                |                 |              |                      |                 |                 |               |            |
|--|-------------------------------------|------------|--|--|------------------|----------------|-----------------|--------------|----------------------|-----------------|-----------------|---------------|------------|
| Block Name<br>大廈名稱                             | Floor<br>樓層                         | Flat<br>單位 |  | Air-conditioning<br>Plant Room<br>空調機房   | Bay Window<br>窗台 | Cockloft<br>閣樓 | Flat Roof<br>平台 | Garden<br>花園 | Parking Space<br>停車位 | Roof<br>天台      | Stairhood<br>梯屋 | Terrace<br>前庭 | Yard<br>庭院 |
| Tower 8<br>第8座                                 | 3/F - 19/F<br>3樓至19樓                | A          | 66.308 (714)<br>露台 Balcony: 2.012 (22)<br>工作平台 Utility Platform: - (-)   | -  | -                | -              | -               | -            | -                    | -               | -               | -             | -          |
|  |                                     | B          | 32.674 (352)<br>露台 Balcony: 2.375 (26)<br>工作平台 Utility Platform: - (-)   | -  | -                | -              | -               | -            | -                    | -               | -               | -             | -          |
|  |                                     | C          | 27.646 (298)<br>露台 Balcony: 2.021 (22)<br>工作平台 Utility Platform: - (-)   | -  | -                | -              | -               | -            | -                    | -               | -               | -             | -          |
|  |                                     | D          | 55.671 (599)<br>露台 Balcony: 2.366 (25)<br>工作平台 Utility Platform: - (-)   | -  | -                | -              | -               | -            | -                    | -               | -               | -             | -          |
|  |                                     | E          | 55.273 (595)<br>露台 Balcony: 2.210 (24)<br>工作平台 Utility Platform: - (-)   | -  | -                | -              | -               | -            | -                    | -               | -               | -             | -          |
|  |                                     | F          | 42.392 (456)<br>露台 Balcony: 2.012 (22)<br>工作平台 Utility Platform: - (-)   | -  | -                | -              | -               | -            | -                    | -               | -               | -             | -          |
|  |                                     | G          | 42.853 (461)<br>露台 Balcony: 2.375 (26)<br>工作平台 Utility Platform: - (-)   | -  | -                | -              | -               | -            | -                    | -               | -               | -             | -          |
|  |                                     | H          | 47.597 (512)<br>露台 Balcony: 2.092 (23)<br>工作平台 Utility Platform: - (-)   | -  | -                | -              | -               | -            | -                    | -               | -               | -             | -          |
|  |                                     | J          | 31.764 (342)<br>露台 Balcony: 2.092 (23)<br>工作平台 Utility Platform: - (-)   | -  | -                | -              | -               | -            | -                    | -               | -               | -             | -          |
|  | 20/F & 21/F (Duplex)<br>20樓及21樓(複式) | A          | 218.891 (2,356)<br>露台 Balcony: 6.599 (71)<br>工作平台 Utility Platform: - (-)  | -  | -                | -              | 68.297<br>(735) | -            | -                    | 85.170<br>(917) | 0.640<br>(7)    | -             | -          |
|  |                                     | B          | 142.336 (1,532)<br>露台 Balcony: 6.085 (65)<br>工作平台 Utility Platform: - (-)  | -  | -                | -              | 18.877<br>(203) | -            | -                    | 53.366<br>(574) | 0.640<br>(7)    | -             | -          |
|  |                                     | C          | 158.701 (1,708)<br>露台 Balcony: 6.020 (65)<br>工作平台 Utility Platform: - (-)  | -  | -                | -              | 55.002<br>(592) | -            | -                    | 73.617<br>(792) | 0.640<br>(7)    | -             | -          |

Notes:

- The saleable area and the floor areas of balcony, utility platform and verandah (if any) are calculated in accordance with section 8 of the Residential Properties (First-hand Sales) Ordinance; and the areas of other specified items are calculated in accordance with Part 2 of Schedule 2 of the Residential Properties (First-hand Sales) Ordinance.
- The above areas have been converted to square feet based on a conversion rate of 1 square metre=10.764 square feet and rounded off to the nearest integer.
- 4/F, 13/F and 14/F are omitted.

註:

- 實用面積以及露台、工作平台及陽台(如有)之樓面面積, 提按照《一手住宅物業銷售條例》第8條計算得出的。其他指明項目的面積, 是按照《一手住宅物業銷售條例》附表2第2部計算得出的。
- 上述所列之面積以1平方米=10.764平方呎換算至平方呎, 並四捨五入至整數。
- 不設4樓、13樓及14樓。

# 12 AREA OF RESIDENTIAL PROPERTIES IN THE DEVELOPMENT

## 發展項目中的住宅物業的面積

| Description of Residential Property<br>住宅物業的描述 |                                 |            | Saleable Area<br>(including balcony, utility platform and verandah, if any)<br>sq. metre (sq. ft.)<br>實用面積<br>(包括露台、工作平台及陽台(如有))平方米(平方呎) | Area of other specified items (Not included in the Saleable Area) sq. metre (sq. ft.)<br>其他指明項目的面積(不計算入實用面積)平方米(平方呎) |                  |                |                 |                 |                      |            |                 |               |            |
|--|---------------------------------|------------|--|--|------------------|----------------|-----------------|-----------------|----------------------|------------|-----------------|---------------|------------|
| Block Name<br>大廈名稱                             | Floor<br>樓層                     | Flat<br>單位 |  | Air-conditioning<br>Plant Room<br>空調機房   | Bay Window<br>窗台 | Cockloft<br>閣樓 | Flat Roof<br>平台 | Garden<br>花園    | Parking Space<br>停車位 | Roof<br>天台 | Stairhood<br>梯屋 | Terrace<br>前庭 | Yard<br>庭院 |
| Tower 9<br>第9座                                 | G/F & 1/F (Duplex)<br>地下及1樓(複式) | B          | 110.480 (1,189)<br>露台 Balcony: - (-)<br>工作平台 Utility Platform: - (-)   | -  | -                | -              | -               | 20.013<br>(215) | -                    | -          | -               | -             | -          |
|  | 2/F<br>2樓                       | A          | 31.483 (339)<br>露台 Balcony: 2.092 (23)<br>工作平台 Utility Platform: - (-)   | -  | -                | -              | -               | -               | -                    | -          | -               | -             | -          |
|  |                                 | B          | 46.240 (498)<br>露台 Balcony: - (-)<br>工作平台 Utility Platform: - (-)  | -  | -                | -              | -               | -               | -                    | -          | -               | -             | -          |
|  |                                 | C          | 21.854 (235)<br>露台 Balcony: - (-)<br>工作平台 Utility Platform: - (-)  | -  | -                | -              | -               | -               | -                    | -          | -               | -             | -          |
|  |                                 | D          | 29.819 (321)<br>露台 Balcony: - (-)<br>工作平台 Utility Platform: - (-)  | -  | -                | -              | -               | -               | -                    | -          | -               | -             | -          |
|  |                                 | E          | 40.118 (432)<br>露台 Balcony: - (-)<br>工作平台 Utility Platform: - (-)  | -  | -                | -              | -               | -               | -                    | -          | -               | -             | -          |
|  |                                 | F          | 43.917 (473)<br>露台 Balcony: - (-)<br>工作平台 Utility Platform: - (-)  | -  | -                | -              | 18.809<br>(202) | -               | -                    | -          | -               | -             | -          |
|  |                                 | G          | 46.921 (505)<br>露台 Balcony: - (-)<br>工作平台 Utility Platform: - (-)  | -  | -                | -              | 8.947<br>(96)   | -               | -                    | -          | -               | -             | -          |
|  |                                 | H          | 22.998 (248)<br>露台 Balcony: 2.092 (23)<br>工作平台 Utility Platform: - (-)   | -  | -                | -              | -               | -               | -                    | -          | -               | -             | -          |
|  |                                 | J          | 29.024 (312)<br>露台 Balcony: - (-)<br>工作平台 Utility Platform: - (-)  | -  | -                | -              | 10.289<br>(111) | -               | -                    | -          | -               | -             | -          |

### Notes:

- The saleable area and the floor areas of balcony, utility platform and verandah (if any) are calculated in accordance with section 8 of the Residential Properties (First-hand Sales) Ordinance; and the areas of other specified items are calculated in accordance with Part 2 of Schedule 2 of the Residential Properties (First-hand Sales) Ordinance.
- The above areas have been converted to square feet based on a conversion rate of 1 square metre=10.764 square feet and rounded off to the nearest integer.
- 4/F, 13/F and 14/F are omitted.

### 註:

- 實用面積以及露台、工作平台及陽台(如有)之樓面面積, 是根據《一手住宅物業銷售條例》第8條計算得出的。其他指明項目的面積, 是根據《一手住宅物業銷售條例》附表2第2部計算得出的。
- 上述所列之面積以1平方米=10.764平方呎換算至平方呎, 並四捨五入至整數。
- 不設4樓、13樓及14樓。

AREA OF RESIDENTIAL PROPERTIES IN THE DEVELOPMENT  
發展項目中的住宅物業的面積

12

| Description of Residential Property<br>住宅物業的描述 |                      |            | Saleable Area<br>(including balcony, utility platform and verandah, if any)<br>sq. metre (sq. ft.)<br>實用面積<br>(包括露台、工作平台及陽台(如有))平方米(平方呎) | Area of other specified items (Not included in the Saleable Area) sq. metre (sq. ft.)<br>其他指明項目的面積(不計算入實用面積)平方米(平方呎) |                  |                |                 |              |                      |            |                 |               |            |   |   |
|--|----------------------|------------|--|--|------------------|----------------|-----------------|--------------|----------------------|------------|-----------------|---------------|------------|---|---|
| Block Name<br>大廈名稱                             | Floor<br>樓層          | Flat<br>單位 |  | Air-conditioning<br>Plant Room<br>空調機房   | Bay Window<br>窗台 | Cockloft<br>閣樓 | Flat Roof<br>平台 | Garden<br>花園 | Parking Space<br>停車位 | Roof<br>天台 | Stairhood<br>梯屋 | Terrace<br>前庭 | Yard<br>庭院 |   |   |
| Tower 9<br>第9座                                 | 3/F - 20/F<br>3樓至20樓 | A          | 31.483 (339)<br>露台 Balcony: 2.092 (23)<br>工作平台 Utility Platform: - (-)   | -  | -                | -              | -               | -            | -                    | -          | -               | -             | -          |   |   |
|  |                      | B          | 48.205 (519)<br>露台 Balcony: 2.003 (22)<br>工作平台 Utility Platform: - (-)   | -  | -                | -              | -               | -            | -                    | -          | -               | -             | -          | - |   |
|  |                      | C          | 23.944 (258)<br>露台 Balcony: 2.090 (22)<br>工作平台 Utility Platform: - (-)   | -  | -                | -              | -               | -            | -                    | -          | -               | -             | -          | - |   |
|  |                      | D          | 31.958 (344)<br>露台 Balcony: 2.139 (23)<br>工作平台 Utility Platform: - (-)   | -  | -                | -              | -               | -            | -                    | -          | -               | -             | -          | - |   |
|  |                      | E          | 42.130 (453)<br>露台 Balcony: 2.012 (22)<br>工作平台 Utility Platform: - (-)   | -  | -                | -              | -               | -            | -                    | -          | -               | -             | -          | - |   |
|  |                      | F          | 46.009 (495)<br>露台 Balcony: 2.092 (23)<br>工作平台 Utility Platform: - (-)   | -  | -                | -              | -               | -            | -                    | -          | -               | -             | -          | - | - |
|  |                      | G          | 49.013 (528)<br>露台 Balcony: 2.092 (23)<br>工作平台 Utility Platform: - (-)   | -  | -                | -              | -               | -            | -                    | -          | -               | -             | -          | - | - |
|  |                      | H          | 22.998 (248)<br>露台 Balcony: 2.092 (23)<br>工作平台 Utility Platform: - (-)   | -  | -                | -              | -               | -            | -                    | -          | -               | -             | -          | - | - |
|  |                      | J          | 31.232 (336)<br>露台 Balcony: 2.208 (24)<br>工作平台 Utility Platform: - (-)   | -  | -                | -              | -               | -            | -                    | -          | -               | -             | -          | - | - |

Notes:

- The saleable area and the floor areas of balcony, utility platform and verandah (if any) are calculated in accordance with section 8 of the Residential Properties (First-hand Sales) Ordinance; and the areas of other specified items are calculated in accordance with Part 2 of Schedule 2 of the Residential Properties (First-hand Sales) Ordinance.
- The above areas have been converted to square feet based on a conversion rate of 1 square metre=10.764 square feet and rounded off to the nearest integer.
- 4/F, 13/F and 14/F are omitted.

註:

- 實用面積以及露台、工作平台及陽台(如有)之樓面面積, 提按照《一手住宅物業銷售條例》第8條計算得出的。其他指明項目的面積, 是按照《一手住宅物業銷售條例》附表2第2部計算得出的。
- 上述所列之面積以1平方米=10.764平方呎換算至平方呎, 並四捨五入至整數。
- 不設4樓、13樓及14樓。



# 12 AREA OF RESIDENTIAL PROPERTIES IN THE DEVELOPMENT

## 發展項目中的住宅物業的面積

| Description of Residential Property<br>住宅物業的描述 |             |            | Saleable Area<br>(including balcony, utility platform and verandah, if any)<br>sq. metre (sq. ft.)<br>實用面積<br>(包括露台、工作平台及陽台(如有))平方米(平方呎) | Area of other specified items (Not included in the Saleable Area) sq. metre (sq. ft.)<br>其他指明項目的面積(不計算入實用面積)平方米(平方呎) |                  |                |                 |              |                      |            |                 |               |            |
|--|-------------|------------|--|--|------------------|----------------|-----------------|--------------|----------------------|------------|-----------------|---------------|------------|
| Block Name<br>大廈名稱                             | Floor<br>樓層 | Flat<br>單位 |  | Air-conditioning<br>Plant Room<br>空調機房   | Bay Window<br>窗台 | Cockloft<br>閣樓 | Flat Roof<br>平台 | Garden<br>花園 | Parking Space<br>停車位 | Roof<br>天台 | Stairhood<br>梯屋 | Terrace<br>前庭 | Yard<br>庭院 |
| Tower 9<br>第9座                                 | 21/F<br>21樓 | A          | 31.483 (339)<br>露台 Balcony: 2.092 (23)<br>工作平台 Utility Platform: - (-)   | -  | -                | -              | -               | -            | 26.375<br>(284)      | -          | -               | -             |            |
|  |             | B          | 48.205 (519)<br>露台 Balcony: 2.003 (22)<br>工作平台 Utility Platform: - (-)   | -  | -                | -              | -               | -            | 43.073<br>(464)      | -          | -               | -             |            |
|  |             | C          | 23.944 (258)<br>露台 Balcony: 2.090 (22)<br>工作平台 Utility Platform: - (-)   | -  | -                | -              | -               | -            | 20.197<br>(217)      | -          | -               | -             |            |
|  |             | D          | 31.958 (344)<br>露台 Balcony: 2.139 (23)<br>工作平台 Utility Platform: - (-)   | -  | -                | -              | -               | -            | 19.267<br>(207)      | -          | -               | -             |            |
|  |             | E          | 42.130 (453)<br>露台 Balcony: 2.012 (22)<br>工作平台 Utility Platform: - (-)   | -  | -                | -              | -               | -            | 36.994<br>(398)      | -          | -               | -             |            |
|  |             | F          | 46.009 (495)<br>露台 Balcony: 2.092 (23)<br>工作平台 Utility Platform: - (-)   | -  | -                | -              | -               | -            | 42.099<br>(453)      | -          | -               | -             |            |
|  |             | G          | 49.013 (528)<br>露台 Balcony: 2.092 (23)<br>工作平台 Utility Platform: - (-)   | -  | -                | -              | -               | -            | 42.408<br>(456)      | -          | -               | -             |            |
|  |             | H          | 22.998 (248)<br>露台 Balcony: 2.092 (23)<br>工作平台 Utility Platform: - (-)   | -  | -                | -              | -               | -            | 18.495<br>(199)      | -          | -               | -             |            |
|  |             | J          | 31.232 (336)<br>露台 Balcony: 2.208 (24)<br>工作平台 Utility Platform: - (-)   | -  | -                | -              | -               | -            | 26.393<br>(284)      | -          | -               | -             |            |

Notes:

- The saleable area and the floor areas of balcony, utility platform and verandah (if any) are calculated in accordance with section 8 of the Residential Properties (First-hand Sales) Ordinance; and the areas of other specified items are calculated in accordance with Part 2 of Schedule 2 of the Residential Properties (First-hand Sales) Ordinance.
- The above areas have been converted to square feet based on a conversion rate of 1 square metre=10.764 square feet and rounded off to the nearest integer.
- 4/F, 13/F and 14/F are omitted.

註:

- 實用面積以及露台、工作平台及陽台(如有)之樓面面積, 提按照《一手住宅物業銷售條例》第8條計算得出的。其他指明項目的面積, 是按照《一手住宅物業銷售條例》附表2第2部計算得出的。
- 上述所列之面積以1平方米=10.764平方呎換算至平方呎, 並四捨五入至整數。
- 不設4樓、13樓及14樓。

AREA OF RESIDENTIAL PROPERTIES IN THE DEVELOPMENT  
發展項目中的住宅物業的面積

12

| Description of Residential Property<br>住宅物業的描述 |             |            | Saleable Area<br>(including balcony, utility platform and verandah, if any)<br>sq. metre (sq. ft.)<br>實用面積<br>(包括露台、工作平台及陽台(如有))平方米(平方呎) | Area of other specified items (Not included in the Saleable Area) sq. metre (sq. ft.)<br>其他指明項目的面積(不計算入實用面積)平方米(平方呎) |                  |                |                 |              |                      |            |                 |               |            |
|--|-------------|------------|--|--|------------------|----------------|-----------------|--------------|----------------------|------------|-----------------|---------------|------------|
| Block Name<br>大廈名稱                             | Floor<br>樓層 | Flat<br>單位 |  | Air-conditioning<br>Plant Room<br>空調機房   | Bay Window<br>窗台 | Cockloft<br>閣樓 | Flat Roof<br>平台 | Garden<br>花園 | Parking Space<br>停車位 | Roof<br>天台 | Stairhood<br>梯屋 | Terrace<br>前庭 | Yard<br>庭院 |
| Tower 10<br>第10座                               | 2/F<br>2樓   | A          | 40.844 (440)<br>露台 Balcony: - (-)<br>工作平台 Utility Platform: - (-)  | -  | -                | -              | 9.092<br>(98)   | -            | -                    | -          | -               | -             | -          |
|  |             | B          | 23.184 (250)<br>露台 Balcony: 2.036 (22)<br>工作平台 Utility Platform: - (-)   | -  | -                | -              | -               | -            | -                    | -          | -               | -             | -          |
|  |             | C          | 40.474 (436)<br>露台 Balcony: - (-)<br>工作平台 Utility Platform: - (-)  | -  | -                | -              | -               | -            | -                    | -          | -               | -             | -          |
|  |             | D          | 44.464 (479)<br>露台 Balcony: - (-)<br>工作平台 Utility Platform: - (-)  | -  | -                | -              | -               | -            | -                    | -          | -               | -             | -          |
|  |             | E          | 46.437 (500)<br>露台 Balcony: - (-)<br>工作平台 Utility Platform: - (-)  | -  | -                | -              | -               | -            | -                    | -          | -               | -             | -          |
|  |             | F          | 28.105 (303)<br>露台 Balcony: - (-)<br>工作平台 Utility Platform: - (-)  | -  | -                | -              | -               | -            | -                    | -          | -               | -             | -          |
|  |             | G          | 41.084 (442)<br>露台 Balcony: - (-)<br>工作平台 Utility Platform: - (-)  | -  | -                | -              | -               | -            | -                    | -          | -               | -             | -          |
|  |             | H          | 41.166 (443)<br>露台 Balcony: - (-)<br>工作平台 Utility Platform: - (-)  | -  | -                | -              | 11.497<br>(124) | -            | -                    | -          | -               | -             | -          |

Notes:

- The saleable area and the floor areas of balcony, utility platform and verandah (if any) are calculated in accordance with section 8 of the Residential Properties (First-hand Sales) Ordinance; and the areas of other specified items are calculated in accordance with Part 2 of Schedule 2 of the Residential Properties (First-hand Sales) Ordinance.
- The above areas have been converted to square feet based on a conversion rate of 1 square metre=10.764 square feet and rounded off to the nearest integer.
- 4/F, 13/F and 14/F are omitted.

註:

- 實用面積以及露台、工作平台及陽台(如有)之樓面面積, 是按照《一手住宅物業銷售條例》第8條計算得出的。其他指明項目的面積, 是按照《一手住宅物業銷售條例》附表2第2部計算得出的。
- 上述所列之面積以1平方米=10.764平方呎換算至平方呎, 並四捨五入至整數。
- 不設4樓、13樓及14樓。

# 12 AREA OF RESIDENTIAL PROPERTIES IN THE DEVELOPMENT

## 發展項目中的住宅物業的面積

| Description of Residential Property<br>住宅物業的描述 |                      |            | Saleable Area<br>(including balcony, utility platform and verandah, if any)<br>sq. metre (sq. ft.)<br>實用面積<br>(包括露台、工作平台及陽台(如有))平方米(平方呎) | Area of other specified items (Not included in the Saleable Area) sq. metre (sq. ft.)<br>其他指明項目的面積(不計算入實用面積)平方米(平方呎) |                  |                |                 |              |                      |            |                 |               |            |
|--|----------------------|------------|--|--|------------------|----------------|-----------------|--------------|----------------------|------------|-----------------|---------------|------------|
| Block Name<br>大廈名稱                             | Floor<br>樓層          | Flat<br>單位 |  | Air-conditioning<br>Plant Room<br>空調機房   | Bay Window<br>窗台 | Cockloft<br>閣樓 | Flat Roof<br>平台 | Garden<br>花園 | Parking Space<br>停車位 | Roof<br>天台 | Stairhood<br>梯屋 | Terrace<br>前庭 | Yard<br>庭院 |
| Tower 10<br>第10座                               | 3/F - 20/F<br>3樓至20樓 | A          | 43.029 (463)<br>露台 Balcony: 2.185 (24)<br>工作平台 Utility Platform: - (-)   | -  | -                | -              | -               | -            | -                    | -          | -               | -             |            |
|  |                      | B          | 23.109 (249)<br>露台 Balcony: 2.036 (22)<br>工作平台 Utility Platform: - (-)   | -  | -                | -              | -               | -            | -                    | -          | -               | -             |            |
|  |                      | C          | 42.566 (458)<br>露台 Balcony: 2.092 (23)<br>工作平台 Utility Platform: - (-)   | -  | -                | -              | -               | -            | -                    | -          | -               | -             |            |
|  |                      | D          | 46.557 (501)<br>露台 Balcony: 2.092 (23)<br>工作平台 Utility Platform: - (-)   | -  | -                | -              | -               | -            | -                    | -          | -               | -             |            |
|  |                      | E          | 48.529 (522)<br>露台 Balcony: 2.092 (23)<br>工作平台 Utility Platform: - (-)   | -  | -                | -              | -               | -            | -                    | -          | -               | -             |            |
|  |                      | F          | 30.197 (325)<br>露台 Balcony: 2.092 (23)<br>工作平台 Utility Platform: - (-)   | -  | -                | -              | -               | -            | -                    | -          | -               | -             |            |
|  |                      | G          | 43.176 (465)<br>露台 Balcony: 2.092 (23)<br>工作平台 Utility Platform: - (-)   | -  | -                | -              | -               | -            | -                    | -          | -               | -             |            |
|  |                      | H          | 43.258 (466)<br>露台 Balcony: 2.092 (23)<br>工作平台 Utility Platform: - (-)   | -  | -                | -              | -               | -            | -                    | -          | -               | -             |            |

### Notes:

- The saleable area and the floor areas of balcony, utility platform and verandah (if any) are calculated in accordance with section 8 of the Residential Properties (First-hand Sales) Ordinance; and the areas of other specified items are calculated in accordance with Part 2 of Schedule 2 of the Residential Properties (First-hand Sales) Ordinance.
- The above areas have been converted to square feet based on a conversion rate of 1 square metre=10.764 square feet and rounded off to the nearest integer.
- 4/F, 13/F and 14/F are omitted.

### 註:

- 實用面積以及露台、工作平台及陽台(如有)之樓面面積, 提按照《一手住宅物業銷售條例》第8條計算得出的。其他指明項目的面積, 是按照《一手住宅物業銷售條例》附表2第2部計算得出的。
- 上述所列之面積以1平方米=10.764平方呎換算至平方呎, 並四捨五入至整數。
- 不設4樓、13樓及14樓。

# AREA OF RESIDENTIAL PROPERTIES IN THE DEVELOPMENT 發展項目中的住宅物業的面積

# 12

| Description of Residential Property<br>住宅物業的描述 |             |            | Saleable Area<br>(including balcony, utility platform and verandah, if any)<br>sq. metre (sq. ft.)<br>實用面積<br>(包括露台、工作平台及陽台(如有))平方米(平方呎) | Area of other specified items (Not included in the Saleable Area) sq. metre (sq. ft.)<br>其他指明項目的面積(不計算入實用面積)平方米(平方呎) |                  |                |                 |              |                      |            |                 |               |            |
|--|-------------|------------|--|--|------------------|----------------|-----------------|--------------|----------------------|------------|-----------------|---------------|------------|
| Block Name<br>大廈名稱                             | Floor<br>樓層 | Flat<br>單位 |  | Air-conditioning<br>Plant Room<br>空調機房   | Bay Window<br>窗台 | Cockloft<br>閣樓 | Flat Roof<br>平台 | Garden<br>花園 | Parking Space<br>停車位 | Roof<br>天台 | Stairhood<br>梯屋 | Terrace<br>前庭 | Yard<br>庭院 |
| Tower 10<br>第10座                               | 21/F<br>21樓 | A          | 43.029 (463)<br>露台 Balcony: 2.185 (24)<br>工作平台 Utility Platform: - (-)   | -  | -                | -              | -               | -            | 36.613<br>(394)      | -          | -               | -             |            |
|  |             | B          | 23.109 (249)<br>露台 Balcony: 2.036 (22)<br>工作平台 Utility Platform: - (-)   | -  | -                | -              | -               | -            | 18.382<br>(198)      | -          | -               | -             |            |
|  |             | C          | 42.566 (458)<br>露台 Balcony: 2.092 (23)<br>工作平台 Utility Platform: - (-)   | -  | -                | -              | -               | -            | 36.603<br>(394)      | -          | -               | -             |            |
|  |             | D          | 46.557 (501)<br>露台 Balcony: 2.092 (23)<br>工作平台 Utility Platform: - (-)   | -  | -                | -              | -               | -            | 45.516<br>(490)      | -          | -               | -             |            |
|  |             | E          | 48.529 (522)<br>露台 Balcony: 2.092 (23)<br>工作平台 Utility Platform: - (-)   | -  | -                | -              | -               | -            | 36.133<br>(389)      | -          | -               | -             |            |
|  |             | F          | 30.197 (325)<br>露台 Balcony: 2.092 (23)<br>工作平台 Utility Platform: - (-)   | -  | -                | -              | -               | -            | 20.193<br>(217)      | -          | -               | -             |            |
|  |             | G          | 43.176 (465)<br>露台 Balcony: 2.092 (23)<br>工作平台 Utility Platform: - (-)   | -  | -                | -              | -               | -            | 36.204<br>(390)      | -          | -               | -             |            |
|  |             | H          | 43.258 (466)<br>露台 Balcony: 2.092 (23)<br>工作平台 Utility Platform: - (-)   | -  | -                | -              | -               | -            | 37.138<br>(400)      | -          | -               | -             |            |

**Notes:**

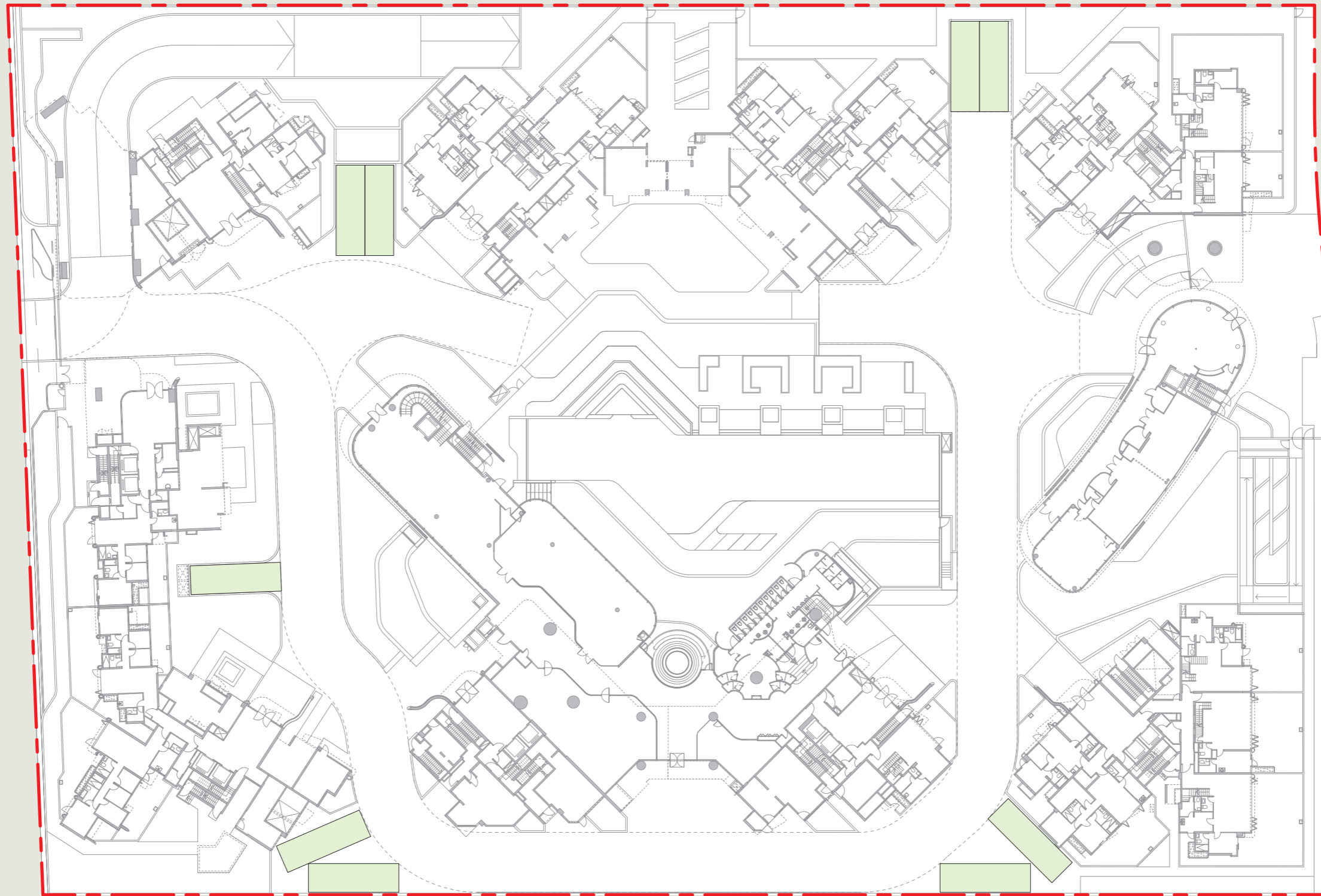
- The saleable area and the floor areas of balcony, utility platform and verandah (if any) are calculated in accordance with section 8 of the Residential Properties (First-hand Sales) Ordinance; and the areas of other specified items are calculated in accordance with Part 2 of Schedule 2 of the Residential Properties (First-hand Sales) Ordinance.
- The above areas have been converted to square feet based on a conversion rate of 1 square metre=10.764 square feet and rounded off to the nearest integer.
- 4/F, 13/F and 14/F are omitted.

**註:**

- 實用面積以及露台、工作平台及陽台(如有)之樓面面積, 提按照《一手住宅物業銷售條例》第8條計算得出的。其他指明項目的面積, 是按照《一手住宅物業銷售條例》附表2第2部計算得出的。
- 上述所列之面積以1平方米=10.764平方呎換算至平方呎, 並四捨五入至整數。
- 不設4樓、13樓及14樓。

# 13 FLOOR PLANS OF PARKING SPACES IN THE DEVELOPMENT 發展項目中的停車位的樓面平面圖

G/F 地下



Boundary line of the Development  
發展項目的邊界

Scale 比例  
0m/米 25m/米

Residential loading and unloading space  
住客上落貨車停車位