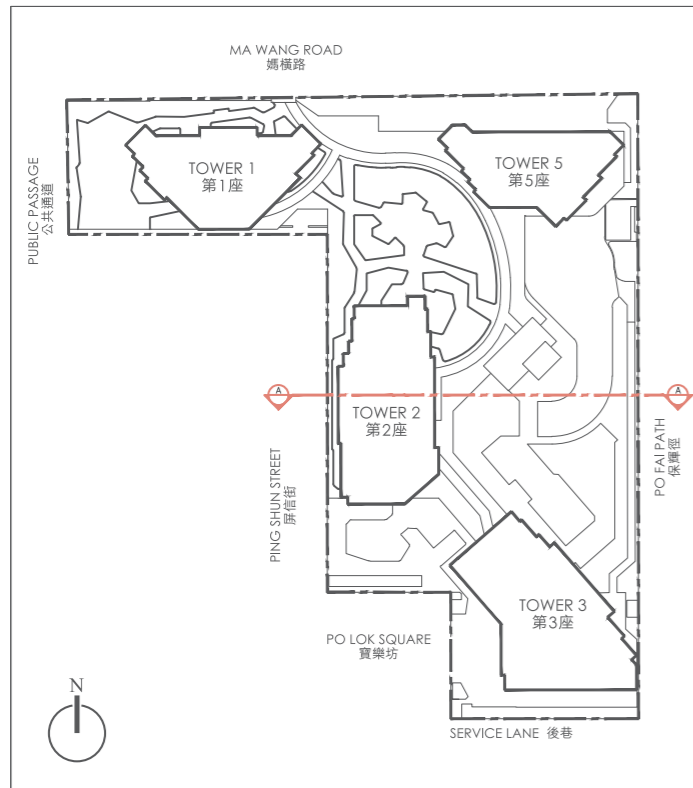
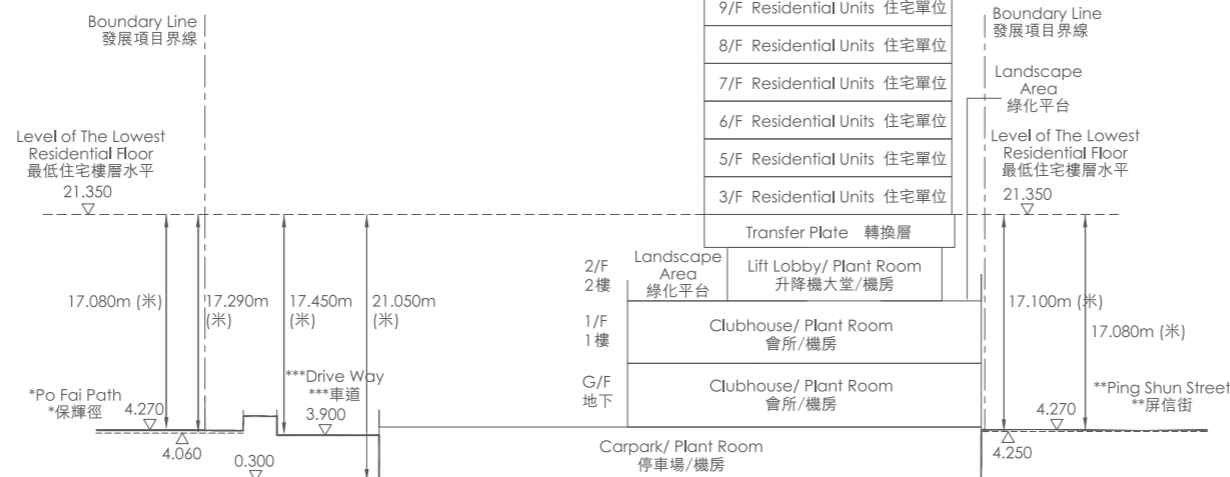


19 CROSS-SECTION PLAN OF BUILDING IN THE PHASE 期數中的建築物的橫截面圖



Key Plan 索引圖

Tower 2 第2座



CROSS SECTION PLAN A 橫截面圖 A

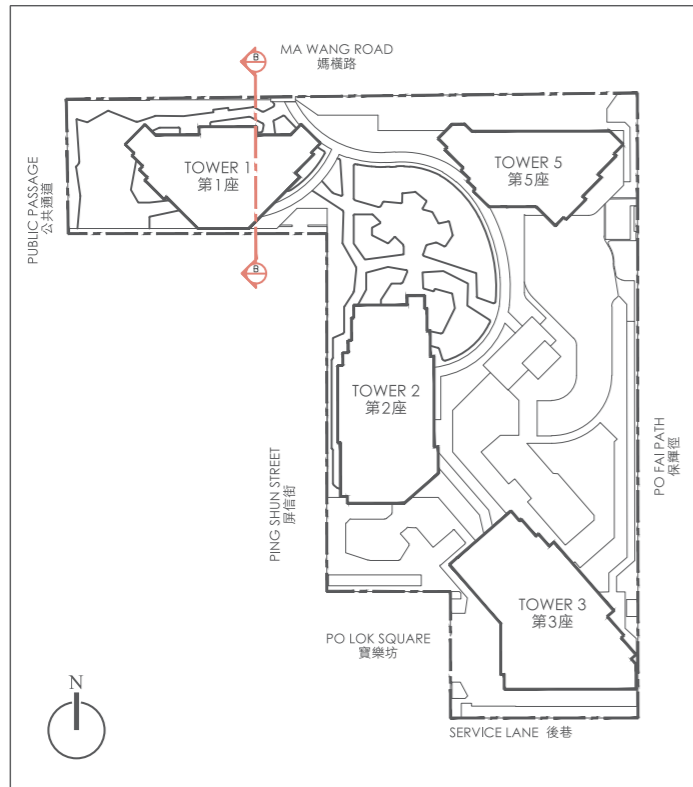
Legend 圖例

- Dotted line denotes level of the lowest residential floor
虛線為最低住宅樓層水平
- ▽ / △ Height in metre above the Hong Kong Principal Datum (PD) (Metre)
香港主水平基準以上高度(米)

Remark:
This cross-section plan is not drawn to scale.
備註:
此橫截面圖並非按照比例繪圖。

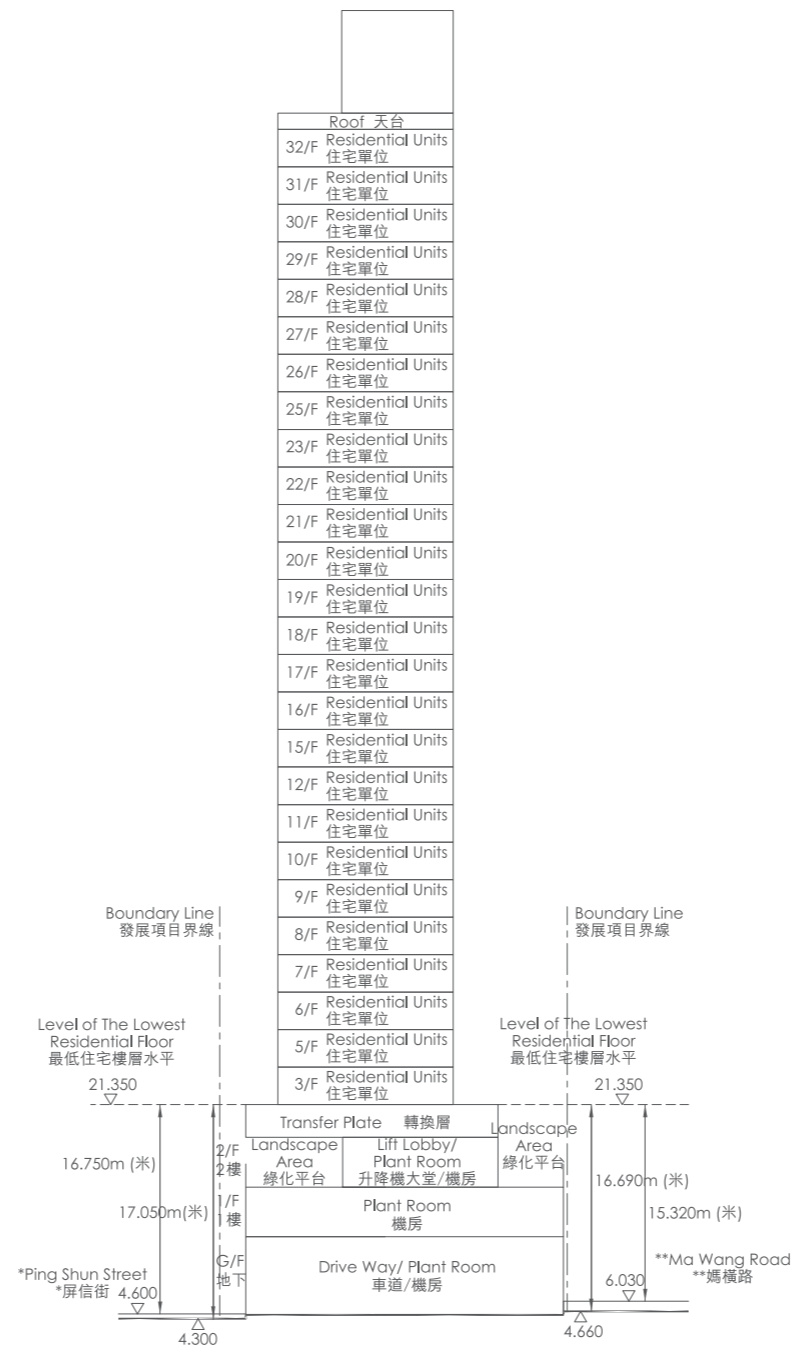
- * The part of Po Fai Path adjacent to the building (Tower 2) is 4.060 to 4.270 metres above the Hong Kong Principal Datum.
- * 毗連建築物(第2座)的一段保輝徑為香港主水平基準以上4.060至4.270米。
- ** The part of Ping Shun Street adjacent to the building (Tower 2) is 4.250 to 4.270 metres above the Hong Kong Principal Datum.
- ** 毗連建築物(第2座)的一段屏信街為香港主水平基準以上4.250至4.270米。
- *** The part of Drive Way adjacent to the building (Tower 2) is 0.300 to 3.900 metres above the Hong Kong Principal Datum.
- *** 毗連建築物(第2座)的一段車道為香港主水平基準以上0.300至3.900米。

19 CROSS-SECTION PLAN OF BUILDING IN THE PHASE 期數中的建築物的橫截面圖



Key Plan 索引圖

Tower 1 第1座



CROSS SECTION PLAN B 橫截面圖 B

Legend 圖例

- Dotted line denotes level of the lowest residential floor
虛線為最低住宅樓層水平
- ▽ / △ Height in metre above the Hong Kong Principal Datum (PD) (Metre)
香港主水平基準以上高度(米)

Remark:

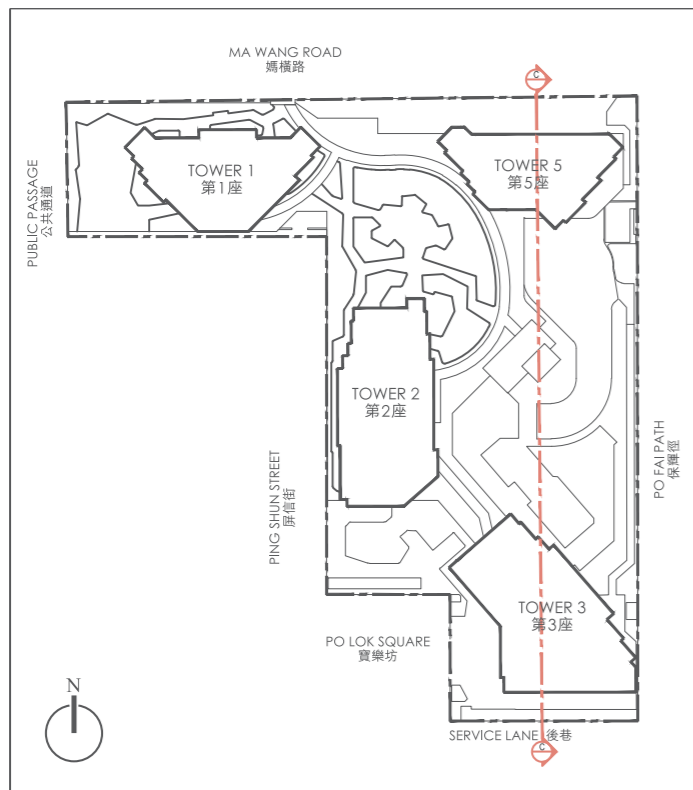
This cross-section plan is not drawn to scale.

備註:

此橫截面圖並非按照比例繪圖。

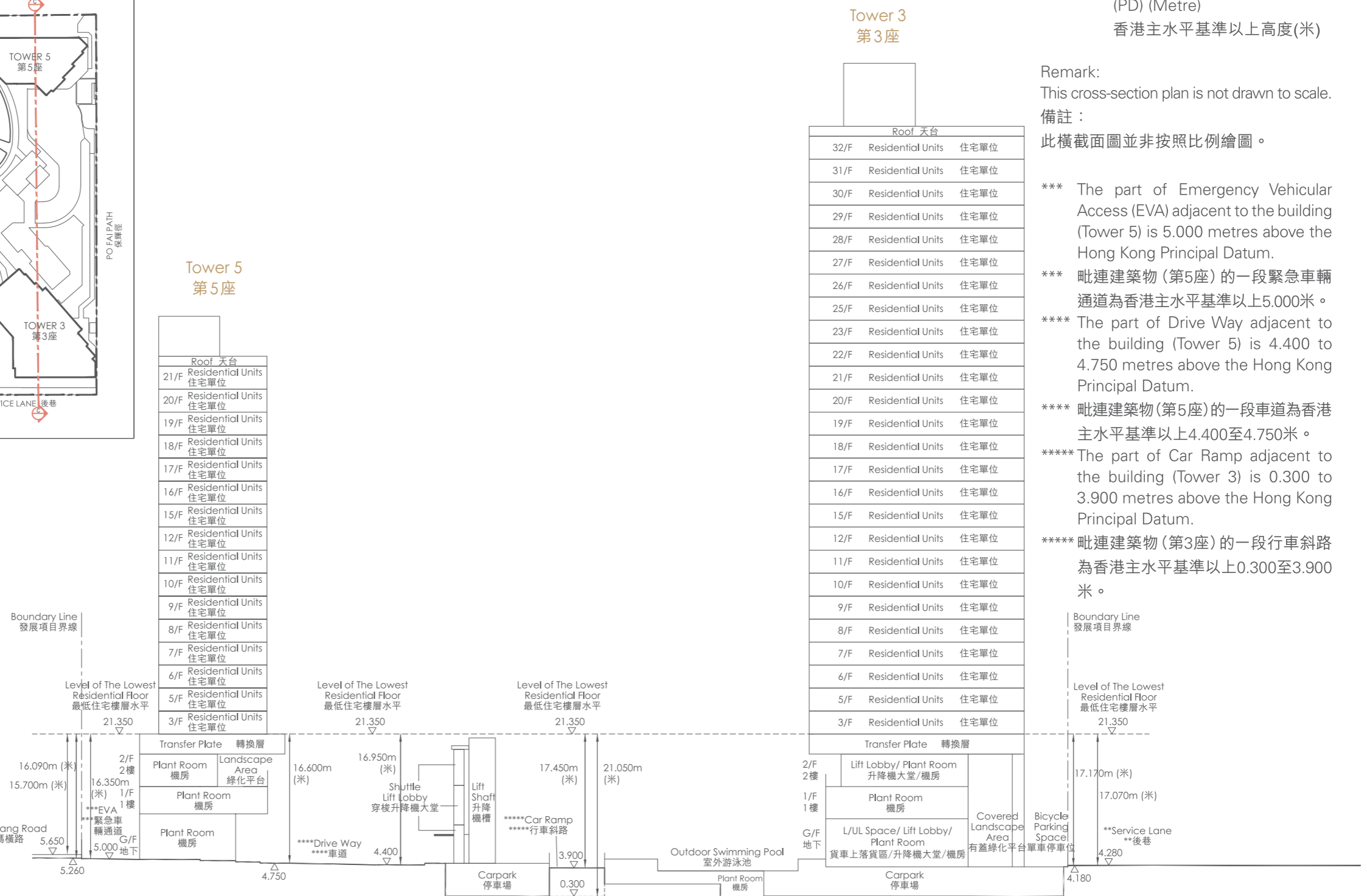
- * The part of Ping Shun Street adjacent to the building (Tower 1) is 4.300 to 4.600 metres above the Hong Kong Principal Datum.
- * 毗連建築物(第1座)的一段屏信街為香港主水平基準以上4.300至4.600米。
- ** The part of Ma Wang Road adjacent to the building (Tower 1) is 4.660 to 6.030 metres above the Hong Kong Principal Datum.
- ** 毗連建築物(第1座)的一段媽橫路為香港主水平基準以上4.660至6.030米。

19 CROSS-SECTION PLAN OF BUILDING IN THE PHASE 期數中的建築物的橫截面圖



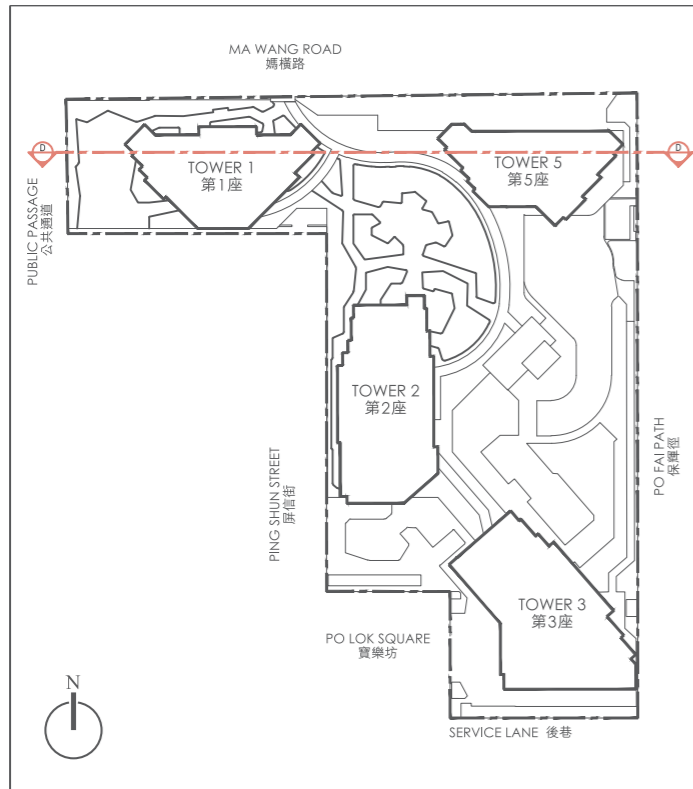
Key Plan 索引圖

- * The part of Ma Wang Road adjacent to the building (Tower 5) is 5.260 to 5.650 metres above the Hong Kong Principal Datum.
- * 毗連建築物(第5座)的一段媽橫路為香港主水平基準以上5.260至5.650米。
- ** The part of Service Lane adjacent to the building (Tower 3) is 4.180 to 4.280 metres above the Hong Kong Principal Datum.
- ** 毗連建築物(第3座)的一段後巷為香港主水平基準以上4.180至4.280米。

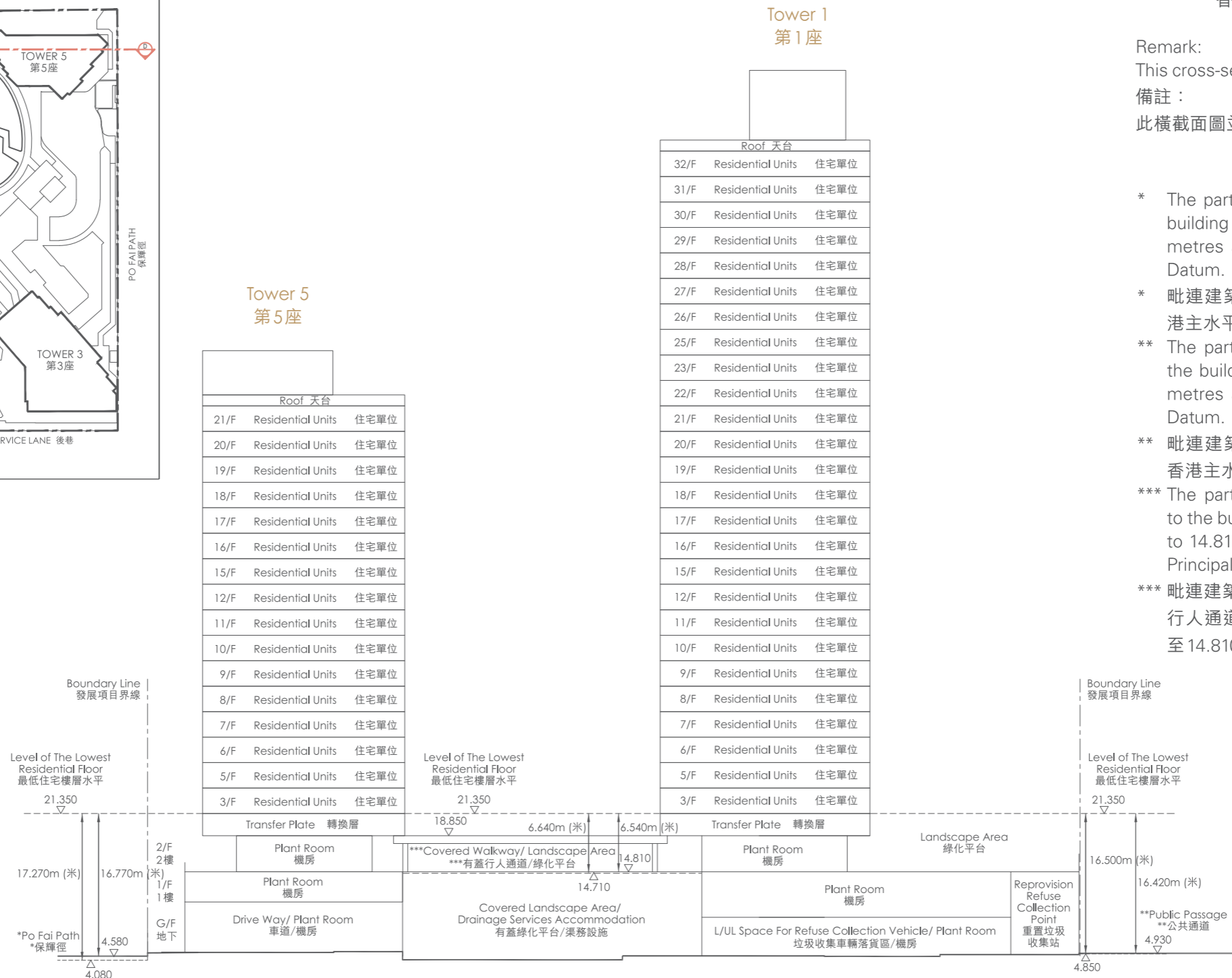


CROSS SECTION PLAN C 橫截面圖 C

19 CROSS-SECTION PLAN OF BUILDING IN THE PHASE 期數中的建築物的橫截面圖



Key Plan 索引圖



Legend 圖例

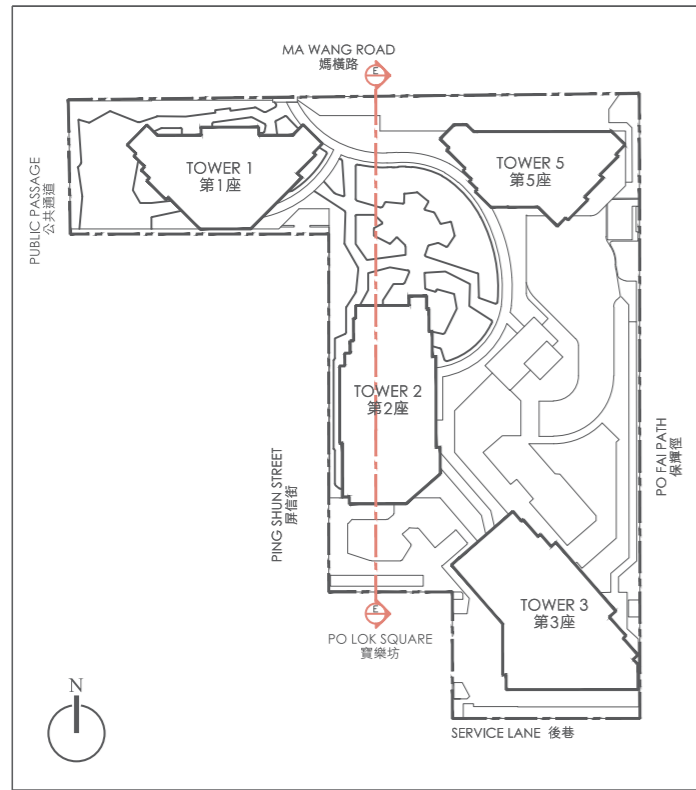
- Dotted line denotes level of the lowest residential floor
虛線為最低住宅樓層水平
- ▽ / △ Height in metre above the Hong Kong Principal Datum (PD) (Metre)
香港主水平基準以上高度(米)

Remark:
This cross-section plan is not drawn to scale.
備註：
此橫截面圖並非按照比例繪圖。

- * The part of Po Fai Path adjacent to the building (Tower 5) is 4.080 to 4.580 metres above the Hong Kong Principal Datum.
- * 毗連建築物 (第5座) 的一段保輝徑為香港主水平基準以上4.080至4.580米。
- ** The part of Public Passage adjacent to the building (Tower 1) is 4.850 to 4.930 metres above the Hong Kong Principal Datum.
- ** 毗連建築物 (第1座) 的一段公共通道為香港主水平基準以上4.850至4.930米。
- *** The part of Covered Walkway adjacent to the buildings (Tower 1 and 5) is 14.710 to 14.810 metres above the Hong Kong Principal Datum.
- *** 毗連建築物 (第1座和第5座) 的一段有蓋行人通道為香港主水平基準以上 14.710 至 14.810米。

CROSS SECTION PLAN D 橫截面圖 D

19 CROSS-SECTION PLAN OF BUILDING IN THE PHASE 期數中的建築物的橫截面圖



Key Plan 索引圖

**Tower 2
第2座**

Roof 天台
32/F Residential Units 住宅單位
31/F Residential Units 住宅單位
30/F Residential Units 住宅單位
29/F Residential Units 住宅單位
28/F Residential Units 住宅單位
27/F Residential Units 住宅單位
26/F Residential Units 住宅單位
25/F Residential Units 住宅單位
23/F Residential Units 住宅單位
22/F Residential Units 住宅單位
21/F Residential Units 住宅單位
20/F Residential Units 住宅單位
19/F Residential Units 住宅單位
18/F Residential Units 住宅單位
17/F Residential Units 住宅單位
16/F Residential Units 住宅單位
15/F Residential Units 住宅單位
12/F Residential Units 住宅單位
11/F Residential Units 住宅單位
10/F Residential Units 住宅單位
9/F Residential Units 住宅單位
8/F Residential Units 住宅單位
7/F Residential Units 住宅單位
6/F Residential Units 住宅單位
5/F Residential Units 住宅單位
3/F Residential Units 住宅單位



CROSS SECTION PLAN E 橫截面圖 E

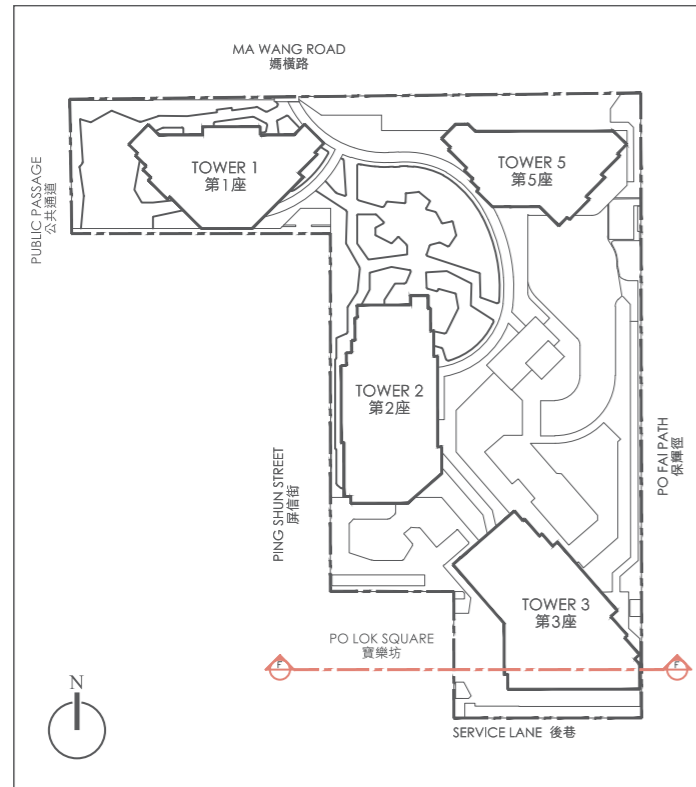
Legend 圖例

- Dotted line denotes level of the lowest residential floor
虛線為最低住宅樓層水平
- ▽ / △ Height in metre above the Hong Kong Principal Datum (PD) (Metre)
香港主水平基準以上高度(米)

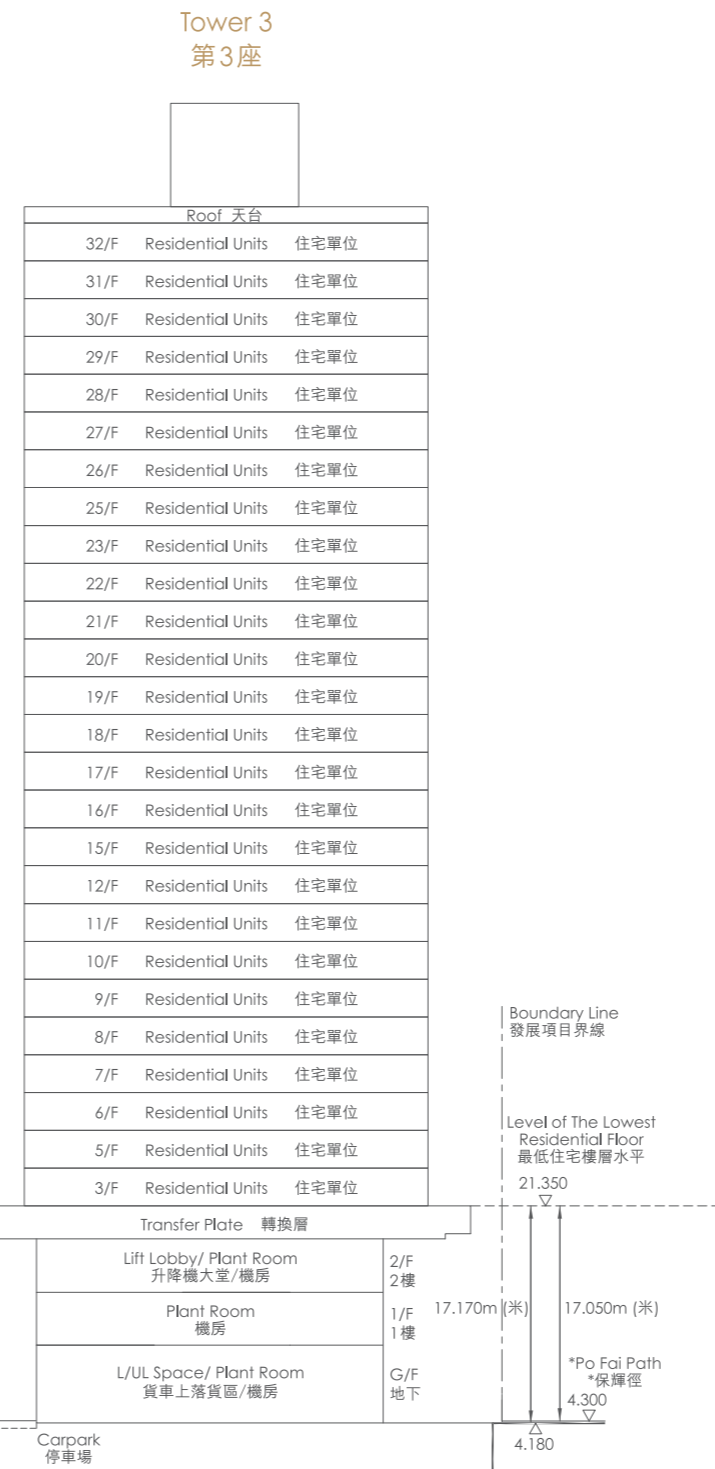
Remark:
This cross-section plan is not drawn to scale.
備註:
此橫截面圖並非按照比例繪圖。

- * The part of Ma Wang Road adjacent to the building (Tower 2) is 4.340 to 5.610 metres above the Hong Kong Principal Datum.
- * 毗連建築物(第2座)的一段媽橫路為香港主水平基準以上4.340至5.610米。
- ** The part of Po Lok Square adjacent to the building (Tower 2) is 4.040 to 4.230 metres above the Hong Kong Principal Datum.
- ** 毗連建築物(第2座)的一段寶樂坊為香港主水平基準以上4.040至4.230米。
- *** The part of Covered Walkway adjacent to the building (Tower 2) is 14.810 metres above the Hong Kong Principal Datum.
- *** 毗連建築物(第2座)的一段有蓋行人通道為香港主水平基準以上14.810米。

19 CROSS-SECTION PLAN OF BUILDING IN THE PHASE 期數中的建築物的橫截面圖



Key Plan 索引圖



CROSS SECTION PLAN F 橫截面圖F

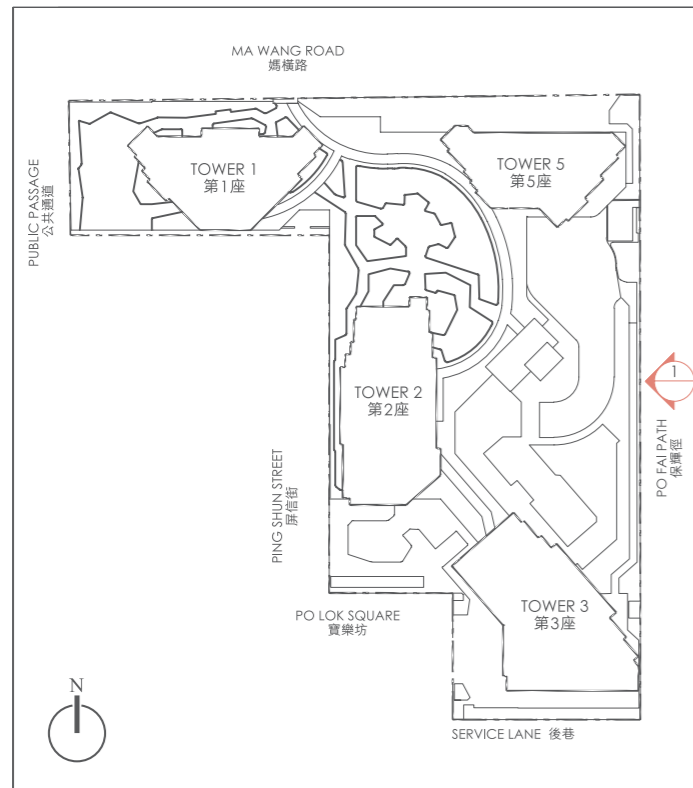
Legend 圖例

- Dotted line denotes level of the lowest residential floor
虛線為最低住宅樓層水平
- ▽ / △ Height in metre above the Hong Kong Principal Datum (PD) (Metre)
香港主水平基準以上高度(米)

Remark:
This cross-section plan is not drawn to scale.
備註：
此橫截面圖並非按照比例繪圖。

- * The part of Po Fai Path adjacent to the building (Tower 3) is 4.180 to 4.300 metres above the Hong Kong Principal Datum.
- * 毗連建築物(第3座)的一段保輝徑為香港主水平基準以上4.180至4.300米。
- ** The part of Po Lok Square adjacent to the building (Tower 3) is 4.040 to 4.190 metres above the Hong Kong Principal Datum.
- ** 毗連建築物(第3座)的一段寶樂坊為香港主水平基準以上4.040至4.190米。
- *** The part of Emergency Vehicular Access (EVA) adjacent to the buildings (Tower 3) is 3.650 to 4.250 metres above the Hong Kong Principal Datum.
- *** 毗連建築物(第3座)的一段緊急車輛通道為香港主水平基準以上3.650至4.250米。

20 ELEVATION PLAN 立面圖



Key Plan 索引圖

Authorized person for the Phase certified that the elevations shown on this plan:-

- (a) are prepared on the basis of the approved building plans for the Phase as of 29th August 2018; and
- (b) are in general accordance with the outward appearance of the Phase.

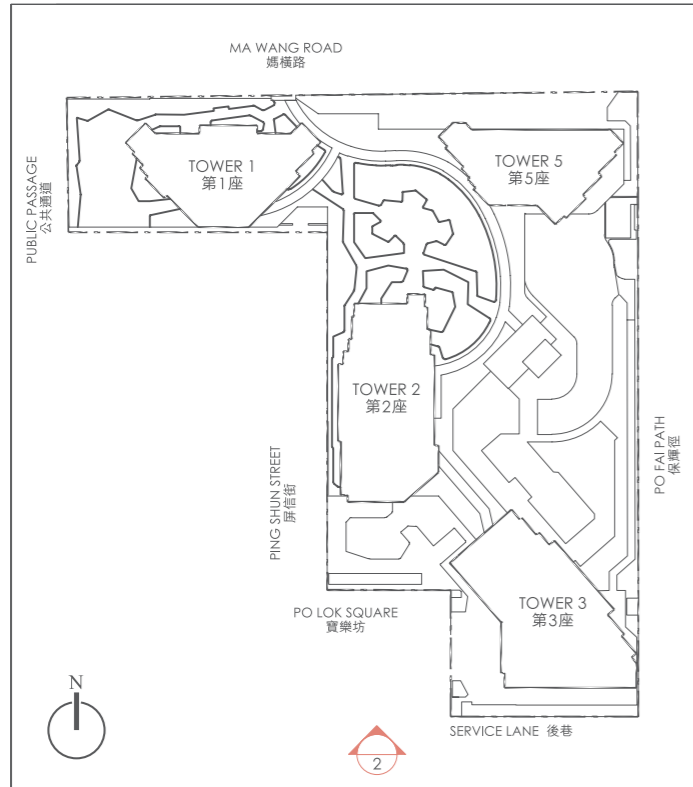
期數的認可人士證明本圖所顯示的立面圖：

- (a) 以2018年8月29日的情況為準的期數的經批准的建築圖則為基礎擬備；及
- (b) 大致上與期數的外觀一致。



ELEVATION 1 立面圖 1

20 ELEVATION PLAN 立面圖



Key Plan 索引圖

Authorized person for the Phase certified that the elevations shown on this plan:-

- (a) are prepared on the basis of the approved building plans for the Phase as of 29th August 2018; and
- (b) are in general accordance with the outward appearance of the Phase.

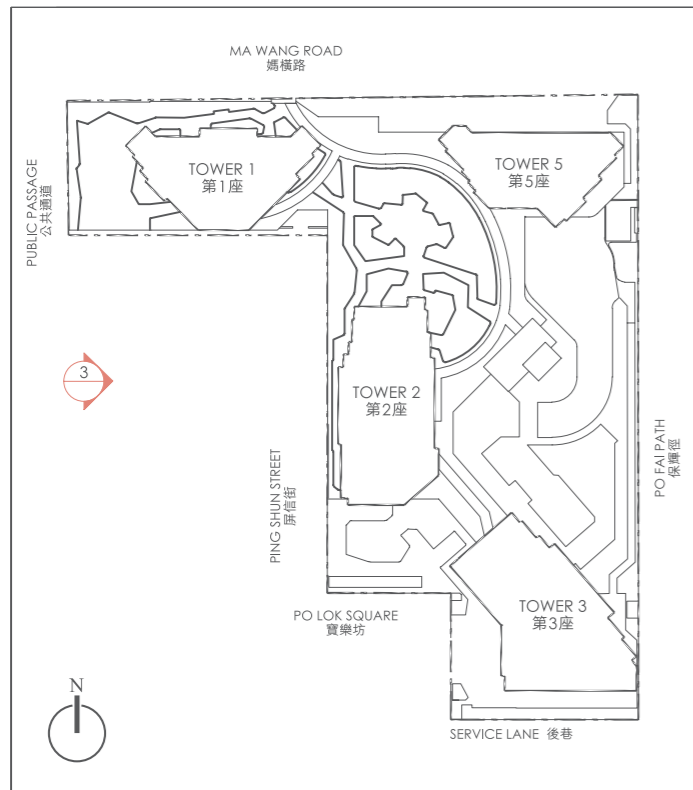
期數的認可人士證明本圖所顯示的立面圖：

- (a) 以2018年8月29日的情況為準的期數的經批准的建築圖則為基礎擬備；及
- (b) 大致上與期數的外觀一致。



ELEVATION 2 立面圖 2

20 ELEVATION PLAN 立面圖



Key Plan 索引圖

Authorized person for the Phase certified that the elevations shown on this plan:-

- (a) are prepared on the basis of the approved building plans for the Phase as of 29th August 2018; and
- (b) are in general accordance with the outward appearance of the Phase.

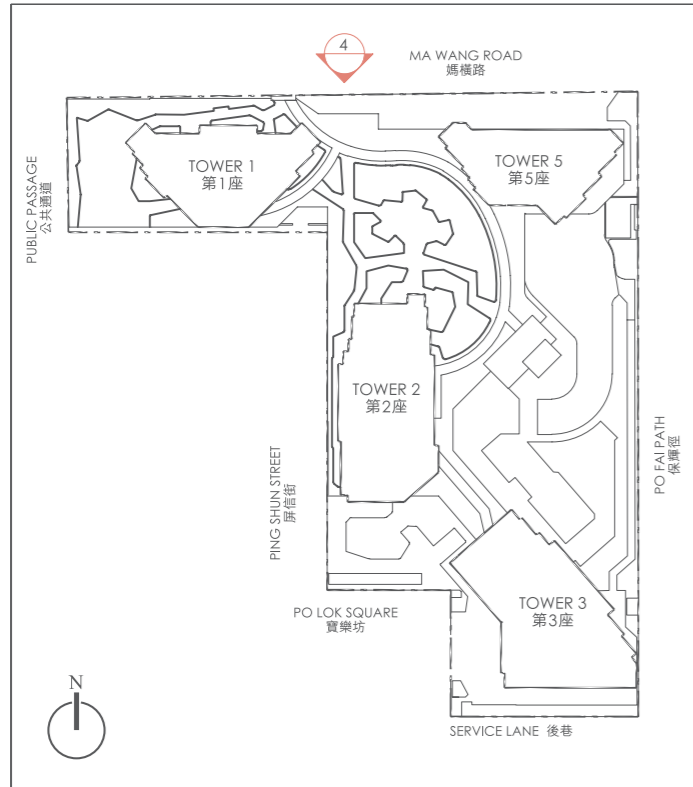
期數的認可人士證明本圖所顯示的立面圖：

- (a) 以2018年8月29日的情況為準的期數的經批准的建築圖則為基礎擬備；及
- (b) 大致上與期數的外觀一致。



ELEVATION 3 立面圖 3

20 ELEVATION PLAN 立面圖



Key Plan 索引圖

Authorized person for the Phase certified that the elevations shown on this plan:-

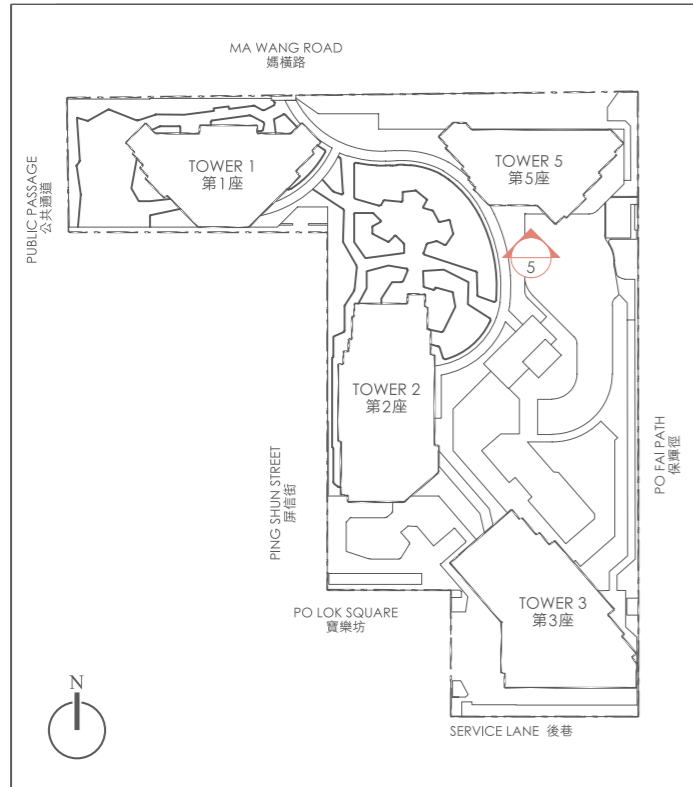
- (a) are prepared on the basis of the approved building plans for the Phase as of 29th August 2018; and
- (b) are in general accordance with the outward appearance of the Phase.

期數的認可人士證明本圖所顯示的立面圖：

- (a) 以2018年8月29日的情況為準的期數的經批准的建築圖則為基礎擬備；及
- (b) 大致上與期數的外觀一致。



20 ELEVATION PLAN 立面圖



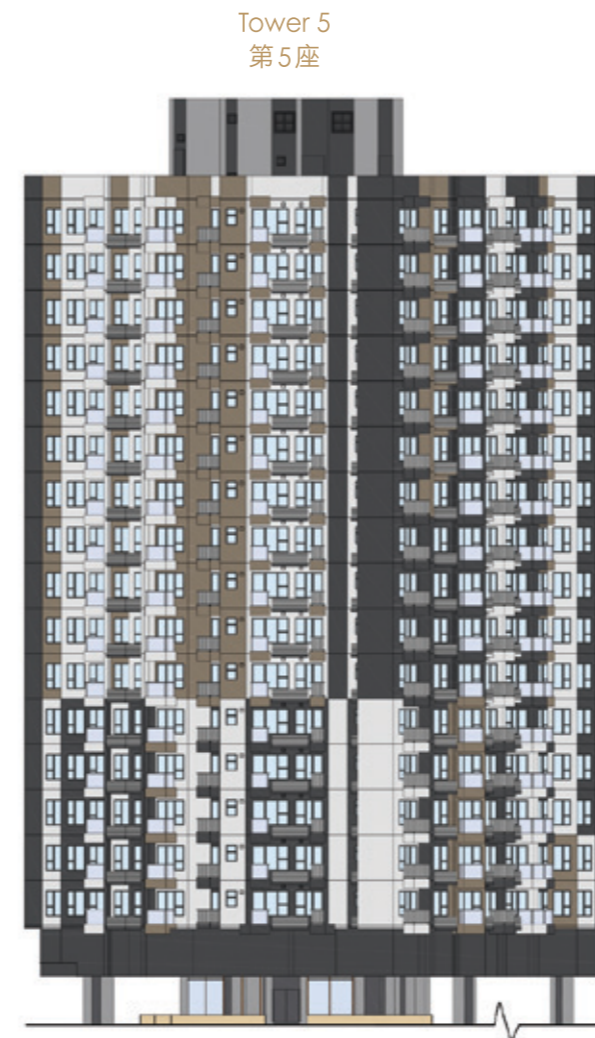
Key Plan 索引圖

Authorized person for the Phase certified that the elevations shown on this plan:-

- (a) are prepared on the basis of the approved building plans for the Phase as of 29th August 2018; and
- (b) are in general accordance with the outward appearance of the Phase.

期數的認可人士證明本圖所顯示的立面圖：

- (a) 以2018年8月29日的情況為準的期數的經批准的建築圖則為基礎擬備；及
- (b) 大致上與期數的外觀一致。



ELEVATION 5 立面圖 5

21 INFORMATION ON COMMON FACILITIES IN THE PHASE 期數中的公用設施的資料

Category of common facilities 公用設施的類別	Floor 樓層		Area 面積		Total Area 總面積	
			sq. m 平方米	sq. ft 平方呎	sq. m 平方米	sq. ft 平方呎
Residents' clubhouse (including any recreational facilities for residents' use) 住客會所 (包括供住客使用的任何康樂設施)	G/F 地下	Covered 有上蓋	567.754	6,111	1,257.186	13,532
		Uncovered 沒有上蓋	177.231	1,908		
	1/F 1樓	Covered 有上蓋	474.489	5,107		
		Uncovered 沒有上蓋	-	-		
	2/F 2樓	Covered 有上蓋	37.712	406		
		Uncovered 沒有上蓋	-	-		
Communal garden or play area for residents' use on the roof, or on any floor between the roof and the lowest residential floor, of a building in the Phase (whether known as a communal sky garden or otherwise) 位於期數中的建築物的天台或在天台和最低一層住宅樓層之間的任何一層的、供住客使用的公用花園或遊樂地方 (不論是稱為公用空中花園或有其他名稱)	N/A 不適用	N/A 不適用	-	-	-	-
	N/A 不適用	N/A 不適用	-	-	-	-
Communal garden or play area for residents' use below the lowest residential floor of a building in the Phase (whether known as a covered and landscaped play area or otherwise) 位於期數中的建築物的最低一層住宅樓層以下的、供住客使用的公用花園或遊樂地方(不論是稱為有蓋及園景的遊樂場或有其他名稱)	G/F 地下	Covered 有上蓋	529.326	5,698	6,393.013	68,814
		Uncovered 沒有上蓋	2,177.259	23,436		
	2/F 2樓	Covered 有上蓋	1,454.221	15,653		
		Uncovered 沒有上蓋	2,232.207	24,027		

Remarks:

- Areas in square metres as specified above are based on the latest approved building plans.
- Areas in square feet are converted from areas in square metres at a rate of 1 square metre to 10.764 square feet and rounded off to the nearest integer.

備註：

- 上述所列以平方米顯示之面積乃依據最新的經批准的建築圖則。
- 以平方呎顯示之面積由以平方米顯示之面積以1平方米=10.764平方呎換算，並四捨五入至整數。

22 INSPECTION OF PLANS AND DEED OF MUTUAL COVENANT 閱覽圖則及公契

- A copy of the Outline Zoning Plan relating to the Development is available at: www.ozp.tpb.gov.hk
- (a) A copy of the latest draft of every deed of mutual covenant in respect of the specified residential property as at the date on which the specified residential property is offered to be sold is available for inspection at the place at which the specified residential property is offered to be sold.
(b) The inspection is free of charge.

- 備有關於發展項目的分區計劃大綱圖的文本供閱覽的互聯網網站的網址為www.ozp.tpb.gov.hk。
- (a) 關於指明住宅物業的每一公契在將指明住宅物業提供出售的日期的最新擬稿的文本存放在指明住宅物業的售樓處，以供閱覽。
(b) 無須為閱覽付費。

23 FITTINGS, FINISHES AND APPLIANCES

裝置、裝修物料及設備

1. EXTERIOR FINISHES	
Item	Description
(a) External wall	Finished with ceramic tiles, aluminium cladding, ceramics tiles on reinforced concrete acoustic fins, glass balustrade, metal balustrade, metal grille, metal louvre, paint and natural stone.
(b) Window	Aluminium window frames fitted with tinted Insulated Glass Units (IGU) for all windows in Living Room, Dining Room, Master Bedroom and Bedroom. Aluminium window frames fitted with tinted glass for all windows in Kitchen. Aluminium window frames fitted with tinted acid etched glass for all windows in Master Bathroom and Bathroom (if any).
(c) Bay window	Not applicable.
(d) Planter	Not applicable.
(e) Verandah or balcony	Balconies are covered and provided with metal framed balustrade with laminated glass infill and metal top rail, except for the following balconies which are covered and provided with metal framed balustrade with laminated glass infill, metal grille and metal top rail. Unit C, D & E at 3/F, 5/F - 12/F, 15/F - 23/F & 25/F - 32/F at Tower 1 Unit A, D, E, G & J at 3/F, 5/F - 12/F, 15/F - 23/F & 25/F - 32/F at Tower 2 Unit D, E & F at 3/F, 5/F - 12/F, 15/F - 23/F & 25/F - 32/F at Tower 3 Unit C & E at 3/F, 5/F - 12/F, 15/F - 21/F at Tower 5 Floor is finished with ceramic tiles. Wall is finished with ceramic tiles. Ceiling is finished with paint. No verandah is provided.
(f) Drying facilities for clothing	Not applicable.
2. INTERIOR FINISHES	
Item	Description
(a) Lobby	Main Entrance Lobbies of Towers on 2/F - Wall finished with glass, mirror, metal, tiles, natural stone and plastic laminate. Floor finished with natural stone. Gypsum board false ceiling finished with emulsion paint is provided. Lift Lobbies of Residential Floors - Wall finished with plastic laminate, mirror, glass, metal trim & metal panel. Floor finished with ceramic tiles. Gypsum board false ceiling finished with emulsion paint is provided.

1. 外部裝修物料	
細項	描述
(a) 外牆	鋪砌瓷磚、鋁飾板、鋪砌瓷磚的強化混凝土隔聲鰭、玻璃欄杆、金屬欄杆、金屬梳子、金屬百葉、油漆及天然石材。
(b) 窗	客廳、飯廳、主人睡房及睡房之窗戶選用鋁窗框及有色雙層中空玻璃。 廚房窗選用鋁窗框鑲有色玻璃。 主人浴室及浴室窗(如有)選用鋁窗框鑲酸蝕有色磨砂玻璃。
(c) 窗台	不適用。
(d) 花槽	不適用。
(e) 陽台或露台	露台有蓋並裝設金屬框鑲夾層清玻璃的欄杆及金屬頂欄。 除以下單位之露台有蓋並裝設金屬框鑲夾層清玻璃的欄杆，金屬梳子及金屬頂欄。 第1座3樓、5樓至12樓、15樓至23樓、25樓至32樓C、D及E單位 第2座3樓、5樓至12樓、15樓至23樓、25樓至32樓A、D、E、G及J單位 第3座3樓、5樓至12樓、15樓至23樓、25樓至32樓D、E及F單位 第5座3樓、5樓至12樓、15樓至21樓C及E單位 地台鋪以瓷磚。 牆身鋪以瓷磚。 天花髹油漆。 沒有陽台。
(f) 乾衣設施	不適用。
2. 室內裝修物料	
細項	描述
(a) 大堂	2樓大廈入口大堂 - 牆身鋪砌玻璃飾面、鏡面飾板、金屬飾板、面磚、天然石材及膠板。 地台鋪砌天然石材。 裝設石膏板假天花髹乳膠漆。 住宅層升降機大堂 - 牆身鋪膠板飾面、鏡面飾板、玻璃飾面、金屬飾條及金屬飾板。 地台鋪砌瓷磚。 裝設石膏板假天花髹乳膠漆飾板。

23 FITTINGS, FINISHES AND APPLIANCES

裝置、裝修物料及設備

2. INTERIOR FINISHES	
Item	Description
(a) Lobby	<p>Shuttle Lift Lobbies of Tower to Podium (under Tower 3) For G/F and 2/F - Wall finished with glass, mirror, metal, wooden veneer strip and plastic laminate. Floor finished with natural stone. Gypsum board false ceiling finished with emulsion paint is provided.</p> <p>For Basement Floor - Wall finished with mirror, metal and plastic laminate. Floor finished with natural stone. Gypsum board false ceiling finished with emulsion paint is provided.</p> <p>Shuttle Lift Lobbies to Clubhouse For G/F - 2/F - Wall finished with tiles, plastic laminate, wooden veneer strip, natural stone and metal. Floor finished with natural stone. Gypsum board false ceiling finished with emulsion paint and plastic laminate is provided.</p> <p>For Basement Floor - Wall finished with mirror, plastic laminate, wooden veneer strip and metal. Floor finished with natural stone. Gypsum board false ceiling finished with emulsion paint and plastic laminate is provided.</p> <p>Fireman's Lift Lobbies of Towers 1, 2, 3 & 5 For G/F - Wall finished with distemper paint. Floor finished with screeding. Ceiling finished with distemper paint.</p> <p>For 1/F and 2/F - Wall finished with plaster with distemper paint. Floor finished with screeding. Ceiling finished with distemper paint.</p> <p>For Typical Residential Floors - Wall finished with emulsion paint. Floor finished with tiles. Ceiling finished with emulsion paint where exposed.</p>

2. 室內裝修物料	
細項	描述
(a) 大堂	<p>往平台之穿梭升降機大堂 (於第3座) 地下及2樓 - 牆身鋪砌玻璃飾面、鏡面飾板、金屬飾板、木飾面條子及膠板。 地台鋪砌天然石材。 裝設石膏板假天花髹乳膠漆。</p> <p>地庫 - 牆身鋪砌鏡面飾板、金屬飾板及膠板。 地台鋪砌天然石材。 裝設石膏板假天花髹乳膠漆。</p> <p>往會所之穿梭升降機大堂 地下至2樓 - 牆身鋪砌瓷磚、膠板、木飾面條子、天然石材及金屬飾板。 地台鋪砌天然石材。 裝設石膏板假天花髹乳膠漆及膠板。</p> <p>地庫 - 牆身鋪砌鏡面飾板、膠板、木飾面條子及金屬飾板。 地台鋪砌天然石材。 裝設石膏板假天花髹乳膠漆及膠板。</p> <p>第1、2、3及5座之消防員升降機大堂 地下 - 牆身鋪批盪灰水。 地台鋪批盪。 天花髹灰水。</p> <p>1樓及2樓 - 牆身鋪批盪灰水。 地台鋪批盪。 天花髹灰水。</p> <p>住宅層消防員升降機大堂 - 外露牆身髹乳膠漆。 地台鋪砌瓷磚。 天花外露部份髹乳膠漆。</p>

23 FITTINGS, FINISHES AND APPLIANCES

裝置、裝修物料及設備

2. INTERIOR FINISHES	
Item	Description
(a) Lobby	<p>For Basement Floor (For Towers 2 and 3 only) - Wall finished with mirror, metal and plastic laminate. Floor finished with natural stone. Gypsum board false ceiling finished with emulsion paint is provided.</p>
(b) Internal wall and ceiling	<p>Internal wall - Living Room, Dining Room, Master Bedroom and Bedroom finished with plaster with emulsion paint except area covered by bulkhead.</p> <p>Ceiling - Living Room, Dining Room, Master Bedroom and Bedroom finished with plaster with emulsion paint where exposed. Gypsum board bulkhead finished with emulsion paint for Living Room, Dining Room, Master Bedroom and Bedroom.</p>
(c) Internal floor	Living Room, Dining Room, Master Bedroom and Bedroom finished with engineered timber flooring and solid timber skirting. Reconstituted stone border along inner side of door opening to Balcony and Utility Platform.
(d) Bathroom	<p>Master Bathroom / Bathroom - Wall finished with Porcelain tiles to exposed surface and up to false ceiling. Floor finished with Porcelain tiles to exposed surface. Gypsum board with emulsion paint and metal panel false ceilings are provided.</p>
(e) Kitchen	<p>Kitchen - Wall finished with Porcelain tiles to exposed surface and up to false ceiling. Metal panel false ceiling are provided. Floor finished with Porcelain tiles.</p> <p>Open Kitchen - Wall finished with Porcelain tiles to exposed surface and up to false ceiling. Gypsum board with emulsion paint false ceiling are provided. Floor finished with Porcelain tiles and engineered timber flooring.</p> <p>Kitchen / Open Kitchen - Cooking bench countertop is fitted with solid surface material.</p>

2. 室內裝修物料	
細項	描述
(a) 大堂	<p>地庫 (僅於第2及3座) - 牆身鋪砌鏡面飾板、金屬飾板及膠板。 地台鋪砌天然石材。 裝設石膏板假天花髹乳膠漆。</p>
(b) 內牆及天花板	<p>內牆 - 客廳、飯廳、主人睡房及睡房鋪批盪髹乳膠漆但不包括被假陣遮蓋之牆身。</p> <p>天花板 - 客廳、飯廳、主人睡房及睡房外露部分鋪批盪髹乳膠漆。 客廳、飯廳、主人睡房及睡房均裝設石膏板假陣髹乳膠漆。</p>
(c) 內部地板	客廳、飯廳、主人睡房及睡房內部地板鋪砌複合木地板及實心木牆腳線。通道往露台及工作平台門戶之室內地台圍邊部分鋪砌人造石材。
(d) 浴室	<p>主人浴室 / 浴室 - 外露牆身鋪砌高溫瓷磚至假天花。 外露地台鋪砌高溫瓷磚。 裝設石膏板髹乳膠漆及金屬板假天花。</p>
(e) 廚房	<p>廚房 - 外露牆身鋪砌高溫瓷磚至假天花。 裝設金屬板假天花。 地台鋪砌高溫瓷磚。</p> <p>開放式廚房 - 外露牆身鋪砌高溫瓷磚至假天花。 裝設石膏板假天花髹乳膠漆。 地台鋪砌高溫瓷磚及複合木地板。</p> <p>廚房 / 開放式廚房 - 灶台面為實心面板材料。</p>

23 FITTINGS, FINISHES AND APPLIANCES

裝置、裝修物料及設備

3. INTERIOR FITTINGS	
Item	Description
(a) Doors	<p>Main Entrance of Residential Properties - Solid core fire rated timber door finished with plastic laminate and fitted with lockset, concealed door closer, door hinges, smoke seal, door stop and eye viewer.</p> <p>Kitchen - Solid core fire rated timber door finished with plastic laminate and fitted with fire rated glass vision panel, lever handle, concealed door closer, door hinges, smoke seal and door stop.</p> <p>Master Bedroom / Bedroom - Hollow core timber door finished with plastic laminate and fitted with lockset, door hinges and door stop.</p> <p>Master Bathroom / Bathroom - Hollow core timber door finished with plastic laminate and fitted with lockset, door hinges and door stop, except for the following units Bathroom which are hollow core timber door finished with plastic laminate and fitted with lockset, door hinges, door stop and timber louvre: Unit B, C, D & E at 3/F, 5/F - 12/F, 15/F - 23/F & 25/F - 32/F at Tower 1 Unit A, D, E, F, G & J at 3/F, 5/F - 12/F, 15/F - 23/F & 25/F - 32/F at Tower 2 Unit A, D, E, F, H & J at 3/F, 5/F - 12/F, 15/F - 23/F & 25/F - 32/F at Tower 3 Unit B, C & E at 3/F, 5/F - 12/F & 15/F - 21/F at Tower 5 Additional solid core timber sliding door finished with plastic laminate fitted with mirror and metal trim, lockset and track set for the following units: Unit C & E at 3/F, 5/F - 12/F, 15/F - 23/F & 25/F - 32/F at Tower 1 Unit G at 3/F, 5/F - 12/F, 15/F - 23/F & 25/F - 32/F at Tower 2 Unit D & E at 3/F, 5/F - 12/F, 15/F - 23/F & 25/F - 32/F at Tower 3 Unit C & E at 3/F, 5/F-12/F & 15/F-21/F at Tower 5</p> <p>Store - Hollow core timber sliding door finished with plastic laminate fitted with lockset, track set and timber louvre.</p> <p>Balcony - Aluminium framed sliding door with insulated glass fitted with lockset, except for the following units which aluminium framed swing door with insulated glass fitted with lockset: Unit C & E at 3/F, 5/F - 12/F, 15/F - 23/F & 25/F - 32/F at Tower 1 Unit G at 3/F, 5/F - 12/F, 15/F - 23/F & 25/F - 32/F at Tower 2 Unit D, E & F at 3/F, 5/F - 12/F, 15/F - 23/F & 25/F - 32/F at Tower 3 Unit C & E at 3/F, 5/F - 12/F, 15/F - 21/F at Tower 5</p>

3. 室內裝置	
細項	描述
(a) 門	<p>住宅單位大門 - 膠板飾面實心防火木門，裝設門鎖、隱藏氣鼓、門鉸、防煙條、門擋及防盜眼。</p> <p>廚房 - 膠板飾面實心防火木門，裝設防火玻璃視窗、手柄、隱藏氣鼓、門鉸、防煙條及門擋。</p> <p>主人睡房 / 睡房 - 膠板飾面空心木門，裝設門鎖、門鉸及門擋。</p> <p>主人浴室 / 浴室 - 膠板飾面空心木門，裝設門鎖、門鉸及門擋。除以下單位之浴室選用膠板飾面空心木門，裝設門鎖、門鉸、門擋及木百葉： 第1座3樓、5樓至12樓、15樓至23樓、25樓至32樓B、C、D及E單位 第2座3樓、5樓至12樓、15樓至23樓、25樓至32樓A、D、E、F、G及J單位 第3座3樓、5樓至12樓、15樓至23樓、25樓至32樓A、D、E、F、H及J單位 第5座3樓、5樓至12樓、15樓至21樓B、C及E單位 以下單位之浴室額外配以膠板、鏡面及金屬飾面之實心木趟門，並裝設門鎖及路軌： 第1座3樓、5樓至12樓、15樓至23樓、25樓至32樓C及E單位 第2座3樓、5樓至12樓、15樓至23樓、25樓至32樓G單位 第3座3樓、5樓至12樓、15樓至23樓、25樓至32樓D及E單位 第5座3樓、5樓至12樓、15樓至21樓C及E單位</p> <p>儲物房 - 膠板飾面空心木趟門，裝設門鎖、門軌及木百葉。</p> <p>露台 - 鋁框趟門配雙層中空玻璃，裝設門鎖。除以下單位之露台裝設鋁框掩門配雙層中空玻璃，裝設門鎖。 第1座3樓，5樓至12樓，15樓至23樓，25樓至32樓C及E單位 第2座3樓，5樓至12樓，15樓至23樓，25樓至32樓G單位 第3座3樓，5樓至12樓，15樓至23樓，25樓至32樓D、E及F單位 第5座3樓，5樓至12樓，15樓至21樓C及E單位</p>

23 FITTINGS, FINISHES AND APPLIANCES

裝置、裝修物料及設備

3. INTERIOR FITTINGS	
Item	Description
(a) Doors	Utility Platform - Aluminium framed swing door with insulated glass fitted with lockset and door hinges.
(b) Bathroom	Master Bathroom / Bathroom - Timber mirror cabinet and wooden vanity counter with natural stone countertop. Fittings and equipment include vitreous china wash basin with chrome plated basin mixer, vitreous china water closet, press steel bathtub (1500mm(L) x 700mm(W) x 390mm(D)), with chrome plated bath mixer, aluminium curtain track and chrome plated toilet paper holder. Window exhaust fan is provided for bathroom except for the following units, that air extraction system is provided: Unit B, C, D & E at 3/F, 5/F - 12/F, 15/F - 23/F & 25/F - 32/F at Tower 1 Unit A, D, E, G & J at 3/F, 5/F - 12/F, 15/F - 23/F & 25/F - 32/F at Tower 2 Unit A, D, E, F & H at 3/F, 5/F - 12/F, 15/F - 23/F & 25/F - 32/F at Tower 3 Unit B, C & E at 3/F, 5/F - 12/F & 15/F - 21/F at Tower 5 Copper pipes are used for cold and hot water supply system. uPVC pipes are used for flushing water supply system. For appliances provision, please refer to the "Appliances Schedule".
(c) Kitchen	Kitchen / Open Kitchen - Stainless steel sink with chrome plated sink mixer. Copper pipes are used for cold and hot water supply system. Fitted with wooden kitchen cabinet with plastic laminate, high gloss acrylic finished door panel and solid surface material countertop. Smoke detector and sprinkler head installed in the following units: Unit C & E at 3/F, 5/F - 12/F, 15/F - 23/F & 25/F - 32/F at Tower 1 Unit G at 3/F, 5/F - 12/F, 15/F - 23/F & 25/F - 32/F at Tower 2 Unit D & E at 3/F, 5/F - 12/F, 15/F - 23/F & 25/F - 32/F at Tower 3 Unit C & E at 3/F, 5/F - 12/F & 15/F - 21/F at Tower 5 For appliances provision, please refer to the "Appliances Schedule".
(d) Bedroom	No fittings.
(e) Telephone	Telephone outlets are provided. For location and number of outlets, please refer to the "Schedule of Mechanical & Electrical Provisions of Residential Properties".
(f) Aerials	TV/FM outlets for local TV/FM programs are provided. For location and number of outlets, please refer to the "Schedule of Mechanical & Electrical Provisions of Residential Properties".

3. 室內裝置	
細項	描述
(a) 門	工作平台 - 鋁框掩門配雙層中空玻璃，裝設門鎖及門鉸。
(b) 浴室	主人浴室 / 浴室 - 裝設木鏡櫃、天然石檯面木儲物櫃。 裝置及設備包括陶瓷洗手盆配鍍鉻洗手盆水龍頭、陶瓷坐廁、壓鋼浴缸(1500毫米(長) x 700毫米(闊) x 390毫米(深))，裝設鍍鉻浴缸水龍頭套裝、鋁質浴簾軌及鍍鉻廁紙架。 浴室提供窗口式抽氣扇、除以下單位之浴室設有抽氣系統： 第1座3樓、5樓至12樓、15樓至23樓、25樓至32樓B、C、D及E單位 第2座3樓、5樓至12樓、15樓至23樓、25樓至32樓A、D、E、G及J單位 第3座3樓、5樓至12樓、15樓至23樓、25樓至32樓A、D、E、F及H單位 第5座3樓、5樓至12樓、15樓至21樓B、C及E單位 冷熱水供水系統採用銅喉管。 沖廁供水系統採用膠喉。 有關供應之設備，請參閱「設備說明表」。
(c) 廚房	廚房 / 開放式廚房 - 不銹鋼洗滌盆配鍍鉻洗滌盆水龍頭。冷熱水供水系統採用銅喉管。木製廚櫃組合配膠板飾面和高光亞克力門板及實心面板材料枱面。 以下單位均設煙霧偵測器及消防花灑頭： 第1座3樓、5樓至12樓、15樓至23樓、25樓至32樓C及E單位 第2座3樓、5樓至12樓、15樓至23樓、25樓至32樓G單位 第3座3樓、5樓至12樓、15樓至23樓、25樓至32樓D及E單位 第5座3樓、5樓至12樓、15樓至21樓C及E單位 有關供應之設備，請參閱「設備說明表」。
(d) 睡房	沒有裝置。
(e) 電話	裝設有電話插座。有關接駁點的位置及數目，請參閱「住宅物業機電裝置數量說明表」。
(f) 天線	裝設有本地電視節目及電台節目的電視及電台接收插座。有關接駁點的位置及數目，請參閱「住宅物業機電裝置數量說明表」。

23 FITTINGS, FINISHES AND APPLIANCES

裝置、裝修物料及設備

3. INTERIOR FITTINGS	
Item	Description
(g) Electrical installations	<p>Single phase electricity supply with miniature circuit breakers distribution board are provided for residential units except residential units with Open Kitchen.</p> <p>Three phase electricity supply with miniature circuit breakers distribution board are provided for residential units with Open Kitchen.</p> <p>Conduit wiring concealed in walls or enclosed in false ceiling or bulkhead for lightings and power points are provided.</p> <p>For location and number of power points and air conditioner points, please refer to the "Schedule of Mechanical and Electrical Provisions of Residential Properties".</p>
(h) Gas supply	<p>Individual gas meter is provided at all residential units Kitchen except residential units with Open Kitchen.</p> <p>Gas supply pipes are installed and connected to gas cooker and gas water heater (For residential units with Open Kitchen, gas water heater and gas cooker are not provided).</p> <p>For location of connection points, please refer to the "Schedule of Mechanical and Electrical Provision of Residential Properties".</p>
(i) Washing machine connection point	<p>Water point and drain point are provided for washer dryer machine.</p> <p>For location of connection points, please refer to the "Schedule of Mechanical & Electrical Provisions of Residential Properties"</p>
(j) Water supply	<p>Water pipes are partly concealed and partly exposed. Exposed water pipes are enclosed by false ceiling and bulkhead or running on external walls.</p> <p>Copper pipes are used for both cold and hot water supply system.</p> <p>uPVC pipes are used for flushing water supply system.</p> <p>Hot water supply is available in Bathroom and Kitchen / Open Kitchen.</p>

3. 室內裝置	
細項	描述
(g) 電力裝置	<p>住宅單位提供單相電力配電箱並裝有微型斷路器，採用開放式廚房的住宅單位除外。</p> <p>採用開放式廚房的住宅單位提供三相電力配電箱並裝有微型斷路器。</p> <p>照明及電插座之導管暗藏於牆身或置於假天花或假陣內。</p> <p>有關電插座及空調機接駁點的位置及數目，請參閱「住宅物業機電裝置數量說明表」。</p>
(h) 氣體供應	<p>每住宅單位煤氣錶接駁點設於廚房，採用開放式廚房的住宅單位除外。</p> <p>煤氣喉接駁至煤氣煮食爐及煤氣熱水爐(採用開放式廚房的住宅單位並沒有提供煤氣熱水爐及煤氣煮食爐)。</p> <p>有關接駁點的位置，請參閱「住宅物業機電裝置數量說明表」。</p>
(i) 洗衣機接駁點	<p>洗衣乾衣機設有來水及去水接駁點。</p> <p>有關接駁點的位置，請參閱「住宅物業機電裝置數量說明表」。</p>
(j) 供水	<p>水管部份隱藏及部分外露。外露水管被假天花及假陣掩蓋或置於外牆身。</p> <p>冷熱水供水系統採用銅喉管。</p> <p>沖廁供水系統採用膠喉管。</p> <p>於浴室及廚房/開放式廚房，有熱水供應。</p>

23 FITTINGS, FINISHES AND APPLIANCES

裝置、裝修物料及設備

4. MISCELLANEOUS			
Item	Description		
(a) Lifts	11 nos. of "Schindler" (Model No.: Schindler 7000) passenger lifts are provided for Towers 1, 2, 3 & 5.		
	Tower	Lift No.	Floors Served
	1	L1 and L2	2/F, 3/F, 5/F - 12/F, 15/F - 23/F & 25/F - 32/F
		L3	G/F, 1/F - 3/F, 5/F - 12/F, 15/F - 23/F & 25/F - 32/F
	2	L4 and L5	2/F, 3/F, 5/F - 12/F, 15/F - 23/F & 25/F - 32/F
		L6	B/F, G/F, 1/F - 3/F, 5/F - 12/F, 15/F - 23/F & 25/F - 32/F
	3	L7 and L8	2/F, 3/F, 5/F - 12/F, 15/F - 23/F & 25/F - 32/F
		L9	B/F, G/F, 1/F - 3/F, 5/F - 12/F, 15/F - 23/F & 25/F - 32/F
	5	L10	2/F, 3/F, 5/F - 12/F & 15/F - 21/F
		L11	G/F, 1/F - 3/F, 5/F - 12/F & 15/F - 21/F
	3 nos. of "Schindler" (Model No.: Schindler 5500MRL) passenger lifts are provided for shuttle lift lobbies at Clubhouse and Podium		
	Shuttle Lift Lobby	Lift No.	Floor Served
	Clubhouse	L12 and L13	B/F, G/F, 1/F & 2/F
	Podium	L14	B/F, G/F & 2/F
	1 no. of "Schindler" (Model No.: Schindler 5500MRL) service lift is provided for Podium		
Podium	L15	G/F & 2/F	
(b) Letter box	Stainless steel letter box is provided.		
(c) Refuse collection	Refuse storage and material recovery room is provided in the common area of each residential floor of Towers. Central refuse storage and material recovery chamber is provided on G/F for collection and removal of refuse by cleaners.		
(d) Water meter, electricity meter and gas meter	Separate water meter for individual residential unit is provided in water meter cabinet on each residential floor of Towers. Separate electricity meter for individual residential unit is provided in Electric Meter Room on each residential floor of Towers. Separate gas meter is provided in the Kitchen of individual residential unit except residential unit with Open Kitchen.		

The Vendor undertakes that if lifts or appliances of the specified brand name or model number are not installed in the Phase, lifts or appliances of comparable quality will be installed.

4. 雜項			
細項	描述		
(a) 升降機	設有 11 部「迅達」客用升降機 (產品型號：迅達7000) 提供於第1座、第2座、第3座及第5座。		
	座	升降機編號	所到樓層
	1	L1 及 L2	2樓、3樓、5樓至12樓、15樓至23樓及25樓至32樓
		L3	地下、1樓至3樓、5樓至12樓、15樓至23樓及25樓至32樓
	2	L4 及 L5	2樓、3樓、5樓至12樓、15樓至23樓及25樓至32樓
		L6	地庫、地下、1樓至3樓、5樓至12樓、15樓至23樓及25樓至32樓
	3	L7 及 L8	2樓、3樓、5樓至12樓、15樓至23樓及25樓至32樓
		L9	地庫、地下、1樓至3樓、5樓至12樓、15樓至23樓及25樓至32樓
	5	L10	2樓、3樓、5樓至12樓及15樓至21樓
		L11	地下、1樓至3樓、5樓至12樓及15樓至21樓
	於會所及平台大堂之穿梭升降機大堂設有3部「迅達」客用升降機 (產品型號：迅達5500MRL)		
	穿梭升降機大堂	升降機編號	所到樓層
	會所	L12 及 L13	地庫、地下、1樓及2樓
	平台	L14	地庫、地下及2樓
	於平台設有1部「迅達」載貨升降機 (產品型號：迅達5500MRL)		
平台	L15	地下及2樓	
(b) 信箱	設置不銹鋼信箱。		
(c) 垃圾收集	垃圾及物料回收室位於大廈每層住宅樓層之公用地方，並由清潔工人收集及運送到地下之中央垃圾及物料回收房處理及運走。		
(d) 水錶、電錶及氣體錶	每戶住宅單位之獨立水錶安裝於大廈每層住宅樓層之水錶櫃內。每戶住宅單位之獨立電錶安裝於大廈每層住宅樓層之電錶房內。每戶住宅之廚房內安裝獨立煤氣錶，採用開放式廚房的住宅單位除外。		

賣方承諾如期數中沒有安裝指明的品牌名稱或產品型號的升降機或設備，便會安裝品質相若的升降機或設備。

23 FITTINGS, FINISHES AND APPLIANCES 裝置、裝修物料及設備

5. SECURITY FACILITIES

Door phone is provided for all residential unit and connected to caretaker counter at main entrance of each tower on 2/F.

Octopus card readers for access control are provided at main entrance of the phase, main entrance of each tower on 2/F, carpark lift lobbies, shuttle lift lobbies entrance on G/F and clubhouse entrance.

CCTV system is provided at entrance of the phase, main entrance of each tower on 2/F, major passages, landscape area, clubhouse, carpark lift lobbies, shuttle lift lobbies and inside lift cars and linked to the central security console.

Vehicular control system is provided at vehicular entrance.

6. APPLIANCES

As set out in the 'Appliances Schedule'.

The Vendor undertakes that if lifts or appliances of the specified brand name or model number are not installed in the Phase, lifts or appliances of comparable quality will be installed.

5. 保安設施

所有住宅單位均裝設對講機接駁到該大廈2樓入口大堂的管理處。

期數的主要入口、大廈2樓入口大堂、停車場升降機大堂、穿梭升降機大堂地下入口及會所入口均裝有八達通讀卡器。

期數的入口、每座大廈的2樓入口大堂、主要通道、園景區、會所、停車場升降機大堂、穿梭升降機大堂及升降機內均裝設閉路電視接駁到保安人員辦事處。

車道入口設有出入控制閘。

6. 設備

於「設備說明表」列出。

賣方承諾如期數中沒有安裝指明的品牌名稱或產品型號的升降機或設備，便會安裝品質相若的升降機或設備。

23 FITTINGS, FINISHES AND APPLIANCES 裝置、裝修物料及設備

Tower 1 - Appliances Schedule 第1座 – 設備說明表

Location 位置	Appliances 設備	Brand Name 品牌	Model Number 產品型號	Floor and Unit Number 樓層及單位					
				3/F, 5/F - 12/F, 15/F - 23/F & 25/F - 32/F 3樓、5樓至12樓、15樓至23樓及25樓至32樓					
				A	B	C	D	E	F
Living Room / Dining Room and Bedroom 客廳/ 飯廳及睡房	Split Type Air-conditioner (Indoor Unit) 分體式空調機 (室內機)	TOSHIBA 東芝	RAS-10N3KCV(HK)1	✓	✓	✓	✓	✓	✓
			RAS-13N3KCV(HK)	✓	✓	-	✓	-	✓
			RAS-18N3KCV(HK)	✓	✓	✓	✓	✓	✓
	Split Type Air-conditioner (Outdoor Unit) 分體式空調機 (室外機)	TOSHIBA 東芝	RAS-10N3ACV-1	✓	✓	✓	✓	✓	✓
			RAS-13N3ACV	✓	✓	-	✓	-	✓
			RAS-18N3ACV	✓	✓	✓	✓	✓	✓
Living Room / Dining Room 客廳/ 飯廳	Doorphone 對講機	URMET	1150/1	✓	✓	✓	✓	✓	✓
	Exhaust Fan 抽氣扇	Ostberg 奧斯博格	LPK125B	-	-	-	-	✓	-
Bathroom 浴室	Exhaust Fan 抽氣扇	KDK	15WHC08	✓	-	-	-	-	✓
		Panasonic 樂聲牌	FV-27CMH1	-	✓	✓	✓	✓	-
		Ostberg 奧斯博格	LPK125B	-	-	✓	-	-	-
	Electric Water Heater 電熱水爐	Stiebel Eltron 斯寶亞創	DHE18SLi	-	-	✓	-	✓	-
Kitchen / Open Kitchen 廚房/ 開放式廚房	Built-in Single Wok Gas Burner 嵌入式煤氣單頭煮食爐	Mia Cucina	MY31C	✓	✓	-	✓	-	✓
	Built-in Double Wok Gas Burner 嵌入式煤氣雙頭煮食爐	Mia Cucina	MY32C	✓	✓	-	✓	-	✓
	Built-in Induction Hob 電磁爐	Mia Cucina	FEN32C	-	-	✓	-	✓	-
	Wall Mounted Chimney Hood 掛牆煙囪式抽油煙機	Siemens 西門子	LC91BE542B	✓	✓	-	✓	-	✓
	Telescopic Hood 拉趟式抽油煙機	Siemens 西門子	LI67SA530B	-	-	✓	-	✓	-
	Refrigerator 雪櫃	Siemens 西門子	KG36NVI35K	✓	✓	-	✓	-	✓
	Built-in Refrigerator 嵌入式雪櫃	Siemens 西門子	KI86NAF31K	-	-	✓	-	✓	-
	Fully Integrated Washer Dryer 嵌入式洗衣乾衣機	Siemens 西門子	WK14D321HK	✓	✓	✓	✓	✓	✓
	Built-in Steam Oven 嵌入式蒸爐	Siemens 西門子	CD634GBS1	✓	✓	-	✓	-	✓
	Built-in Microwave Oven with Grill 嵌入式微波燒烤爐	Siemens 西門子	BE634LGS1B	-	-	✓	-	✓	-
	Gas Water Heater 煤氣熱水爐	TGC 煤氣公司	TNJW161TFQL	✓	✓	-	✓	-	✓
	Electric Water Heater 電熱水爐	Stiebel Eltron 斯寶亞創	DHM6	-	-	✓	-	✓	-
	Exhaust Fan 抽氣扇	KDK	20WHC08	✓	✓	-	✓	-	✓

The Vendor undertakes that if lifts or appliances of the specified brand name or model number are not installed in the Phase, lifts or appliances of comparable quality will be installed.

Remarks:

1. "✓" denotes such appliance(s) is / are provided and / or installed in the residential property.
2. "-" denotes "Not provided".
3. 4/F, 13/F, 14/F & 24/F are omitted.

賣方承諾如期數中沒有安裝指明的品牌名稱或產品型號的升降機或設備，便會安裝品質相若的升降機或設備。

備註：

1. 「✓」表示此設備於該住宅物業內提供及/或安裝。
2. 「-」代表「不提供」。
3. 不設4樓、13樓、14樓及24樓。

23 FITTINGS, FINISHES AND APPLIANCES 裝置、裝修物料及設備

Tower 2 - Appliances Schedule 第2座 – 設備說明表

Location 位置	Appliances 設備	Brand Name 品牌	Model Number 產品型號	Floor and Unit Number 樓層及單位									
				3/F, 5/F - 12/F, 15/F - 23/F & 25/F - 32/F 3樓、5樓至12樓、15樓至23樓及25樓至32樓									
				A	B	C	D	E	F	G	H	J	
Living Room / Dining Room / Master Bedroom and Bedroom 客廳/ 飯廳/ 主人睡房及睡房	Split Type Air-conditioner (Indoor Unit) 分體式空調機 (室內機)	TOSHIBA 東芝	RAS-10N3KCV(HK)1	✓	✓	✓	✓	✓	✓	✓	✓	✓	✓
			RAS-13N3KCV(HK)	✓	-	✓	✓	✓	✓	-	✓	✓	
			RAS-18N3KCV(HK)	✓	✓	✓	✓	✓	✓	✓	✓	✓	
	Split Type Air-conditioner (Outdoor Unit) 分體式空調機 (室外機)	TOSHIBA 東芝	RAS-10N3ACV-1	✓	✓	✓	✓	✓	✓	✓	✓	✓	✓
			RAS-13N3ACV	✓	-	✓	✓	✓	✓	-	✓	✓	
			RAS-18N3ACV	✓	✓	✓	✓	✓	✓	✓	✓	✓	
Living Room / Dining Room 客廳/ 飯廳	Doorphone 對講機	URMET	1150/1	✓	✓	✓	✓	✓	✓	✓	✓	✓	
Bathroom / Master Bathroom 浴室/ 主人浴室	Exhaust Fan 抽氣扇	KDK	15WHC08	-	✓	✓	-	-	✓	-	✓	-	
		Panasonic 樂聲牌	FV-27CMH1	✓	-	-	✓	✓	-	✓	-	✓	
		Ostberg 奧斯博格	LPK125B	-	-	-	-	-	-	✓	-	-	
	Electric Water Heater 電熱水爐	Stiebel Eltron 斯寶亞創	DHE18SLi	-	-	-	-	-	-	✓	-	-	
Kitchen / Open Kitchen 廚房/ 開放式廚房	Built-in Single Wok Gas Burner 嵌入式煤氣單頭煮食爐	Mia Cucina	MY31C	✓	✓	✓	✓	✓	✓	✓	-	✓	✓
	Built-in Double Wok Gas Burner 嵌入式煤氣雙頭煮食爐	Mia Cucina	MY32C	✓	✓	✓	✓	✓	✓	✓	-	✓	✓
	Built-in Induction Hob 電磁爐	Mia Cucina	FEN32C	-	-	-	-	-	-	-	✓	-	-
	Wall Mounted Chimney Hood 掛牆煙囪式抽油煙機	Siemens 西門子	LC91BE542B	✓	✓	✓	✓	✓	✓	✓	-	✓	✓
	Telescopic Hood 拉趟式抽油煙機	Siemens 西門子	LI67SA530B	-	-	-	-	-	-	-	✓	-	-
	Refrigerator 雪櫃	Siemens 西門子	KG36NVI35K	✓	✓	✓	✓	✓	✓	✓	-	✓	✓
	Built-in Refrigerator 嵌入式雪櫃	Siemens 西門子	KI86NAF31K	-	-	-	-	-	-	-	✓	-	-
	Fully Integrated Washer Dryer 嵌入式洗衣乾衣機	Siemens 西門子	WK14D321HK	✓	✓	✓	✓	✓	✓	✓	✓	✓	✓
	Built-in Steam Oven 嵌入式蒸爐	Siemens 西門子	CD634GBS1	✓	✓	✓	✓	✓	✓	✓	-	✓	✓
	Built-in Microwave Oven with Grill 嵌入式微波燒烤爐	Siemens 西門子	BE634LGS1B	-	-	-	-	-	-	-	✓	-	-
	Gas Water Heater 煤氣熱水爐	TGC 煤氣公司	TNJW161TFQL	✓	-	-	✓	✓	✓	✓	-	-	✓
			TNJW221TFQL	-	✓	✓	-	-	-	-	-	-	✓
	Electric Water Heater 電熱水爐	Stiebel Eltron 斯寶亞創	DHM6	-	-	-	-	-	-	-	✓	-	-
Exhaust Fan 抽氣扇	KDK	20WHC08	✓	✓	✓	✓	✓	✓	✓	✓	-	✓	✓

The Vendor undertakes that if lifts or appliances of the specified brand name or model number are not installed in the Phase, lifts or appliances of comparable quality will be installed.

Remarks:

1. "✓" denotes such appliance(s) is / are provided and / or installed in the residential property.
2. "-" denotes "Not provided".
3. 4/F, 13/F, 14/F & 24/F are omitted.

賣方承諾如期數中沒有安裝指明的品牌名稱或產品型號的升降機或設備，便會安裝品質相若的升降機或設備。

備註：

1. 「✓」表示此設備於該住宅物業內提供及/或安裝。
2. 「-」代表「不提供」。
3. 不設4樓、13樓、14樓及24樓。

23 FITTINGS, FINISHES AND APPLIANCES 裝置、裝修物料及設備

Tower 3 - Appliances Schedule 第3座 – 設備說明表

Location 位置	Appliances 設備	Brand Name 品牌	Model Number 產品型號	Floor and Unit Number 樓層及單位										
				3/F, 5/F - 12/F, 15/F - 23/F & 25/F - 32/F 3樓、5樓至12樓、15樓至23樓及25樓至32樓										
				A	B	C	D	E	F	G	H	J		
Living Room / Dining Room / Master Bedroom and Bedroom 客廳/ 飯廳/ 主人睡房及睡房	Split Type Air-conditioner (Indoor Unit) 分體式空調機 (室內機)	TOSHIBA 東芝	RAS-10N3KCV(HK)1	✓	✓	✓	✓	✓	✓	✓	✓	✓	✓	
			RAS-13N3KCV(HK)	✓	✓	✓	-	-	✓	✓	✓	✓	✓	
			RAS-18N3KCV(HK)	✓	✓	-	✓	✓	✓	✓	✓	✓	✓	✓
	Split Type Air-conditioner (Outdoor Unit) 分體式空調機 (室外機)	TOSHIBA 東芝	RAS-10N3ACV-1	✓	✓	✓	✓	✓	✓	✓	✓	✓	✓	✓
			RAS-13N3ACV	✓	✓	✓	-	-	✓	✓	✓	✓	✓	✓
			RAS-18N3ACV	✓	✓	-	✓	✓	✓	✓	✓	✓	✓	✓
Living Room / Dining Room 客廳/ 飯廳	Doorphone 對講機	URMET	1150/1	✓	✓	✓	✓	✓	✓	✓	✓	✓	✓	
Bathroom / Master Bathroom 浴室/ 主人浴室	Exhaust Fan 抽氣扇	KDK	15WHC08	-	✓	✓	-	-	-	✓	-	✓	✓	
		Panasonic 樂聲牌	FV-27CMH1	✓	-	-	✓	✓	✓	-	✓	-	-	
		Ostberg 奧斯博格	LPK125B	-	-	-	✓	✓	-	-	-	-	-	
	Electric Water Heater 電熱水爐	Stiebel Eltron 斯寶亞創	DHE18SLi	-	-	-	✓	✓	-	-	-	-	-	
Kitchen / Open Kitchen 廚房/ 開放式廚房	Built-in Single Wok Gas Burner 嵌入式煤氣單頭煮食爐	Mia Cucina	MY31C	✓	✓	✓	-	-	✓	✓	✓	✓	✓	
	Built-in Double Wok Gas Burner 嵌入式煤氣雙頭煮食爐	Mia Cucina	MY32C	✓	✓	✓	-	-	✓	✓	✓	✓	✓	
	Built-in Induction Hob 電磁爐	Mia Cucina	FEN32C	-	-	-	✓	✓	-	-	-	-	-	
	Wall Mounted Chimney Hood 掛牆煙囪式抽油煙機	Siemens 西門子	LC91BE542B	✓	✓	✓	-	-	✓	✓	✓	✓	✓	
	Telescopic Hood 拉趟式抽油煙機	Siemens 西門子	LI67SA530B	-	-	-	✓	✓	-	-	-	-	-	
	Refrigerator 雪櫃	Siemens 西門子	KG36NVI35K	✓	✓	✓	-	-	✓	✓	✓	✓	✓	
	Built-in Refrigerator 嵌入式雪櫃	Siemens 西門子	KI86NAF31K	-	-	-	✓	✓	-	-	-	-	-	
	Fully Integrated Washer Dryer 嵌入式洗衣乾衣機	Siemens 西門子	WK14D321HK	✓	✓	✓	✓	✓	✓	✓	✓	✓	✓	
	Built-in Steam Oven 嵌入式蒸爐	Siemens 西門子	CD634GBS1	✓	✓	✓	-	-	✓	✓	✓	✓	✓	
	Built-in Microwave Oven with Grill 嵌入式微波燒烤爐	Siemens 西門子	BE634LGS1B	-	-	-	✓	✓	-	-	-	-	-	
	Gas Water Heater 煤氣熱水爐	TGC 煤氣公司	TNJW161TFQL	✓	-	-	-	-	-	✓	-	-	✓	
			TNJW221TFQL	-	✓	✓	-	-	-	-	✓	✓	-	
	Electric Water Heater 電熱水爐	Stiebel Eltron 斯寶亞創	DHM6	-	-	-	✓	✓	-	-	-	-	-	
	Exhaust Fan 抽氣扇	KDK	20WHC08	✓	✓	✓	-	-	✓	✓	✓	✓	✓	

The Vendor undertakes that if lifts or appliances of the specified brand name or model number are not installed in the Phase, lifts or appliances of comparable quality will be installed.

Remarks:

1. "✓" denotes such appliance(s) is / are provided and / or installed in the residential property.
2. "-" denotes "Not provided".
3. 4/F, 13/F, 14/F & 24/F are omitted.

賣方承諾如期數中沒有安裝指明的品牌名稱或產品型號的升降機或設備，便會安裝品質相若的升降機或設備。

備註：

1. 「✓」表示此設備於該住宅物業內提供及/或安裝。
2. 「-」代表「不提供」。
3. 不設4樓、13樓、14樓及24樓。

23 FITTINGS, FINISHES AND APPLIANCES 裝置、裝修物料及設備

Tower 5 - Appliances Schedule 第5座 – 設備說明表

Location 位置	Appliances 設備	Brand Name 品牌	Model Number 產品型號	Floor and Unit Number 樓層及單位					
				3/F, 5/F - 12/F & 15/F - 21/F 3樓、5樓至12樓及15樓至21樓					
				A	B	C	D	E	F
Living Room / Dining Room and Bedroom 客廳/ 飯廳及睡房	Split Type Air-conditioner (Indoor Unit) 分體式空調機 (室內機)	TOSHIBA 東芝	RAS-10N3KCV(HK)1	✓	✓	✓	✓	✓	✓
			RAS-13N3KCV(HK)	✓	✓	-	-	-	✓
			RAS-18N3KCV(HK)	✓	✓	✓	✓	✓	✓
	Split Type Air-conditioner (Outdoor Unit) 分體式空調機 (室外機)	TOSHIBA 東芝	RAS-10N3ACV-1	✓	✓	✓	✓	✓	✓
			RAS-13N3ACV	✓	✓	-	-	-	✓
			RAS-18N3ACV	✓	✓	✓	✓	✓	✓
Living Room / Dining Room 客廳/ 飯廳	Doorphone 對講機	URMET	1150/1	✓	✓	✓	✓	✓	✓
Bathroom 浴室	Exhaust Fan 抽氣扇	KDK	15WHC08	✓	-	-	✓	-	✓
		Panasonic 樂聲牌	FV-27CMH1	-	✓	✓	-	✓	-
		Ostberg 奧斯博格	LPK125B	-	-	✓	-	✓	-
	Electric Water Heater 電熱水爐	Stiebel Eltron 斯寶亞創	DHE18SLi	-	-	✓	-	✓	-
Kitchen / Open Kitchen 廚房/ 開放式廚房	Built-in Single Wok Gas Burner 嵌入式煤氣單頭煮食爐	Mia Cucina	MY31C	✓	✓	-	✓	-	✓
	Built-in Double Wok Gas Burner 嵌入式煤氣雙頭煮食爐	Mia Cucina	MY32C	✓	✓	-	✓	-	✓
	Built-in Induction Hob 電磁爐	Mia Cucina	FEN32C	-	-	✓	-	✓	-
	Wall Mounted Chimney Hood 掛牆煙囪式抽油煙機	Siemens 西門子	LC91BE542B	✓	✓	-	✓	-	✓
	Telescopic Hood 拉趟式抽油煙機	Siemens 西門子	LI67SA530B	-	-	✓	-	✓	-
	Refrigerator 雪櫃	Siemens 西門子	KG36NVI35K	✓	✓	-	✓	-	✓
	Built-in Refrigerator 嵌入式雪櫃	Siemens 西門子	KI86NAF31K	-	-	✓	-	✓	-
	Fully Integrated Washer Dryer 嵌入式洗衣乾衣機	Siemens 西門子	WK14D321HK	✓	✓	✓	✓	✓	✓
	Built-in Steam Oven 嵌入式蒸爐	Siemens 西門子	CD634GBS1	✓	✓	-	✓	-	✓
	Built-in Microwave Oven with Grill 嵌入式微波燒烤爐	Siemens 西門子	BE634LGS1B	-	-	✓	-	✓	-
	Gas Water Heater 煤氣熱水爐	TGC 煤氣公司	TNJW161TFQL	✓	✓	-	✓	-	✓
	Electric Water Heater 電熱水爐	Stiebel Eltron 斯寶亞創	DHM6	-	-	✓	-	✓	-
Exhaust Fan 抽氣扇	KDK	20WHC08	✓	✓	-	✓	-	✓	

The Vendor undertakes that if lifts or appliances of the specified brand name or model number are not installed in the Phase, lifts or appliances of comparable quality will be installed.

Remarks:

1. "✓" denotes such appliance(s) is / are provided and / or installed in the residential property.
2. "-" denotes "Not provided".
3. 4/F, 13/F & 14/F are omitted.

賣方承諾如期數中沒有安裝指明的品牌名稱或產品型號的升降機或設備，便會安裝品質相若的升降機或設備。

備註：

1. 「✓」表示此設備於該住宅物業內提供及/或安裝。
2. 「-」代表「不提供」。
3. 不設4樓、13樓及14樓。

23 FITTINGS, FINISHES AND APPLIANCES 裝置、裝修物料及設備

Tower 1 - Schedule of Mechanical & Electrical Provisions of Residential Properties 第1座 – 住宅物業機電裝置數量說明表

Floor 樓層		3/F, 5/F - 12/F, 15/F - 23/F & 25/F - 32/F 3樓、5樓至12樓、15樓至23樓及25樓至32樓					
Unit 單位		A	B	C	D	E	F
Main Entrance 大門入口	Door Bell Push Button 門鈴按鈕	1	1	1	1	1	1
Living Room / Dining Room / Corridor 客廳/ 飯廳/ 走廊	Master Lighting Switch 燈掣總開關	1	1	1	1	1	1
	TV/FM Outlet 電視及電台接收插座	2	2	2	2	2	2
	Telephone Outlet 電話插座	2	2	2	2	2	2
	13A Twin Socket Outlet 13A雙位電插座	3	3	3	3	3	3
	Connection Point / Switch for Indoor Air-conditioner Unit 室內冷氣機接線位/ 開關	1	1	1	1	1	1
	Switch for Electric Water Heater 電熱水爐開關掣	-	-	2	-	2	-
	Switch for Exhaust Fan 抽氣扇開關掣	2	2	2	2	2	2
	Connection Point for Exhaust Fan 抽氣扇接線位	-	-	-	-	1	-
	Lighting Switch 燈掣	12	11	7	11	7	11
	Lighting Point 燈位	5	3	3	3	3	4
	Door Bell 門鈴	-	-	1	-	1	-
Smoke Detector 煙霧感應器	-	-	1	-	1	-	
Bedroom 睡房	TV/FM Outlet 電視及電台接收插座	-	-	1	-	1	-
	Telephone Outlet 電話插座	-	-	1	-	1	-
	13A Twin Socket Outlet 13A雙位電插座	-	-	2	-	2	-
	Connection Point / Switch for Indoor Air-conditioner Unit 室內冷氣機接線位/ 開關	-	-	1	-	1	-
	Lighting Switch 燈掣	-	-	4	-	4	-
	Lighting Point 燈位	-	-	1	-	1	-
Bedroom 1 睡房 1	TV/FM Outlet 電視及電台接收插座	1	1	-	1	-	1
	Telephone Outlet 電話插座	1	1	-	1	-	1
	13A Twin Socket Outlet 13A雙位電插座	2	2	-	2	-	2
	Connection Point / Switch for Indoor Air-conditioner Unit 室內冷氣機接線位/ 開關	1	1	-	1	-	1
	Lighting Switch 燈掣	1	1	-	1	-	1
	Lighting Point 燈位	1	1	-	1	-	1

Remarks:

- 4/F, 13/F, 14/F & 24/F are omitted.
- The symbol "-" as shown in the above table denotes "Not applicable".

備註:

- 不設4樓、13樓、14樓及24樓。
- 上表「-」代表不適用。

23 FITTINGS, FINISHES AND APPLIANCES

裝置、裝修物料及設備

Tower 1 - Schedule of Mechanical & Electrical Provisions of Residential Properties 第1座 – 住宅物業機電裝置數量說明表

Floor 樓層		3/F, 5/F - 12/F, 15/F - 23/F & 25/F - 32/F 3樓、5樓至12樓、15樓至23樓及25樓至32樓					
Unit 單位		A	B	C	D	E	F
Bedroom 2 睡房 2	TV/FM Outlet 電視及電台接收插座	1	1	-	1	-	1
	Telephone Outlet 電話插座	1	1	-	1	-	1
	13A Twin Socket Outlet 13A雙位電插座	1	1	-	1	-	1
	Connection Point / Switch for Indoor Air-conditioner Unit 室內冷氣機接線位/ 開關	1	1	-	1	-	1
	Lighting Switch 燈掣	1	1	-	1	-	1
	Lighting Point 燈位	1	1	-	1	-	1
Kitchen 廚房	13A Twin Socket Outlet 13A雙位電插座	2	2	-	2	-	2
	13A Single Socket Outlet 13A單位電插座	3	3	-	3	-	3
	13A Twin Socket Outlet for Gas Burner 13A雙位電插座供煤氣煮食爐	1	1	-	1	-	1
	Connection Point for Exhaust Fan 抽氣扇接線位	1	1	-	1	-	1
	Connection Point for Kitchen Cabinet Lighting 廚房櫃燈接線位	1	1	-	1	-	1
	Connection Point for Cooker Hood 抽油煙機接線位	1	1	-	1	-	1
	Connection Point for Gas Water Heater 煤氣熱水爐接線位	1	1	-	1	-	1
	Washing Machine Connection Point (Water Inlet) 洗衣機接駁點 (來水位)	1	1	-	1	-	1
	Washing Machine Connection Point (Water Outlet) 洗衣機接駁點 (去水位)	1	1	-	1	-	1
	Lighting Switch 燈掣	1	1	-	1	-	1
	Lighting Point 燈位	2	2	-	2	-	2
	Miniature Circuit Breakers Board 總電掣箱	1	1	-	1	-	1
	Towngas Water Heater Remote Controller 煤氣熱水爐溫度控制器	1	1	-	1	-	1
Door Bell 門鈴	1	1	-	1	-	1	

Remarks:

- 4/F, 13/F, 14/F & 24/F are omitted.
- The symbol "-" as shown in the above table denotes "Not applicable".

備註:

- 不設4樓、13樓、14樓及24樓。
- 上表「-」代表不適用。

23 FITTINGS, FINISHES AND APPLIANCES 裝置、裝修物料及設備

Tower 1 - Schedule of Mechanical & Electrical Provisions of Residential Properties 第1座 – 住宅物業機電裝置數量說明表

Floor 樓層		3/F, 5/F - 12/F, 15 - 23/F & 25/F - 32/F 3樓, 5樓至12樓, 15樓至23樓至25樓至32樓					
Unit 單位		A	B	C	D	E	F
Open Kitchen 開放式廚房	13A Twin Socket Outlet 13A雙位電插座	-	-	2	-	2	-
	13A Single Socket Outlet 13A單位電插座	-	-	3	-	3	-
	Connection Point for Kitchen Cabinet Lighting 廚房櫃燈接線位	-	-	1	-	1	-
	Connection Point for Cooker Hood 抽油煙機接線位	-	-	1	-	1	-
	Connection Point for Induction Cooker 電煮食爐接線位	-	-	1	-	1	-
	Connection Point for Electric Water Heater 電熱水爐接線位	-	-	1	-	1	-
	Washing Machine Connection Point (Water Inlet) 洗衣機接駁點 (來水位)	-	-	1	-	1	-
	Washing Machine Connection Point (Water Outlet) 洗衣機接駁點 (去水位)	-	-	1	-	1	-
	Lighting Point 燈位	-	-	1	-	1	-
	Miniature Circuit Breakers Board 總電掣箱	-	-	1	-	1	-
	Sprinkler Head 消防花灑頭	-	-	2	-	2	-
Bathroom 浴室	13A Single Socket Outlet 13A單位電插座	1	1	1	1	1	1
	Lighting Point 燈位	2	2	2	2	2	2
	Connection Point for Electric Water Heater 電熱水爐接線位	-	-	1	-	1	-
	Towngas Water Heater Remote Controller 煤氣熱水爐溫度控制器	1	1	-	1	-	1
	Connection Point for Exhaust Fan 抽氣扇接線位	1	1	2	1	1	1
Connection Point for Mirror Cabinet Lighting 鏡櫃燈接線位	1	1	1	1	1	1	
Air Conditioning Platform 空調機平台	Isolator for Outdoor Air-conditioner 室外冷氣機開關掣	3	3	2	3	2	3
Balcony 露台	Lighting Point 燈位	1	1	1	1	1	1
Utility Platform 工作平台	Lighting Point 燈位	1	1	1	1	1	1

Remarks:

- 4/F, 13/F, 14/F & 24/F are omitted.
- The symbol "-" as shown in the above table denotes "Not applicable".

備註:

- 不設4樓、13樓、14樓及24樓。
- 上表「-」代表不適用。

23 FITTINGS, FINISHES AND APPLIANCES 裝置、裝修物料及設備

Tower 2 - Schedule of Mechanical & Electrical Provisions of Residential Properties 第2座 – 住宅物業機電裝置數量說明表

Floor 樓層		3/F, 5/F - 12/F, 15/F - 23/F & 25/F - 32/F 3樓、5樓至12樓、15樓至23樓及25樓至32樓								
Unit 單位		A	B	C	D	E	F	G	H	J
Main Entrance 大門入口	Door Bell Push Button 門鈴按鈕	1	1	1	1	1	1	1	1	1
Living Room / Dining Room / Corridor 客廳/ 飯廳/ 走廊	Master Lighting Switch 燈掣總開關	1	1	1	1	1	1	1	1	1
	TV/FM Outlet 電視及電台接收插座	2	2	2	2	2	2	2	2	2
	Telephone Outlet 電話插座	2	2	2	2	2	2	2	2	2
	13A Twin Socket Outlet 13A雙位電插座	3	3	3	3	3	3	3	3	3
	Connection Point / Switch for Indoor Air-conditioner Unit 室內冷氣機接線位/ 開關	1	2	2	1	1	1	1	2	1
	Switch for Electric Water Heater 電熱水爐開關掣	-	-	-	-	-	-	2	-	-
	Switch for Exhaust Fan 抽氣扇開關掣	2	2	2	2	2	2	2	2	2
	Lighting Switch 燈掣	11	12	12	11	11	11	7	12	11
	Lighting Point 燈位	3	5	5	3	3	4	3	5	3
	Door Bell 門鈴	-	-	-	-	-	-	1	-	-
Smoke Detector 煙霧感應器	-	-	-	-	-	-	1	-	-	
Master Bedroom 主人睡房	TV/FM Outlet 電視及電台接收插座	-	1	1	-	-	-	-	1	-
	Telephone Outlet 電話插座	-	1	1	-	-	-	-	1	-
	13A Twin Socket Outlet 13A雙位電插座	-	2	2	-	-	-	-	2	-
	Connection Point / Switch for Indoor Air-conditioner Unit 室內冷氣機接線位/ 開關	-	1	1	-	-	-	-	1	-
	Lighting Switch 燈掣	-	4	4	-	-	-	-	4	-
	Lighting Point 燈位	-	1	1	-	-	-	-	1	-
Bedroom 睡房	Switch for Exhaust Fan 抽氣扇開關掣	-	1	1	-	-	-	-	1	-
	TV/FM Outlet 電視及電台接收插座	-	-	-	-	-	-	1	-	-
	Telephone Outlet 電話插座	-	-	-	-	-	-	1	-	-
	13A Twin Socket Outlet 13A雙位電插座	-	-	-	-	-	-	2	-	-
	Connection Point / Switch for Indoor Air-conditioner Unit 室內冷氣機接線位/ 開關	-	-	-	-	-	-	1	-	-
	Lighting Switch 燈掣	-	-	-	-	-	-	4	-	-
Lighting Point 燈位	-	-	-	-	-	-	1	-	-	

Remarks:

- 4/F, 13/F, 14/F & 24/F are omitted.
- The symbol "-" as shown in the above table denotes "Not applicable".

備註:

- 不設4樓、13樓、14樓及24樓。
- 上表「-」代表不適用。

23 FITTINGS, FINISHES AND APPLIANCES 裝置、裝修物料及設備

Tower 2 - Schedule of Mechanical & Electrical Provisions of Residential Properties 第2座 – 住宅物業機電裝置數量說明表

Floor 樓層		3/F, 5/F - 12/F, 15/F - 23/F & 25/F - 32/F 3樓、5樓至12樓、15樓至23樓及25樓至32樓								
Unit 單位		A	B	C	D	E	F	G	H	J
Bedroom 1 睡房 1	TV/FM Outlet 電視及電台接收插座	1	1	1	1	1	1	-	1	1
	Telephone Outlet 電話插座	1	1	1	1	1	1	-	1	1
	13A Twin Socket Outlet 13A雙位電插座	2	1	1	2	2	2	-	1	2
	Connection Point / Switch for Indoor Air-conditioner Unit 室內冷氣機接線位/ 開關	1	1	1	1	1	1	-	1	1
	Lighting Switch 燈掣	2	1	1	2	2	2	-	1	2
	Lighting Point 燈位	1	1	1	1	1	1	-	1	1
Bedroom 2 睡房 2	TV/FM Outlet 電視及電台接收插座	1	1	1	1	1	1	-	1	1
	Telephone Outlet 電話插座	1	1	1	1	1	1	-	1	1
	13A Twin Socket Outlet 13A雙位電插座	1	1	1	1	1	1	-	1	1
	Connection Point / Switch for Indoor Air-conditioner Unit 室內冷氣機接線位/ 開關	1	1	1	1	1	1	-	1	1
	Lighting Switch 燈掣	1	1	1	1	1	1	-	1	1
	Lighting Point 燈位	1	1	1	1	1	1	-	1	1
Store 儲物房	Lighting Switch 燈掣	-	1	1	-	-	-	-	1	-
	Lighting Point 燈位	-	1	1	-	-	-	-	1	-
	Miniature Circuit Breakers Board 總電掣箱	-	1	1	-	-	-	-	1	-
	13A Single Socket Outlet 13A單位電插座	-	1	1	-	-	-	-	1	-
Kitchen 廚房	13A Twin Socket Outlet 13A雙位電插座	2	2	2	2	2	2	-	2	2
	13A Single Socket Outlet 13A單位電插座	3	3	3	3	3	3	-	3	3
	13A Twin Socket Outlet for Gas Burner 13A雙位電插座供煤氣煮食爐	1	1	1	1	1	1	-	1	1
	Connection Point for Exhaust Fan 抽氣扇接線位	1	1	1	1	1	1	-	1	1
	Connection Point for Kitchen Cabinet Lighting 廚房櫃燈接線位	1	1	1	1	1	1	-	1	1
	Connection Point for Cooker Hood 抽油煙機接線位	1	1	1	1	1	1	-	1	1
	Connection Point for Gas Water Heater 煤氣熱水爐接線位	1	1	1	1	1	1	-	1	1
	Washing Machine Connection Point (Water Inlet) 洗衣機接駁點 (來水位)	1	1	1	1	1	1	-	1	1
	Washing Machine Connection Point (Water Outlet) 洗衣機接駁點 (去水位)	1	1	1	1	1	1	-	1	1
	Lighting Point 燈位	2	2	2	2	2	2	-	2	2
	Miniature Circuit Breakers Board 總電掣箱	1	-	-	1	1	1	-	-	1
	Towngas Water Heater Remote Controller 煤氣熱水爐溫度控制器	1	1	1	1	1	1	-	1	1
	Door Bell 門鈴	1	1	1	1	1	1	-	1	1

Remarks:

- 4/F, 13/F, 14/F & 24/F are omitted.
- The symbol "-" as shown in the above table denotes "Not applicable".

備註:

- 不設4樓、13樓、14樓及24樓。
- 上表「-」代表不適用。

23 FITTINGS, FINISHES AND APPLIANCES 裝置、裝修物料及設備

Tower 2 - Schedule of Mechanical & Electrical Provisions of Residential Properties 第2座 – 住宅物業機電裝置數量說明表

Floor 樓層		3/F, 5/F - 12/F, 15/F - 23/F & 25/F - 32/F 3樓、5樓至12樓、15樓至23樓及25樓至32樓								
Unit 單位		A	B	C	D	E	F	G	H	J
Open Kitchen 開放式廚房	13A Twin Socket Outlet 13A雙位電插座	-	-	-	-	-	-	2	-	-
	13A Single Socket Outlet 13A單位電插座	-	-	-	-	-	-	3	-	-
	Connection Point for Kitchen Cabinet Lighting 廚房櫃燈接線位	-	-	-	-	-	-	1	-	-
	Connection Point for Cooker Hood 抽油煙機接線位	-	-	-	-	-	-	1	-	-
	Connection Point for Induction Cooker 電煮食爐接線位	-	-	-	-	-	-	1	-	-
	Connection Point for Electric Water Heater 電熱水爐接線位	-	-	-	-	-	-	1	-	-
	Washing Machine Connection Point (Water Inlet) 洗衣機接駁點 (來水位)	-	-	-	-	-	-	1	-	-
	Washing Machine Connection Point (Water Outlet) 洗衣機接駁點 (去水位)	-	-	-	-	-	-	1	-	-
	Lighting Point 燈位	-	-	-	-	-	-	1	-	-
	Miniature Circuit Breakers Board 總電掣箱	-	-	-	-	-	-	1	-	-
Sprinkler Head 消防花灑頭	-	-	-	-	-	-	2	-	-	
Master Bathroom 主人浴室	13A Single Socket Outlet 13A單位電插座	-	1	1	-	-	-	-	1	-
	Lighting Point 燈位	-	2	2	-	-	-	-	2	-
	Towngas Water Heater Remote Controller 煤氣熱水爐溫度控制器	-	1	1	-	-	-	-	1	-
	Connection Point for Exhaust Fan 抽氣扇接線位	-	1	1	-	-	-	-	1	-
	Connection Point for Mirror Cabinet Lighting 鏡櫃燈接線位	-	1	1	-	-	-	-	1	-
Bathroom 浴室	13A Single Socket Outlet 13A單位電插座	1	1	1	1	1	1	1	1	1
	Lighting Point 燈位	2	2	2	2	2	2	2	2	2
	Towngas Water Heater Remote Controller 煤氣熱水爐溫度控制器	1	1	1	1	1	1	-	1	1
	Connection Point for Electric Water Heater 電熱水爐接線位	-	-	-	-	-	-	1	-	-
	Connection Point for Exhaust Fan 抽氣扇接線位	1	1	1	1	1	1	2	1	1
Connection Point for Mirror Cabinet Lighting 鏡櫃燈接線位	1	1	1	1	1	1	1	1	1	
Air Conditioning Platform 空調機平台	Isolator for Outdoor Air-conditioner 室外冷氣機開關掣	3	5	5	3	3	3	2	5	3
Balcony 露台	Lighting Point 燈位	1	1	1	1	1	1	1	1	1
Utility Platform 工作平台	Lighting Point 燈位	1	1	1	1	1	1	1	1	1

Remarks:

- 4/F, 13/F, 14/F & 24/F are omitted.
- The symbol "-" as shown in the above table denotes "Not applicable".

備註:

- 不設4樓、13樓、14樓及24樓。
- 上表「-」代表不適用。

23 FITTINGS, FINISHES AND APPLIANCES 裝置、裝修物料及設備

Tower 3 - Schedule of Mechanical & Electrical Provisions of Residential Properties 第3座 – 住宅物業機電裝置數量說明表

Floor 樓層		3/F, 5/F - 12/F, 15/F - 23/F & 25/F - 32/F 3樓、5樓至12樓、15樓至23樓及25樓至32樓								
Unit 單位		A	B	C	D	E	F	G	H	J
Main Entrance 大門入口	Door Bell Push Button 門鈴按鈕	1	1	1	1	1	1	1	1	1
Living Room / Dining Room / Corridor 客廳/ 飯廳/ 走廊	Master Lighting Switch 燈掣總開關	1	1	1	1	1	1	1	1	1
	TV/FM Outlet 電視及電台接收插座	2	2	2	2	2	2	2	2	2
	Telephone Outlet 電話插座	2	2	2	2	2	2	2	2	2
	13A Twin Socket Outlet 13A雙位電插座	3	3	3	3	3	3	3	3	3
	Connection Point / Switch for Indoor Air-conditioner Unit 室內冷氣機接線位/ 開關	1	2	2	1	1	1	2	1	1
	Switch for Electric Water Heater 電熱水爐開關掣	-	-	-	2	2	-	-	-	-
	Switch for Exhaust Fan 抽氣扇開關掣	2	2	2	2	2	2	2	2	2
	Lighting Switch 燈掣	11	12	12	7	7	11	12	11	11
	Lighting Point 燈位	3	4	4	3	3	3	5	3	4
	Door Bell 門鈴	-	-	-	1	1	-	-	-	-
Smoke Detector 煙霧感應器	-	-	-	1	1	-	-	-	-	
Master Bedroom 主人睡房	TV/FM Outlet 電視及電台接收插座	-	1	1	-	-	-	1	1	-
	Telephone Outlet 電話插座	-	1	1	-	-	-	1	1	-
	13A Twin Socket Outlet 13A雙位電插座	-	2	2	-	-	-	2	2	-
	Connection Point / Switch for Indoor Air-conditioner Unit 室內冷氣機接線位/ 開關	-	1	1	-	-	-	1	1	-
	Lighting Switch 燈掣	-	4	4	-	-	-	4	4	-
	Lighting Point 燈位	-	1	1	-	-	-	1	1	-
Bedroom 睡房	Switch for Exhaust Fan 抽氣扇開關掣	-	1	1	-	-	-	1	1	-
	TV/FM Outlet 電視及電台接收插座	-	-	-	1	1	-	-	-	-
	Telephone Outlet 電話插座	-	-	-	1	1	-	-	-	-
	13A Twin Socket Outlet 13A雙位電插座	-	-	-	2	2	-	-	-	-
	Connection Point / Switch for Indoor Air-conditioner Unit 室內冷氣機接線位/ 開關	-	-	-	1	1	-	-	-	-
	Lighting Switch 燈掣	-	-	-	4	4	-	-	-	-
Lighting Point 燈位	-	-	-	1	1	-	-	-	-	

Remarks:

- 4/F, 13/F, 14/F & 24/F are omitted.
- The symbol "-" as shown in the above table denotes "Not applicable".

備註:

- 不設4樓、13樓、14樓及24樓。
- 上表「-」代表不適用。

23 FITTINGS, FINISHES AND APPLIANCES 裝置、裝修物料及設備

Tower 3 - Schedule of Mechanical & Electrical Provisions of Residential Properties 第3座 – 住宅物業機電裝置數量說明表

Floor 樓層		3/F, 5/F - 12/F, 15/F - 23/F & 25/F - 32/F 3樓、5樓至12樓、15樓至23樓及25樓至32樓								
Unit 單位		A	B	C	D	E	F	G	H	J
Bedroom 1 睡房 1	TV/FM Outlet 電視及電台接收插座	1	1	1	-	-	1	1	1	1
	Telephone Outlet 電話插座	1	1	1	-	-	1	1	1	1
	13A Twin Socket Outlet 13A雙位電插座	2	1	1	-	-	2	1	1	2
	Connection Point / Switch for Indoor Air-conditioner Unit 室內冷氣機接線位/ 開關	1	1	1	-	-	1	1	1	1
	Lighting Switch 燈掣	2	1	1	-	-	2	1	1	2
	Lighting Point 燈位	1	1	1	-	-	1	1	1	1
Bedroom 2 睡房 2	TV/FM Outlet 電視及電台接收插座	1	1	1	-	-	1	1	1	1
	Telephone Outlet 電話插座	1	1	1	-	-	1	1	1	1
	13A Twin Socket Outlet 13A雙位電插座	1	1	1	-	-	1	1	1	1
	Connection Point / Switch for Indoor Air-conditioner Unit 室內冷氣機接線位/ 開關	1	1	1	-	-	1	1	1	1
	Lighting Switch 燈掣	1	1	1	-	-	1	1	1	1
	Lighting Point 燈位	1	1	1	-	-	1	1	1	1
Store 儲物房	Lighting Switch 燈掣	-	1	1	-	-	-	1	1	-
	Lighting Point 燈位	-	1	1	-	-	-	1	1	-
	Miniature Circuit Breakers Board 總電掣箱	-	1	1	-	-	-	1	1	-
	13A Single Socket Outlet 13A單位電插座	-	1	1	-	-	-	1	1	-
Kitchen 廚房	13A Twin Socket Outlet 13A雙位電插座	2	2	2	-	-	2	2	2	2
	13A Single Socket Outlet 13A單位電插座	3	3	3	-	-	3	3	3	3
	13A Twin Socket Outlet for Gas Burner 13A雙位電插座供煤氣煮食爐	1	1	1	-	-	1	1	1	1
	Connection Point for Exhaust Fan 抽氣扇接線位	1	1	1	-	-	1	1	1	1
	Connection Point for Kitchen Cabinet Lighting 廚房櫃燈接線位	1	1	1	-	-	1	1	1	1
	Connection Point for Cooker Hood 抽油煙機接線位	1	1	1	-	-	1	1	1	1
	Connection Point for Gas Water Heater 煤氣熱水爐接線位	1	1	1	-	-	1	1	1	1
	Washing Machine Connection Point (Water Inlet) 洗衣機接駁點 (來水位)	1	1	1	-	-	1	1	1	1
	Washing Machine Connection Point (Water Outlet) 洗衣機接駁點 (去水位)	1	1	1	-	-	1	1	1	1
	Lighting Point 燈位	2	2	2	-	-	2	2	2	2
	Miniature Circuit Breakers Board 總電掣箱	1	-	-	-	-	1	-	-	1
	Towngas Water Heater Remote Controller 煤氣熱水爐溫度控制器	1	1	1	-	-	1	1	1	1
	Door Bell 門鈴	1	1	1	-	-	1	1	1	1

Remarks:

- 4/F, 13/F, 14/F & 24/F are omitted.
- The symbol "-" as shown in the above table denotes "Not applicable".

備註:

- 不設4樓、13樓、14樓及24樓。
- 上表「-」代表不適用。

23 FITTINGS, FINISHES AND APPLIANCES 裝置、裝修物料及設備

Tower 3 - Schedule of Mechanical & Electrical Provisions of Residential Properties 第3座 – 住宅物業機電裝置數量說明表

Floor 樓層		3/F, 5/F - 12/F, 15/F - 23/F & 25/F - 32/F 3樓、5樓至12樓、15樓至23樓及25樓至32樓								
Unit 單位		A	B	C	D	E	F	G	H	J
Open Kitchen 開放式廚房	13A Twin Socket Outlet 13A雙位電插座	-	-	-	2	2	-	-	-	-
	13A Single Socket Outlet 13A單位電插座	-	-	-	3	3	-	-	-	-
	Connection Point for Kitchen Cabinet Lighting 廚房櫃燈接線位	-	-	-	1	1	-	-	-	-
	Connection Point for Cooker Hood 抽油煙機接線位	-	-	-	1	1	-	-	-	-
	Connection Point for Induction Cooker 電煮食爐接線位	-	-	-	1	1	-	-	-	-
	Connection Point for Electric Water Heater 電熱水爐接線位	-	-	-	1	1	-	-	-	-
	Washing Machine Connection Point (Water Inlet) 洗衣機接駁點 (來水位)	-	-	-	1	1	-	-	-	-
	Washing Machine Connection Point (Water Outlet) 洗衣機接駁點 (去水位)	-	-	-	1	1	-	-	-	-
	Lighting Point 燈位	-	-	-	1	1	-	-	-	-
	Miniature Circuit Breakers Board 總電掣箱	-	-	-	1	1	-	-	-	-
Sprinkler Head 消防花灑頭	-	-	-	2	2	-	-	-	-	
Master Bathroom 主人浴室	13A Single Socket Outlet 13A單位電插座	-	1	1	-	-	-	1	1	-
	Lighting Point 燈位	-	2	2	-	-	-	2	2	-
	Towngas Water Heater Remote Controller 煤氣熱水爐溫度控制器	-	1	1	-	-	-	1	1	-
	Connection Point for Exhaust Fan 抽氣扇接線位	-	1	1	-	-	-	1	1	-
	Connection Point for Mirror Cabinet Lighting 鏡櫃燈接線位	-	1	1	-	-	-	1	1	-
Bathroom 浴室	13A Single Socket Outlet 13A單位電插座	1	1	1	1	1	1	1	1	1
	Lighting Point 燈位	2	2	2	2	2	2	2	2	2
	Towngas Water Heater Remote Controller 煤氣熱水爐溫度控制器	1	1	1	-	-	1	1	1	1
	Connection Point for Electric Water Heater 電熱水爐接線位	-	-	-	1	1	-	-	-	-
	Connection Point for Exhaust Fan 抽氣扇接線位	1	1	1	2	2	1	1	1	1
Connection Point for Mirror Cabinet Lighting 鏡櫃燈接線位	1	1	1	1	1	1	1	1	1	
Air Conditioning Platform 空調機平台	Isolator for Outdoor Air-conditioner 室外冷氣機開關掣	3	5	5	2	2	3	5	4	3
Balcony 露台	Lighting Point 燈位	1	1	1	1	1	1	1	1	1
Utility Platform 工作平台	Lighting Point 燈位	1	1	1	1	1	1	1	1	1

Remarks:

- 4/F, 13/F, 14/F & 24/F are omitted.
- The symbol "-" as shown in the above table denotes "Not applicable".

備註:

- 不設4樓、13樓、14樓及24樓。
- 上表「-」代表不適用。

23 FITTINGS, FINISHES AND APPLIANCES 裝置、裝修物料及設備

Tower 5 - Schedule of Mechanical & Electrical Provisions of Residential Properties 第5座 – 住宅物業機電裝置數量說明表

Floor 樓層		3/F, 5/F - 12/F & 15/F - 21/F 3樓、5樓至12樓及15樓至21樓					
Unit 單位		A	B	C	D	E	F
Main Entrance 大門入口	Door Bell Push Button 門鈴按鈕	1	1	1	1	1	1
Living Room / Dining Room / Corridor 客廳/ 飯廳/ 走廊	Master Lighting Switch 燈掣總開關	1	1	1	1	1	1
	TV/FM Outlet 電視及電台接收插座	2	2	2	2	2	2
	Telephone Outlet 電話插座	2	2	2	2	2	2
	13A Twin Socket Outlet 13A雙位電插座	3	3	3	3	3	3
	Connection Point / Switch for Indoor Air-conditioner Unit 室內冷氣機接線位/ 開關	1	1	1	1	1	1
	Switch for Electric Water Heater 電熱水爐開關掣	-	-	2	-	2	-
	Switch for Exhaust Fan 抽氣扇開關掣	2	2	2	2	2	2
	Lighting Switch 燈掣	12	11	7	11	7	11
	Lighting Point 燈位	5	3	3	4	3	4
	Door Bell 門鈴	-	-	1	-	1	-
Bedroom 睡房	Smoke Detector 煙霧感應器	-	-	1	-	1	-
	TV/FM Outlet 電視及電台接收插座	-	-	1	-	1	-
	Telephone Outlet 電話插座	-	-	1	-	1	-
	13A Twin Socket Outlet 13A雙位電插座	-	-	2	-	2	-
	Connection Point / Switch for Indoor Air-conditioner Unit 室內冷氣機接線位/ 開關	-	-	1	-	1	-
	Lighting Switch 燈掣	-	-	4	-	4	-
Bedroom 1 睡房 1	Lighting Point 燈位	-	-	1	-	1	-
	TV/FM Outlet 電視及電台接收插座	1	1	-	1	-	1
	Telephone Outlet 電話插座	1	1	-	1	-	1
	13A Twin Socket Outlet 13A雙位電插座	2	2	-	2	-	2
	Connection Point / Switch for Indoor Air-conditioner Unit 室內冷氣機接線位/ 開關	1	1	-	1	-	1
	Lighting Switch 燈掣	1	1	-	2	-	1
Lighting Point 燈位	1	1	-	1	-	1	

Remarks:

- 4/F, 13/F & 14/F are omitted.
- The symbol "-" as shown in the above table denotes "Not applicable".

備註：

- 不設4樓、13樓及14樓。
- 上表「-」代表不適用。

23 FITTINGS, FINISHES AND APPLIANCES 裝置、裝修物料及設備

Tower 5 - Schedule of Mechanical & Electrical Provisions of Residential Properties 第5座 – 住宅物業機電裝置數量說明表

Floor 樓層		3/F, 5/F - 12/F & 15/F - 21/F 3樓、5樓至12樓及15樓至21樓					
Unit 單位		A	B	C	D	E	F
Bedroom 2 睡房 2	TV/FM Outlet 電視及電台接收插座	1	1	-	1	-	1
	Telephone Outlet 電話插座	1	1	-	1	-	1
	13A Twin Socket Outlet 13A雙位電插座	1	1	-	1	-	1
	Connection Point / Switch for Indoor Air-conditioner Unit 室內冷氣機接線位/ 開關	1	1	-	1	-	1
	Lighting Switch 燈掣	1	1	-	1	-	1
	Lighting Point 燈位	1	1	-	1	-	1
Kitchen 廚房	13A Twin Socket Outlet 13A雙位電插座	2	2	-	2	-	2
	13A Single Socket Outlet 13A單位電插座	3	3	-	3	-	3
	13A Twin Socket Outlet for Gas Burner 13A雙位電插座供煤氣煮食爐	1	1	-	1	-	1
	Connection Point for Exhaust Fan 抽氣扇接線位	1	1	-	1	-	1
	Connection Point for Kitchen Cabinet Lighting 廚房櫃燈接線位	1	1	-	1	-	1
	Connection Point for Cooker Hood 抽油煙機接線位	1	1	-	1	-	1
	Connection Point for Gas Water Heater 煤氣熱水爐接線位	1	1	-	1	-	1
	Washing Machine Connection Point (Water Inlet) 洗衣機接駁點 (來水位)	1	1	-	1	-	1
	Washing Machine Connection Point (Water Outlet) 洗衣機接駁點 (去水位)	1	1	-	1	-	1
	Lighting Switch 燈掣	1	1	-	-	-	1
	Lighting Point 燈位	2	2	-	2	-	2
	Miniature Circuit Breakers Board 總電掣箱	1	1	-	1	-	1
	Towngas Water Heater Remote Controller 煤氣熱水爐溫度控制器	1	1	-	1	-	1
Door Bell 門鈴	1	1	-	1	-	1	

Remarks:

- 4/F, 13/F & 14/F are omitted.
- The symbol "-" as shown in the above table denotes "Not applicable".

備註:

- 不設4樓、13樓及14樓。
- 上表「-」代表不適用。

23 FITTINGS, FINISHES AND APPLIANCES 裝置、裝修物料及設備

Tower 5 - Schedule of Mechanical & Electrical Provisions of Residential Properties 第5座 – 住宅物業機電裝置數量說明表

Floor 樓層		3/F, 5/F - 12/F & 15/F - 21/F 3樓、5樓至12樓及15樓至21樓					
Unit 單位		A	B	C	D	E	F
Open Kitchen 開放式廚房	13A Twin Socket Outlet 13A雙位電插座	-	-	2	-	2	-
	13A Single Socket Outlet 13A單位電插座	-	-	3	-	3	-
	Connection Point for Kitchen Cabinet Lighting 廚房櫃燈接線位	-	-	1	-	1	-
	Connection Point for Cooker Hood 抽油煙機接線位	-	-	1	-	1	-
	Connection Point for Induction Cooker 電煮食爐接線位	-	-	1	-	1	-
	Connection Point for Electric Water Heater 電熱水爐接線位	-	-	1	-	1	-
	Washing Machine Connection Point (Water Inlet) 洗衣機接駁點 (來水位)	-	-	1	-	1	-
	Washing Machine Connection Point (Water Outlet) 洗衣機接駁點 (去水位)	-	-	1	-	1	-
	Lighting Point 燈位	-	-	1	-	1	-
	Miniature Circuit Breakers Board 總電掣箱	-	-	1	-	1	-
	Sprinkler Head 消防花灑頭	-	-	2	-	2	-
Bathroom 浴室	13A Single Socket Outlet 13A單位電插座	1	1	1	1	1	1
	Lighting Point 燈位	2	2	2	2	2	2
	Towngas Water Heater Remote Controller 煤氣熱水爐溫度控制器	1	1	-	1	-	1
	Connection Point for Electric Water Heater 電熱水爐接線位	-	-	1	-	1	-
	Connection Point for Exhaust Fan 抽氣扇接線位	1	1	2	1	2	1
	Connection Point for Mirror Cabinet Lighting 鏡櫃燈接線位	1	1	1	1	1	1
Air Conditioning Platform 空調機平台	Isolator for Outdoor Air-conditioner 室外冷氣機開關掣	3	3	2	3	2	3
Balcony 露台	Lighting Point 燈位	1	1	1	1	1	1
Utility Platform 工作平台	Lighting Point 燈位	1	1	1	1	1	1

Remarks:

- 4/F, 13/F & 14/F are omitted.
- The symbol "-" as shown in the above table denotes "Not applicable".

備註:

- 不設4樓、13樓及14樓。
- 上表「-」代表不適用。

24 SERVICE AGREEMENTS 服務協議

1. Potable and flushing water is supplied by Water Supplies Department.
2. Electricity is supplied by CLP Power Hong Kong Limited.
3. Towngas is supplied by The Hong Kong and China Gas Company Limited.

1. 食水及沖廁水由水務署供應。
2. 電力由中華電力有限公司供應。
3. 煤氣由香港中華煤氣有限公司供應。

25 GOVERNMENT RENT 地稅

The Owner of a specified residential property is liable for the Government rent payable for the specified residential property from the date of the Land Grant up to and including the date of completion of the sale and purchase of the specified residential property (i.e. the date of the assignment of the specified residential property).

指明住宅物業擁有人有法律責任繳付該指明住宅物業由批地文件之日期起計直至及包括該指明住宅物業買賣完成日(即該指明住宅物業轉讓契日期)為止的地稅。

26 MISCELLANEOUS PAYMENTS BY PURCHASER 買方的雜項付款

1. On the delivery of the vacant possession of the specified residential property to the purchaser, the purchaser is liable to reimburse the Owner for the deposits for water, electricity and gas; and
2. On that delivery, the purchaser is not liable to pay the Owner a debris removal fee¹.

Remarks:

¹ Upon that delivery, the purchaser is liable to pay the debris removal fee to the manager (not the Owner) of the Phase under the deed of mutual covenant, and where the Owner has paid that debris removal fee, the purchaser shall reimburse the Owner for the same.

1. 在向買方交付指明住宅物業在空置情況下的管有權時，買方須負責向擁有人補還水、電力及氣體的按金；及
2. 在交付時，買方不須向擁有人支付清理廢料的費用¹。

備註：

¹ 在交付時，買方須根據公契向期數的管理人(而非擁有人)支付清理廢料的費用，如擁有人已支付清理廢料的費用，買方須向擁有人補還清理廢料的費用。

27 DEFECT LIABILITY WARRANTY PERIOD 欠妥之處的保養責任期

The Vendor shall, as soon as reasonably practicable after receipt of a written notice served by the purchaser within 6 months after the date of completion of the sale and purchase, remedy any defects to the property, or the fittings, finishes or appliances incorporated into the property as set out in the agreement for sale and purchase caused otherwise than by the act or neglect of the purchaser.

凡物業或於買賣合約列出裝設於物業內的裝置、裝修物料或設備有欠妥之處，而該欠妥之處並非由買方行為或疏忽造成，則賣方在接獲買方在買賣成交日期後的6個月內送達的書面通知書後，須於合理切實可行的情況下，盡快作出補救。

28 MAINTENANCE OF SLOPES 斜坡維修

Not Applicable.

不適用。

29 MODIFICATION 修訂

There is no on-going application to the Government for a modification of the Land Grant which is not yet granted.

沒有向政府申請中而未獲批准的修訂批地文件。

30 RELEVANT INFORMATION 有關資料

Not Applicable.

不適用。

31 ADDRESS OF THE WEBSITE DESIGNATED BY THE VENDOR FOR THE PHASE 賣方就期數指定的互聯網網站的網址

The address of the website designated by the Vendor for the Phase for the purposes of Part 2 of the Residential Properties (First-hand Sales) Ordinance: www.solcity.com.hk

賣方為施行《一手住宅物業銷售條例》第2部就期數指定的互聯網網站的網址：www.solcity.com.hk

32 INFORMATION IN APPLICATION FOR CONCESSION ON GROSS FLOOR AREA OF BUILDING

申請建築物總樓面面積寬免的資料

Breakdown of GFA Concessions Obtained for All Features

Latest information on breakdown of GFA concessions as shown on the general building plans submitted to and approved by the Building Authority (BA) prior to the printing of the sales brochure is tabulated below. Information marked (#) may be based on information provided by the Authorized Person if the sales brochure is printed prior to submission of the final amendment plans to the BA. The breakdown of GFA concessions may be subject to further changes until final amendment plans are submitted to and approved by the BA prior to the issuance of the occupation permit for the Phase.

		Area (m ²)
Disregarded GFA under Building (Planning) Regulations 23(3)(b)		
1.(#)	Carpark and loading/unloading area (excluding public transport terminus)	3,228.873
2.	Plant rooms and similar services	Not Applicable
2.1(#)	Area of plant rooms and similar services which are limited by respective PNAPs or regulations such as TBE room, refuse storage and material recovery chamber, etc.	123.160
2.2(#)	Area of plant rooms and similar services which are not limited by respective PNAPs or regulations such as transformer room, switch room, Potable and flushing water tank, etc.	3,046.152
2.3(#)	Non-mandatory or non-essential plant room such as a/c plant room, AHU room, etc.	28.076 ^
Disregarded GFA under Building (Planning) Regulations 23A(3)		
3.	Area for picking up and setting down persons departing from or arriving at the hotel by vehicle	Not Applicable
4.	Supporting facilities for a hotel	Not Applicable
Green Features under Joint Practice Notes 1 and 2		
5.(#)	Balcony for residential buildings	720.000 ^^
6.	Wider common corridor and lift lobby	Not Applicable
7.(#)	Communal sky garden	Not Applicable
8.	Communal podium garden for non-residential buildings	Not Applicable
9.(#)	Acoustic fin	46.170
10.	Wing wall, wind catcher and funnel	Not Applicable
11.(#)	Non-structural prefabricated external wall	987.080 €
12.(#)	Utility platform	540.000 §
13.(#)	Noise barrier	Not Applicable
Amenity Features		
14.(#)	Counter, office, store, guard room and lavatory for watchman and management staff, Owner's Corporation Office	92.000 +
15.(#)	Residential recreational facilities including void, plant room, swimming pool filtration plant room, covered walkway etc serving solely the recreational facilities	1,133.534*

		Area (m ²)
16.(#)	Covered landscaped and play area	1,531.031 ®
17.(#)	Horizontal screens/covered walkways, trellis	62.770 ++
18.(#)	Larger lift shaft	520.535 +++
19.	Chimney shaft	Not Applicable
20.(#)	Other non-mandatory or non-essential plant room, such as boiler room, SMATV room	Not Applicable
21.(#)	Pipe duct, air duct for mandatory feature or essential plant room	788.101
22.(#)	Pipe duct, air duct for non-mandatory or non-essential plant room	109.711
23.(#)	Plant room, pipe duct, air duct for environmentally friendly system and feature	116.309
24.	High headroom and void in front of cinema, shopping arcade etc. in non-domestic phase	Not Applicable
25.	Void over main common entrance (prestige entrance) in non-domestic phase	Not Applicable
26.	Void in duplex domestic flat and house	Not Applicable
27.(#)	Sunshade and reflector	Not Applicable
28.(#)	Minor projection such as AC box, window cill, project window	Not Applicable
29.(#)	Other projection such as air-conditioning box and platform with a projection of more than 750mm from the external walls.	Not Applicable
Other Items		
30.(#)	Refuge floor including refuge floor cum sky garden	751.838
31.(#)	Covered area under large projection/overhanging feature	Not Applicable
32.	Public transport terminus (PTT)	Not Applicable
33.(#)	Party structure and common staircase	Not Applicable
34.(#)	Horizontal area of staircase, lift shaft and vertical duct solely serving floor accepted as not being accountable for GFA	Not Applicable
35.	Public passage	Not Applicable
36.(#)	Covered area set back	Not Applicable
Bonus GFA		
37.	Bonus GFA	Not Applicable

Note: The above table is based on the requirements as stipulated in the Practice Notes for Authorized Persons, Registered Structural Engineers and Registered Geotechnical Engineers ADM-2 issued by the Buildings Department. The Buildings Department may revise such requirements from time to time as appropriate.

- * Filtration Plant Room for Water Feature included
- ^ AHU Room Included
- + Caretaker Counter Included
- ® Covered Landscape Area Included
- € Non-structural prefabricated external wall Included
- § Utility Platform Included
- ++ Covered Walkway and Trellis Included
- +++ Larger Lift Shaft Included
- ^^ Balcony for residential buildings Included

32 INFORMATION IN APPLICATION FOR CONCESSION ON GROSS FLOOR AREA OF BUILDING

申請建築物總樓面面積寬免的資料

獲寬免總樓面面積的設施分項

於印製售樓說明書前呈交予並已獲建築事務監督批准的一般建築圖則上有關總樓面面積寬免的分項的最新資料，請見下表。如印製售樓說明書時尚未呈交最終修訂圖則予建築事務監督，則有 (#) 號的資料可以由認可人士提供的資料作為基礎。直至最終修訂圖則於發出佔用許可證前呈交予並獲建築事務監督批准前，以下分項資料仍可能有所修改。

		面積 (平方米)
根據《建築物 (規劃) 規例》第23(3)(b)條不計算的總樓面面積		
1. ^(#)	停車場及上落客貨地方 (公共交通總站除外)	3,228.873
2.	機房及相類設施	不適用
2.1 ^(#)	所佔面積受相關《作業備考》或規例限制的強制性設施或必要機房，例如升降機機房、電訊及廣播設備室、垃圾房等	123.160
2.2 ^(#)	所佔面積不受任何《作業備考》或規例限制的強制性設施或必要機房，例如僅由消防裝置及設備佔用的房間、電錶房、電力變壓房、食水及鹹水缸等	3,046.152
2.3 ^(#)	非強制性或非必要機房，例如空調機房、風櫃房等	28.076 ^
根據《建築物 (規劃) 規例》第23A(3)條不計算的總樓面面積		
3.	供人離開或到達旅館時上落汽車的地方	不適用
4.	旅館的輔助性設施	不適用
根據《聯合作業備考》第1號及第2號提供的環保設施		
5. ^(#)	住宅樓宇露台	720.000 ^^
6.	加闊的公用走廊及升降機大堂	不適用
7. ^(#)	公用空中花園	不適用
8.	非住宅樓宇的公用平台花園	不適用
9. ^(#)	隔聲簾	46.170
10.	翼牆、捕風器及風斗	不適用
11. ^(#)	非結構預製外牆	987.080 €
12. ^(#)	工作平台	540.000 §
13. ^(#)	隔音屏障	不適用
適意設施		
14. ^(#)	供保安人員和管理處員工使用的櫃枱、辦公室、儲物室、警衛室和廁所、業主立案法團辦公室	92.000 +
15. ^(#)	住宅康樂設施，包括僅供康樂設施使用的中空、機房、游泳池的濾水器機房、有蓋人行道等	1,133.534*
16. ^(#)	有上蓋的園景區及遊樂場	1,531.031 @
17. ^(#)	橫向屏障/ 有蓋人行道、花棚	62.770 ++
18. ^(#)	擴大升降機井道	520.535 +++

		面積 (平方米)
19.	煙囪管道	不適用
20. ^(#)	其他非強制性或非必要機房，例如爐房、衛星電視共用天線房	不適用
21. ^(#)	強制性設施或必要機房所需的管槽、氣槽	788.101
22. ^(#)	非強制性設施或非必要機房所需的管槽、氣槽	109.711
23. ^(#)	環保系統及設施所需的機房、管槽及氣槽	116.309
24.	非住用期數中電影院、商場等的較高的淨高及前方中空	不適用
25.	非住用期數的公用主要入口 (尊貴入口) 上方的中空	不適用
26.	複式住宅單位及洋房的中空	不適用
27. ^(#)	遮陽篷及反光罩	不適用
28. ^(#)	小型伸出物，例如空調機箱、窗台、伸出的窗台	不適用
29. ^(#)	其他伸出物，如空調機箱或伸出外牆超過750毫米的平台	不適用
其他項目		
30. ^(#)	庇護層，包括庇護層兼空中花園	751.838
31. ^(#)	大型伸出/ 外懸設施下的有蓋面積	不適用
32.	公共交通總站	不適用
33. ^(#)	共用構築物及樓梯	不適用
34. ^(#)	僅供獲接納不計入總樓面面積的樓層使用的樓梯、升降機槽及垂直管道的水平面積	不適用
35.	公眾通道	不適用
36. ^(#)	因樓宇後移導致的覆蓋面積	不適用
額外總樓面面積		
37.	額外總樓面面積	不適用

註：上述表格是根據屋宇署所發出的《認可人士，註冊結構工程師及註冊岩土工程師作業備考》ADM-2規定的要求而制訂的。屋宇署會按實際需要不時更改有關要求。

* 包括水景裝飾的濾水器機房

^ 包括風櫃房

+ 包括保安人員和管理處員工使用的櫃枱

@ 包括有上蓋的園景區

€ 包括非結構預製外牆

§ 包括工作平台

++ 包括有蓋人行道、花棚

+++ 包括擴大升降機井道

^^ 包括住宅樓宇露台

32 INFORMATION IN APPLICATION FOR CONCESSION ON GROSS FLOOR AREA OF BUILDING 申請建築物總樓面面積寬免的資料

Environmental Assessment of the Building



建築物的環境評估



Estimated Energy Performance or Consumption for the common parts of the Phase

Latest information on the estimated energy performance or consumption for the common parts of the Phase as submitted to the Building Authority prior to printing of the sales brochures:

期數的公用部分的預計能量表現或消耗

於印製售樓說明書前呈交予建築事務監督期數的公用部份的預計能量表現或消耗的最近期資料：

Part I 第 I 部分	
Provision of Central Air Conditioning 提供中央空調	YES 是
Provision of Energy Efficient Features 提供具能源效益的設施	YES 是
Energy Efficient Features Proposed 擬安裝的具能源效益的設施	1. Use of Electrical Appliances with Energy Label under EMSD's Mandatory Energy Efficiency Labeling Scheme 使用具有強制性能源效益標籤計劃的標籤的電器
	2. Use of Energy Saving Light Fittings for Communal Area 於公共空間使用節能照明配件
	3. Regenerative Lifts with Power Regeneration Function to be used 使用具電力再生功能的升降機

32 INFORMATION IN APPLICATION FOR CONCESSION ON GROSS FLOOR AREA OF BUILDING

申請建築物總樓面面積寬免的資料

Part II: The predicted annual energy use of the proposed building / part of building (Note 1) 第 II 部分：擬興建樓宇/ 部分樓宇預計每年能源消耗量 (註腳 1)					
Location 位置	Internal Floor Area Served (m ²) 使用有關裝置的內部樓面面積 (平方米)	Annual Energy Use of Baseline Building (Note 2) (/m ² /annum) 基線樓宇 (註腳 2) 每年能源消耗量 (/ 平方米/ 年)		Annual Energy Use of Proposed Building (/m ² /annum) 擬興建樓宇每年能源消耗量 (/ 平方米/ 年)	
		Electricity kWh 電力 千瓦小時	Town Gas / LPG unit 煤氣/ 石油氣 用量單位	Electricity kWh 電力 千瓦小時	Town Gas / LPG unit 煤氣/ 石油氣 用量單位
Area Served by Central Building Services Installation (Note 3) 有使用中央屋宇設備裝置 (註腳 3) 的部分	17171.394	290.86	N/A 不適用	215.69	N/A 不適用

Part III : The following installations are designed in accordance with the relevant Codes of Practices published by the Electrical & Mechanical Services Department (EMSD): - 第 III 部分：按機電工程署公布的相關實務守則設計/ 完成的裝置			
Type of Installations 裝置類型	YES 是	NO 否	N/A 不適用
Lighting Installations 照明裝置	✓		
Air Conditioning Installations 空調裝置	✓		
Electrical Installations 電力裝置	✓		
Lift & Escalator Installations 升降機及自動梯的裝置	✓		
Performance-based Approach 以總能源為本的方法			✓

Notes:

- In general, the lower the estimated "Annual Energy Use" of the building, the more efficient of the building in terms of energy use. For example, if the estimated "annual energy use of proposed building" is less than the estimated "annual energy use of baseline building", it means the predicted use of energy is more efficient in the proposed building than in the baseline building. The larger the reduction, the greater the efficiency.

The predicted annual energy use, in terms of electricity consumption (kWh/m²/annum) and town gas/LPG consumption (unit/m²/annum) of the Phase by the internal floor area served, where:
(a) "total annual energy use" has the same meaning of "annual energy use" under Section 4 and Appendix 8 of the BEAM Plus for New Buildings (current version); and
(b) "internal floor area", in relation to a building, a space or a unit means the floor area of all enclosed space measured to the internal faces of enclosing external and/or party walls.
- "Baseline Building" has the same meaning as "Baseline Building Model (zero-credit benchmark)" under Section 4 and Appendix 8 of the BEAM Plus for New Building (current version).
- "Central Building Services Installation" has the same meaning as that in the Code of Practice for Energy Efficiency of Building Services Installations in buildings. (February 2010 edition) (Draft)

註腳：

- 一般而言，一棟樓宇的預計“每年能源消耗量”愈低，其節約能源的效益愈高。如一棟樓宇預計的“每年能源消耗量”低於該樓宇的“基線樓宇每年能源消耗量”，則代表預計該樓宇的能源應用較其基線樓宇有效，削減幅度愈大則代表有關樓宇能源節約的效益愈高。預計每年能源消耗量 [以耗電量 (千瓦小時/平方米/年) 及煤氣/石油氣消耗量 (用量單位/平方米/年) 計算]，指將發展項目的每年能源消耗總量除以使用有關裝置的內部樓面面積所得出的商，其中：-
(a) “每年能源消耗量”與新建樓宇 BEAM Plus 標準 (現行版本) 第 4 節及附錄 8 中的「年能源消耗」具有相同涵義；及
(b) 樓宇、空間或單位的“內部樓面面積”，指外牆及/或共用牆的內壁之內表面起量度出來的樓面面積。
- “基準樓宇”與新建樓宇 BEAM Plus 標準 (現行版本) 第 4 節及附錄 8 中的“基準建築物模式 (零分標準)”具有相同涵義。
- “中央屋宇裝備裝置”與樓宇的屋宇裝備裝置能源效益實務守則 (2010 年 2 月版) (草稿) 中的涵義相同。

33

INFORMATION REQUIRED BY THE DIRECTOR OF LANDS TO BE SET OUT IN SALES BROCHURE AS A CONDITION FOR GIVING THE PRESALE CONSENT 地政總署署長作為給予預售樓花同意書的條件而規定列於售樓說明書的資料

1. The purchaser is required to agree with **Long Ping South Property Development Limited** (“the Vendor”) in the agreement for sale and purchase to the effect that other than entering into a mortgage or charge, the purchaser will not nominate any person to take up the Assignment of the Residential Unit or the Parking Space specified in the agreement for sale and purchase, sub-sell that Residential Unit or Parking Space or transfer the benefit of the agreement for sale and purchase of that Residential Unit or Parking Space in any manner whatsoever or enter into any agreement so to do before completion of the sale and purchase and execution of the Assignment.
2. If the Vendor, at the request of the purchaser under an agreement for sale and purchase, agrees (at its own discretion) to cancel the agreement for sale and purchase or the obligations of the purchaser under the agreement for sale and purchase, the Vendor is entitled to retain the sum of five percent (5%) of the total purchase price of the Residential Unit and the Parking Space specified in the agreement for sale and purchase and the purchaser will in addition pay or reimburse (as the case may be) to the Vendor all legal costs, charges and disbursements (including any stamp duty) in connection with the cancellation of the agreement for sale and purchase.
3. The Vendor will pay or has paid (as the case may be) all outstanding Government rent in respect of the land on which the Development is in the course of being erected, from the date of the Land Grant up to and including the date of the respective Assignments to the purchasers.
4. The purchaser who has signed an agreement for sale and purchase has the right of access to and will, upon his request, be provided with a hard copy of an updated record of information as to the total construction costs and the total professional fees to complete the Phase as well as the total construction costs and the total professional fees expended and paid as at the end of the calendar month preceding the month at which the request is made subject to payment of a nominal fee of not more than HK\$100 per request.
5. (i) Under Special Condition No.(13)(e) of the Land Grant, the total number of residential units erected or to be erected on the lot shall not be less than 720 and out of that total number of residential units, not less than 428 residential units shall be in the size of not exceeding 50 square metres in saleable area each.
(ii) The form of the Deed of Mutual Covenant and Management Agreement approved by the Director of Lands (“the Director”) contains the following provisions :
Clause 7(a) of the Third Schedule:
“No Owner shall carry out or permit or suffer to be carried out any works in connection with any Residential Unit, including but not limited to demolition or alteration of any partition wall or any floor or roof slab or any partition structure, which will result in a Residential Unit being internally linked to and accessible from any adjoining or adjacent Residential Unit, except with the prior written consent of the Director or any other Government authority in place of him from time to time, which consent may be given or withheld at his absolute discretion and if given, may be subject to such terms and conditions (including payment of fees) as may be imposed by him at his absolute discretion.”
Clause 7(b) of the Third Schedule:
“The Manager shall deposit in the management office of the Development the record provided by the Director or any other Government authority in place of him from time to time of the information relating to the consent given under the provision in this Deed referred to in sub-clause (a) above for inspection by all Owners free of costs and for taking copies at their own expense and on payment of a reasonable charge, all charges received to be credited to the residential common account of the Special Fund.”
- (iii) The number of residential units provided in the Phase is 720.
- (iv) The number of residential units provided in the Phase in the size of not exceeding 50 square metres in saleable area is 470. The total number of residential units provided in the Phase in the size of exceeding 50 square metres in saleable area is 250.
6. For information relating to the Green Areas, the Structures and the other structures and facilities (as respectively referred to in Special Condition Nos.(4)(a)(i)(I), (4)(a)(i)(II) and (4)(a)(iii) of the Land Grant), the Green Stippled Black Areas, the Pedestrian Structures and the other structures and facilities (as respectively referred to in Special Condition Nos.(4)(b)(i)(I), (4)(b)(i)(II) and (4)(b)(iii) of the Land Grant), the Government Accommodation (as referred to in Special Condition No.(16)(a)(iii) of the Land Grant), the Pedestrian Link (as referred to in Special Condition No.(34)(a) of the Land Grant), the Covered Footbridge (as referred to in Special Condition No.(35)(a) of the Land Grant), the Drainage Reserve (as referred to in Special Condition No.(56)(a) of the Land Grant), the Existing Stormwater Drains and the Stormwater Drains Reserve Areas (as referred to in Special Condition No.(57)(a) of the Land Grant), and the Existing Water Mains, the Existing Waterworks Installations and the Waterworks Reserve Areas (as respectively referred to in Special Condition Nos.(58)(a) and (58)(c) of the Land Grant), please refer to the sections "Summary of Land Grant" and "Information on Public Facilities and Public Open Spaces" of this sales brochure.

33 INFORMATION REQUIRED BY THE DIRECTOR OF LANDS TO BE SET OUT IN SALES BROCHURE AS A CONDITION FOR GIVING THE PRESALE CONSENT

地政總署署長作為給予預售樓花同意書的條件而規定列於售樓說明書的資料

1. 買方須於買賣合約中與**朗屏南物業發展有限公司**（“賣方”）約定，除訂立按揭或押記外，在買賣完成及簽署轉讓契前，買方不得提名任何人士接受買賣合約指明之住宅單位或停車位之轉讓、轉售該住宅單位或停車位或以任何形式轉讓該住宅單位或停車位之買賣合約之權益、或訂立任何有關上述提名、轉售或轉讓權益之協議。
2. 若賣方應買賣合約下買方要求同意（同意與否賣方有酌情權決定）取消買賣合約或買賣合約下買方之責任，賣方有權保留等同買賣合約指明之住宅單位及停車位總售價5%之金額，另買方須向賣方繳付或償還（視屬何情況而定）所有與取消買賣合約有關之法律費用、收費及開銷（包括任何印花稅）。
3. 賣方將會或已經（視屬何情況而定）支付所有有關發展項目在其上興建之土地於批地文件日期起計至相關買家轉讓契日期（包括該兩日）期間之未付地稅。
4. 已簽署買賣合約之買方有權查閱，亦可要求取得有關完成興建期數所需的總建築費及總專業服務費與及截至提出該要求之前一個曆月底為止已花費及支付的總建築費及總專業服務費之最新資料副本一份，惟買方須就每項上述獲得副本之要求繳付不超過港幣一百元之象徵式費用。
5. (i) 根據批地文件批地特別條款第13(e)條，地段的住宅單位總數不得少於720個，而於該總數中，實用面積不超過50平方米的住宅單位不得少於428個。
(ii) 獲地政總署署長（「署長」）批准的公契及管理協議規定如下：-
附錄三第7(a)條
「業主」不得進行或允許或容許進行任何與任何「住宅單位」有關而會導致一個「住宅單位」與毗連或鄰近「住宅單位」內部相通及可從毗連或鄰近「住宅單位」進出的工程（包括但不限於任何分隔牆、任何地板或天花板或任何間隔構築物的拆除或改動），除非獲署長或不時取而代之的任何其他政府機關事先書面同意（該同意書可按其絕對酌情權發出或拒絕，且該同意如獲發出可能受限於按其絕對酌情權施加的條款及條件（包括繳付費用）。」
附錄三第7(b)條
「管理人須在發展項目管理處備存一份由署長或不時取而代之的任何其他政府機關所提供關於上述第(a)分條之下給予的同意的資料紀錄，以供所有「業主」免費查閱及在「業主」自費及支付合理的費用後取得該紀錄副本，收取的一切費用須撥入「特別基金」的住宅公用帳項。」
(iii) 期數提供的住宅單位總數為720個。
(iv) 期數提供的實用面積不超過50平方米的住宅單位數目為470個。期數提供的實用面積超過50平方米的住宅單位數目為250個。
6. 有關以下的資料：批地文件特別條款第(4)(a)(i)(I)條，第(4)(a)(i)(II)條及第(4)(a)(iii)條分別提及的「綠色範圍」，「構築物」及其他構築物和設施；批地文件特別條款第(4)(b)(i)(I)條，第(4)(b)(i)(II)條及第(4)(b)(iii)條分別提及的「綠色加黑點範圍」，「行人構築物」及其他構築物和設施；批地文件特別條款第(16)(a)(iii)條提及的「政府樓宇」；批地文件特別條款第(34)(a)條提及的「行人連廊」；批地文件特別條款第(35)(a)條提及的「有蓋行人天橋」；批地文件特別條款第(56)(a)條提及的「排水保留區」；批地文件特別條款第(57)(a)條提及的「現有雨水排水渠」及「雨水排水渠保留區」；批地文件特別條款第(58)(a)條及第(58)(c)條分別提及的「現有總水喉」，「現有水務裝置」及「水務保留區」：請參閱本售樓說明書中「批地文件的摘要」部分及「公共設施及公眾休憩用地的資料」部分。

34 DATE OF PRINTING OF SALES BROCHURE 本售樓說明書印製日期

Date of printing of this Sales Brochure: 10th October 2018

本售樓說明書印製日期：2018年10月10日

35 POSSIBLE FUTURE CHANGES 日後可能出現的改變

There may be future changes to the Phase and the surrounding areas.

期數及其周邊地區日後可能出現改變。

36 EXAMINATION RECORD 檢視記錄

