

## 22. 裝置、裝修物料及設備 FITTINGS, FINISHES AND APPLIANCES

### 1. 外部裝修物料

		描述		
(a)	外牆	裝修物料的類型	基座平台	主要為石料蓋層、瓷磚、鋁板覆蓋層及玻璃牆
			住宅大樓	主要為瓷磚、鋁板覆蓋層、外牆油漆及玻璃幕牆
(b)	窗	框的用料	氟化碳噴塗鋁質窗框	
		玻璃的用料	灰色玻璃及磨砂玻璃 (如適用)	
(c)	窗台	窗台的用料	不適用	
		窗台板的裝修物料	不適用	
(d)	花槽	裝修物料的類型	不適用	
(e)	陽台或露台	裝修物料的類型	露台：裝有鋁質框鑲夾層強化玻璃欄杆及鋁質頂欄	
			地台：瓷磚	
			牆身：瓷磚	
			天花：鋁質格柵	
		是否有蓋	露台設有上蓋	
		陽台	不適用	
(f)	乾衣設施	類型	不適用	
		用料	不適用	

## 22. 裝置、裝修物料及設備 FITTINGS, FINISHES AND APPLIANCES

### 2. 室內裝修物料

			牆壁	地板	天花板
(a)	大堂	地下住宅入口大堂裝修物料的類型 (第3座及第5座高層地下)	特色玻璃，膠板飾面，不銹鋼飾面，牆紙及瓷磚鋪至外露牆身	外露地台鋪砌天然石	石膏板假天花及髹乳膠漆
		住宅入口大堂裝修物料的類型 (第3座地下)	膠板飾面及瓷磚鋪至外露牆身	外露地台鋪砌瓷磚	石膏板假天花及髹乳膠漆
		公用住宅升降機大堂裝修物料的類型	特色玻璃，膠板飾面，不銹鋼飾面及瓷磚鋪至外露牆身	外露地台鋪砌瓷磚	石膏板假天花及髹乳膠漆
			牆壁	天花板	
(b)	內牆及天花板	客廳裝修物料的類型	乳膠漆		乳膠漆
		飯廳裝修物料的類型			
		睡房裝修物料的類型			
			地板	牆腳線	
(c)	內部地板	客廳裝修物料的類型	(a) 瓷磚 (第3座地下單位16及19，高層地下單位01、16及19，1樓單位01、16及19，2-18樓單位01、02、16及19，19樓單位01、02、10及11，第5座19樓單位01除外) (b) 複合木地板 (只適用於第3座地下單位16及19，高層地下單位01、16及19，1樓單位01、16及19，2-18樓單位01、02、16及19，19樓單位01、02、10及11，第5座19樓單位01)	木腳線	
		飯廳裝修物料的類型			
		睡房裝修物料的類型			
			牆壁	地板	天花板
(d)	浴室	裝修物料的類型	(a) 外露牆身鋪砌瓷磚 (第3座19樓單位10及11，第5座單位01除外) (b) 外露牆身鋪砌天然石 (只適用於第3座19樓單位10及11，第5座19樓單位01)	(a) 外露地台鋪砌瓷磚 (第3座19樓單位10及11，第5座單位01除外) (b) 外露地台鋪砌天然石 (只適用於第3座19樓單位10及11，第5座19樓單位01)	石膏板假天花髹乳膠漆
		牆壁的裝修物料是否鋪至天花板	牆壁裝修物料鋪至假天花底		

備註：不設4樓、13樓及14樓。

## 22. 裝置、裝修物料及設備 FITTINGS, FINISHES AND APPLIANCES

### 2. 室內裝修物料

			牆壁	地板	天花板	灶台
(e)	廚房	裝修物料的类型	(a) 外露牆身鋪砌瓷磚 (第3座19樓單位10及11, 第5座19樓單位01除外) (b) 外露牆身鋪砌天然石 (只適用於第3座19樓單位10及11, 第5座19樓單位01)	(a) 外露地台鋪砌瓷磚 (第3座19樓單位10及11, 第5座19樓單位01除外) (b) 外露地台鋪砌天然石 (只適用於第3座19樓單位10及11, 第5座19樓單位01)	石膏板假天花髹乳膠漆	人造石
		牆壁的裝修物料是否鋪至天花板	裝修物料鋪至假天花底			

### 3. 室內裝置

			用料	裝修物料	配件
(a)	門	單位大門	實芯防火木掩門	木皮飾面	電子門鎖、防盜眼、門鼓及門擋
		露台/ 私人花園門 (如適用)	氟化碳鋁質框折疊門、氟化碳鋁質框掩門	灰色玻璃	拉手連門鎖 (如適用)
		工作平台	不適用	不適用	不適用
		私人平台門 (如適用)	氟化碳噴塗鋁質框趟門、氟化碳噴塗鋁質框掩門	灰色玻璃	拉手連門鎖 (如適用)
		睡房門	中空木掩門或中空木趟門	木皮飾面	門鎖及門擋 (趟門除外)
		浴室門	中空木趟門連百葉或中空木掩門連百葉 (如適用)	木皮飾面及木百葉 (如適用)	門鎖及門擋 (趟門除外)
		廚房門	實芯防火木掩門配玻璃視窗	防火玻璃及木皮飾面	門鼓及門擋
		工作間/ 儲物室/ 衣帽間門	中空木掩門	木皮飾面	門鎖及門擋
	私人天台閘	金屬閘	鋁質飾面	門鎖	

## 22. 裝置、裝修物料及設備 FITTINGS, FINISHES AND APPLIANCES

### 3. 室內裝置

			裝置及設備	類型	用料	
(b)	浴室	(i) 裝置及設備的類型及用料	櫃	櫃檯面	人造石	
				洗手盆櫃	木製、膠板飾面及鋼	
				鏡櫃	木製、膠板飾面、鏡及鋼	
				吊架	不銹鋼及木飾面（只適用於第3座地下單位03、05、06、07、08、09及21，高層地下、1樓至19樓單位03、05、06、07、08、09、21、26及27，第5座高層地下單位06，1樓單位06及07，2樓至19樓單位05、06及07）	
			潔具	坐廁	搪瓷	
				洗手盆	人造石	
		洗手盆水龍頭		(a) 鍍鉻（第3座19樓單位10及11，第5座19樓單位01除外） (b) 拉絲古銅（只適用於第3座19樓單位10及11，第5座19樓單位01）		
		廁紙架				
		掛勾				
		淋浴間	強化玻璃			
		浴室設備	隨樓附送之設備及品牌，請參閱「設備說明表」			
		(ii) 供水系統的類型及用料	冷水喉	銅喉		
			熱水喉	配有隔熱絕緣保護之銅喉		
		(iii) 沐浴設施（包括花灑或浴缸，如適用的話）	花灑	(a) 花灑龍頭 (b) 淋雨式花灑（只適用於第3座19樓單位10及11，第5座19樓單位01）	(a) i) 鍍鉻（第3座19樓單位10及11，第5座19樓單位01除外） ii) 拉絲古銅（只適用於第3座19樓單位10及11，第5座19樓單位01） (b) i) 拉絲古銅（只適用於第3座19樓單位10及11，第5座19樓單位01）	
浴缸	浴缸及浴缸龍頭（只適用於第3座高層地下，1樓至19樓單位01，第3座19樓單位10及11）		浴缸龍頭 i) 鍍鉻（只適用於第3座高層地下，1樓至19樓單位01） ii) 拉絲古銅（只適用於第3座19樓單位10及11） 浴缸 瑤瑯瓷釉鈦鋼			
(iv) 浴缸大小（如適用的話）	1500 毫米長 × 700 毫米闊 × 420 毫米深					

備註：不設4樓、13樓及14樓。

## 22. 裝置、裝修物料及設備 FITTINGS, FINISHES AND APPLIANCES

### 3. 室內裝置

		用料			
(c)	廚房	(i) 洗滌盆	(a) 不銹鋼 (第3座19樓單位10及11, 第5座19樓單位01除外) (b) 人造石 (只適用於第3座19樓單位10及11, 第5座19樓單位01)		
		(ii) 供水系統	冷水喉採用銅喉及熱水喉採用配有隔熱絕緣保護之銅喉		
			用料	裝修物料	
		(iii) 廚櫃	木製套裝組合廚櫃配檯面	木皮飾面, 高亮光漆及人造石	
		(iv) 所有其他裝置及設備的類型	消防裝置及設備	開放式廚房內或附近的天花裝置煙霧探測器及消防花灑頭 (適用於所有開放式廚房單位)	
其他裝置	鍍鉻洗滌盆水龍頭				
其他設備	隨樓附送之設備及品牌, 請參閱「設備說明表」				
		裝置	類型	用料	
(d)	睡房	裝置 (包括嵌入式衣櫃) 的類型及用料	嵌入式衣櫃	不適用	不適用
			其他裝置	不適用	不適用
(e)	電話	接駁點的位置及數目	請參閱「機電裝置位置及數量說明表」		
(f)	天線	接駁點的位置及數目	請參閱「機電裝置位置及數量說明表」		

## 22. 裝置、裝修物料及設備 FITTINGS, FINISHES AND APPLIANCES

### 3. 室內裝置

			裝置	類型	用料	
(g)	電力裝置	(i) 供電附件 (包括安全裝置)	供電附件	提供電掣及電插座之面板		
			安全裝置	a. 單相電力並裝妥微型斷路器配電箱：		
				座數	樓層	單位
				3	地下	03、05至11、15至16及19至21
					高層地下至1樓	01、03、05至11、15至16、19、21及25至27
					2樓至3樓及5樓至8樓	01至03、05至11、15至16、19、21及26至27
					9樓至12樓及15樓至18樓	01至03、05至11、15至16、19及21
					19樓	01至03、05至09、21及26至27
				5	高層地下	01、06至12及15至16
					1樓	01、06至12及15至16
					2樓至3樓、5樓至12樓及15樓至18樓	01、03、05至12及15至16
					19樓	05至12及15至16

備註：不設4樓、13樓及14樓。

## 22. 裝置、裝修物料及設備 FITTINGS, FINISHES AND APPLIANCES

### 3. 室內裝置

			裝置	類型	用料	
(g)	電力裝置	(i) 供電附件 (包括安全裝置)	安全裝置	b. 三相電力並裝妥微型斷路器配電箱：		
				座數	樓層	單位
				3	地下	12及17至18
					高層地下至1樓	12、17至18、20、23及25
					2樓至3樓及5樓至8樓	12、17至18、20、22、23及25
					9樓至12樓及15樓至18樓	12、17至18、20、22、23及25
					19樓	10至11、22至23及25
				5	高層地下	02
					1樓	02
		2樓至3樓、5樓至12樓及15樓至18樓	02			
		19樓	01			
		(ii) 導管是隱藏或外露	導管是部分隱藏及部份外露 <sup>1</sup>			
(iii) 電插座及空調機接駁點的位置及數目	請參閱「機電裝置位置及數量說明表」					

備註：不設4樓、13樓及14樓。

## 22. 裝置、裝修物料及設備 FITTINGS, FINISHES AND APPLIANCES

### 3. 室內裝置

			裝置
(h)	氣體供應	類型	煤氣
		系統	設有煤氣喉接駁煤氣煮食爐及煤氣熱水爐
		位置	請參閱「機電裝置位置及數量說明表」
(i)	洗衣機接駁點	位置	請參閱「機電裝置位置及數量說明表」
		設計	設有洗衣機來及去水接駁喉位
(j)	供水	水管的用料	冷水喉採用銅喉及熱水喉採用配有隔熱絕緣保護之銅喉
		水管是隱藏或外露	水管是部分隱藏及部分外露 <sup>2</sup>
		有否熱水供應	廚房和浴室供應熱水

備註：

- 除部分隱藏於混凝土內之導管外，其他部分的導管均為外露。外露的導管可能被假天花、假陣、貯存櫃、覆面、非混凝土間牆、指定之槽位或其他物料遮蓋或隱藏。
- 除部分隱藏於混凝土內之水管外，其他部分的水管均為外露。外露的水管可能被假天花、假陣、貯存櫃、覆面、非混凝土間牆、指定之槽位或其他物料遮蓋或隱藏。



## 22. 裝置、裝修物料及設備 FITTINGS, FINISHES AND APPLIANCES

### 4. 雜項

				住宅大樓		
(a)	升降機	(i) 品牌名稱及產品型號	品牌名稱	東芝		
			產品型號	ELCOSMO-III		
				平台		
			品牌名稱	東芝		
		產品型號	SPACEL-III			
		(ii) 升降機的數目及到達的樓層	升降機的數目	<b>第1期</b> 住宅大樓：6 平台：5		
		到達的樓層	<b>第1期</b>  第3座 第5座 平台	<b>升降機號碼</b>  T3-L1、L2 及 L3 T5-L1、L2 及 L3 P-L1 P-L2 P-L3 P-L4 P-L5	<b>到達的樓層</b>  地庫至19樓 (不設4樓、13樓及14樓) 地庫、高層地下至19樓 (不設4樓、13樓及14樓) 地庫、高層地下及1樓 地庫、高層地下、夾層1樓、1樓及夾層2樓 平台1樓、平台2樓及平台5樓 平台1樓及平台3樓 地庫、地下及高層地下	
(b)	信箱	用料	不銹鋼			
(c)	垃圾收集	(i) 垃圾收集的方法	由清潔工人收集垃圾			
		(ii) 垃圾房的位置	垃圾及物料回收室位於每層住宅樓層之公用地方。中央垃圾及物料回收房設於第1座地下。			

賣方承諾如期數中沒有安裝指明的品牌名稱或產品型號的升降機或設備，便會安裝品質相若的升降機或設備。

## 22. 裝置、裝修物料及設備 FITTINGS, FINISHES AND APPLIANCES

### 4. 雜項

			水錶	電錶	氣體錶		
(d)	水錶、電錶及氣體錶	(i) 位置	第3及5座： 每層之公用水錶房/ 水錶櫃	第3及5座： 每層之公用電錶房/ 電錶櫃	<b>a. 廚房</b>		
					<b>座數</b>	<b>樓層</b>	<b>單位</b>
					3	地下	16及19
						高層地下至1樓	01、16及19
						2樓至3樓、5樓至12樓及15樓至18樓	01至02、16及19
						19樓	01至02及10至11
					5	19樓	01
					<b>b. 露台</b>		
					<b>座數</b>	<b>樓層</b>	<b>單位</b>
					3	高層地下至1樓	03、05至12、15、17至18、20至21、23及25至27
						3樓、5樓至12樓及15樓至18樓	03、05至12、15、17至18、20至23及25至27
						19樓	03、05至09、21至23及25至27
					5	1樓	01至02、06至12及15至16
						2樓至3樓、5樓至12樓及15樓至18樓	01至03、05至12及15至16
		19樓	05至12及15至16				
		<b>c. 私人花園</b>					
		<b>座數</b>	<b>樓層</b>	<b>單位</b>			
3	地下	03、05至12、15、17至18及20至21					
5	高層地下	01至02、06至12及15至16					
	(ii) 就住宅單位而言是獨立抑或公用的錶	獨立	獨立	獨立			

備註：不設4樓、13樓及14樓。

## 22. 裝置、裝修物料及設備 FITTINGS, FINISHES AND APPLIANCES

### 5. 保安設施

保安系統及設備	入口通道控制及保安系統	住宅入口大堂設有訪客對講機系統及智能（八達通）讀卡機。各住宅單位內設有對講機。
	閉路電視	住宅入口大堂、住客會所、所有升降機、天台層及通道巷均設有閉路電視系統，直接連接大堂管理處。
嵌入式的裝備的細節	各住宅單位均設有對講機配有警報掣功能連接住宅入口大堂管理處	
嵌入式裝備的位置	請參閱「機電裝置位置及數量說明表」	

### 6. 設備

品牌名稱及產品型號	「請參閱設備說明表」

賣方承諾如期數中沒有安裝指明的品牌名稱或產品型號的升降機或設備，便會安裝品質相若的升降機或設備。

## 22. 裝置、裝修物料及設備 FITTINGS, FINISHES AND APPLIANCES

### 1. EXTERIOR FINISHES

		Description		
(a)	External wall	Type of finishes	Podium	Mainly finished with stone cladding, ceramic tiles, aluminium cladding and glass wall
			Residential tower	Mainly finished with ceramic tiles, aluminium cladding, external paint and curtain wall
(b)	Window	Material of Frame	Fluorocarbon coated aluminium frame	
		Material of Glass	Grey tinted glass, grey tinted frosted glass (if applicable)	
(c)	Bay window	Material of Bay Window	Not applicable	
		Finishes of window sill	Not applicable	
(d)	Planter	Type of finishes	Not applicable	
(e)	Verandah or balcony	Type of finishes	Balcony : Installed with aluminium framed laminated glass balustrade with aluminium top rail	
			Floor : Ceramic tiles	
			Wall : Ceramic tiles	
			Ceiling : Aluminium grille ceiling	
		Whether it is covered	Balcony is covered	
		Verandah	Not applicable	
(f)	Drying facilities for clothing	Type	Not applicable	
		Material	Not applicable	

## 22. 裝置、裝修物料及設備 FITTINGS, FINISHES AND APPLIANCES

### 2. INTERIOR FINISHES

			Wall	Floor	Ceiling
(a)	Lobby	Residential entrance lobby finishes (UG/F of Tower 3 & 5)	Feature glass, plastic laminate panels, porcelain tiles, stainless steel panels and wall paper to exposed surface	Natural stone to exposed surface	Gypsum board false ceiling with emulsion paint
		Residential entrance lobby finishes (G/F of Tower 3)	Plastic laminate panels and porcelain tiles to exposed surface	Porcelain tiles to exposed surface	Gypsum board false ceiling with emulsion paint
		Common residential lift lobby finishes	Feature glass, plastic laminate panels, porcelain tiles, and stainless steel panels to exposed surface	Porcelain tiles to exposed surface	Gypsum board false ceiling with emulsion paint
			Wall	Ceiling	
(b)	Internal wall and ceiling	Living room finishes	Emulsion paint	Emulsion paint	
		Dining room finishes			
		Bedroom finishes			
			Floor	Skirting	
(c)	Internal floor	Material of Living room	(a) Ceramic tile to exposed surface (except Flats 16 & 19 on G/F, Flats 01, 16 & 19 on UG/F, Flats 01, 16 & 19 on 1/F, Flats 01, 02, 16 & 19 on 2-18/F, Flats 01, 02, 10 & 11 on 19/F of Tower 3, Flat 01 on 19/F of Tower 5.) (b) Engineered timber flooring (for Flats 16 & 19 on G/F, Flats 01, 16 & 19 on UG/F, Flats 01, 16 & 19 on 1/F, Flats 01, 02, 16 & 19 on 2-18/F, Flats 01, 02, 10 & 11 on 19/F of Tower 3, Flat 01 on 19/F of Tower 5)	Timber skirting	
		Material of Dining room			
		Material of Bedroom			
			Wall	Floor	Ceiling
(d)	Bathroom	Type of finishes	(a) Ceramic tile to exposed surface (except Flats 10 & 11 on 19/F of Tower 3 and Flat 01 on 19/F of Tower 5) (b) Natural stone to exposed surface (for Flats 10 & 11 on 19/F of Tower 3 and Flat 01 on 19/F of Tower 5)	(a) Ceramic tile to exposed surface (except Flats 10 & 11 on 19/F of Tower 3 and Flat 01 on 19/F of Tower 5) (b) Natural stone to exposed surface (for Flats 10 & 11 on 19/F of Tower 3 and Flat 01 on 19/F of Tower 5)	Gypsum board false ceiling with emulsion paint
		Whether the wall finishes run up to ceiling	Wall finishes up to level of false ceiling		

Note : 4/F, 13/F and 14/F are omitted.

## 22. 裝置、裝修物料及設備 FITTINGS, FINISHES AND APPLIANCES

### 2. INTERIOR FINISHES

			Wall	Floor	Ceiling	Cooking Bench
(e)	Kitchen	Type of finishes	(a) Ceramic tile to exposed surface (except Flats 10 on 11 on 19/F of Tower 3 and Flat 01 on 19/F of Tower 5) (b) Natural stone to exposed surface (for Flats 10 & 11 on 19/F of Tower 3 and Flat 01 on 19/F of Tower 5)	(a) Ceramic tile to exposed surface (except Flats 10 on 11 on 19/F of Tower 3 and Flat 01 on 19/F of Tower 5) (b) Natural stone to exposed surface (for Flats 10 & 11 on 19/F of Tower 3 and Flat 01 on 19/F of Tower 5)	Gypsum board false ceiling with emulsion paint	Solid surface artificial stone
		Whether the wall finishes run up to ceiling	Up to level of false ceiling			

### 3. INTERIOR FITTINGS

			Material	Finishes	Accessories
(a)	Doors	Main entrance door	Fire-rated solid core swing timber door	Wood veneer	Electrical lockset, eye viewer, door closer and door stopper
		Door to balcony/ private garden (if applicable)	Fluorocarbon coated aluminium framed bi-folding door, fluorocarbon coated aluminium framed swing door	Grey tinted glass	Door handle and lockset (if applicable)
		Door to utility platform	Not applicable	Not applicable	Not applicable
		Door to private flat roof (if applicable)	Fluorocarbon coated aluminium framed sliding door, fluorocarbon coated aluminium coated framed swing door	Grey tinted glass	Door handle and lockset (if applicable)
		Bedroom door	Hollow core timber swing door or hollow core timber sliding door	Wood veneer	Lockset and door stopper (except sliding door)
		Bathroom door	Hollow core sliding timber door with louver or hollow core swing timber door with louver (if applicable)	Wood veneer and wooden louver (if applicable)	Lockset and door stopper (except sliding door)
		Kitchen door	Fire-rated solid core swing timber door with vision panel	Fire rated glass panel and wood veneer	Door closer and door stopper
		Utility / Store room / Walk-in closet door	Hollow core timber swing door	Wood veneer	Lockset and door stopper
	Gate to private roof	Metal gate	Aluminium finish	Lockset	

## 22. 裝置、裝修物料及設備 FITTINGS, FINISHES AND APPLIANCES

### 3. INTERIOR FITTINGS

		Description	Fittings & equipments	Type	Material	
(b)	Bathroom	(i) Type and material of fittings and equipment	Cabinet	Basin countertop	Solid surface artificial stone	
				Basin cabinet	Wooden cabinet with stainless steel and plastic laminate finish	
				Mirror cabinet	Wooden cabinet with stainless steel, mirror and plastic laminate finish	
				Hanging Rack	Stainless steel and wood finish (For Flats 03, 05, 06, 07, 08, 09 & 21 on G/F, Flats 03, 05, 06, 07, 08, 09, 21, 26 & 27 on UG/F, 1/F to 19/F of Tower 3, Flat 06 on UG/F, Flats 06 & 07 on 1/F, Flats 05, 06 & 07 on 2/F to 19/F of Tower 5)	
			Bathroom fittings	Water closet	Vitreous china	
				Wash basin	Solid surface artificial stone	
				Basin mixer	(a) Chrome plated (except Flats 10 & 11 on 19/F of Tower 3 and Flat 01 on 19/F of Tower 5)	
				Paper holder	(b) Brushed Bronze (for Flats 10 & 11 on 19/F of Tower 3 and Flat 01 on 19/F of Tower 5)	
				Hook		
			Shower compartment	Tempered glass		
		Bathroom appliances	For the appliances provision and brand name, please refer to the "Appliances Schedule"			
		(ii) Type and material of water supply system	Cold water supply	Copper water pipes		
			Hot water supply	Copper pipes with thermal insulation		
		(iii) Type and material of bathing facilities (including shower or bath tub, if applicable)	Shower	a) Shower set b) Rain shower head (for Flats 10 & 11 on 19/F of Tower 3 and Flat 01 on 19/F of Tower 5)	(a) i) Chrome plated (except Flats 10 & 11 on 19/F of Tower 3 and Flat 01 on 19/F of Tower 5) ii) Brushed Bronze (for Flats 10 & 11 on 19/F of Tower 3 and Flat 01 on 19/F of Tower 5) (b) i) Brushed Bronze (for Flats 10 & 11 on 19/F of Tower 3 and Flat 01 on 19/F of Tower 5)	
			Bath tub	Bathtub and mixer (for Flat 01 on UG/F, 1/F to 19/F of Tower 3 and Flats 10 & 11 on 19/F of Tower 3)	Bathtub mixer i) Chrome plated (for Flat 01 on UG/F, 1/F to 19/F of Tower 3) ii) Brushed Bronze (for Flats 10 & 11 on 19/F of Tower 3) Bathtub Glazed Titanium-Steel	
	(iv) Size of bath tub, if applicable	1500 mm length x 700 mm width x 420 mm depth				

Note : 4/F, 13/F and 14/F are omitted.

## 22. 裝置、裝修物料及設備 FITTINGS, FINISHES AND APPLIANCES

### 3. INTERIOR FITTINGS

			Material		
(c)	Kitchen	(i) Sink unit	(a) Stainless steel (except for Flats 10 & 11 on 19/F of Tower 3 and Flat 01 on 19/F of Tower 5) (b) Solid surface artificial stone (for Flats 10 & 11 on 19/F of Tower 3 and Flat 01 on 19/F of Tower 5)		
		(ii) Water supply system	Copper pipes for cold water and copper pipes with thermal insulation for hot water supply		
			Material	Finishes	
		(iii) Kitchen cabinet	Wooden kitchen cabinet fitted with wooden cabinet door panel and counter top	Wood veneer, high gloss lacquer and solid surface artificial stone	
		(iv) Type of all other fittings and equipment	Fire service installations and equipment	Ceiling-mounted smoke detector and sprinkler head are fitted in or near open kitchen (for all open kitchens only)	
			Other fittings	Chrome plated sink mixer	
Other equipment	For the appliances provision and brand name, please refer to the "Appliances Schedule"				
			Fittings	Type	Material
(d)	Bedroom	Fittings (including built-in wardrobe)	Built-in Wardrobe	Not applicable	Not applicable
			Other fittings	Not applicable	Not applicable
(e)	Telephone	Location and number of connection points	Please refer to the "Schedule for Electrical & Mechanical Provisions"		
(f)	Aerials	Location and number of connection points	Please refer to the "Schedule for Electrical & Mechanical Provisions"		



## 22. 裝置、裝修物料及設備 FITTINGS, FINISHES AND APPLIANCES

### 3. INTERIOR FITTINGS

			Fittings	Type	Material			
(g)	Electrical installations	(i) Electrical fittings (including safety devices)	Electrical fittings	Faceplate for all switches and power sockets				
			Safety devices	<b>a. Single phase electricity supply with miniature circuit breaker distribution board is for:</b>				
				<b>Tower</b>	<b>Floor</b>	<b>Flat</b>		
				3	G/F	03, 05-11, 15-16 & 19-21		
					UG/F-1/F	01, 03, 05-11, 15-16, 19, 21 & 25-27		
					2/F-3/F & 5/F-8/F	01-03, 05-11, 15-16, 19, 21 & 26-27		
					9/F-12/F & 15/F-18/F	01-03, 05-11, 15-16, 19 & 21		
					19/F	01-03, 05-09, 21 & 26-27		
				5	UG/F	01, 06-12 & 15-16		
					1/F	01, 06-12 & 15-16		
					2/F-3/F, 5/F-12/F & 15/F-18/F	01, 03, 05-12 & 15-16		
			19/F		05-12 & 15-16			

Note : 4/F, 13/F and 14/F are omitted.

## 22. 裝置、裝修物料及設備 FITTINGS, FINISHES AND APPLIANCES

### 3. INTERIOR FITTINGS

			Fittings	Type	Material		
(g)	Electrical installations	(i) Electrical fittings (including safety devices)	Safety devices	<b>b. Three phases electricity supply with miniature circuit breaker distribution board is for:</b>			
				<b>Tower</b>	<b>Floor</b>	<b>Flat</b>	
				3	G/F	12 & 17-18	
					UG/F-1/F	12, 17-18, 20, 23 & 25	
					2/F-3/F & 5/F-8/F	12, 17-18, 20, 22, 23 & 25	
					9/F-12/F & 15/F-18/F	12, 17-18, 20, 22, 23 & 25	
					19/F	10-11, 22-23 & 25	
				5	UG/F	02	
					1/F	02	
					2/F-3/F, 5/F-12/F & 15/F-18/F	02	
		19/F	01				
		(ii) Whether conduits are concealed or exposed	Conduits are partly concealed and partly exposed <sup>1</sup>				
		(iii) Location and number of power points and air-conditioner points	Please refer to the "Schedule for Electrical & Mechanical Provisions"				

Note : 4/F, 13/F and 14/F are omitted.

## 22. 裝置、裝修物料及設備 FITTINGS, FINISHES AND APPLIANCES

### 3. INTERIOR FITTINGS

			Fittings
(h)	Gas supply	Type	Towngas
		System	Gas supply pipe is provided and connected to gas hob and gas water heater
		Location	Please refer to the "Schedule for the location and number of Electrical & Mechanical Provisions"
(i)	Washing machine connection point	Location	Please refer to the "Schedule for the location and number of Electrical & Mechanical Provisions"
		Design	Drain point and water point are provided for washing machine
(j)	Water supply	Material of water pipes	Copper pipes for cold water and copper pipes with thermal insulation for hot water supply
		Whether water pipes are concealed or exposed	Water pipes are partly concealed and partly exposed <sup>2</sup>
		Whether hot water is available	Hot water supply to kitchen and bathroom

Remarks: 1. Other than those parts of the conduits concealed within concrete, the rest of them are exposed. The exposed conduits may be covered or hidden by false ceilings, bulkheads, cabinets, claddings, non-concrete partition walls, designated pipe ducts or other materials.  
2. Other than those parts of the water pipes concealed within concrete, the rest of them are exposed. The exposed water pipes may be covered or hidden by false ceilings, bulkheads, cabinets, claddings, non-concrete partition walls, designated pipe ducts or other materials.

## 22. 裝置、裝修物料及設備 FITTINGS, FINISHES AND APPLIANCES

### 4. MISCELLANEOUS

				Tower 3 and Tower 5		
(a)	Lifts	(i) Brand name and model number	Brand Name	Toshiba		
			Model Number	ELCOSMO-III		
				Podium		
			Brand Name	Toshiba		
		Model Number	SPACEL-III			
		(ii) Number and floors served by them	Number of lifts	<b>Phase 1</b> Towers : 6 Podium : 5		
			<b>Phase 1</b>	<b>Lift no.</b>	<b>No. of floors served</b>	
		Floor served by the lifts	Tower 3 Tower 5 Podium	T3-L1, L2 & L3 T5-L1, L2 & L3 P-L1 P-L2 P-L3 P-L4 P-L5	B/F-19/F (4/F, 13/F and 14/F are omitted) B/F, UG/F-19/F (4/F, 13/F and 14/F are omitted) B/F, UG/F and 1/F B/F, UG/F, M1/F, 1/F and M2/F P1/F, P2/F and P5/F P1/F and P3/F B/F, G/F and UG/F	
(b)	Letter box	Material	Stainless steel			
(c)	Refuse collection	(i) Means of refuse collection	Refuse will be collected by cleaners			
		(ii) Location of refuse room	Refuse storage and material recovery room is located at each residential floor. Refuse storage and material recovery chamber is located at G/F of Tower 1.			

The vendor undertakes that if lifts or appliances of the specified brand name or model number are not installed in the phase, lifts or appliances of comparable quality will be installed.

## 22. 裝置、裝修物料及設備 FITTINGS, FINISHES AND APPLIANCES

### 4. MISCELLANEOUS

			Water meter	Electricity meter	Gas meter		
d.	Water meter, electricity meter and gas meter	(i) Location	Inside common water meter room/ water meter cabinet on each floor for Tower 3 & 5	Inside common electric meter room/ electrical meter cabinet on each floor for Tower 3 & 5	<b>a. Kitchen</b>		
					<b>Tower</b>	<b>Floor</b>	<b>Flat</b>
					3	G	16 & 19
						UG-1	01, 16 & 19
						2-3, 5-12 & 15-18	01-02, 16 & 19
						19	01-02 & 10-11
					5	19	01
					<b>b. Balcony</b>		
					<b>Tower</b>	<b>Floor</b>	<b>Flat</b>
					3	UG-1	03, 05-12, 15, 17-18, 20-21, 23 & 25-27
						2-3, 5-12 & 15-18	03, 05-12, 15, 17-18, 20-23 & 25-27
						19	03, 05-09, 21-23 & 25-27
					5	1	01-02, 06-12 & 15-16
		2-3, 5-12 & 15-18	01-03, 05-12 & 15-16				
19	05-12 & 15-16						
<b>c. Private Garden</b>							
<b>Tower</b>	<b>Floor</b>	<b>Flat</b>					
3	G	03, 05-12, 15, 17-18 & 20-21					
5	UG	01-02, 06-12 & 15-16					
	(ii) Whether they are separate or communal meters for residential properties	Separate meter	Separate meter	Separate meter			

Note : 4/F, 13/F and 14/F are omitted.

## 22. 裝置、裝修物料及設備 FITTINGS, FINISHES AND APPLIANCES

### 5. SECURITY FACILITIES

Security system and equipment	Access control	Visitor panel with access card reader (octopus card) are installed at the residential entrance lobby for resident access. Door phone is provided in all residential units.
	CCTV	CCTV system is provided at residential entrance lobby, residents' clubhouse, all lifts, roof floor and public lane connecting directly to the caretaker's counter.
Details of built-in provisions	Door phone with panic alarm in all flats and connecting to the caretaker's counter at the residential entrance lobby.	
Location of built-in provisions	Please refer to the "Schedule for the location and number of Electrical & Mechanical Provisions".	

### 6. APPLIANCES

Brand name and model number	Please refer to the "Appliances Schedule"

The vendor undertakes that if lifts or appliances of the specified brand name or model number are not installed in the phase, lifts or appliances of comparable quality will be installed.

## 22. 裝置、裝修物料及設備 FITTINGS, FINISHES AND APPLIANCES

### 6. 設備說明 Appliances Schedule

位置 Location	設備 Appliance	品牌 Brand Name	型號 Model No.	第3座 Tower 3																
				地下 G/F																
				03	05	06	07	08	09	10	11	12	15	16	17	18	19	20	21	
廚房 / 開放式廚房 Kitchen / Open Kitchen	電煮食爐 Induction Cooker	Mia Cucina	FEN32C	-	-	-	-	-	-	-	-	V	-	V	-	-	-	-	V	-
	雙頭氣體煮食爐 Cooker (Gas Hob - 2 Ring)		MY32C	V	V	V	V	V	V	V	-	V	-	V	V	V	V	-	V	
	單頭氣體煮食爐 Cooker (Gas Hob - 1 Ring)		MY31C	-	-	-	-	-	-	-	-	-	-	-	V	-	-	V	-	-
	嵌入式微波爐 Built-in Microwave Oven	Siemens	BF525LMS0H	V	V	V	V	V	V	V	V	V	V	-	V	V	-	V	V	
	嵌入式微波燒烤爐 Built-in Microwave Oven with Grille		BE634LGS1B	-	-	-	-	-	-	-	-	-	-	V	-	-	V	-	-	
	嵌入式單門雪櫃 Built-in Refrigerator	Siemens	KI24LV20HK	V	V	V	V	V	V	V	V	V	V	-	V	V	-	V	V	
	嵌入式雪櫃 Built-in Refrigerator	Mia Cucina	BYFG177	-	-	-	-	-	-	-	-	-	-	-	V	-	-	V	-	-
	抽油煙機 Cooker Hood	Mia Cucina	MY60	V	V	V	V	V	V	V	V	V	V	V	V	V	V	V	V	V
	嵌入式洗衣乾衣機 Built-in Washer Dryer	Mia Cucina	BYWD85	V	V	V	V	V	V	V	V	V	V	V	V	V	V	V	V	V
	煤氣熱水爐 Gas Water Heater	TGC	TRJW222TFQL	-	-	-	-	-	-	-	-	-	-	-	V	-	-	V	-	-
抽氣扇 Exhaust Fan	Panasonic	FV-15WH307	-	-	-	-	-	-	-	-	-	-	-	V	-	-	V	-	-	
客廳及飯廳 Living Room and Dining Room	門前對講機 Door Phone Unit	Videx	6378	V	V	V	V	V	V	V	V	V	V	V	V	V	V	V	V	
浴室 Bathroom	電熱水爐 Electrical Water Heater	Stiebel Eltron	DHB 24 Sti	-	-	-	-	-	-	-	-	-	V	-	-	V	V	-	-	-
	抽氣扇 Exhaust Fan	Panasonic	FV-15WH307	-	-	-	-	-	-	-	V	-	-	-	-	-	-	V	-	-
	抽氣扇 Exhaust Fan	Gelec	DPT10-24H	V	V	V	V	V	V	-	V	V	V	V	V	V	-	V	V	
私人花園 Private Garden	煤氣熱水爐 Gas Water Heater	TGC	RBOX16	-	-	-	-	-	-	-	-	V	-	V	-	-	-	-	V	-
	煤氣熱水爐 Gas Water Heater	TGC	RBOX16Q	V	V	V	V	V	V	V	-	-	-	-	-	-	-	-	-	V

備註：1. 上表 "V" 代表「提供」  
2. 上表 "-" 代表「不提供」  
3. 賣方承諾如該期數中沒有安裝指明的品牌名稱或產品型號的升降機或設備，便會安裝品質相若的升降機或設備。

Notes: 1. The symbol "V" as shown in the above table denotes "Provided"  
2. The symbol "-" as shown in the above table denotes "Not provided"  
3. The vendor undertakes that if lifts or appliances of the specified brand name or model number are not installed in the phase, lifts or appliances of comparable quality will be installed.

## 22. 裝置、裝修物料及設備 FITTINGS, FINISHES AND APPLIANCES

### 6. 設備說明 Appliances Schedule

位置 Location	設備 Appliance	品牌 Brand Name	型號 Model No.	第3座 Tower 3																			
				高層地下 UG/F																			
				01	03	05	06	07	08	09	10	11	12	15	16	17	18	19	20	21	23	25	26
廚房 / 開放式廚房 Kitchen / Open Kitchen	電煮食爐 Induction Cooker	Mia Cucina	FEN32C	-	-	-	-	-	-	-	-	-	V	-	V	-	-	-	-	-	-	V	V
	雙頭氣體煮食爐 Cooker (Gas Hob - 2 Ring)		MY32C	V	V	V	V	V	V	V	V	-	V	-	V	V	V	V	V	V	V	-	-
	單頭氣體煮食爐 Cooker (Gas Hob - 1 Ring)		MY31C	V	-	-	-	-	-	-	-	-	-	-	V	-	-	V	-	-	-	-	-
	嵌入式微波爐 Built-in Microwave Oven	Siemens	BF525LMS0H	-	V	V	V	V	V	V	V	V	V	V	-	V	V	-	V	V	V	V	V
	嵌入式微波燒烤爐 Built-in Microwave Oven with Grille		BE634LGS1B	V	-	-	-	-	-	-	-	-	-	-	V	-	-	V	-	-	-	-	-
	嵌入式單門雪櫃 Built-in Refrigerator	Siemens	KI24LV20HK	-	V	V	V	V	V	V	V	V	V	V	-	V	V	-	V	V	V	V	V
	嵌入式雪櫃 Built-in Refrigerator	Mia Cucina	BYFG177	V	-	-	-	-	-	-	-	-	-	-	V	-	-	V	-	-	-	-	-
	抽油煙機 Cooker Hood	Mia Cucina	MY60	V	V	V	V	V	V	V	V	V	V	V	V	V	V	V	V	V	V	V	V
	嵌入式洗衣乾衣機 Built-in Washer Dryer	Mia Cucina	BYWD85	V	V	V	V	V	V	V	V	V	V	V	V	V	V	V	V	V	V	V	V
	煤氣熱水爐 Gas Water Heater	TGC	TRJW222TFQL	V	-	-	-	-	-	-	-	-	-	-	-	V	-	-	V	-	-	-	-
	抽氣扇 Exhaust Fan	Panasonic	FV-15WH307	V	-	-	-	-	-	-	-	-	-	-	-	V	-	-	V	-	-	-	-
客廳及飯廳 Living Room and Dining Room	門前對講機 Door Phone Unit	Videx	6378	V	V	V	V	V	V	V	V	V	V	V	V	V	V	V	V	V	V	V	
露台 Balcony	煤氣熱水爐 Gas Water Heater	TGC	RBOX16	-	-	-	-	-	-	-	-	V	-	V	-	-	-	-	-	-	-	-	
	煤氣熱水爐 Gas Water Heater	TGC	RBOX16Q	-	V	V	V	V	V	V	V	-	-	-	-	-	-	-	V	-	-	-	
浴室 Bathroom	電熱水爐 Electrical Water Heater	Stiebel Eltron	DHB 24 Sti	-	-	-	-	-	-	-	-	-	V	-	-	V	V	-	V	-	V	-	
	抽氣扇 Exhaust Fan	Panasonic	FV-15WH307	-	-	-	-	-	-	-	V	-	-	-	V	-	-	V	-	-	-	-	
	抽氣扇 Exhaust Fan	Gelec	DPT10-24H	-	V	V	V	V	V	V	-	V	V	V	-	V	V	-	V	V	V	V	
浴室 1 Bathroom 1	抽氣扇 Exhaust Fan	Panasonic	FV-15WH307	V	-	-	-	-	-	-	-	-	-	-	-	-	-	-	-	-	-	-	
浴室 2 Bathroom 2	抽氣扇 Exhaust Fan	Gelec	DPT10-24H	V	-	-	-	-	-	-	-	-	-	-	-	-	-	-	-	-	-	-	
私人花園 Private Garden	煤氣熱水爐 Gas Water Heater	TGC	RBOX16Q	V	-	-	-	-	-	-	-	-	-	-	-	-	-	-	-	-	-	V	

備註：1. 上表 "V" 代表「提供」  
2. 上表 "-" 代表「不提供」  
3. 賣方承諾如該期數中沒有安裝指明的品牌名稱或產品型號的升降機或設備，便會安裝品質相若的升降機或設備。

Notes: 1. The symbol "V" as shown in the above table denotes "Provided"  
2. The symbol "-" as shown in the above table denotes "Not provided"  
3. The vendor undertakes that if lifts or appliances of the specified brand name or model number are not installed in the phase, lifts or appliances of comparable quality will be installed.



## 22. 裝置、裝修物料及設備 FITTINGS, FINISHES AND APPLIANCES

### 6. 設備說明 Appliances Schedule

位置 Location	設備 Appliance	品牌 Brand Name	型號 Model No.	第3座 Tower 3																				
				1樓 1/F																				
				01	03	05	06	07	08	09	10	11	12	15	16	17	18	19	20	21	23	25	26	27
廚房/ 開放式廚房 Kitchen / Open Kitchen	電煮食爐 Induction Cooker	Mia Cucina	FEN32C	-	-	-	-	-	-	-	-	-	V	-	V	-	-	-	-	-	-	-	V	V
	雙頭氣體煮食爐 Cooker (Gas Hob - 2 Ring)		MY32C	V	V	V	V	V	V	V	V	-	V	-	V	V	V	V	V	V	V	V	-	-
	單頭氣體煮食爐 Cooker (Gas Hob - 1 Ring)		MY31C	V	-	-	-	-	-	-	-	-	-	-	V	-	-	V	-	-	-	-	-	-
	嵌入式微波爐 Built-in Microwave Oven	Siemens	BF525LMS0H	-	V	V	V	V	V	V	V	V	V	V	V	-	V	V	-	V	V	V	V	V
	嵌入式微波燒烤爐 Built-in Microwave Oven with Grille		BE634LGS1B	V	-	-	-	-	-	-	-	-	-	-	V	-	-	V	-	-	-	-	-	-
	嵌入式單門雪櫃 Built-in Refrigerator	Siemens	KI24LV20HK	-	V	V	V	V	V	V	V	V	V	V	V	-	V	V	-	V	V	V	V	V
	嵌入式雪櫃 Built-in Refrigerator	Mia Cucina	BYFG177	V	-	-	-	-	-	-	-	-	-	-	-	V	-	-	V	-	-	-	-	-
	抽油煙機 Cooker Hood	Mia Cucina	MY60	V	V	V	V	V	V	V	V	V	V	V	V	V	V	V	V	V	V	V	V	V
	嵌入式洗衣乾衣機 Built-in Washer Dryer	Mia Cucina	BYWD85	V	V	V	V	V	V	V	V	V	V	V	V	V	V	V	V	V	V	V	V	V
	煤氣熱水爐 Gas Water Heater	TGC	TRJW222TFQL	V	-	-	-	-	-	-	-	-	-	-	-	V	-	-	V	-	-	-	-	-
	抽氣扇 Exhaust Fan	Panasonic	FV-15WH307	V	-	-	-	-	-	-	-	-	-	-	-	V	-	-	V	-	-	-	-	-
客廳及飯廳 Living Room and Dining Room	門前對講機 Door Phone Unit	Videx	6378	V	V	V	V	V	V	V	V	V	V	V	V	V	V	V	V	V	V	V	V	
露台 Balcony	煤氣熱水爐 Gas Water Heater	TGC	RBOX16	-	-	-	-	-	-	-	-	V	-	V	-	-	-	-	-	-	-	-	-	
	煤氣熱水爐 Gas Water Heater	TGC	RBOX16Q	V	V	V	V	V	V	V	V	-	-	-	-	-	-	-	-	V	-	-	V	V
浴室 Bathroom	電熱水爐 Electrical Water Heater	Stiebel Eltron	DHB 24 Sti	-	-	-	-	-	-	-	-	-	V	-	-	V	V	-	V	-	V	V	-	-
	抽氣扇 Exhaust Fan	Panasonic	FV-15WH307	-	-	-	-	-	-	-	V	-	-	-	V	-	-	V	-	-	-	-	-	-
	抽氣扇 Exhaust Fan	Gelec	DPT10-24H	-	V	V	V	V	V	V		V	V	V		V	V		V	V	V	V	V	V
浴室 1 Bathroom 1	抽氣扇 Exhaust Fan	Panasonic	FV-15WH307	V	-	-	-	-	-	-	-	-	-	-	-	-	-	-	-	-	-	-	-	-
浴室 2 Bathroom 2	抽氣扇 Exhaust Fan	Gelec	DPT10-24H	V	-	-	-	-	-	-	-	-	-	-	-	-	-	-	-	-	-	-	-	-

備註：1. 上表 "V" 代表「提供」  
2. 上表 "-" 代表「不提供」  
3. 賣方承諾如該期數中沒有安裝指明的品牌名稱或產品型號的升降機或設備，便會安裝品質相若的升降機或設備。

Notes: 1. The symbol "V" as shown in the above table denotes "Provided"  
2. The symbol "-" as shown in the above table denotes "Not provided"  
3. The vendor undertakes that if lifts or appliances of the specified brand name or model number are not installed in the phase, lifts or appliances of comparable quality will be installed.

## 22. 裝置、裝修物料及設備 FITTINGS, FINISHES AND APPLIANCES

### 6. 設備說明 Appliances Schedule

位置 Location	設備 Appliance	品牌 Brand Name	型號 Model No.	第3座 Tower 3																										
				2樓-18樓 2/F-18/F																										
				01	02	03	05	06	07	08	09	10	11	12	15	16	17	18	19	20	21	22	23	25	26	27				
廚房 / 開放式廚房 Kitchen / Open Kitchen	電煮食爐 Induction Cooker	Mia Cucina	FEN32C	-	-	-	-	-	-	-	-	-	V	-	V	-	-	-	-	-	-	-	-	-	V	V				
	雙頭氣體煮食爐 Cooker (Gas Hob - 2 Ring)		MY32C	V	V	V	V	V	V	V	V	V	-	V	-	V	V	V	V	V	V	V	V	V	-	-				
	單頭氣體煮食爐 Cooker (Gas Hob - 1 Ring)		MY31C	V	V	-	-	-	-	-	-	-	-	-	V	-	-	V	-	-	-	-	-	-	-	-				
	嵌入式微波爐 Built-in Microwave Oven	Siemens	BF525LMS0H	-	-	V	V	V	V	V	V	V	V	V	-	V	V	-	V	V	V	V	V	V	V	V				
	嵌入式微波燒烤爐 Built-in Microwave Oven with Grille		BE634LGS1B	V	V	-	-	-	-	-	-	-	-	-	V	-	-	V	-	-	-	-	-	-	-					
	嵌入式單門雪櫃 Built-in Refrigerator	Siemens	KI24LV20HK	-	-	V	V	V	V	V	V	V	V	V	-	V	V	-	V	V	V	V	V	V	V	V				
	嵌入式雪櫃 Built-in Refrigerator	Mia Cucina	BYFG177	V	V	-	-	-	-	-	-	-	-	-	V	-	-	V	-	-	-	-	-	-	-					
	抽油煙機 Cooker Hood	Mia Cucina	MY60	V	V	V	V	V	V	V	V	V	V	V	V	V	V	V	V	V	V	V	V	V	V	V				
	嵌入式洗衣乾衣機 Built-in Washer Dryer	Mia Cucina	BYWD85	V	V	V	V	V	V	V	V	V	V	V	V	V	V	V	V	V	V	V	V	V	V	V				
	煤氣熱水爐 Gas Water Heater	TGC	TRJW222TFQL	V	V	-	-	-	-	-	-	-	-	-	-	V	-	-	V	-	-	-	-	-	-	-				
抽氣扇 Exhaust Fan	Panasonic	FV-15WH307	V	V	-	-	-	-	-	-	-	-	-	-	V	-	-	V	-	-	-	-	-	-	-					
客廳及飯廳 Living Room and Dining Room	門前對講機 Door Phone Unit	Videx	6378	V	V	V	V	V	V	V	V	V	V	V	V	V	V	V	V	V	V	V	V	V	V					
露台 Balcony	煤氣熱水爐 Gas Water Heater	TGC	RBOX16	-	-	-	-	-	-	-	-	-	V	-	V	-	-	-	-	-	-	-	-	-	-					
	煤氣熱水爐 Gas Water Heater	TGC	RBOX16Q	V	-	V	V	V	V	V	V	V	-	-	-	-	-	-	-	-	V	-	-	-	V	V				
浴室 Bathroom	電熱水爐 Electrical Water Heater	Stiebel Eltron	DHB 24 Sti	-	-	-	-	-	-	-	-	-	-	V	-	-	V	V	-	V	-	V	V	V	-	-				
	抽氣扇 Exhaust Fan	Panasonic	FV-15WH307	-	V	-	-	-	-	-	-	V	-	-	-	V	-	-	V	-	-	-	-	-	-	-				
	抽氣扇 Exhaust Fan	Gelec	DPT10-24H	-	-	V	V	V	V	V	V	-	V	V	V	-	V	V	-	V	V	V	V	V	V	V				
浴室 1 Bathroom 1	抽氣扇 Exhaust Fan	Panasonic	FV-15WH307	V	-	-	-	-	-	-	-	-	-	-	-	-	-	-	-	-	-	-	-	-	-	-				
浴室 2 Bathroom 2	抽氣扇 Exhaust Fan	Gelec	DPT10-24H	V	-	-	-	-	-	-	-	-	-	-	-	-	-	-	-	-	-	-	-	-	-	-				

備註：1. 上表 "V" 代表「提供」  
2. 上表 "-" 代表「不提供」  
3. 賣方承諾如該期數中沒有安裝指明的品牌名稱或產品型號的升降機或設備，便會安裝品質相若的升降機或設備。  
4. 不設4樓、13樓及14樓。

Notes : 1. The symbol "V" as shown in the above table denotes "Provided"  
2. The symbol "-" as shown in the above table denotes "Not provided"  
3. The vendor undertakes that if lifts or appliances of the specified brand name or model number are not installed in the phase, lifts or appliances of comparable quality will be installed.  
4. 4/F, 13/F and 14/F are omitted.

## 22. 裝置、裝修物料及設備 FITTINGS, FINISHES AND APPLIANCES

### 6. 設備說明 Appliances Schedule

位置 Location	設備 Appliance	品牌 Brand Name	型號 Model No.	第3座 Tower 3																
				19樓 19/F																
				01	02	03	05	06	07	08	09	10	11	21	22	23	25	26	27	
廚房 / 開放式廚房 Kitchen / Open Kitchen	電煮食爐 Induction Cooker	Mia Cucina	FEN32C	-	-	-	-	-	-	-	-	-	-	-	-	-	-	V	V	
	雙頭氣體煮食爐 Cooker (Gas Hob - 2 Ring)		MY32C	V	V	V	V	V	V	V	V	-	-	V	V	V	V	-	-	
	單頭氣體煮食爐 Cooker (Gas Hob - 1 Ring)		MY31C	V	V	-	-	-	-	-	-	-	-	-	-	-	-	-	-	-
	組合式炒鑊氣體煮食爐 CombiSet - Wok-burner Gas Hob	Miele	CS 1018 G	-	-	-	-	-	-	-	-	-	V	V	-	-	-	-	-	
	組合式雙頭氣體煮食爐 CombiSet - 2-burner Gas Hob		CS 1013-1	-	-	-	-	-	-	-	-	-	V	V	-	-	-	-	-	-
	微波爐 Microwave	Siemens	BF525LMS0H	-	-	V	V	V	V	V	V	-	-	V	V	V	V	V	V	
	嵌入式微波燒烤爐 Built-in Microwave Oven with Grille		BE634LGS1B	V	V	-	-	-	-	-	-	-	-	-	-	-	-	-	-	-
	嵌入式微波爐 Built-in Microwave Oven	Miele	M 2234 SC	-	-	-	-	-	-	-	-	-	V	V	-	-	-	-	-	-
	嵌入式焗爐 Built-in Oven		H 7264 B	-	-	-	-	-	-	-	-	-	V	V	-	-	-	-	-	-
	嵌入式單門雪櫃 Built-in Refrigerator	Siemens	KI24LV20HK	-	-	V	V	V	V	V	V	-	-	V	V	V	V	V	V	V
	嵌入雪櫃 Built-in Refrigerator	Mia Cucina	BYFG177	V	V	-	-	-	-	-	-	-	-	-	-	-	-	-	-	-
	嵌入式雪櫃連冰箱 Built-in Fridge-freezer	Miele	KFNS 37232 iD	-	-	-	-	-	-	-	-	-	V	V	-	-	-	-	-	-
	抽油煙機 Cooker Hood	Mia Cucina	MY60	V	V	V	V	V	V	V	V	-	-	V	V	V	V	V	V	V
	纖巧型抽油煙機 Slimline Cooker Hood	Miele	DA 3496 HP	-	-	-	-	-	-	-	-	-	V	V	-	-	-	-	-	-
	嵌入式洗衣乾衣機 Built-in Washer Dryer	Mia Cucina	BYWD85	V	V	V	V	V	V	V	V	-	-	V	V	V	V	V	V	V
	2合1洗衣乾衣機 2-in-1 Washer Dryer	Siemens	WK14D321HK	-	-	-	-	-	-	-	-	-	V	V	-	-	-	-	-	-
	嵌入式酒櫃 Built-under Wine Conditioning Unit	Miele	KWT 6321 UG	-	-	-	-	-	-	-	-	-	V	V	-	-	-	-	-	-
	煤氣熱水爐 Gas Water Heater	TGC	TRJW222TFQL	V	V	-	-	-	-	-	-	-	V	V	-	-	-	-	-	-
	抽氣扇 Exhaust Fan	Panasonic	FV-15WH307	V	V	-	-	-	-	-	-	-	-	-	-	-	-	-	-	-
	抽氣扇 Exhaust Fan	Gelec	DPT10-24H	-	-	-	-	-	-	-	-	-	V	V	-	-	-	-	-	-

備註：1. 上表 "V" 代表「提供」  
2. 上表 "-" 代表「不提供」  
3. 賣方承諾如該期數中沒有安裝指明的品牌名稱或產品型號的升降機或設備，便會安裝品質相若的升降機或設備。

Notes: 1. The symbol "V" as shown in the above table denotes "Provided"  
2. The symbol "-" as shown in the above table denotes "Not provided"  
3. The vendor undertakes that if lifts or appliances of the specified brand name or model number are not installed in the phase, lifts or appliances of comparable quality will be installed.

## 22. 裝置、裝修物料及設備 FITTINGS, FINISHES AND APPLIANCES

### 6. 設備說明 Appliances Schedule

位置 Location	設備 Appliance	品牌 Brand Name	型號 Model No.	第3座 Tower 3																
				19樓 19/F																
				01	02	03	05	06	07	08	09	10	11	21	22	23	25	26	27	
客廳及飯廳 Living Room and Dining Room	門前對講機 Door Phone Unit	Videx	6378	V	V	V	V	V	V	V	V	V	V	V	V	V	V	V	V	
露台 Balcony	煤氣熱水爐 Gas Water Heater	TGC	RBOX16Q	V	-	V	V	V	V	V	V	-	-	V	-	-	-	V	V	
浴室 Bathroom	電熱水爐 Electrical Water Heater	Stiebel Eltron	DHB 24 Sti	-	-	-	-	-	-	-	-	-	-	-	V	V	V	-	-	
	抽氣扇 Exhaust Fan	Panasonic	FV-15WH307	-	V	-	-	-	-	-	-	-	-	-	-	-	-	-	-	
	抽氣扇 Exhaust Fan	Gelec	DPT10-24H	-	-	V	V	V	V	V	V	V	-	V	V	V	V	V	V	
浴室 1 Bathroom 1	抽氣扇 Exhaust Fan	Panasonic	FV-15WH307	V	-	-	-	-	-	-	-	V	V	-	-	-	-	-	-	
浴室 2 Bathroom 2	抽氣扇 Exhaust Fan	Gelec	DPT10-24H	V	-	-	-	-	-	-	-	-	V	-	-	-	-	-	-	
浴室 3 Bathroom 3	抽氣扇 Exhaust Fan	Gelec	DPT10-24H	-	-	-	-	-	-	-	-	-	V	-	-	-	-	-	-	
工作間廁所 Utility Lavatory	抽氣扇 Exhaust Fan	Panasonic	FV-15WH307	-	-	-	-	-	-	-	-	V	-	-	-	-	-	-	-	
	抽氣扇 Exhaust Fan	Gelec	DPT10-24H	-	-	-	-	-	-	-	-	-	V	-	-	-	-	-	-	

備註：1. 上表 "V" 代表「提供」  
2. 上表 "-" 代表「不提供」  
3. 賣方承諾如該期數中沒有安裝指明的品牌名稱或產品型號的升降機或設備，便會安裝品質相若的升降機或設備。

Notes : 1. The symbol "V" as shown in the above table denotes "Provided"  
2. The symbol "-" as shown in the above table denotes "Not provided"  
3. The vendor undertakes that if lifts or appliances of the specified brand name or model number are not installed in the phase, lifts or appliances of comparable quality will be installed.

## 22. 裝置、裝修物料及設備 FITTINGS, FINISHES AND APPLIANCES

### 6. 設備說明 Appliances Schedule

位置 Location	設備 Appliance	品牌 Brand Name	型號 Model No.	第5座 Tower 5																							
				高層地下 UG/F												1樓 1/F											
				01	02	06	07	08	09	10	11	12	15	16	01	02	06	07	08	09	10	11	12	15	16		
廚房 / 開放式廚房 Kitchen / Open Kitchen	電煮食爐 Induction Cooker	Mia Cucina	FEN32C	V	V	-	-	V	V	-	V	V	V	-	V	V	-	V	V	-	V	V	V	-			
	雙頭氣體煮食爐 Cooker (Gas Hob - 2 Ring)		MY32C	-	-	V	V	-	-	V	-	-	-	V	-	-	V	-	-	-	V	-	-	-	V		
	嵌入式微波爐 Built-in Microwave	Siemens	BF525LMS0H	V	V	V	V	V	V	V	V	V	V	V	V	V	V	V	V	V	V	V	V	V	V		
	嵌入式單門雪櫃 Built-in Refrigerator	Siemens	KI24LV20HK	V	V	V	V	V	V	V	V	V	V	V	V	V	V	V	V	V	V	V	V	V	V		
	抽油煙機 Cooker Hood	Mia Cucina	MY60	V	V	V	V	V	V	V	V	V	V	V	V	V	V	V	V	V	V	V	V	V	V		
	洗衣乾衣機 Washer Dryer	Mia Cucina	BYWD85	V	V	V	V	V	V	V	V	V	V	V	V	V	V	V	V	V	V	V	V	V	V	V	
客廳及飯廳 Living Room and Dining Room	門前對講機 Door Phone Unit	Videx	6378	V	V	V	V	V	V	V	V	V	V	V	V	V	V	V	V	V	V	V	V	V	V		
露台 Balcony	煤氣熱水爐 Gas Water Heater	TGC	RBOX16	-	-	-	-	-	-	-	-	-	-	-	-	-	-	-	-	V	-	V	V	V	V	-	
	煤氣熱水爐 Gas Water Heater	TGC	RBOX16Q	-	-	-	-	-	-	-	-	-	-	-	-	V	-	V	V	-	V	-	-	-	-	V	
浴室 Bathroom	電熱水爐 Electrical Water Heater	Stiebel Eltron	DHB 24 Sti	-	V	-	-	-	-	-	-	-	-	-	-	V	-	-	-	-	-	-	-	-	-	-	
	抽氣扇 Exhaust Fan	Panasonic	FV-15WH307	V	-	-	-	-	-	V	-	-	-	-	V	-	-	-	-	-	V	-	-	-	-	-	
	抽氣扇 Exhaust Fan	Gelec	DPT10-24H	-	V	V	V	V	V	-	V	V	V	V	-	V	V	V	V	V	-	V	V	V	V	V	
私人花園 Private Garden	煤氣熱水爐 Gas Water Heater	TGC	RBOX16	-	-	-	V	V	-	V	V	V	V	-	-	-	-	-	-	-	-	-	-	-	-	-	
	煤氣熱水爐 Gas Water Heater	TGC	RBOX16Q	V	-	V	-	-	V	-	-	-	-	V	-	-	-	-	-	-	-	-	-	-	-	-	

備註：1. 上表 "V" 代表「提供」  
2. 上表 "-" 代表「不提供」  
3. 賣方承諾如該期數中沒有安裝指明的品牌名稱或產品型號的升降機或設備，便會安裝品質相若的升降機或設備。

Notes: 1. The symbol "V" as shown in the above table denotes "Provided"  
2. The symbol "-" as shown in the above table denotes "Not provided"  
3. The vendor undertakes that if lifts or appliances of the specified brand name or model number are not installed in the phase, lifts or appliances of comparable quality will be installed.

## 22. 裝置、裝修物料及設備 FITTINGS, FINISHES AND APPLIANCES

### 6. 設備說明 Appliances Schedule

位置 Location	設備 Appliance	品牌 Brand Name	型號 Model No.	第5座 Tower 5																							
				2樓-18樓 2/F-18/F												19樓 19/F											
				01	02	03	05	06	07	08	09	10	11	12	15	16	01	05	06	07	08	09	10	11	12	15	16
廚房 / 開放式廚房 Kitchen / Open Kitchen	電煮食爐 Induction Cooker	Mia Cucina	FEN32C	V	V	-	-	-	V	V	V	-	V	V	V	-	-	-	V	V	V	-	V	V	V	-	
	雙頭氣體煮食爐 Cooker (Gas Hob - 2 Ring)		MY32C	-	-	V	V	V	-	-	-	V	-	-	-	V	-	V	V	-	-	-	V	-	-	-	V
	組合式炒鑊氣體煮食爐 CombiSet - Wok-burner Gas Hob	Miele	CS 1018 G	-	-	-	-	-	-	-	-	-	-	-	-	-	V	-	-	-	-	-	-	-	-	-	
	組合式雙頭氣體煮食爐 CombiSet - 2-burner Gas Hob		CS 1013-1	-	-	-	-	-	-	-	-	-	-	-	-	-	V	-	-	-	-	-	-	-	-	-	-
	嵌入式微波爐 Built-in Microwave Oven	Siemens	BF525LMS0H	V	V	V	V	V	V	V	V	V	V	V	V	V	-	V	V	V	V	V	V	V	V	V	V
	嵌入式微波爐 Built-in Microwave Oven	Miele	M 2234 SC	-	-	-	-	-	-	-	-	-	-	-	-	-	V	-	-	-	-	-	-	-	-	-	
	嵌入式焗爐 Built-in Oven		H 7264 B	-	-	-	-	-	-	-	-	-	-	-	-	-	V	-	-	-	-	-	-	-	-	-	
	雪櫃 Refrigerator	Siemens	KI24LV20HK	V	V	V	V	V	V	V	V	V	V	V	V	V	-	V	V	V	V	V	V	V	V	V	V
	嵌入式雪櫃連冰箱 Built-in Fridge-freezer	Miele	KFNS 37232 1D	-	-	-	-	-	-	-	-	-	-	-	-	-	V	-	-	-	-	-	-	-	-	-	-
	抽油煙機 Cooker Hood	Mia Cucina	MY60	V	V	V	V	V	V	V	V	V	V	V	V	V	-	V	V	V	V	V	V	V	V	V	V
	纖巧型抽油煙機 Slimline Cooker Hood	Miele	DA 3496 HP	-	-	-	-	-	-	-	-	-	-	-	-	-	V	-	-	-	-	-	-	-	-	-	-
	嵌入式洗衣乾衣機 Built-in Washer Dryer	Mia Cucina	BYWD85	V	V	V	V	V	V	V	V	V	V	V	V	V	-	V	V	V	V	V	V	V	V	V	V
	2合1洗衣乾衣機 2-in-1 Washer Dryer	Siemens	WK14D321HK	-	-	-	-	-	-	-	-	-	-	-	-	-	V	-	-	-	-	-	-	-	-	-	-
	嵌入式酒櫃 Built-under Wine Conditioning Unit	Miele	KWT 6321 UG	-	-	-	-	-	-	-	-	-	-	-	-	-	V	-	-	-	-	-	-	-	-	-	-
	煤氣熱水爐 Gas Water Heater	TGC	TRJW222TFQL	-	-	-	-	-	-	-	-	-	-	-	-	-	V	-	-	-	-	-	-	-	-	-	-
抽氣扇 Exhaust Fan	Panasonic	FV-15WH307	-	-	-	-	-	-	-	-	-	-	-	-	-	V	-	-	-	-	-	-	-	-	-	-	

- 備註：1. 上表 "V" 代表「提供」  
 2. 上表 "-" 代表「不提供」  
 3. 賣方承諾如該期數中沒有安裝指明的品牌名稱或產品型號的升降機或設備，便會安裝品質相若的升降機或設備。  
 4. 不設4樓、13樓及14樓。

- Notes : 1. The symbol "V" as shown in the above table denotes "Provided"  
 2. The symbol "-" as shown in the above table denotes "Not provided"  
 3. The vendor undertakes that if lifts or appliances of the specified brand name or model number are not installed in the phase, lifts or appliances of comparable quality will be installed.  
 4. 4/F, 13/F and 14/F are omitted.



## 22. 裝置、裝修物料及設備 FITTINGS, FINISHES AND APPLIANCES

### 6. 設備說明 Appliances Schedule

位置 Location	設備 Appliances	品牌 Brand	型號 Model No.	第3座 Tower 3																			
				地下 G/F					高層地下 UG/F							1樓 1/F							
				單位 Flat																			
				03, 05, 06, 07, 08, 09, 21	10, 16, 19	11, 15, 20	17	12, 18	01	03, 05, 06, 07, 08, 09, 21	26, 27	10, 16, 19	11, 15	17	12, 18, 20	23, 25	01	03, 05, 06, 07, 08, 09, 21, 26, 27	10, 16, 19	11, 15	17	12, 18, 20, 23, 25	
客廳、飯廳及門廳 Living Room, Dining Room and Foyer	分體機室內機 Single Split Type Indoor Unit	Panasonic	CS-LE12SKA	1	-	1	1	1	1	1	-	-	1	1	1	-	1	1	-	1	1	1	
	多聯型分體機室內機 Multi Split Type Indoor Unit	Panasonic	CS-Z42TKEW	-	1	-	-	-	-	-	-	1	-	-	-	-	-	-	1	-	-	-	
主人睡房 Master Bedroom	分體機室內機 Single Split Type Indoor Unit	Panasonic	CS-LE9SKA	1	-	-	1	-	-	1	-	-	-	1	-	-	-	1	-	-	1	-	
	分體機室內機 Single Split Type Indoor Unit	Panasonic	CS-V9RWA	-	-	-	-	1	-	-	-	-	-	-	1	-	-	-	-	-	-	1	
	分體機室內機 Single Split Type Indoor Unit	Panasonic	CS-LE12SKA	-	1	-	-	-	1	-	-	1	-	-	-	-	1	-	1	-	-	-	
睡房 2 Bedroom 2	多聯型分體機室內機 Multi Split Type Indoor Unit	Panasonic	CS-Z25TKEW	-	1	-	-	-	-	-	-	1	-	-	-	-	-	-	1	-	-	-	
	分體機室內機 Single Split Type Indoor Unit	Panasonic	CS-LE9SKA	-	-	-	-	-	1	-	-	-	-	-	-	-	1	-	-	-	-	-	
衣帽間 Walk-in Closet	分體機室內機 Single Split Type Indoor Unit	Panasonic	CS-V9RWA	-	-	-	-	1	-	-	-	-	-	-	1	-	-	-	-	-	-	1	
	分體機室內機 Single Split Type Indoor Unit	Panasonic	CS-LE9SKA	-	-	-	1	-	-	-	-	-	-	1	-	-	-	-	-	-	1	-	

備註：1. 上表“-”代表「不提供」  
2. 賣方承諾如該期數中沒有安裝指明的品牌名稱或產品型號的升降機或設備，便會安裝品質相若的升降機或設備。

Notes : 1. The symbol “-” as shown in the above table denotes “Not provided”  
2. The vendor undertakes that if lifts or appliances of the specified brand name or model number are not installed in the phase, lifts or appliances of comparable quality will be installed.



## 22. 裝置、裝修物料及設備 FITTINGS, FINISHES AND APPLIANCES

### 6. 設備說明 Appliances Schedule

位置 Location	設備 Appliances	品牌 Brand	型號 Model No.	第3座 Tower 3																			
				地下 G/F					高層地下 UG/F							1樓 1/F							
				單位 Flat																			
				03, 05, 06, 07, 08, 09, 21	10, 16, 19	11, 15, 20	17	12, 18	01	03, 05, 06, 07, 08, 09, 21	26, 27	10, 16, 19	11, 15	17	12, 18, 20	23, 25	01	03, 05, 06, 07, 08, 09, 21, 26, 27	10, 16, 19	11, 15	17	12, 18, 20, 23, 25	
儲物室 Store Room	分體機室內機 Single Split Type Indoor Unit	Panasonic	CS-LE9SKA	-	-	-	-	-	1	-	-	-	-	-	-	-	1	-	-	-	-		
露台 / 露台底 Balcony / Under balcony	分體機室外機 Single Split Type Outdoor Unit	Panasonic	CU-LE9SKA	-	-	-	-	-	-	1	-	-	-	1	-	-	1	1	-	-	1		
	分體機室外機 Single Split Type Outdoor Unit	Panasonic	CU-LE12SKA	-	-	-	-	-	-	1	-	1	1	1	-	1	1	1	1	1	1		
	分體機室外機 Single Split Type Outdoor Unit	Panasonic	CU-V9RWA	-	-	-	-	-	-	-	-	-	-	2	-	-	-	-	-	-	2		
冷氣機平台 A/C Platform outside	分體機室外機 Single Split Type Outdoor Unit	Panasonic	CU-LE9SKA	-	-	-	-	-	1	-	-	-	-	1	-	-	1	-	-	-	1		
	分體機室外機 Single Split Type Outdoor Unit	Panasonic	CU-LE12SKA	-	-	-	-	-	1	-	-	-	-	-	-	1	-	-	-	-	-		
	多聯型分體機室外機 Multi Split Type Outdoor Unit	Panasonic	CU-4E23PBE	-	1	-	-	-	-	-	-	1	-	-	-	-	-	-	1	-	-		
私人花園 Private Garden	分體機室外機 Single Split Type Outdoor Unit	Panasonic	CU-LE9SKA	1	-	-	2	-	1	-	1	-	-	-	-	-	-	-	-	-	-		
	分體機室外機 Single Split Type Outdoor Unit	Panasonic	CU-LE12SKA	1	1	1	1	1	1	-	1	-	-	-	-	1	-	-	-	-	-		
	分體機室外機 Single Split Type Outdoor Unit	Panasonic	CU-V9RWA	-	-	-	-	2	-	-	-	-	-	-	-	2	-	-	-	-	-		

備註：1. 上表“-”代表「不提供」  
2. 賣方承諾如該期數中沒有安裝指明的品牌名稱或產品型號的升降機或設備，便會安裝品質相若的升降機或設備。

Notes : 1. The symbol “-” as shown in the above table denotes “Not provided”  
2. The vendor undertakes that if lifts or appliances of the specified brand name or model number are not installed in the phase, lifts or appliances of comparable quality will be installed.

## 22. 裝置、裝修物料及設備 FITTINGS, FINISHES AND APPLIANCES

### 6. 設備說明 Appliances Schedule

位置 Location	設備 Appliances	品牌 Brand	型號 Model No.	第3座 Tower 3											
				2樓-18樓 2/F-18/F						19樓 19/F					
				單位 Flat											
				01	02, 10, 16, 19	03, 05, 06, 07, 08, 09, 21, 26, 27	11, 15	17	12, 18, 20, 22, 23, 25	01	02	03, 05, 06, 07, 08, 09, 21, 26, 27	10	11	22, 23, 25
客廳、飯廳及門廳 Living Room, Dining Room and Foyer	分體機室內機 Single Split Type Indoor Unit	Panasonic	CS-YE18UKA1	-	-	-	-	-	-	-	-	-	-	1	-
	分體機室內機 Single Split Type Indoor Unit	Panasonic	CS-LE12SKA	1	-	1	1	1	1	1	-	1	-	-	1
	多聯型分體機室內機 Multi Split Type Indoor Unit	Panasonic	CS-Z50TKEW	-	-	-	-	-	-	-	-	-	2	1	-
	多聯型分體機室內機 Multi Split Type Indoor Unit	Panasonic	CS-Z42TKEW	-	1	-	-	-	-	-	1	-	-	-	-
主人睡房 Master Bedroom	分體機室內機 Single Split Type Indoor Unit	Panasonic	CS-LE9SKA	-	-	1	-	1	-	-	-	1	-	-	-
	多聯型分體機室內機 Multi Split Type Indoor Unit	Panasonic	CS-Z50TKEW	-	-	-	-	-	-	-	-	-	-	1	-
	分體機室內機 Single Split Type Indoor Unit	Panasonic	CS-V9RWA	-	-	-	-	-	1	-	-	-	-	-	1
	分體機室內機 Single Split Type Indoor Unit	Panasonic	CS-LE12SKA	1	1	-	-	-	-	1	1	-	-	-	-
	分體機室內機 Single Split Type Indoor Unit	Panasonic	CS-YE18UKA1	-	-	-	-	-	-	-	-	-	1	-	-

備註：1. 上表“-”代表「不提供」  
2. 賣方承諾如該期數中沒有安裝指明的品牌名稱或產品型號的升降機或設備，便會安裝品質相若的升降機或設備。  
3. 不設4樓、13樓及14樓。

Notes: 1. The symbol “-” as shown in the above table denotes “Not provided”  
2. The vendor undertakes that if lifts or appliances of the specified brand name or model number are not installed in the phase, lifts or appliances of comparable quality will be installed.  
3. 4/F, 13/F and 14/F are omitted.

## 22. 裝置、裝修物料及設備 FITTINGS, FINISHES AND APPLIANCES

### 6. 設備說明 Appliances Schedule

位置 Location	設備 Appliances	品牌 Brand	型號 Model No.	第3座 Tower 3											
				2樓-18樓 2/F-18/F						19樓 19/F					
				單位 Flat											
				01	02, 10, 16, 19	03, 05, 06, 07, 08, 09, 21, 26, 27	11, 15	17	12, 18, 20, 22, 23, 25	01	02	03, 05, 06, 07, 08, 09, 21, 26, 27	10	11	22, 23, 25
睡房 2 Bedroom 2	多聯型分體機室內機 Multi Split Type Indoor Unit	Panasonic	CS-Z25TKEW	-	1	-	-	-	-	-	1	-	-	-	
	分體機室內機 Single Split Type Indoor Unit	Panasonic	CS-LE9SKA	1	-	-	-	-	-	1	-	-	-	-	
	分體機室內機 Single Split Type Indoor Unit	Panasonic	CS-LE12SKA	-	-	-	-	-	-	-	-	-	1	-	
	多聯型分體機室內機 Multi Split Type Indoor Unit	Panasonic	CS-Z42TKEW	-	-	-	-	-	-	-	-	-	1	-	
睡房 3 Bedroom 3	分體機室內機 Single Split Type Indoor Unit	Panasonic	CS-LE12SKA	-	-	-	-	-	-	-	-	-	1	-	
	多聯型分體機室內機 Multi Split Type Indoor Unit	Panasonic	CS-Z25TKEW	-	-	-	-	-	-	-	-	-	1	-	
睡房 4 Bedroom 4	多聯型分體機室內機 Multi Split Type Indoor Unit	Panasonic	CS-Z25TKEW	-	-	-	-	-	-	-	-	-	1	-	
衣帽間 Walk-in Closet	分體機室內機 Single Split Type Indoor Unit	Panasonic	CS-V9RWA	-	-	-	-	-	1	-	-	-	-	1	
	分體機室內機 Single Split Type Indoor Unit	Panasonic	CS-LE9SKA	-	-	-	-	1	-	-	-	-	-	-	
	多聯型分體機室內機 Multi Split Type Indoor Unit	Panasonic	CS-Z25TKEW	-	-	-	-	-	-	-	-	-	1	-	

備註：1. 上表“-”代表「不提供」  
2. 賣方承諾如該期數中沒有安裝指明的品牌名稱或產品型號的升降機或設備，便會安裝品質相若的升降機或設備。  
3. 不設4樓、13樓及14樓。

Notes: 1. The symbol “-” as shown in the above table denotes “Not provided”  
2. The vendor undertakes that if lifts or appliances of the specified brand name or model number are not installed in the phase, lifts or appliances of comparable quality will be installed.  
3. 4/F, 13/F and 14/F are omitted.

## 22. 裝置、裝修物料及設備 FITTINGS, FINISHES AND APPLIANCES

### 6. 設備說明 Appliances Schedule

位置 Location	設備 Appliances	品牌 Brand	型號 Model No.	第3座 Tower 3											
				2樓-18樓 2/F-18/F						19樓 19/F					
				單位 Flat											
				01	02, 10, 16, 19	03, 05, 06, 07, 08, 09, 21, 26, 27	11, 15	17	12, 18, 20, 22, 23, 25	01	02	03, 05, 06, 07, 08, 09, 21, 26, 27	10	11	22, 23, 25
工作間 Utility Room	多聯型分體機室內機 Multi Split Type Indoor Unit	Panasonic	CS-Z25TKEW	-	-	-	-	-	-	-	-	-	1	1	-
儲物室 Store Room	分體機室內機 Single Split Type Indoor Unit	Panasonic	CS-LE9SKA	1	-	-	-	-	-	1	-	-	-	-	-
露台 / 露台底 Balcony / Under balcony	分體機室外機 Single Split Type Outdoor Unit	Panasonic	CU-LE9SKA	1	-	1	-	1	-	1	-	1	-	-	-
	分體機室外機 Single Split Type Outdoor Unit	Panasonic	CU-LE12SKA	1	1	1	1	1	1	1	1	1	-	2	1
	分體機室外機 Single Split Type Outdoor Unit	Panasonic	CU-V9RWA	-	-	-	-	-	2	-	-	-	-	-	2
冷氣機平台 A/C Platform outside	分體機室外機 Single Split Type Outdoor Unit	Panasonic	CU-LE9SKA	1	-	-	-	1	-	1	-	-	-	-	-
	分體機室外機 Single Split Type Outdoor Unit	Panasonic	CU-LE12SKA	1	-	-	-	-	-	1	-	-	-	-	-
	分體機室外機 Single Split Type Outdoor Unit	Panasonic	CU-YE18UKA1	-	-	-	-	-	-	-	-	-	1	1	-
	多聯型分體機室外機 Multi Split Type Outdoor Unit	Panasonic	CU-4E23PBE	-	1	-	-	-	-	-	1	-	1	-	-
	多聯型分體機室外機 Multi Split Type Outdoor Unit	Panasonic	CU-5E34PBE	-	-	-	-	-	-	-	-	-	-	2	-
私人平台 Private Flatroof	多聯型分體機室外機 Multi Split Type Outdoor Unit	Panasonic	CU-5E34PBE	-	-	-	-	-	-	-	-	-	2	-	-

備註：1. 上表“-”代表「不提供」  
2. 賣方承諾如該期數中沒有安裝指明的品牌名稱或產品型號的升降機或設備，便會安裝品質相若的升降機或設備。  
3. 不設4樓、13樓及14樓。

Notes: 1. The symbol “-” as shown in the above table denotes “Not provided”  
2. The vendor undertakes that if lifts or appliances of the specified brand name or model number are not installed in the phase, lifts or appliances of comparable quality will be installed.  
3. 4/F, 13/F and 14/F are omitted.

## 22. 裝置、裝修物料及設備 FITTINGS, FINISHES AND APPLIANCES

### 6. 設備說明 Appliances Schedule

位置 Location	設備 Appliances	品牌 Brand	型號 Model No.	第5座 Tower 5															
				高層地下 UG/F				1樓 1/F				2樓-18樓 2/F-18/F				19樓 19/F			
				單位 Flat															
				01, 09, 16	02	06	07, 08, 10, 11, 12, 15	01, 09, 16	02	06, 07	08, 10, 11, 12, 15	01, 03, 09, 16	02	05, 06, 07	08, 10, 11, 12, 15	01	05, 06, 07	08, 10, 11, 12, 15	09, 16
客廳、飯廳及門廳 Living Room, Dining Room and Foyer	分體機室內機 Single Split Type Indoor Unit	Panasonic	CS-YE18UKA1	-	-	-	-	-	-	-	-	-	-	-	-	2	-	-	-
	分體機室內機 Single Split Type Indoor Unit	Panasonic	CS-LE12SKA	-	1	1	1	-	1	1	1	-	1	1	1	-	1	1	-
	多聯型分體機室內機 Multi Split Type Indoor Unit	Panasonic	CS-Z42TKEW	1	-	-	-	1	-	-	-	1	-	-	-	-	-	-	1
主人睡房 Master Bedroom	分體機室內機 Single Split Type Indoor Unit	Panasonic	CS-V9RWA	-	1	-	-	-	1	-	-	-	1	-	-	-	-	-	-
	分體機室內機 Single Split Type Indoor Unit	Panasonic	CS-LE12SKA	1	-	-	-	1	-	-	-	1	-	-	-	-	-	-	1
	分體機室內機 Single Split Type Indoor Unit	Panasonic	CS-LE9SKA	-	-	1	-	-	-	1	-	-	-	1	-	-	1	-	-
	分體機室內機 Single Split Type Indoor Unit	Panasonic	CS-YE18UKA1	-	-	-	-	-	-	-	-	-	-	-	-	1	-	-	-
睡房 2 Bedroom 2	多聯型分體機室內機 Multi Split Type Indoor Unit	Panasonic	CS-Z25TKEW	1	-	-	-	1	-	-	-	1	-	-	-	-	-	-	1
	多聯型分體機室內機 Multi Split Type Indoor Unit	Panasonic	CS-Z42TKEW	-	-	-	-	-	-	-	-	-	-	-	-	1	-	-	-
睡房 3 Bedroom 3	多聯型分體機室內機 Multi Split Type Indoor Unit	Panasonic	CS-Z42TKEW	-	-	-	-	-	-	-	-	-	-	-	-	1	-	-	-

備註：1. 上表“-”代表「不提供」

2. 賣方承諾如該期數中沒有安裝指明的品牌名稱或產品型號的升降機或設備，便會安裝品質相若的升降機或設備。

3. 不設4樓、13樓及14樓。

Notes: 1. The symbol “-” as shown in the above table denotes “Not provided”

2. The vendor undertakes that if lifts or appliances of the specified brand name or model number are not installed in the phase, lifts or appliances of comparable quality will be installed.

3. 4/F, 13/F and 14/F are omitted.

## 22. 裝置、裝修物料及設備 FITTINGS, FINISHES AND APPLIANCES

### 6. 設備說明 Appliances Schedule

位置 Location	設備 Appliances	品牌 Brand	型號 Model No.	第5座 Tower 5															
				高層地下 UG/F				1樓 1/F			2樓-18樓 2/F-18/F				19樓 19/F				
				單位 Flat															
				01, 09, 16	02	06	07, 08, 10, 11, 12, 15	01, 09, 16	02	06, 07	08, 10, 11, 12, 15	01, 03, 09, 16	02	05, 06, 07	08, 10, 11, 12, 15	01	05, 06, 07	08, 10, 11, 12, 15	09, 16
衣帽間 Walk-in Closet	分體機室內機 Single Split Type Indoor Unit	Panasonic	CS-V9RWA	-	1	-	-	-	1	-	-	-	-	1	-	-	-	-	
工作間 Utility Room	分體機室內機 Single Split Type Indoor Unit	Panasonic	CS-LE9SKA	-	-	-	-	-	-	-	-	-	-	-	-	1	-	-	
露台 / 露台底 Balcony / Under balcony	分體機室外機 Single Split Type Outdoor Unit	Panasonic	CU-LE9SKA	-	-	-	-	-	-	1	-	-	-	1	-	-	1	-	
	分體機室外機 Single Split Type Outdoor Unit	Panasonic	CU-LE12SKA	-	-	-	-	1	1	1	1	1	1	1	1	-	1	1	
	分體機室外機 Single Split Type Outdoor Unit	Panasonic	CU-V9RWA	-	-	-	-	-	2	-	-	-	2	-	-	-	-	-	
冷氣機平台 A/C Platform outside	多聯型分體機室外機 Multi Split Type Outdoor Unit	Panasonic	CU-4E23PBE	-	-	-	-	1	-	-	-	1	-	-	-	-	-	1	
	多聯型分體機室外機 Multi Split Type Outdoor Unit	Panasonic	CU-5E34PBE	-	-	-	-	-	-	-	-	-	-	-	-	1	-	-	
	分體機室外機 Single Split Type Outdoor Unit	Panasonic	CU-YE18UKA1	-	-	-	-	-	-	-	-	-	-	-	-	3	-	-	
	分體機室外機 Single Split Type Outdoor Unit	Panasonic	CU-LE9SKA	-	-	-	-	-	-	-	-	-	-	-	-	1	-	-	
鄰近樓梯高位 High level of adjacent staircase	多聯型分體機室外機 Multi Split Type Outdoor Unit	Panasonic	CU-4E23PBE	1	-	-	-	-	-	-	-	-	-	-	-	-	-	-	
私人花園 Private Garden	分體機室外機 Single Split Type Outdoor Unit	Panasonic	CU-LE9SKA	-	-	1	-	-	-	-	-	-	-	-	-	-	-	-	
	分體機室外機 Single Split Type Outdoor Unit	Panasonic	CU-LE12SKA	1	1	1	1	-	-	-	-	-	-	-	-	-	-	-	
	分體機室外機 Single Split Type Outdoor Unit	Panasonic	CU-V9RWA	-	2	-	-	-	-	-	-	-	-	-	-	-	-	-	

備註：1. 上表“-”代表「不提供」

2. 賣方承諾如該期數中沒有安裝指明的品牌名稱或產品型號的升降機或設備，便會安裝品質相若的升降機或設備。

3. 不設4樓、13樓及14樓。

Notes: 1. The symbol “-” as shown in the above table denotes “Not provided”

2. The vendor undertakes that if lifts or appliances of the specified brand name or model number are not installed in the phase, lifts or appliances of comparable quality will be installed.

3. 4/F, 13/F and 14/F are omitted.

## 22. 裝置、裝修物料及設備 FITTINGS, FINISHES AND APPLIANCES

住宅單位機電裝置位置及數量說明表 (第3座) Schedule for Location and Number of Mechanical and Electrical Provisions of Residential Units (Tower 3)

地下 G/F		單位 Flat															
位置 Location	描述 Description	03	05	06	07	08	09	10	11	12	15	16	17	18	19	20	21
大門入口 Main Entrance	門鈴按鈕 Door bell push button	1	1	1	1	1	1	1	1	1	1	1	1	1	1	1	1
客廳及飯廳 Living Room and Dining Room	電視及電台天線插座 TV and FM outlet	1	1	1	1	1	1	1	1	1	1	1	1	1	1	1	1
	電話插座 Telephone outlet	1	1	1	1	1	1	1	1	1	1	1	1	1	1	1	1
	數據插座 Data outlet	1	1	1	1	1	1	1	1	1	1	1	1	1	1	1	1
	單頭插座 Single socket outlet	2	2	2	2	2	2	2	2	2	2	-	2	2	-	2	2
	雙頭插座 Twin Socket outlet	2	2	2	2	2	2	2	2	2	2	3	2	2	3	2	2
	燈掣 Lighting switch	5	5	5	5	5	5	8	6	8	6	9	8	8	9	6	5
	雙極開關掣供冷氣機 Double pole switch for A/C unit	1	1	1	1	1	1	1	1	1	1	1	1	1	1	1	1
	雙極開關掣供抽氣扇 Double pole switch for ventilation fan	-	-	-	-	-	-	1	1	1	1	2	1	1	2	1	-
	雙極開關掣供電熱水爐 Double pole switch for electrical water heater	-	-	-	-	-	-	-	-	1	-	-	1	1	-	-	-
	雙極開關掣供煤氣熱水爐 Double pole switch for gas water heater	-	-	-	-	-	-	1	1	-	1	1	-	-	1	1	-
	USB 插頭配件 USB Socket Outlet	1	1	1	1	1	1	-	1	-	1	-	-	-	-	1	1
	微型斷路器配電箱 Miniature circuit breakers board	1	1	1	1	1	1	1	1	1	1	-	1	1	-	1	1
對講機 Door phone	1	1	1	1	1	1	1	1	1	1	1	1	1	1	1	1	
睡房 Master Bedroom	電視及電台天線插座 TV and FM outlet	1	1	1	1	1	1	1	-	1	-	1	1	1	1	-	1
	電話插座 Telephone outlet	1	1	1	1	1	1	1	-	1	-	1	1	1	1	-	1
	雙頭插座 Twin Socket Outlet	2	2	2	2	2	2	2	-	2	-	2	2	2	2	-	2
	燈掣 Lighting switch	3	3	3	3	3	3	1	-	1	-	1	2	2	1	-	3
	雙極開關掣供冷氣機 Double pole switch for A/C unit	1	1	1	1	1	1	1	-	1	-	1	1	1	1	-	1
	雙極開關掣供抽氣扇 Double pole switch for ventilation fan	1	1	1	1	1	1	-	-	-	-	-	-	-	-	-	1

## 22. 裝置、裝修物料及設備 FITTINGS, FINISHES AND APPLIANCES

住宅單位機電裝置位置及數量說明表 (第3座) Schedule for Location and Number of Mechanical and Electrical Provisions of Residential Units (Tower 3)

地下 G/F		單位 Flat															
位置 Location	描述 Description	03	05	06	07	08	09	10	11	12	15	16	17	18	19	20	21
睡房 2 Bedroom 2	電視及電台天線插座 TV and FM outlet	-	-	-	-	-	-	1	-	-	-	1	-	-	1	-	-
	電話插座 Telephone outlet	-	-	-	-	-	-	1	-	-	-	1	-	-	1	-	-
	單頭插座 Single socket outlet	-	-	-	-	-	-	1	-	-	-	1	-	-	1	-	-
	雙頭插座 Twin Socket outlet	-	-	-	-	-	-	1	-	-	-	1	-	-	1	-	-
	燈掣 Lighting switch	-	-	-	-	-	-	1	-	-	-	1	-	-	1	-	-
	雙極開關掣供冷氣機 Double pole switch for A/C unit	-	-	-	-	-	-	1	-	-	-	1	-	-	1	-	-
衣帽間 Walk-in Closet	單頭插座 Single socket outlet	-	-	-	-	-	-	-	-	1	-	-	1	1	-	-	-
	燈掣 Lighting switch	-	-	-	-	-	-	-	-	1	-	-	-	-	-	-	-
	雙極開關掣供冷氣機 Double pole switch for A/C unit	-	-	-	-	-	-	-	-	1	-	-	1	1	-	-	-
浴室 Bathroom	單頭插座 Single socket outlet	1	1	1	1	1	1	1	1	1	1	1	1	1	1	1	1
	電熱水爐接線位 Connection point for electrical water heater	-	-	-	-	-	-	-	-	1	-	-	1	1	-	-	-
	熱水爐溫度控制器 Water Heater Remote Control	1	1	1	1	1	1	1	1	1	1	1	1	1	1	1	1
	藍芽揚聲器接線位 Connection point for bluetooth speaker	1	1	1	1	1	1	1	1	1	1	1	1	1	1	1	1
	抽氣扇接線位 Connection Point for Exhaust Fan	1	1	1	1	1	1	1	1	1	1	1	1	1	1	1	1



## 22. 裝置、裝修物料及設備 FITTINGS, FINISHES AND APPLIANCES

住宅單位機電裝置位置及數量說明表 (第3座) Schedule for Location and Number of Mechanical and Electrical Provisions of Residential Units (Tower 3)

地下 G/F		單位 Flat																
位置 Location	描述 Description	03	05	06	07	08	09	10	11	12	15	16	17	18	19	20	21	
開放式廚房 / 廚房 Open Kitchen / Enclosed Kitchen	單頭插座 Single socket outlet	1	1	1	1	1	1	1	1	1	1	3	1	1	3	1	1	
	雙頭插座 Twin socket outlet	1	1	1	1	1	1	1	1	1	1	1	1	1	1	1	1	
	雙極開關掣供電磁爐 Double pole switch for induction cooker	-	-	-	-	-	-	-	1	-	1	-	-	-	-	1	-	
	門鈴 Door Bell	1	1	1	1	1	1	1	1	1	1	1	1	1	1	1	1	
	洗衣機來水接駁位 Water points for washing machine	1	1	1	1	1	1	1	1	1	1	1	1	1	1	1	1	
	洗衣機去水接駁位 Drain points for washing machine	1	1	1	1	1	1	1	1	1	1	1	1	1	1	1	1	
	微型斷路器配電箱 Miniature circuit breakers board	-	-	-	-	-	-	-	-	-	-	-	1	-	-	1	-	-
	抽油煙機接線位 Connection point for Cookerhood	1	1	1	1	1	1	1	1	1	1	1	1	1	1	1	1	
	煤氣爐接線位 Connection point for gas water heater	-	-	-	-	-	-	-	-	-	-	-	1	-	-	1	-	-
	抽氣扇接線位 Connection Point for Exhaust Fan	-	-	-	-	-	-	-	-	-	-	-	1	-	-	1	-	-
	煤氣煮食爐接線位 Connection point for gas cooker hob	1	1	1	1	1	1	1	1	-	1	-	2	1	1	2	-	1
私人花園 Private Garden	防水單頭插座 Weatherproof single socket outlet	2	2	2	2	2	2	2	2	2	2	2	2	2	2	2	2	
	煤氣熱水爐接線位 Connection point for Gas Water Heater	1	1	1	1	1	1	1	1	-	1	-	-	-	-	1	1	
	室外冷氣機開關掣 Isolator for outdoor A/C Unit	2	2	2	2	2	2	1	1	3	1	1	3	3	1	1	2	
冷氣機平台 A/C Platform	室外冷氣機開關掣 Isolator for outdoor A/C Unit	-	-	-	-	-	-	1	-	-	-	1	-	-	1	-	-	

## 22. 裝置、裝修物料及設備 FITTINGS, FINISHES AND APPLIANCES

住宅單位機電裝置位置及數量說明表 (第3座) Schedule for Location and Number of Mechanical and Electrical Provisions of Residential Units (Tower 3)

高層地下 UG/F		單位 Flat																					
位置 Location	描述 Description	01	03	05	06	07	08	09	10	11	12	15	16	17	18	19	20	21	23	25	26	27	
大門入口 Main Entrance	門鈴按鈕 Door bell push button	1	1	1	1	1	1	1	1	1	1	1	1	1	1	1	1	1	1	1	1	1	
客廳及飯廳 Living Room and Dining Room	電視及電台天線插座 TV and FM outlet	1	1	1	1	1	1	1	1	1	1	1	1	1	1	1	1	1	1	1	1	1	
	電話插座 Telephone outlet	1	1	1	1	1	1	1	1	1	1	1	1	1	1	1	1	1	1	1	1	1	
	數據插座 Data outlet	1	1	1	1	1	1	1	1	1	1	1	1	1	1	1	1	1	1	1	1	1	
	單頭插座 Single socket outlet	-	2	2	2	2	2	2	2	2	2	2	-	2	2	-	2	2	2	2	2	2	
	雙頭插座 Twin Socket outlet	3	2	2	2	2	2	2	2	2	2	2	3	2	2	3	2	2	2	2	2	2	
	燈掣 Lighting switch	9	5	5	5	5	5	5	8	6	8	6	9	8	8	9	8	5	7	7	5	5	
	雙極開關掣供冷氣機 Double pole switch for A/C unit	1	1	1	1	1	1	1	1	1	1	1	1	1	1	1	1	1	1	1	1	1	
	雙極開關掣供抽氣扇 Double pole switch for ventilation fan	2	-	-	-	-	-	-	1	1	1	1	2	1	1	2	1	-	1	1	-	-	
	雙極開關掣供電熱水爐 Double pole switch for electrical water heater	-	-	-	-	-	-	-	-	-	1	-	-	1	1	-	1	-	1	1	-	-	
	雙極開關掣供煤氣熱水爐 Double pole switch for gas water heater	1	-	-	-	-	-	-	1	1	-	1	1	-	-	1	-	-	-	-	-	-	
	USB 插頭配件 USB Socket Outlet	-	1	1	1	1	1	1	-	1	-	1	-	-	-	-	-	1	-	-	1	1	
	微型斷路器配電箱 Miniature circuit breakers board	-	1	1	1	1	1	1	1	1	1	1	-	1	1	-	1	1	1	1	1	1	
對講機 Door phone	1	1	1	1	1	1	1	1	1	1	1	1	1	1	1	1	1	1	1	1	1		
睡房 Master Bedroom	電視及電台天線插座 TV and FM outlet	1	1	1	1	1	1	1	-	1	-	1	1	1	1	1	1	1	1	-	-		
	電話插座 Telephone outlet	1	1	1	1	1	1	1	-	1	-	1	1	1	1	1	1	1	1	1	1	1	
	雙頭插座 Twin Socket Outlet	2	2	2	2	2	2	2	-	2	-	2	2	2	2	2	2	2	2	2	1	1	
	燈掣 Lighting switch	3	3	3	3	3	3	3	1	-	1	-	1	2	2	1	1	3	2	2	3	3	
	雙極開關掣供冷氣機 Double pole switch for A/C unit	1	1	1	1	1	1	1	1	-	1	-	1	1	1	1	1	1	1	1	1	1	
	雙極開關掣供抽氣扇 Double pole switch for ventilation fan	1	1	1	1	1	1	1	-	-	-	-	-	-	-	-	-	1	-	-	1	1	

## 22. 裝置、裝修物料及設備 FITTINGS, FINISHES AND APPLIANCES

住宅單位機電裝置位置及數量說明表 (第3座) Schedule for Location and Number of Mechanical and Electrical Provisions of Residential Units (Tower 3)

高層地下 UG/F		單位 Flat																					
位置 Location	描述 Description	01	03	05	06	07	08	09	10	11	12	15	16	17	18	19	20	21	23	25	26	27	
睡房 2 Bedroom 2	電視及電台天線插座 TV and FM outlet	1	-	-	-	-	-	-	1	-	-	-	1	-	-	1	-	-	-	-	-	-	
	電話插座 Telephone outlet	1	-	-	-	-	-	-	1	-	-	-	1	-	-	1	-	-	-	-	-	-	
	單頭插座 Single socket outlet	1	-	-	-	-	-	-	1	-	-	-	1	-	-	1	-	-	-	-	-	-	
	雙頭插座 Twin Socket outlet	1	-	-	-	-	-	-	1	-	-	-	1	-	-	1	-	-	-	-	-	-	
	燈掣 Lighting switch	1	-	-	-	-	-	-	1	-	-	-	1	-	-	1	-	-	-	-	-	-	
	雙極開關掣供冷氣機 Double pole switch for A/C unit	1	-	-	-	-	-	-	1	-	-	-	1	-	-	1	-	-	-	-	-	-	
衣帽間 Walk-in Closet	單頭插座 Single socket outlet	-	-	-	-	-	-	-	-	-	1	-	-	1	1	-	1	-	1	1	-	-	
	燈掣 Lighting switch	-	-	-	-	-	-	-	-	-	1	-	-	-	-	-	1	-	-	-	-	-	
	雙極開關掣供冷氣機 Double pole switch for A/C unit	-	-	-	-	-	-	-	-	-	1	-	-	1	1	-	1	-	1	1	-	-	
浴室 Bathroom	單頭插座 Single socket outlet	-	1	1	1	1	1	1	1	1	1	1	1	1	1	1	1	1	1	1	1	1	
	電熱水爐接線位 Connection point for electrical water heater	-	-	-	-	-	-	-	-	-	1	-	-	1	1	-	1	-	1	1	-	-	
	熱水爐溫度控制器 Water Heater Remote Control	-	1	1	1	1	1	1	1	1	1	1	1	1	1	1	1	1	1	1	1	1	
	藍芽揚聲器接線位 Connection point for bluetooth speaker	-	1	1	1	1	1	1	1	1	1	1	1	1	1	1	1	1	1	1	1	1	
	抽氣扇接線位 Connection Point for Exhaust Fan	-	1	1	1	1	1	1	1	1	1	1	1	1	1	1	1	1	1	1	1	1	
浴室 1 Bathroom 1	單頭插座 Single socket outlet	1	-	-	-	-	-	-	-	-	-	-	-	-	-	-	-	-	-	-	-	-	
	熱水爐溫度控制器 Water Heater Remote Control	1	-	-	-	-	-	-	-	-	-	-	-	-	-	-	-	-	-	-	-	-	
	藍芽揚聲器接線位 Connection point for bluetooth speaker	1	-	-	-	-	-	-	-	-	-	-	-	-	-	-	-	-	-	-	-	-	
	抽氣扇接線位 Connection Point for Exhaust Fan	1	-	-	-	-	-	-	-	-	-	-	-	-	-	-	-	-	-	-	-	-	
浴室 2 Bathroom 2	單頭插座 Single socket outlet	1	-	-	-	-	-	-	-	-	-	-	-	-	-	-	-	-	-	-	-	-	
	熱水爐溫度控制器 Water Heater Remote Control	1	-	-	-	-	-	-	-	-	-	-	-	-	-	-	-	-	-	-	-	-	
	藍芽揚聲器接線位 Connection point for bluetooth speaker	1	-	-	-	-	-	-	-	-	-	-	-	-	-	-	-	-	-	-	-	-	
	抽氣扇接線位 Connection Point for Exhaust Fan	1	-	-	-	-	-	-	-	-	-	-	-	-	-	-	-	-	-	-	-	-	

## 22. 裝置、裝修物料及設備 FITTINGS, FINISHES AND APPLIANCES

住宅單位機電裝置位置及數量說明表 (第3座) Schedule for Location and Number of Mechanical and Electrical Provisions of Residential Units (Tower 3)

高層地下 UG/F		單位 Flat																				
位置 Location	描述 Description	01	03	05	06	07	08	09	10	11	12	15	16	17	18	19	20	21	23	25	26	27
開放式廚房 / 廚房 Open Kitchen / Enclosed Kitchen	單頭插座 Single socket outlet	3	1	1	1	1	1	1	1	1	1	1	3	1	1	3	1	1	1	1	1	1
	雙頭插座 Twin socket outlet	1	1	1	1	1	1	1	1	1	1	1	1	1	1	1	1	1	1	1	1	1
	雙極開關掣供電磁爐 Double pole switch for induction cooker	-	-	-	-	-	-	-	-	1	-	1	-	-	-	-	-	-	-	-	-	1
	門鈴 Door Bell	1	1	1	1	1	1	1	1	1	1	1	1	1	1	1	1	1	1	1	1	1
	洗衣機來水接駁位 Water points for washing machine	1	1	1	1	1	1	1	1	1	1	1	1	1	1	1	1	1	1	1	1	1
	洗衣機去水接駁位 Drain points for washing machine	1	1	1	1	1	1	1	1	1	1	1	1	1	1	1	1	1	1	1	1	1
	微型斷路器配電箱 Miniature circuit breakers board	1	-	-	-	-	-	-	-	-	-	-	1	-	-	1	-	-	-	-	-	-
	抽油煙機接線位 Connection point for Cookerhood	1	1	1	1	1	1	1	1	1	1	1	1	1	1	1	1	1	1	1	1	1
	煤氣爐接線位 Connection point for gas water heater	1	-	-	-	-	-	-	-	-	-	-	1	-	-	1	-	-	-	-	-	-
	抽氣扇接線位 Connection Point for Exhaust Fan	1	-	-	-	-	-	-	-	-	-	-	1	-	-	1	-	-	-	-	-	-
	煤氣煮食爐接線位 Connection point for gas cooker hob	2	1	1	1	1	1	1	1	-	1	-	2	1	1	2	1	1	1	1	-	-
儲物室 Store Room	單頭插座 Single socket outlet	1	-	-	-	-	-	-	-	-	-	-	-	-	-	-	-	-	-	-	-	
	燈掣 Lighting switch	1	-	-	-	-	-	-	-	-	-	-	-	-	-	-	-	-	-	-	-	
	雙極開關掣供冷氣機 Double pole switch for A/C unit	1	-	-	-	-	-	-	-	-	-	-	-	-	-	-	-	-	-	-	-	
露台 Balcony	煤氣熱水爐接線位 Connection point for Gas Water Heater	-	1	1	1	1	1	1	1	1	-	1	-	-	-	-	-	1	-	-	-	
	室外冷氣機開關掣 Isolator for outdoor A/C Unit	-	2	2	2	2	2	2	1	1	3	1	1	2	3	1	3	2	-	-	-	-
私人花園 Private Garden	防水單頭插座 Weatherproof single socket outlet	2	-	-	-	-	-	-	-	-	-	-	-	-	-	-	-	-	2	2	2	2
	煤氣熱水爐接線位 Connection point for Gas Water Heater	1	-	-	-	-	-	-	-	-	-	-	-	-	-	-	-	-	-	-	1	1
	室外冷氣機開關掣 Isolator for outdoor A/C Unit	2	-	-	-	-	-	-	-	-	-	-	-	-	-	-	-	-	3	3	2	2
冷氣機平台 A/C Platform	室外冷氣機開關掣 Isolator for outdoor A/C Unit	2	-	-	-	-	-	-	1	-	-	-	1	1	-	1	-	-	-	-	-	

## 22. 裝置、裝修物料及設備 FITTINGS, FINISHES AND APPLIANCES

住宅單位機電裝置位置及數量說明表 (第3座) Schedule for Location and Number of Mechanical and Electrical Provisions of Residential Units (Tower 3)

1樓 1/F		單位 Flat																					
位置 Location	描述 Description	01	03	05	06	07	08	09	10	11	12	15	16	17	18	19	20	21	23	25	26	27	
大門入口 Main Entrance	門鈴按鈕 Door bell push button	1	1	1	1	1	1	1	1	1	1	1	1	1	1	1	1	1	1	1	1	1	
客廳及飯廳 Living Room and Dining Room	電視及電台天線插座 TV and FM outlet	1	1	1	1	1	1	1	1	1	1	1	1	1	1	1	1	1	1	1	1	1	
	電話插座 Telephone outlet	1	1	1	1	1	1	1	1	1	1	1	1	1	1	1	1	1	1	1	1	1	
	數據插座 Data outlet	1	1	1	1	1	1	1	1	1	1	1	1	1	1	1	1	1	1	1	1	1	
	單頭插座 Single socket outlet	-	2	2	2	2	2	2	2	2	2	2	-	2	2	-	2	2	2	2	2	2	
	雙頭插座 Twin Socket outlet	3	2	2	2	2	2	2	2	2	2	2	3	2	2	3	2	2	2	2	2	2	
	燈掣 Lighting switch	9	5	5	5	5	5	5	8	6	8	6	9	8	8	9	8	5	7	7	5	5	
	雙極開關掣供冷氣機 Double pole switch for A/C unit	1	1	1	1	1	1	1	1	1	1	1	1	1	1	1	1	1	1	1	1	1	
	雙極開關掣供抽氣扇 Double pole switch for ventilation fan	2	-	-	-	-	-	-	1	1	1	1	2	1	1	2	1	-	1	1	-	-	
	雙極開關掣供電熱水爐 Double pole switch for electrical water heater	-	-	-	-	-	-	-	-	-	1	-	-	1	1	-	1	-	1	1	-	-	
	雙極開關掣供煤氣熱水爐 Double pole switch for gas water heater	1	-	-	-	-	-	-	1	1	-	1	1	-	-	1	-	-	-	-	-	-	
	USB 插頭配件 USB Socket Outlet	-	1	1	1	1	1	1	-	1	-	1	-	-	-	-	-	1	-	-	1	1	
	微型斷路器配電箱 Miniature circuit breakers board	-	1	1	1	1	1	1	1	1	1	1	-	1	1	-	1	1	1	1	1	1	
對講機 Door phone	1	1	1	1	1	1	1	1	1	1	1	1	1	1	1	1	1	1	1	1	1		
睡房 Master Bedroom	電視及電台天線插座 TV and FM outlet	1	1	1	1	1	1	1	-	1	-	1	1	1	1	1	1	1	1	1	1		
	電話插座 Telephone outlet	1	1	1	1	1	1	1	1	-	1	-	1	1	1	1	1	1	1	1	1	1	
	雙頭插座 Twin Socket Outlet	2	2	2	2	2	2	2	-	2	-	2	2	2	2	2	2	2	2	2	2		
	燈掣 Lighting switch	3	3	3	3	3	3	3	1	-	1	-	1	2	2	1	1	3	2	2	3	3	
	雙極開關掣供冷氣機 Double pole switch for A/C unit	1	1	1	1	1	1	1	1	-	1	-	1	1	1	1	1	1	1	1	1	1	
	雙極開關掣供抽氣扇 Double pole switch for ventilation fan	1	1	1	1	1	1	1	-	-	-	-	-	-	-	-	-	1	-	-	1	1	

## 22. 裝置、裝修物料及設備 FITTINGS, FINISHES AND APPLIANCES

住宅單位機電裝置位置及數量說明表 (第3座) Schedule for Location and Number of Mechanical and Electrical Provisions of Residential Units (Tower 3)

1樓 1/F		單位 Flat																					
位置 Location	描述 Description	01	03	05	06	07	08	09	10	11	12	15	16	17	18	19	20	21	23	25	26	27	
睡房 2 Bedroom 2	電視及電台天線插座 TV and FM outlet	1	-	-	-	-	-	-	1	-	-	-	1	-	-	1	-	-	-	-	-	-	
	電話插座 Telephone outlet	1	-	-	-	-	-	-	1	-	-	-	1	-	-	1	-	-	-	-	-	-	
	單頭插座 Single socket outlet	1	-	-	-	-	-	-	1	-	-	-	1	-	-	1	-	-	-	-	-	-	
	雙頭插座 Twin Socket outlet	1	-	-	-	-	-	-	1	-	-	-	1	-	-	1	-	-	-	-	-	-	
	燈掣 Lighting switch	1	-	-	-	-	-	-	1	-	-	-	1	-	-	1	-	-	-	-	-	-	
	雙極開關掣供冷氣機 Double pole switch for A/C unit	1	-	-	-	-	-	-	1	-	-	-	1	-	-	1	-	-	-	-	-	-	
衣帽間 Walk-in Closet	單頭插座 Single socket outlet	-	-	-	-	-	-	-	-	-	1	-	-	1	1	-	1	-	1	1	-	-	
	燈掣 Lighting switch	-	-	-	-	-	-	-	-	-	1	-	-	-	-	-	1	-	-	-	-	-	
	雙極開關掣供冷氣機 Double pole switch for A/C unit	-	-	-	-	-	-	-	-	-	1	-	-	1	1	-	1	-	1	1	-	-	
浴室 Bathroom	單頭插座 Single socket outlet	-	1	1	1	1	1	1	1	1	1	1	1	1	1	1	1	1	1	1	1	1	
	電熱水爐接線位 Connection point for electrical water heater	-	-	-	-	-	-	-	-	-	1	-	-	1	1	-	1	-	1	1	-	-	
	熱水爐溫度控制器 Water Heater Remote Control	-	1	1	1	1	1	1	1	1	1	1	1	1	1	1	1	1	1	1	1	1	
	藍芽揚聲器接線位 Connection point for bluetooth speaker	-	1	1	1	1	1	1	1	1	1	1	1	1	1	1	1	1	1	1	1	1	
	抽氣扇接線位 Connection Point for Exhaust Fan	-	1	1	1	1	1	1	1	1	1	1	1	1	1	1	1	1	1	1	1	1	
浴室 1 Bathroom 1	單頭插座 Single socket outlet	1	-	-	-	-	-	-	-	-	-	-	-	-	-	-	-	-	-	-	-	-	
	熱水爐溫度控制器 Water Heater Remote Control	1	-	-	-	-	-	-	-	-	-	-	-	-	-	-	-	-	-	-	-	-	
	藍芽揚聲器接線位 Connection point for bluetooth speaker	1	-	-	-	-	-	-	-	-	-	-	-	-	-	-	-	-	-	-	-	-	
	抽氣扇接線位 Connection Point for Exhaust Fan	1	-	-	-	-	-	-	-	-	-	-	-	-	-	-	-	-	-	-	-	-	
浴室 2 Bathroom 2	單頭插座 Single socket outlet	1	-	-	-	-	-	-	-	-	-	-	-	-	-	-	-	-	-	-	-	-	
	熱水爐溫度控制器 Water Heater Remote Control	1	-	-	-	-	-	-	-	-	-	-	-	-	-	-	-	-	-	-	-	-	
	藍芽揚聲器接線位 Connection point for bluetooth speaker	1	-	-	-	-	-	-	-	-	-	-	-	-	-	-	-	-	-	-	-	-	
	抽氣扇接線位 Connection Point for Exhaust Fan	1	-	-	-	-	-	-	-	-	-	-	-	-	-	-	-	-	-	-	-	-	

## 22. 裝置、裝修物料及設備 FITTINGS, FINISHES AND APPLIANCES

住宅單位機電裝置位置及數量說明表 (第3座) Schedule for Location and Number of Mechanical and Electrical Provisions of Residential Units (Tower 3)

1樓 1/F		單位 Flat																						
位置 Location	描述 Description	01	03	05	06	07	08	09	10	11	12	15	16	17	18	19	20	21	23	25	26	27		
開放式廚房 / 廚房 Open Kitchen / Enclosed Kitchen	單頭插座 Single socket outlet	3	1	1	1	1	1	1	1	1	1	1	3	1	1	3	1	1	1	1	1	1		
	雙頭插座 Twin socket outlet	1	1	1	1	1	1	1	1	1	1	1	1	1	1	1	1	1	1	1	1	1		
	雙極開關掣供電磁爐 Double pole switch for induction cooker	-	-	-	-	-	-	-	-	-	1	-	1	-	-	-	-	-	-	-	-	1	1	
	門鈴 Door Bell	1	1	1	1	1	1	1	1	1	1	1	1	1	1	1	1	1	1	1	1	1	1	
	洗衣機來水接駁位 Water points for washing machine	1	1	1	1	1	1	1	1	1	1	1	1	1	1	1	1	1	1	1	1	1	1	
	洗衣機去水接駁位 Drain points for washing machine	1	1	1	1	1	1	1	1	1	1	1	1	1	1	1	1	1	1	1	1	1	1	1
	微型斷路器配電箱 Miniature circuit breakers board	1	-	-	-	-	-	-	-	-	-	-	-	1	-	-	1	-	-	-	-	-	-	
	抽油煙機接線位 Connection point for Cookerhood	1	1	1	1	1	1	1	1	1	1	1	1	1	1	1	1	1	1	1	1	1	1	
	煤氣爐接線位 Connection point for gas water heater	1	-	-	-	-	-	-	-	-	-	-	-	1	-	-	1	-	-	-	-	-	-	
	抽氣扇接線位 Connection Point for Exhaust Fan	1	-	-	-	-	-	-	-	-	-	-	-	1	-	-	1	-	-	-	-	-	-	
	煤氣煮食爐接線位 Connection point for gas cooker hob	2	1	1	1	1	1	1	1	1	-	1	-	2	1	1	2	1	1	1	1	-	-	
儲物室 Store Room	單頭插座 Single socket outlet	1	-	-	-	-	-	-	-	-	-	-	-	-	-	-	-	-	-	-	-	-		
	燈掣 Lighting switch	1	-	-	-	-	-	-	-	-	-	-	-	-	-	-	-	-	-	-	-	-		
	雙極開關掣供冷氣機 Double pole switch for A/C unit	1	-	-	-	-	-	-	-	-	-	-	-	-	-	-	-	-	-	-	-	-		
露台 Balcony	煤氣熱水爐接線位 Connection point for Gas Water Heater	1	1	1	1	1	1	1	1	1	-	1	-	-	-	-	-	1	-	-	1	1		
	室外冷氣機開關掣 Isolator for outdoor A/C Unit	2	2	2	2	2	2	2	1	1	3	1	1	2	3	1	3	2	3	3	2	2		
冷氣機平台 A/C Platform	室外冷氣機開關掣 Isolator for outdoor A/C Unit	2	-	-	-	-	-	-	1	-	-	-	1	1	-	1	-	-	-	-	-	-		

## 22. 裝置、裝修物料及設備 FITTINGS, FINISHES AND APPLIANCES

住宅單位機電裝置位置及數量說明表 (第3座) Schedule for Location and Number of Mechanical and Electrical Provisions of Residential Units (Tower 3)

2樓 -18樓 2/F-18/F		單位 Flat																						
位置 Location	描述 Description	01	02	03	05	06	07	08	09	10	11	12	15	16	17	18	19	20	21	22	23	25	26	27
大門入口 Main Entrance	門鈴按鈕 Door bell push button	1	1	1	1	1	1	1	1	1	1	1	1	1	1	1	1	1	1	1	1	1	1	1
客廳及飯廳 Living Room and Dining Room	電視及電台天線插座 TV and FM outlet	1	1	1	1	1	1	1	1	1	1	1	1	1	1	1	1	1	1	1	1	1	1	1
	電話插座 Telephone outlet	1	1	1	1	1	1	1	1	1	1	1	1	1	1	1	1	1	1	1	1	1	1	1
	數據插座 Data outlet	1	1	1	1	1	1	1	1	1	1	1	1	1	1	1	1	1	1	1	1	1	1	1
	單頭插座 Single socket outlet	-	-	2	2	2	2	2	2	2	2	2	2	-	2	2	-	2	2	2	2	2	2	2
	雙頭插座 Twin Socket outlet	3	3	2	2	2	2	2	2	2	2	2	2	3	2	2	3	2	2	2	2	2	2	2
	燈掣 Lighting switch	9	9	5	5	5	5	5	5	8	6	9	6	9	8	8	9	8	5	7	7	7	5	5
	雙極開關掣供冷氣機 Double pole switch for A/C unit	1	1	1	1	1	1	1	1	1	1	1	1	1	1	1	1	1	1	1	1	1	1	1
	雙極開關掣供抽氣扇 Double pole switch for ventilation fan	2	2	-	-	-	-	-	-	1	1	1	1	2	1	1	2	1	-	1	1	1	-	-
	雙極開關掣供電熱水爐 Double pole switch for electrical water heater	-	-	-	-	-	-	-	-	-	-	1	-	-	1	1	-	1	-	1	1	1	-	-
	雙極開關掣供煤氣熱水爐 Double pole switch for gas water heater	1	1	-	-	-	-	-	-	1	1	-	1	1	-	-	1	-	-	-	-	-	-	-
	USB 插頭配件 USB Socket Outlet	-	-	1	1	1	1	1	1	-	1	-	1	-	-	-	-	-	1	-	-	-	1	1
	微型斷路器配電箱 Miniature circuit breakers board	-	-	1	1	1	1	1	1	1	1	1	1	-	1	1	-	1	1	1	1	1	1	1
對講機 Door phone	1	1	1	1	1	1	1	1	1	1	1	1	1	1	1	1	1	1	1	1	1	1	1	
睡房 Master Bedroom	電視及電台天線插座 TV and FM outlet	1	1	1	1	1	1	1	1	-	1	-	1	1	1	1	1	1	1	1	1	1	1	
	電話插座 Telephone outlet	1	1	1	1	1	1	1	1	1	-	1	-	1	1	1	1	1	1	1	1	1	1	1
	雙頭插座 Twin Socket Outlet	2	2	2	2	2	2	2	2	2	-	2	-	2	2	2	2	2	2	2	2	2	2	2
	燈掣 Lighting switch	3	1	3	3	3	3	3	3	1	-	1	-	1	2	2	1	1	3	2	2	2	3	3
	雙極開關掣供冷氣機 Double pole switch for A/C unit	1	1	1	1	1	1	1	1	1	-	1	-	1	1	1	1	1	1	1	1	1	1	1
	雙極開關掣供抽氣扇 Double pole switch for ventilation fan	1	-	1	1	1	1	1	1	-	-	-	-	-	-	-	-	-	1	-	-	-	1	1

備註：不設4樓、13樓及14樓。  
Note: 4/F, 13/F and 14/F are omitted.



## 22. 裝置、裝修物料及設備 FITTINGS, FINISHES AND APPLIANCES

住宅單位機電裝置位置及數量說明表 (第3座) Schedule for Location and Number of Mechanical and Electrical Provisions of Residential Units (Tower 3)

2樓 -18樓 2/F-18/F		單位 Flat																							
位置 Location	描述 Description	01	02	03	05	06	07	08	09	10	11	12	15	16	17	18	19	20	21	22	23	25	26	27	
睡房 2 Bedroom 2	電視及電台天線插座 TV and FM outlet	1	1	-	-	-	-	-	-	1	-	-	-	1	-	-	1	-	-	-	-	-	-	-	
	電話插座 Telephone outlet	1	1	-	-	-	-	-	-	1	-	-	-	1	-	-	1	-	-	-	-	-	-	-	
	單頭插座 Single socket outlet	1	1	-	-	-	-	-	-	1	-	-	-	1	-	-	1	-	-	-	-	-	-	-	
	雙頭插座 Twin Socket outlet	1	1	-	-	-	-	-	-	1	-	-	-	1	-	-	1	-	-	-	-	-	-	-	
	燈掣 Lighting switch	1	1	-	-	-	-	-	-	1	-	-	-	1	-	-	1	-	-	-	-	-	-	-	
	雙極開關掣供冷氣機 Double pole switch for A/C unit	1	1	-	-	-	-	-	-	1	-	-	-	1	-	-	1	-	-	-	-	-	-	-	
衣帽間 Walk-in Closet	單頭插座 Single socket outlet	-	-	-	-	-	-	-	-	-	-	1	-	-	1	1	-	1	-	1	1	1	-	-	
	燈掣 Lighting switch	-	-	-	-	-	-	-	-	-	-	1	-	-	-	-	-	1	-	-	-	-	-	-	
	雙極開關掣供冷氣機 Double pole switch for A/C unit	-	-	-	-	-	-	-	-	-	-	1	-	-	1	1	-	1	-	1	1	1	-	-	
浴室 Bathroom	單頭插座 Single socket outlet	-	1	1	1	1	1	1	1	1	1	1	1	1	1	1	1	1	1	1	1	1	1	1	
	電熱水爐接線位 Connection point for electrical water heater	-	-	-	-	-	-	-	-	-	-	1	-	-	1	1	-	1	-	1	1	1	-	-	
	熱水爐溫度控制器 Water Heater Remote Control	-	1	1	1	1	1	1	1	1	1	1	1	1	1	1	1	1	1	1	1	1	1	1	
	藍芽揚聲器接線位 Connection point for bluetooth speaker	-	1	1	1	1	1	1	1	1	1	1	1	1	1	1	1	1	1	1	1	1	1	1	
	抽氣扇接線位 Connection Point for Exhaust Fan	-	1	1	1	1	1	1	1	1	1	1	1	1	1	1	1	1	1	1	1	1	1	1	
浴室 1 Bathroom 1	單頭插座 Single socket outlet	1	-	-	-	-	-	-	-	-	-	-	-	-	-	-	-	-	-	-	-	-	-	-	
	熱水爐溫度控制器 Water Heater Remote Control	1	-	-	-	-	-	-	-	-	-	-	-	-	-	-	-	-	-	-	-	-	-	-	
	藍芽揚聲器接線位 Connection point for bluetooth speaker	1	-	-	-	-	-	-	-	-	-	-	-	-	-	-	-	-	-	-	-	-	-	-	
	抽氣扇接線位 Connection Point for Exhaust Fan	1	-	-	-	-	-	-	-	-	-	-	-	-	-	-	-	-	-	-	-	-	-	-	
浴室 2 Bathroom 2	單頭插座 Single socket outlet	1	-	-	-	-	-	-	-	-	-	-	-	-	-	-	-	-	-	-	-	-	-	-	
	熱水爐溫度控制器 Water Heater Remote Control	1	-	-	-	-	-	-	-	-	-	-	-	-	-	-	-	-	-	-	-	-	-	-	
	藍芽揚聲器接線位 Connection point for bluetooth speaker	1	-	-	-	-	-	-	-	-	-	-	-	-	-	-	-	-	-	-	-	-	-	-	
	抽氣扇接線位 Connection Point for Exhaust Fan	1	-	-	-	-	-	-	-	-	-	-	-	-	-	-	-	-	-	-	-	-	-	-	

備註：不設4樓、13樓及14樓。

Note: 4/F, 13/F and 14/F are omitted.

## 22. 裝置、裝修物料及設備 FITTINGS, FINISHES AND APPLIANCES

住宅單位機電裝置位置及數量說明表 (第3座) Schedule for Location and Number of Mechanical and Electrical Provisions of Residential Units (Tower 3)

2樓 -18樓 2/F-18/F		單位 Flat																						
位置 Location	描述 Description	01	02	03	05	06	07	08	09	10	11	12	15	16	17	18	19	20	21	22	23	25	26	27
開放式廚房 / 廚房 Open Kitchen / Enclosed Kitchen	單頭插座 Single socket outlet	3	3	1	1	1	1	1	1	1	1	1	1	3	1	1	3	1	1	1	1	1	1	1
	雙頭插座 Twin socket outlet	1	1	1	1	1	1	1	1	1	1	1	1	1	1	1	1	1	1	1	1	1	1	1
	雙極開關掣供電磁爐 Double pole switch for induction cooker	-	-	-	-	-	-	-	-	-	1	-	1	-	-	-	-	-	-	-	-	-	1	1
	門鈴 Door Bell	1	1	1	1	1	1	1	1	1	1	1	1	1	1	1	1	1	1	1	1	1	1	1
	洗衣機來水接駁位 Water points for washing machine	1	1	1	1	1	1	1	1	1	1	1	1	1	1	1	1	1	1	1	1	1	1	1
	洗衣機去水接駁位 Drain points for washing machine	1	1	1	1	1	1	1	1	1	1	1	1	1	1	1	1	1	1	1	1	1	1	1
	微型斷路器配電箱 Miniature circuit breakers board	1	1	-	-	-	-	-	-	-	-	-	-	1	-	-	1	-	-	-	-	-	-	-
	抽油煙機接線位 Connection point for Cookerhood	1	1	1	1	1	1	1	1	1	1	1	1	1	1	1	1	1	1	1	1	1	1	1
	煤氣爐接線位 Connection point for gas water heater	1	1	-	-	-	-	-	-	-	-	-	-	1	-	-	1	-	-	-	-	-	-	-
	抽氣扇接線位 Connection Point for Exhaust Fan	1	1	-	-	-	-	-	-	-	-	-	-	1	-	-	1	-	-	-	-	-	-	-
	煤氣煮食爐接線位 Connection point for gas cooker hob	2	1	1	1	1	1	1	1	1	-	1	-	2	1	1	2	1	1	1	1	1	-	-
儲物室 Store Room	單頭插座 Single socket outlet	1	-	-	-	-	-	-	-	-	-	-	-	-	-	-	-	-	-	-	-	-	-	
	燈掣 Lighting switch	1	-	-	-	-	-	-	-	-	-	-	-	-	-	-	-	-	-	-	-	-	-	
	雙極開關掣供冷氣機 Double pole switch for A/C unit	1	-	-	-	-	-	-	-	-	-	-	-	-	-	-	-	-	-	-	-	-	-	
露台 Balcony	煤氣熱水爐接線位 Connection point for Gas Water Heater	1	-	1	1	1	1	1	1	1	-	1	-	-	-	-	-	1	-	-	-	1	1	
	室外冷氣機開關掣 Isolator for outdoor A/C Unit	2	1	2	2	2	2	2	2	1	1	3	1	1	2	3	1	3	2	3	3	3	2	2
冷氣機平台 A/C Platform	室外冷氣機開關掣 Isolator for outdoor A/C Unit	2	1	-	-	-	-	-	-	1	-	-	-	1	1	-	1	-	-	-	-	-	-	

備註：不設4樓、13樓及14樓。  
Note: 4/F, 13/F and 14/F are omitted.

## 22. 裝置、裝修物料及設備 FITTINGS, FINISHES AND APPLIANCES

住宅單位機電裝置位置及數量說明表 (第3座) Schedule for Location and Number of Mechanical and Electrical Provisions of Residential Units (Tower 3)

19樓 19/F		單位 Flat															
位置 Location	描述 Description	01	02	03	05	06	07	08	09	10	11	21	22	23	25	26	27
大門入口 Main Entrance	門鈴按鈕 Door bell push button	1	1	1	1	1	1	1	1	1	1	1	1	1	1	1	1
客廳及飯廳 Living Room and Dining Room	電視及電台天線插座 TV and FM outlet	1	1	1	1	1	1	1	1	1	1	1	1	1	1	1	1
	電話插座 Telephone outlet	1	1	1	1	1	1	1	1	1	1	1	1	1	1	1	1
	數據插座 Data outlet	1	1	1	1	1	1	1	1	1	1	1	1	1	1	1	1
	單頭插座 Single socket outlet	-	-	2	2	2	2	2	2	-	-	2	2	2	2	2	2
	雙頭插座 Twin Socket outlet	3	3	2	2	2	2	2	2	3	3	2	2	2	2	2	2
	燈掣 Lighting switch	9	9	5	5	5	5	5	5	10	9	5	7	7	7	5	5
	雙極開關掣供冷氣機 Double pole switch for A/C unit	1	1	1	1	1	1	1	1	2	2	1	1	1	1	1	1
	雙極開關掣供抽氣扇 Double pole switch for ventilation fan	2	2	-	-	-	-	-	-	2	2	-	1	1	1	-	-
	雙極開關掣供電熱水爐 Double pole switch for electrical water heater	-	-	-	-	-	-	-	-	-	-	-	1	1	1	-	-
	雙極開關掣供煤氣熱水爐 Double pole switch for gas water heater	1	1	-	-	-	-	-	-	2	2	-	-	-	-	-	-
	USB 插頭配件 USB Socket Outlet	-	-	1	1	1	1	1	1	-	-	1	-	-	-	1	1
	微型斷路器配電箱 Miniature circuit breakers board	-	-	1	1	1	1	1	1	-	-	1	1	1	1	1	1
對講機 Door phone	1	1	1	1	1	1	1	1	1	1	1	1	1	1	1	1	
睡房 Master Bedroom	電視及電台天線插座 TV and FM outlet	1	1	1	1	1	1	1	1	1	1	1	1	1	1	1	1
	電話插座 Telephone outlet	1	1	1	1	1	1	1	1	1	1	1	1	1	1	1	1
	雙頭插座 Twin Socket Outlet	2	2	2	2	2	2	2	2	2	2	2	2	2	2	2	2
	燈掣 Lighting switch	3	1	3	3	3	3	3	3	4	4	3	2	2	2	3	3
	雙極開關掣供冷氣機 Double pole switch for A/C unit	1	1	1	1	1	1	1	1	1	1	1	1	1	1	1	1
	雙極開關掣供抽氣扇 Double pole switch for ventilation fan	1	-	1	1	1	1	1	1	1	1	1	-	-	-	1	1

## 22. 裝置、裝修物料及設備 FITTINGS, FINISHES AND APPLIANCES

住宅單位機電裝置位置及數量說明表 (第3座) Schedule for Location and Number of Mechanical and Electrical Provisions of Residential Units (Tower 3)

19樓 19/F		單位 Flat															
位置 Location	描述 Description	01	02	03	05	06	07	08	09	10	11	21	22	23	25	26	27
睡房 2 Bedroom 2	電視及電台天線插座 TV and FM outlet	1	1	-	-	-	-	-	-	1	1	-	-	-	-	-	-
	電話插座 Telephone outlet	1	1	-	-	-	-	-	-	1	1	-	-	-	-	-	-
	單頭插座 Single socket outlet	1	1	-	-	-	-	-	-	1	1	-	-	-	-	-	-
	雙頭插座 Twin Socket outlet	1	1	-	-	-	-	-	-	1	1	-	-	-	-	-	-
	燈掣 Lighting switch	1	1	-	-	-	-	-	-	2	4	-	-	-	-	-	-
	雙極開關掣供冷氣機 Double pole switch for A/C unit	1	1	-	-	-	-	-	-	1	1	-	-	-	-	-	-
	雙極開關掣供抽氣扇 Double pole switch for ventilation fan	-	-	-	-	-	-	-	-	-	1	-	-	-	-	-	-
睡房 3 Bedroom 3	電視及電台天線插座 TV and FM outlet	-	-	-	-	-	-	-	-	1	1	-	-	-	-	-	-
	電話插座 Telephone outlet	-	-	-	-	-	-	-	-	1	1	-	-	-	-	-	-
	單頭插座 Single socket outlet	-	-	-	-	-	-	-	-	1	1	-	-	-	-	-	-
	雙頭插座 Twin Socket Outlet	-	-	-	-	-	-	-	-	1	1	-	-	-	-	-	-
	燈掣 Lighting switch	-	-	-	-	-	-	-	-	1	1	-	-	-	-	-	-
	雙極開關掣供冷氣機 Double pole switch for A/C unit	-	-	-	-	-	-	-	-	1	1	-	-	-	-	-	-
睡房 4 Bedroom 4	電視及電台天線插座 TV and FM outlet	-	-	-	-	-	-	-	-	1	-	-	-	-	-	-	-
	電話插座 Telephone outlet	-	-	-	-	-	-	-	-	1	-	-	-	-	-	-	-
	單頭插座 Single socket outlet	-	-	-	-	-	-	-	-	1	-	-	-	-	-	-	-
	雙頭插座 Twin Socket Outlet	-	-	-	-	-	-	-	-	1	-	-	-	-	-	-	-
	燈掣 Lighting switch	-	-	-	-	-	-	-	-	1	-	-	-	-	-	-	-
	雙極開關掣供冷氣機 Double pole switch for A/C unit	-	-	-	-	-	-	-	-	1	-	-	-	-	-	-	-

## 22. 裝置、裝修物料及設備 FITTINGS, FINISHES AND APPLIANCES

住宅單位機電裝置位置及數量說明表 (第3座) Schedule for Location and Number of Mechanical and Electrical Provisions of Residential Units (Tower 3)

19樓 19/F		單位 Flat															
位置 Location	描述 Description	01	02	03	05	06	07	08	09	10	11	21	22	23	25	26	27
衣帽間 Walk-in Closet	單頭插座 Single socket outlet	-	-	-	-	-	-	-	-	1	1	-	1	1	1	-	-
	雙極開關掣供冷氣機 Double pole switch for A/C unit	-	-	-	-	-	-	-	-	-	1	-	1	1	1	-	-
浴室 Bathroom	單頭插座 Single socket outlet	-	1	1	1	1	1	1	1	1	-	1	1	1	1	1	1
	電熱水爐接線位 Connection point for electrical water heater	-	-	-	-	-	-	-	-	-	-	-	1	1	1	-	-
	熱水爐溫度控制器 Water Heater Remote Control	-	1	1	1	1	1	1	1	1	-	1	1	1	1	1	1
	藍芽揚聲器接線位 Connection point for bluetooth speaker	-	1	1	1	1	1	1	1	1	-	1	1	1	1	1	1
	抽氣扇接線位 Connection Point for Exhaust Fan	-	1	1	1	1	1	1	1	1	-	1	1	1	1	1	1
浴室 1 Bathroom 1	單頭插座 Single socket outlet	1	-	-	-	-	-	-	-	1	1	-	-	-	-	-	-
	熱水爐溫度控制器 Water Heater Remote Control	1	-	-	-	-	-	-	-	1	1	-	-	-	-	-	-
	藍芽揚聲器接線位 Connection point for bluetooth speaker	1	-	-	-	-	-	-	-	1	1	-	-	-	-	-	-
	抽氣扇接線位 Connection Point for Exhaust Fan	1	-	-	-	-	-	-	-	1	1	-	-	-	-	-	-
浴室 2 Bathroom 2	單頭插座 Single socket outlet	1	-	-	-	-	-	-	-	-	1	-	-	-	-	-	-
	熱水爐溫度控制器 Water Heater Remote Control	1	-	-	-	-	-	-	-	-	1	-	-	-	-	-	-
	藍芽揚聲器接線位 Connection point for bluetooth speaker	1	-	-	-	-	-	-	-	-	1	-	-	-	-	-	-
	抽氣扇接線位 Connection Point for Exhaust Fan	1	-	-	-	-	-	-	-	-	1	-	-	-	-	-	-
浴室 3 Bathroom 3	單頭插座 Single socket outlet	-	-	-	-	-	-	-	-	-	1	-	-	-	-	-	-
	熱水爐溫度控制器 Water Heater Remote Control	-	-	-	-	-	-	-	-	-	1	-	-	-	-	-	-
	藍芽揚聲器接線位 Connection point for bluetooth speaker	-	-	-	-	-	-	-	-	-	1	-	-	-	-	-	-
	抽氣扇接線位 Connection Point for Exhaust Fan	-	-	-	-	-	-	-	-	-	1	-	-	-	-	-	-
廁所 Toilet	抽氣扇接線位 Connection Point for Exhaust Fan	-	-	-	-	-	-	-	-	1	1	-	-	-	-	-	-

## 22. 裝置、裝修物料及設備 FITTINGS, FINISHES AND APPLIANCES

住宅單位機電裝置位置及數量說明表 (第3座) Schedule for Location and Number of Mechanical and Electrical Provisions of Residential Units (Tower 3)

19樓 19/F		單位 Flat																
位置 Location	描述 Description	01	02	03	05	06	07	08	09	10	11	21	22	23	25	26	27	
開放式廚房 / 廚房 Open Kitchen / Enclosed Kitchen	單頭插座 Single socket outlet	3	3	1	1	1	1	1	1	4	4	1	1	1	1	1	1	
	雙頭插座 Twin socket outlet	1	1	1	1	1	1	1	1	1	1	1	1	1	1	1	1	
	雙極開關掣供電磁爐 Double pole switch for induction cooker	-	-	-	-	-	-	-	-	-	-	-	-	-	-	1	1	
	門鈴 Door Bell	1	1	1	1	1	1	1	1	1	1	1	1	1	1	1	1	1
	洗衣機來水接駁位 Water points for washing machine	1	1	1	1	1	1	1	1	1	1	1	1	1	1	1	1	1
	洗衣機去水接駁位 Drain points for washing machine	1	1	1	1	1	1	1	1	1	1	1	1	1	1	1	1	1
	微型斷路器配電箱 Miniature circuit breakers board	1	1	-	-	-	-	-	-	-	-	-	-	-	-	-	-	-
	抽油煙機接線位 Connection point for Cookerhood	1	1	1	1	1	1	1	1	1	1	1	1	1	1	1	1	1
	煤氣爐接線位 Connection point for gas water heater	1	1	-	-	-	-	-	-	-	2	2	-	-	-	-	-	-
	抽氣扇接線位 Connection Point for Exhaust Fan	1	1	-	-	-	-	-	-	-	1	1	-	-	-	-	-	-
煤氣煮食爐接線位 Connection point for gas cooker hob	2	2	1	1	1	1	1	1	1	2	2	1	1	1	1	-	-	
儲物室 Store Room	單頭插座 Single socket outlet	1	-	-	-	-	-	-	-	-	-	-	-	-	-	-	-	
	燈掣 Lighting switch	1	-	-	-	-	-	-	-	-	-	-	-	-	-	-	-	
	雙極開關掣供冷氣機 Double pole switch for A/C unit	1	-	-	-	-	-	-	-	-	-	-	-	-	-	-	-	
工作室 Utility Room	微型斷路器配電箱 Miniature circuit breakers board	-	-	-	-	-	-	-	-	1	1	-	-	-	-	-	-	
	單頭插座 Single socket outlet	-	-	-	-	-	-	-	-	1	1	-	-	-	-	-	-	
	燈掣 Lighting switch	-	-	-	-	-	-	-	-	2	2	-	-	-	-	-	-	
	雙極開關掣供冷氣機 Double pole switch for A/C unit	-	-	-	-	-	-	-	-	1	1	-	-	-	-	-	-	
露台 Balcony	雙極開關掣供抽氣扇 Double pole switch for ventilation fan	-	-	-	-	-	-	-	-	1	1	-	-	-	-	-	-	
	煤氣熱水爐接線位 Connection point for Gas Water Heater	1	-	1	1	1	1	1	1	-	-	1	-	-	-	1	1	
私人平台 Private Roof	室外冷氣機開關掣 Isolator for outdoor A/C Unit	2	1	2	2	2	2	2	2	2	-	2	3	3	3	2	2	
	防水單頭插座 Weatherproof single socket outlet	2	2	2	2	2	2	2	2	4	4	2	2	2	2	2	2	
冷氣機平台 A/C Platform	室外冷氣機開關掣 Isolator for outdoor A/C Unit	2	1	-	-	-	-	-	-	4	3	-	-	-	-	-	-	

## 22. 裝置、裝修物料及設備 FITTINGS, FINISHES AND APPLIANCES

住宅單位機電裝置位置及數量說明表 (第5座) Schedule for Location and Number of Mechanical and Electrical Provisions of Residential Units (Tower 5)

位置 Location	描述 Description	單位 Flat																							
		高層地下 UG/F												1樓 1/F											
		01	02	06	07	08	09	10	11	12	15	16	01	02	06	07	08	09	10	11	12	15	16		
大門入口 Main Entrance	門鈴按鈕 Door bell push button	1	1	1	1	1	1	1	1	1	1	1	1	1	1	1	1	1	1	1	1	1	1		
客廳及飯廳 Living Room and Dining Room	電視及電台天線插座 TV and FM outlet	1	1	1	1	1	1	1	1	1	1	1	1	1	1	1	1	1	1	1	1	1	1		
	電話插座 Telephone outlet	1	1	1	1	1	1	1	1	1	1	1	1	1	1	1	1	1	1	1	1	1	1		
	數據插座 Data outlet	1	1	1	1	1	1	1	1	1	1	1	1	1	1	1	1	1	1	1	1	1	1		
	單頭插座 Single socket outlet	2	2	2	2	2	2	2	2	2	2	2	2	2	2	2	2	2	2	2	2	2	2		
	雙頭插座 Twin Socket outlet	2	2	2	2	2	2	2	2	2	2	2	2	2	2	2	2	2	2	2	2	2	2		
	燈掣 Lighting switch	8	7	5	6	6	8	6	6	6	6	8	8	7	5	5	6	8	6	6	6	6	8		
	雙極開關掣供冷氣機 Double pole switch for A/C unit	1	1	1	1	1	1	1	1	1	1	1	1	1	1	1	1	1	1	1	1	1	1		
	雙極開關掣供抽氣扇 Double pole switch for ventilation fan	1	1	-	1	1	1	1	1	1	1	1	1	1	-	-	1	1	1	1	1	1	1		
	雙極開關掣供電熱水爐 Double pole switch for electrical water heater	-	1	-	-	-	-	-	-	-	-	-	-	1	-	-	-	-	-	-	-	-	-		
	雙極開關掣供煤氣熱水爐 Double pole switch for gas water heater	1	-	-	1	1	1	1	1	1	1	1	1	-	-	-	1	1	1	1	1	1	1		
	USB 插頭配件 USB Socket Outlet	-	-	1	1	1	-	-	1	1	1	-	-	-	1	1	1	-	-	1	1	1	-		
	微型斷路器配電箱 Miniature circuit breakers board	1	1	1	1	1	1	1	1	1	1	1	1	1	1	1	1	1	1	1	1	1	1		
對講機 Door phone	1	1	1	1	1	1	1	1	1	1	1	1	1	1	1	1	1	1	1	1	1	1			
睡房 Master Bedroom	電視及電台天線插座 TV and FM outlet	1	1	1	-	-	1	-	-	-	-	1	1	1	1	-	-	1	-	-	-	1			
	電話插座 Telephone outlet	1	1	1	-	-	1	-	-	-	-	1	1	1	1	1	-	1	-	-	-	1			
	雙頭插座 Twin Socket Outlet	2	2	2	-	-	2	-	-	-	-	2	2	2	2	1	-	2	-	-	-	2			
	燈掣 Lighting switch	1	1	3	-	-	1	-	-	-	-	1	1	1	3	3	-	1	-	-	-	1			
	雙極開關掣供冷氣機 Double pole switch for A/C unit	1	1	1	-	-	1	-	-	-	-	1	1	1	1	1	-	1	-	-	-	1			
	雙極開關掣供抽氣扇 Double pole switch for ventilation fan	-	-	1	-	-	-	-	-	-	-	-	-	-	1	1	-	-	-	-	-	-			

## 22. 裝置、裝修物料及設備 FITTINGS, FINISHES AND APPLIANCES

住宅單位機電裝置位置及數量說明表 (第5座) Schedule for Location and Number of Mechanical and Electrical Provisions of Residential Units (Tower 5)

位置 Location	描述 Description	單位 Flat																							
		高層地下 UG/F												1樓 1/F											
		01	02	06	07	08	09	10	11	12	15	16	01	02	06	07	08	09	10	11	12	15	16		
睡房 2 Bedroom 2	電視及電台天線插座 TV and FM outlet	1	-	-	-	-	1	-	-	-	-	1	1	-	-	-	-	1	-	-	-	-	1		
	電話插座 Telephone outlet	1	-	-	-	-	1	-	-	-	-	1	1	-	-	-	-	1	-	-	-	-	1		
	單頭插座 Single socket outlet	1	-	-	-	-	1	-	-	-	-	1	1	-	-	-	-	1	-	-	-	-	1		
	雙頭插座 Twin Socket outlet	1	-	-	-	-	1	-	-	-	-	1	1	-	-	-	-	1	-	-	-	-	1		
	燈掣 Lighting switch	1	-	-	-	-	1	-	-	-	-	1	1	-	-	-	-	1	-	-	-	-	1		
	雙極開關掣供冷氣機 Double pole switch for A/C unit	1	-	-	-	-	1	-	-	-	-	1	1	-	-	-	-	1	-	-	-	-	1		
衣帽間 Walk-in Closet	單頭插座 Single socket outlet	-	1	-	-	-	-	-	-	-	-	-	-	1	-	-	-	-	-	-	-	-	-		
	燈掣 Lighting switch	-	1	-	-	-	-	-	-	-	-	-	-	1	-	-	-	-	-	-	-	-	-		
	雙極開關掣供冷氣機 Double pole switch for A/C unit	-	1	-	-	-	-	-	-	-	-	-	-	1	-	-	-	-	-	-	-	-	-		
浴室 Bathroom	單頭插座 Single socket outlet	1	1	1	1	1	1	1	1	1	1	1	1	1	1	1	1	1	1	1	1	1	1		
	電熱水爐接線位 Connection point for electrical water heater	-	1	-	-	-	-	-	-	-	-	-	-	1	-	-	-	-	-	-	-	-	-		
	熱水爐溫度控制器 Water Heater Remote Control	1	1	1	1	1	1	1	1	1	1	1	1	1	1	1	1	1	1	1	1	1	1		
	藍芽揚聲器接線位 Connection point for bluetooth speaker	1	1	1	1	1	1	1	1	1	1	1	1	1	1	1	1	1	1	1	1	1	1		
	抽氣扇接線位 Connection Point for Exhaust Fan	1	1	1	1	1	1	1	1	1	1	1	1	1	1	1	1	1	1	1	1	1	1		



## 22. 裝置、裝修物料及設備 FITTINGS, FINISHES AND APPLIANCES

住宅單位機電裝置位置及數量說明表 (第5座) Schedule for Location and Number of Mechanical and Electrical Provisions of Residential Units (Tower 5)

位置 Location	描述 Description	單位 Flat																							
		高層地下 UG/F												1樓 1/F											
		01	02	06	07	08	09	10	11	12	15	16	01	02	06	07	08	09	10	11	12	15	16		
開放式廚房 / 廚房 Open Kitchen / Enclosed Kitchen	單頭插座 Single socket outlet	1	1	1	1	1	1	1	1	1	1	1	1	1	1	1	1	1	1	1	1	1	1		
	雙頭插座 Twin socket outlet	1	1	1	1	1	1	1	1	1	1	1	1	1	1	1	1	1	1	1	1	1	1		
	雙極開關掣供電磁爐 Double pole switch for induction cooker	1	1	-	-	1	1	-	1	1	1	-	1	1	-	1	1	1	-	1	1	1	-		
	門鈴 Door Bell	1	1	1	1	1	1	1	1	1	1	1	1	1	1	1	1	1	1	1	1	1	1		
	洗衣機來水接駁位 Water points for washing machine	1	1	1	1	1	1	1	1	1	1	1	1	1	1	1	1	1	1	1	1	1	1		
	洗衣機去水接駁位 Drain points for washing machine	1	1	1	1	1	1	1	1	1	1	1	1	1	1	1	1	1	1	1	1	1	1		
	抽油煙機接線位 Connection point for Cookerhood	1	1	1	1	1	1	1	1	1	1	1	1	1	1	1	1	1	1	1	1	1	1		
	煤氣煮食爐接線位 Connection point for gas cooker hob	-	-	1	1	-	-	1	-	-	-	1	-	-	1	-	-	-	1	-	-	-	1		
露台 Balcony	煤氣熱水爐接線位 Connection point for Gas Water Heater	-	-	-	-	-	-	-	-	-	-	-	1	-	1	1	1	1	1	1	1	1			
	室外冷氣機開關掣 Isolator for outdoor A/C Unit	-	-	-	-	-	-	-	-	-	-	-	1	3	2	2	1	1	1	1	1	1			
私人花園 Private Garden	防水單頭插座 Weatherproof single socket outlet	2	2	2	2	2	2	2	2	2	2	2	-	-	-	-	-	-	-	-	-	-			
	煤氣熱水爐接線位 Connection point for Gas Water Heater	1	-	1	1	1	1	1	1	1	1	1	-	-	-	-	-	-	-	-	-	-			
	室外冷氣機開關掣 Isolator for outdoor A/C Unit	1	3	2	1	1	1	1	1	1	1	-	-	-	-	-	-	-	-	-	-	-			
冷氣機平台 A/C Platform	室外冷氣機開關掣 Isolator for outdoor A/C Unit	1	-	-	-	-	1	-	-	-	-	-	1	-	-	-	-	1	-	-	-	1			

## 22. 裝置、裝修物料及設備 FITTINGS, FINISHES AND APPLIANCES

住宅單位機電裝置位置及數量說明表 (第5座) Schedule for Location and Number of Mechanical and Electrical Provisions of Residential Units (Tower 5)

位置 Location	描述 Description	單位 Flat																							
		2樓-18樓 2/F-18/F														19樓 19/F									
		01	02	03	05	06	07	08	09	10	11	12	15	16	01	05	06	07	08	09	10	11	12	15	16
大門入口 Main Entrance	門鈴按鈕 Door bell push button	1	1	1	1	1	1	1	1	1	1	1	1	1	1	1	1	1	1	1	1	1	1	1	
客廳及飯廳 Living Room and Dining Room	電視及電台天線插座 TV and FM outlet	1	1	1	1	1	1	1	1	1	1	1	1	1	1	1	1	1	1	1	1	1	1	1	
	電話插座 Telephone outlet	1	1	1	1	1	1	1	1	1	1	1	1	1	1	1	1	1	1	1	1	1	1	1	
	數據插座 Data outlet	1	1	1	1	1	1	1	1	1	1	1	1	1	1	1	1	1	1	1	1	1	1	1	
	單頭插座 Single socket outlet	2	2	2	2	2	2	2	2	2	2	2	2	2	-	2	2	2	2	2	2	2	2	2	
	雙頭插座 Twin Socket outlet	2	2	2	2	2	1	2	2	2	2	2	2	2	3	2	2	1	2	2	2	2	2	2	
	燈掣 Lighting switch	8	7	8	5	5	5	6	8	6	6	6	6	8	10	5	5	5	6	8	6	6	6	8	
	雙極開關掣供冷氣機 Double pole switch for A/C unit	1	1	1	1	1	1	1	1	1	1	1	1	1	2	1	1	1	1	1	1	1	1	1	
	雙極開關掣供抽氣扇 Double pole switch for ventilation fan	1	1	1	-	-	-	1	1	1	1	1	1	1	2	-	-	-	1	1	1	1	1	1	
	雙極開關掣供電熱水爐 Double pole switch for electrical water heater	-	1	-	-	-	-	-	-	-	-	-	-	-	-	-	-	-	-	-	-	-	-	-	
	雙極開關掣供煤氣熱水爐 Double pole switch for gas water heater	1	-	1	-	-	-	1	1	1	1	1	1	1	2	-	-	-	1	1	1	1	1	1	
	USB 插頭配件 USB Socket Outlet	-	-	-	1	1	1	1	-	-	1	1	1	-	-	1	1	1	1	-	-	1	1	-	
	微型斷路器配電箱 Miniature circuit breakers board	1	1	1	1	1	1	1	1	1	1	1	1	1	-	1	1	1	1	1	1	1	1	1	
對講機 Door phone	1	1	1	1	1	1	1	1	1	1	1	1	1	1	1	1	1	1	1	1	1	1	1		
睡房 Master Bedroom	電視及電台天線插座 TV and FM outlet	1	1	1	1	1	-	-	1	-	-	-	-	1	1	1	1	-	-	1	-	-	-	1	
	電話插座 Telephone outlet	1	1	1	1	1	1	-	1	-	-	-	-	1	1	1	1	1	-	1	-	-	-	1	
	雙頭插座 Twin Socket Outlet	2	2	2	2	2	1	-	2	-	-	-	-	2	2	2	2	1	-	2	-	-	-	2	
	燈掣 Lighting switch	1	1	1	3	3	3	-	1	-	-	-	-	1	2	3	3	3	-	1	-	-	-	1	
	雙極開關掣供冷氣機 Double pole switch for A/C unit	1	1	1	1	1	1	-	1	-	-	-	-	1	1	1	1	1	-	1	-	-	-	1	
	雙極開關掣供抽氣扇 Double pole switch for ventilation fan	-	-	-	1	1	1	-	-	-	-	-	-	-	-	1	1	1	1	-	-	-	-	-	

備註：不設4樓、13樓及14樓。  
Note: 4/F, 13/F and 14/F are omitted.

## 22. 裝置、裝修物料及設備 FITTINGS, FINISHES AND APPLIANCES

住宅單位機電裝置位置及數量說明表 (第5座) Schedule for Location and Number of Mechanical and Electrical Provisions of Residential Units (Tower 5)

位置 Location	描述 Description	單位 Flat																							
		2樓-18樓 2/F-18/F														19樓 19/F									
		01	02	03	05	06	07	08	09	10	11	12	15	16	01	05	06	07	08	09	10	11	12	15	16
睡房 2 Bedroom 2	電視及電台天線插座 TV and FM outlet	1	-	1	-	-	-	-	1	-	-	-	-	1	1	-	-	-	-	1	-	-	-	1	
	電話插座 Telephone outlet	1	-	1	-	-	-	-	1	-	-	-	-	1	1	-	-	-	-	1	-	-	-	1	
	單頭插座 Single socket outlet	1	-	1	-	-	-	-	1	-	-	-	-	1	1	-	-	-	-	1	-	-	-	1	
	雙頭插座 Twin Socket outlet	1	-	1	-	-	-	-	1	-	-	-	-	1	1	-	-	-	-	1	-	-	-	1	
	燈掣 Lighting switch	1	-	1	-	-	-	-	1	-	-	-	-	1	1	-	-	-	-	1	-	-	-	1	
	雙極開關掣供冷氣機 Double pole switch for A/C unit	1	-	1	-	-	-	-	1	-	-	-	-	1	1	-	-	-	-	1	-	-	-	1	
睡房 3 Bedroom 3	電視及電台天線插座 TV and FM outlet	-	-	-	-	-	-	-	-	-	-	-	-	1	-	-	-	-	-	-	-	-	-		
	電話插座 Telephone outlet	-	-	-	-	-	-	-	-	-	-	-	-	1	-	-	-	-	-	-	-	-	-		
	單頭插座 Single socket outlet	-	-	-	-	-	-	-	-	-	-	-	-	1	-	-	-	-	-	-	-	-	-		
	雙頭插座 Twin Socket Outlet	-	-	-	-	-	-	-	-	-	-	-	-	1	-	-	-	-	-	-	-	-	-		
	燈掣 Lighting switch	-	-	-	-	-	-	-	-	-	-	-	-	1	-	-	-	-	-	-	-	-	-		
	雙極開關掣供冷氣機 Double pole switch for A/C unit	-	-	-	-	-	-	-	-	-	-	-	-	1	-	-	-	-	-	-	-	-	-		
衣帽間 Walk-in Closet	單頭插座 Single socket outlet	-	1	-	-	-	-	-	-	-	-	-	1	-	-	-	-	-	-	-	-	-	-		
	燈掣 Lighting switch	-	1	-	-	-	-	-	-	-	-	-	2	-	-	-	-	-	-	-	-	-	-		
	雙極開關掣供冷氣機 Double pole switch for A/C unit	-	1	-	-	-	-	-	-	-	-	-	-	-	-	-	-	-	-	-	-	-	-		
	雙極開關掣供抽氣扇 Double pole switch for ventilation fan	-	-	-	-	-	-	-	-	-	-	-	1	-	-	-	-	-	-	-	-	-	-		
浴室 Bathroom	單頭插座 Single socket outlet	1	1	1	1	1	1	1	1	1	1	1	1	-	1	1	1	1	1	1	1	1	1		
	電熱水爐接線位 Connection point for electrical water heater	-	1	-	-	-	-	-	-	-	-	-	-	-	-	-	-	-	-	-	-	-	-		
	熱水爐溫度控制器 Water Heater Remote Control	1	1	1	1	1	1	1	1	1	1	1	1	-	1	1	1	1	1	1	1	1	1		
	藍芽揚聲器接線位 Connection point for bluetooth speaker	1	1	1	1	1	1	1	1	1	1	1	1	-	1	1	1	1	1	1	1	1	1		
	抽氣扇接線位 Connection Point for Exhaust Fan	1	1	1	1	1	1	1	1	1	1	1	1	-	1	1	1	1	1	1	1	1	1		

備註：不設4樓、13樓及14樓。  
Note: 4/F, 13/F and 14/F are omitted.

## 22. 裝置、裝修物料及設備 FITTINGS, FINISHES AND APPLIANCES

住宅單位機電裝置位置及數量說明表 (第5座) Schedule for Location and Number of Mechanical and Electrical Provisions of Residential Units (Tower 5)

位置 Location	描述 Description	單位 Flat																							
		2樓-18樓 2/F-18/F														19樓 19/F									
		01	02	03	05	06	07	08	09	10	11	12	15	16	01	05	06	07	08	09	10	11	12	15	16
浴室 1 Bathroom 1	單頭插座 Single socket outlet	-	-	-	-	-	-	-	-	-	-	-	-	-	1	-	-	-	-	-	-	-	-	-	
	熱水爐溫度控制器 Water Heater Remote Control	-	-	-	-	-	-	-	-	-	-	-	-	-	1	-	-	-	-	-	-	-	-	-	
	藍芽揚聲器接線位 Connection point for bluetooth speaker	-	-	-	-	-	-	-	-	-	-	-	-	-	1	-	-	-	-	-	-	-	-	-	
	抽氣扇接線位 Connection Point for Exhaust Fan	-	-	-	-	-	-	-	-	-	-	-	-	-	1	-	-	-	-	-	-	-	-	-	
浴室 2 Bathroom 2	單頭插座 Single socket outlet	-	-	-	-	-	-	-	-	-	-	-	-	-	1	-	-	-	-	-	-	-	-	-	
	熱水爐溫度控制器 Water Heater Remote Control	-	-	-	-	-	-	-	-	-	-	-	-	-	1	-	-	-	-	-	-	-	-	-	
	藍芽揚聲器接線位 Connection point for bluetooth speaker	-	-	-	-	-	-	-	-	-	-	-	-	-	1	-	-	-	-	-	-	-	-	-	
	抽氣扇接線位 Connection Point for Exhaust Fan	-	-	-	-	-	-	-	-	-	-	-	-	-	1	-	-	-	-	-	-	-	-	-	
廁所 Toilet	抽氣扇接線位 Connection Point for Exhaust Fan	-	-	-	-	-	-	-	-	-	-	-	-	-	1	-	-	-	-	-	-	-	-	-	
開放式廚房 / 廚房 Open Kitchen / Enclosed Kitchen	單頭插座 Single socket outlet	1	1	1	1	1	1	1	1	1	1	1	1	1	3	1	1	1	1	1	1	1	1	1	
	雙頭插座 Twin socket outlet	1	1	1	1	1	1	1	1	1	1	1	1	1	1	1	1	1	1	1	1	1	1	1	
	雙極開關掣供電磁爐 Double pole switch for induction cooker	1	1	-	-	-	1	1	1	-	1	1	1	-	-	-	-	1	1	1	-	1	1	-	
	門鈴 Door Bell	1	1	1	1	1	1	1	1	1	1	1	1	1	1	1	1	1	1	1	1	1	1	1	
	洗衣機來水接駁位 Water points for washing machine	1	1	1	1	1	1	1	1	1	1	1	1	1	1	1	1	1	1	1	1	1	1	1	
	洗衣機去水接駁位 Drain points for washing machine	1	1	1	1	1	1	1	1	1	1	1	1	1	1	1	1	1	1	1	1	1	1	1	
	抽油煙機接線位 Connection point for Cookerhood	1	1	1	1	1	1	1	1	1	1	1	1	1	1	1	1	1	1	1	1	1	1	1	
	煤氣爐接線位 Connection point for gas water heater	-	-	-	-	-	-	-	-	-	-	-	-	-	2	-	-	-	-	-	-	-	-	-	
	抽氣扇接線位 Connection Point for Exhaust Fan	-	-	-	-	-	-	-	-	-	-	-	-	-	-	1	-	-	-	-	-	-	-	-	
	煤氣煮食爐接線位 Connection point for gas cooker hob	-	-	1	1	1	-	-	-	1	-	-	-	1	2	1	1	-	-	-	1	-	-	1	

備註：不設4樓、13樓及14樓。  
Note: 4/F, 13/F and 14/F are omitted.

## 22. 裝置、裝修物料及設備 FITTINGS, FINISHES AND APPLIANCES

住宅單位機電裝置位置及數量說明表 (第5座) Schedule for Location and Number of Mechanical and Electrical Provisions of Residential Units (Tower 5)

位置 Location	描述 Description	單位 Flat																							
		2樓-18樓 2/F-18/F														19樓 19/F									
		01	02	03	05	06	07	08	09	10	11	12	15	16	01	05	06	07	08	09	10	11	12	15	16
工作室 Utility Room	微型斷路器配電箱 Miniature circuit breakers board	-	-	-	-	-	-	-	-	-	-	-	-	-	1	-	-	-	-	-	-	-	-	-	
	單頭插座 Single socket outlet	-	-	-	-	-	-	-	-	-	-	-	-	-	1	-	-	-	-	-	-	-	-	-	
	燈掣 Lighting switch	-	-	-	-	-	-	-	-	-	-	-	-	-	2	-	-	-	-	-	-	-	-	-	
	雙極開關掣供冷氣機 Double pole switch for A/C unit	-	-	-	-	-	-	-	-	-	-	-	-	-	1	-	-	-	-	-	-	-	-	-	
	雙極開關掣供抽氣扇 Double pole switch for ventilation fan	-	-	-	-	-	-	-	-	-	-	-	-	-	1	-	-	-	-	-	-	-	-	-	
露台 Balcony	煤氣熱水爐接線位 Connection point for Gas Water Heater	1	-	1	1	1	1	1	1	1	1	1	1	-	1	1	1	1	1	1	1	1	1		
	室外冷氣機開關掣 Isolator for outdoor A/C Unit	1	3	1	2	2	2	1	1	1	1	1	1	-	2	2	2	1	1	1	1	1	1		
私人平台 Private Roof	防水單頭插座 Weatherproof single socket outlet	-	-	-	-	-	-	-	-	-	-	-	-	4	4	2	2	2	2	2	2	2	2		
冷氣機平台 A/C Platform	室外冷氣機開關掣 Isolator for outdoor A/C Unit	1	-	1	-	-	-	-	1	-	-	-	1	5	-	-	-	-	1	-	-	-	1		

備註：不設4樓、13樓及14樓。

Note: 4/F, 13/F and 14/F are omitted.

## 23. 服務協議 SERVICE AGREEMENTS

食水及沖廁水由水務署供應。

電力由中華電力有限公司供應。

煤氣由香港中華煤氣有限公司供應。

Potable and flushing water is supplied by Water Supplies Department.

Electricity is supplied by CLP Power Hong Kong Limited.

Towngas is supplied by The Hong Kong and China Gas Company Limited

## 24. 地稅

### GOVERNMENT RENT

賣方 (擁有人) 有法律責任繳付住宅物業的地稅直至住宅物業買賣完成日 (包括該日) 為止。

The Vendor (the owner) is liable for the Government rent of a residential property up to and including the date of the completion of the sale and purchase of that residential property.

## 25. 買方的雜項付款

### MISCELLANEOUS PAYMENTS BY PURCHASER

1. 在向買方交付住宅物業在空置情況下的管有權時，買方須向賣方（擁有人）補還水、電力及氣體的按金。
2. 在交付時，買方不須向賣方（擁有人）支付清理廢料的費用。
3. 水、電力及氣體的按金及清理廢料的費用的款額於售樓說明書印製日尚未決定。

備註：

買方須向管理人而不須向賣方（擁有人）繳付水、電力及氣體的按金及清理廢料的費用。

1. On the delivery of the vacant possession of the residential property to the purchaser, the purchaser is liable to reimburse the vendor (the owner) for the deposits for water, electricity and gas.
2. On that delivery, the purchaser is not liable to pay to the vendor (the owner) a debris removal fee.
3. The amount of deposits for water, electricity and gas and debris removal fee is yet to be ascertained at the date on which the sales brochure is printed.

Note :

The purchaser should pay to the manager instead of the vendor (the owner) the deposits for water, electricity and gas and the debris removal fee.



## 26. 欠妥之處的保養責任期 DEFECT LIABILITY WARRANTY PERIOD

按買賣合約的規定，凡售出物業或於買賣合約列出裝設於物業內的裝置、裝修物料或設備有欠妥之處，而該欠妥之處並非由買方行為或疏忽造成，則賣方在接獲買方在買賣成交日期後的6個月內送達的書面通知後，須於合理地切實可行的範圍內，盡快自費作出補救。

As provided in the agreement for sale and purchase, the vendor shall, at its own cost and as soon as reasonably practicable after receipt of a written notice served by the purchaser within 6 months after the date of completion of the sale and purchase, remedy any defects to the property sold, or the fittings, finishes or appliances incorporated into the property as set out in the agreement for sale and purchase, caused otherwise than by the act or neglect of the purchaser.

## 27. 斜坡維修

### MAINTENANCE OF SLOPES

#### A. 批地文件規定，期數中的住宅物業的擁有人須自費維修任何斜坡

##### 1. 有關規定的條款 :-

##### (i) 批地文件特別批地條款第(36)條規定：

- (a) 倘若為了或有關該地段或其任何部分之形成、平整或發展或根據批地文件買方須完成之任何其他工程或因任何其他目的，於該地段內或任何政府土地中現時或以往曾經進行任何削走、移除或移後任何土地、或任何建造或填土或任何斜坡處理工程，不論以何種形式、亦不論有否獲得署長事先書面同意，買方須自費進行及建造為保護及支撐該地段內之土地及任何毗連或毗鄰政府土地或已租出土地及排除及防止其後發生之任何崩塌、山崩或下陷而當時或日後任何時間所須之斜坡處理工程，護土牆或其他支撐、保護、排水或附屬或其他工程。買方須於批地文件的批地年期內所有時間自費保養該土地、斜坡處理工程、護土牆或其他支撐、保護、排水或附屬或其他工程，以令其保持修葺良好堅固和狀況良好以令署長滿意。
- (b) 本特別批地條款第(a)條的任何規定不得影響政府在此等條款下的權利，尤其是本文特別批地條款第(35)條。
- (c) 倘若因或由於買方作出之形成、平整、發展或其他工程或因其他原因於任何時間不論在或由任何土地、在該地段內或任何毗連或毗鄰政府土地或已租出土地導致或引致崩塌、山崩或下陷，買方須自費使其回復原狀及將其修復令署長滿意，並須彌償政府、其代理及承建商因該崩塌、山崩或下陷而導致、蒙受或招致之所有費用、收費、損害賠償、訴求及申索。
- (d) 除了批地文件規定就任何違反此等條款的任何其他權利或補救之外，署長有權以書面通知要求買方進行、建造及保養該等土地、斜坡處理工程、護土牆、或其他支撐、保護、及排水或附屬或其他工程，或使其回復原狀及修復任何崩塌、山崩或下陷。倘若買方在該通知指定期限內忽視或未能遵守該通知以令署長滿意，署長可立即執行及進行任何必須之工程而買方須應要求向政府付還有關費用連同任何行政或專業費用及收費。

##### (ii) 批地文件特別批地條款第(49)條規定：

- (a) 買方確認該土地可能由於該地段的範圍內及該地段範圍外以綠色加交叉黑斜線顯示於批地文件所夾附圖則上(下稱「綠色加交叉黑斜線範圍」)的天然山坡性質而受山泥傾瀉和巨石下墜的危害所影響。
- (b) (i) 買方須於2017年9月30日之前或署長批准的其他期限自費進行及完成令署長全面滿意，於該地段及綠色加交叉黑斜線範圍內的岩土勘測(下稱「岩土勘測」)，以便研究天然山坡山泥傾瀉危害。

- (ii) 岩土勘測結果須包括一份將由署長批准的緩解提議以作為進行、完成及保養所有需要於該地段內及於綠色加交叉黑斜線範圍上建造的緩解及鞏固工程及相關工程、提供通道以便日後保養已完成的緩解及鞏固工程(該通道提供下稱「維持通道」)，以保障任何現已興建或將興建於該地段上的一幢或多幢建築物及住客或佔用人、其真正的賓客、訪客和獲邀進入者免受由於該地段及綠色加交叉黑斜線範圍山泥傾瀉及巨石下墜的危害。
  - (iii) 於該地段外或綠色加交叉黑斜線範圍上的任何維持通道提議必須受制於署長事先書面批准的約束及如經已批准，須作為已經署長絕對酌情決定的批准或要求的緩解提議之一部分(下稱「經批准緩解提議」)及甚至那時，署長有絕對酌情決定以書面通知要求買方自費於本協議任何時間內重置或消除於本地段外及綠色加交叉黑斜線範圍上的任何維持通道。
  - (iv) 除非得到署長事先書面批准，任何土地勘測、緩解及鞏固工程及相關工程，及建造維持通道不能於綠色加交叉黑斜線範圍上或政府土地上進行。
- (c) 買方須於2022年9月30日之前或署長批准的其他期限，自費進行及完成令署長全面滿意，根據經批准緩解提議的該等緩解及鞏固工程及相關工程及維持通道(該等於該地段內的緩解及鞏固工程及相關工程、及維持通道以下統稱「內部工程」及該等於綠色加交叉黑斜線範圍或任何政府土地上的緩解及鞏固工程及相關工程、及維持通道以下統稱「外部工程」)。
  - (d) 買方現確認及同意除非買方已證明因技術性原因，包括但不限於岩土及安全原因，工程為嚴格地需要及不能避免至署長全面滿意，否則不能進行外部工程。署長有絕對酌情決定於批准該等工程時施加其認為合適的條款及條件。
  - (e) 買方現確認及同意已進行的岩土勘測及外部工程為一次性質及於該等工程完成令署長全面滿意前，受山泥傾瀉和巨石下墜危害的任何興建於該地段上或該地段內任何範圍之任何建築物的所有部分並不能被佔用或使用。
  - (f) (i) 買方在協議的所有時間內須自費保養內部工程及外部工程修葺良好堅固和狀況良好令署長全面滿意，以確保內部工程及外部工程能繼續發揮其設定的作用。  
(ii) 保養工程包括但不限於清理下墜於內部工程或外部工程或於本特別批地條款第(g)條所指的天然山坡危害緩解和鞏固工程圖則上所示的該地段或政府土地的山泥傾瀉泥土或巨石。  
(iii) 如買方違反責任，沒有按規定保養內部工程及外部工程，除政府可針對買方而具有的權利和補救外，署長亦有權以書面通知要求買方在署長絕對酌情決定認為適當的限期內進行該等保養工程。倘若買方在該通知指定限期內忽視或未能遵守該通知令署長滿意，署長可立即執行及進行所需的保養工程而買方須應要求向政府付還有關費用連同任何行政和專業費用及收費。

## 27. 斜坡維修

### MAINTENANCE OF SLOPES

- (g) 買方須自費到土地註冊處就該土地註冊已獲署長批准的圖則，顯示內部工程及外部工程的位置、性質和涵蓋範圍以及該地段及政府土地內買方可能須要或被要求進行保養工程的位置和範圍，包括於該地段及政府土地範圍根據本特別批地條款第(f)條買方可能須要或被署長要求進行清理山泥傾瀉泥石或巨石的範圍及維持通道(有關圖則下稱「天然山坡危害緩解和鞏固工程圖則」)。
- (h) 岩土勘測、內部工程及外部工程須全面遵從《建築物條例》，其任何附屬規例及任何修訂法例的規定及任何其他相關法例。
- (i) 為進行岩土勘測、進行及完成、視察及保養內部工程及外部工程為目的，買方有權由任何政府土地進出綠色加交叉黑斜線範圍及任何存在外部工程現已興建或將興建在上的政府土地而買方可能被要求或將被要求進行保養工程，包括受制於署長絕對酌情決定而可能施加的該等條款及條件清理於內部工程或外部工程上的山泥傾瀉泥石或巨石。
- (j) 倘因進行岩土勘測或因進行、視察及保養內部工程或外部工程而導致或令綠色加交叉黑斜線範圍、任何其他政府土地或任何該地段以外土地任何損害，買方須自費於署長規定時限內將其修復令署長全面滿意。
- (k) 買方須就其根據本特別批地條款正在進行或一直進行的工程或買方進行岩土勘測或內部工程及外部工程的設計、建造及保養的任何遺漏、疏忽或缺失，包括但不限於財產的損害或損失、喪失生命或身體受傷，直接或間接產生的所有責任、損失、損害、索償、開支、費用、收費、訴求、訴訟及法律程序向政府彌償，並確保其免責。

(iii) 一份日期為2019年9月5日，以註冊摘要號碼19102901120013於土地註冊處註冊的通知書(「通知書」)再作規定，當按照批地文件特別批地條款第(49)(c)條完成外部工程(根據批地文件特別批地條款第(49)(c)條所界定釋義)，買方將沒有義務根據批地文件特別批地條款第(49)(f)保養位於綠色加交叉黑斜線範圍內於通知書所夾附圖則以綠色加黑點顯示的部分內(「該範圍」)的內部工程，而買方根據批地文件特別批地條款第(49)(i)條於該範圍的通行及進出權將終止。

2. 期數中的每名擁有人均須分擔維修工程的費用。

3. 顯示該斜坡及已經或將會在期數所位的土地之內或之外建造的任何護土牆或有關結構物的圖則，已載於本節末頁。

#### B. 擁有人自費就期數維修任何斜坡的承諾

不適用。

#### C. 根據公契，期數的管理人獲擁有人授權進行維修工程

根據公契，期數的管理人獲擁有人授權聘請適當合資格人員以遵守批地文件並按照土力工程處發出的「岩土指南第五冊——斜坡維修指南」(以其不時修訂或取代為準)及《斜坡維修手冊》，以及按照由恰當政府部門不時發出有關斜坡、護土牆及相關構築物的所有指南，檢查、保存及保養任何斜坡及護土牆，並向所有擁有人收取因管理人進行這等修葺、維修及任何其他工程而合法地已招致或將會招致的一切費用。

## 27. 斜坡維修

### MAINTENANCE OF SLOPES

#### A. The land grant requires the owners of the residential properties in the Phase to maintain any slope at their own cost

##### 1. The terms of requirement :-

###### (i) Special Condition No.(36) of the Land Grant stipulates that:

- (a) Where there is or has been any cutting away, removal or setting back of any land, or any building-up or filling-in or any slope treatment works of any kind whatsoever, whether with or without the prior written consent of the Director, either within the lot or on any Government land, which is or was done for the purpose of or in connection with the formation, levelling or development of the lot or any part thereof or any other works required to be done by the Purchaser under these Conditions, or for any other purpose, the Purchaser shall at his own expense carry out and construct such slope treatment works, retaining walls or other support, protection, drainage or ancillary or other works as shall or may then or at any time thereafter be necessary to protect and support such land within the lot and also any adjacent or adjoining Government or leased land and to obviate and prevent any falling away, landslip or subsidence occurring thereafter. The Purchaser shall at all times during the term granted under the Land Grant maintain at his own expense the said land, slope treatment works, retaining walls or other support, protection, drainage or ancillary or other works in good and substantial repair and condition to the satisfaction of the Director.
- (b) Nothing in sub-clause (a) of this Special Condition shall prejudice the Government's rights under these Conditions, in particular Special Condition No.(35) hereof.
- (c) In the event that as a result of or arising out of any formation, levelling, development or other works done by the Purchaser or owing to any other reason, any falling away, landslip or subsidence occurs at any time, whether in or from any land, within the lot or from any adjacent or adjoining Government or leased land, the Purchaser shall at his own expense reinstate and make good the same to the satisfaction of the Director and shall indemnify the Government, its agents and contractors from and against all costs, charges, damages, demands and claims whatsoever which shall or may be made, suffered or incurred through or by reason of such falling away, landslip or subsidence.
- (d) In addition to any other rights or remedies provided in the Land Grant for breach of any of these Conditions, the Director shall be entitled by notice in writing to call upon the Purchaser to carry out, construct and maintain the said land, slope treatment works, retaining walls, or other support, protection, and drainage or ancillary or other works or to reinstate and make good any falling away, landslip or subsidence, and if the Purchaser shall neglect or fail to comply with the notice to the satisfaction of the Director within the period specified therein, the Director may forthwith execute and carry out any necessary works and the Purchaser shall on demand repay to the Government the cost thereof, together with any administrative and professional fees and charges.

###### (ii) Special Condition No.(49) of the Land Grant stipulates that:

- (a) The Purchaser hereby acknowledges that the lot may be affected by landslide and boulder fall hazards arising from areas within the lot and the area outside the lot shown coloured green cross-hatched black on the plan annexed to the Land Grant (hereinafter referred to as "the Green Cross-hatched Black Area") due to the nature of the natural terrain.

- (b) (i) The Purchaser shall on or before the 30th day of September 2017 or such other date as may be approved by the Director at his own expense carry out and complete in all respects to the satisfaction of the Director a geotechnical investigation (hereinafter referred to as "the Geotechnical Investigation") within the lot and the Green Cross-hatched Black Area for the purpose of studying the natural terrain landslide hazards.
  - (ii) The findings of the Geotechnical Investigation shall include a mitigation proposal to be approved by the Director for carrying out, completing and maintaining all necessary mitigation and stabilisation works and associated works, access provisions for the subsequent maintenance of the completed mitigation and stabilisation works (such access provisions are hereinafter referred to as "Maintenance Access"), to be constructed within the lot and on the Green Cross-hatched Black Area so as to protect any building or buildings erected or to be erected on the lot and residents or occupiers therein and their bona fide guests, visitors or invitees from landslide and boulder fall hazards arising from the lot and the Green Cross-hatched Black Area.
  - (iii) Any Maintenance Access proposed outside the lot or on the Green Cross-hatched Black Area shall be subject to the prior written approval of the Director and if approved, shall become part of the mitigation proposal as approved or required by the Director in his absolute discretion (hereinafter referred to as "the Approved Mitigation Proposal") and even then the Director has the absolute discretion by notice in writing to require the Purchaser at his own expense to relocate or remove any Maintenance Access outside the lot and on the Green Cross-hatched Black Area at any time during the term hereby agreed to be granted.
  - (iv) No ground investigation, mitigation and stabilisation works and associated works, and works for constructing the Maintenance Access shall be carried out on the Green Cross-hatched Black Area or on any Government land without the prior written approval of the Director.
- (c) The Purchaser shall, at his own expense on or before the 30th day of September 2022 or such other date as may be approved by the Director, carry out and complete in all respects to the satisfaction of the Director such mitigation and stabilisation works and associated works and the Maintenance Access in accordance with the Approved Mitigation Proposal (such mitigation and stabilisation works and associated works, and the Maintenance Access within the lot are hereinafter collectively referred to as "Inside Works" and such mitigation and stabilisation works and associated works, and the Maintenance Access on the Green Cross-hatched Black Area or any Government land are hereinafter collectively referred to as "Outside Works").
  - (d) The Purchaser hereby acknowledges and agrees that no Outside Works shall be carried out unless the Purchaser shall have demonstrated in all respects to the satisfaction of the Director that those works are strictly necessary and unavoidable for technical reasons including but not limited to geotechnical and safety grounds. The Director may, at his sole discretion, approve such works subject to such terms and conditions as he sees fit.

## 27. 斜坡維修



### MAINTENANCE OF SLOPES

- (e) The Purchaser hereby acknowledges and agrees that Geotechnical Investigation and the Outside Works so carried out are one-off and no part of any building erected on the lot or any area within the lot affected by landslide and boulder fall hazards shall be occupied or used before completion of such works in all respects to the satisfaction of the Director.
  - (f)
    - (i) The Purchaser shall, at all times during the term hereby agreed to be granted, maintain at his own expense the Inside Works and the Outside Works in good and substantial repair and condition in all respects to the satisfaction of the Director so as to ensure that the Inside Works and the Outside Works shall continue to perform their designed functions.
    - (ii) The maintenance works shall include but not be limited to clearance of landslide debris or boulders fallen onto the Inside Works or the Outside Works or onto the areas of the lot or the Government land shown on the Natural Terrain Hazard Mitigation and Stabilization Works Plan referred to in sub-clause (g) of this Special Condition.
    - (iii) In addition to any rights or remedies the Government may have against the Purchaser for breach of the Purchaser's obligations to maintain the Inside Works and the Outside Works, the Director shall be entitled by notice in writing to call upon the Purchaser to carry out such maintenance works within a period as the Director shall in his absolute discretion deem fit. If the Purchaser shall neglect or fail to comply with such notice to the satisfaction of the Director within the period specified therein, the Director may forthwith execute and carry out the required maintenance works and the Purchaser shall on demand repay the Government the cost thereof, together with any administrative and professional fees and charges.
  - (g) The Purchaser shall at his own expense register at the Land Registry against the lot a plan approved by the Director indicating the locations, nature and scope of the Inside Works and the Outside Works and the location and extent of the areas of the lot and the Government land on which the Purchaser may require or be required to carry out the maintenance works, including the areas of the lot and the Government land where the Purchaser may require or be required by the Director to carry out clearance of landslide debris or boulders under sub-clause (f) of this Special Condition and the Maintenance Access (which plan is hereinafter referred to as "the Natural Terrain Hazard Mitigation and Stabilization Works Plan").
  - (h) The Geotechnical Investigation, the Inside Works and the Outside Works shall in all respects comply with the Buildings Ordinance, any regulations made thereunder, any amending legislation and any other relevant legislation.
  - (i) For the purpose only of carrying out the Geotechnical Investigation, the carrying out and completing, inspecting and maintaining the Inside Works and the Outside Works, the Purchaser shall have the right of ingress and egress to and from any Government land inside the Green Cross-hatched Black Area and any Government land with the Outside Works erected or to be erected thereon where he may require or be required to carry out maintenance works, including clearance of landslide debris or boulders fallen onto the Inside Works or the Outside Works subject to such terms and conditions as may be imposed by the Director at his sole discretion.
  - (j) In the event that as a result of or arising out of carrying out the Geotechnical Investigation or as a result of or arising out of carrying out, inspecting and maintaining the Inside Works or the Outside Works, any damage is done to the Green Cross-hatched Black Area, any other Government land or any land outside the lot, the Purchaser shall make good such damage at his own expense within such time limit as shall be stipulated by the Director and in all respects to the satisfaction of the Director.
  - (k) The Purchaser shall indemnify and keep indemnified the Government from and against all liabilities, losses, damages, claims, expenses, costs, charges, demands, actions and proceedings whatsoever arising whether directly or indirectly out of or in connection with any works being carried out or having been carried out by the Purchaser pursuant to this Special Condition or any omission, neglect or default by the Purchaser in carrying out the Geotechnical Investigation or in the design, construction and maintenance of the Inside Works or the Outside Works including but not limited to any damage to or loss of properties, loss of life and personal injuries.
- (iii) A Notification Letter dated 5 September 2019 and registered in the Land Registry by Memorial No.19102901120013 (the "Notification Letter") further stipulates that upon completion of the Outside Works (as defined under Special Condition No.(49)(c) of the Land Grant) in accordance with Special Condition No.(49)(c) of the Land Grant, the Purchaser shall have no obligation to maintain the Outside Works within the portion of the Green Cross-hatched Black Area (as defined in Special Condition No.(49)(a) of the Land Grant) as shown coloured green stippled black on the plan attached to the Notification Letter ("the Area") under Special Condition No.(49)(f) of the Land Grant and the Purchaser's right of ingress and egress to and from the Area under Special Condition No.(49)(i) of the Land Grant shall cease.
2. Each of the owners of the Phase is obliged to contribute towards the costs of the maintenance work.
  3. The plan showing the slope, retaining wall or related structures constructed, or to be constructed, within or outside the land on which the Phase is situated is set out at the end of this section.
- B. Owner's undertaking to maintain any slope in relation to the Phase at that owner's own cost**
- Not applicable.
- C. Under the Deed of Mutual Covenant, the manager of the Phase has the owners' authority to carry out the maintenance work**
- Under the Deed of Mutual Covenant, the Manager of the Phase has the owners' authority to engage suitable qualified personnel to inspect keep and maintain the Slopes and Retaining Walls in compliance with the Government Grant and in accordance with the "Geoguide 5 – Guide to Slope Maintenance" issued by the Geotechnical Engineering Office (as amended or substituted from time to time) and the Slope Maintenance Manual and all guidelines issued from time to time by the appropriate government department regarding the maintenance of slopes, retaining walls and related structures and to collect from the Owners all costs lawfully incurred or to be incurred by the Manager in carrying out such maintenance, repair and other works.

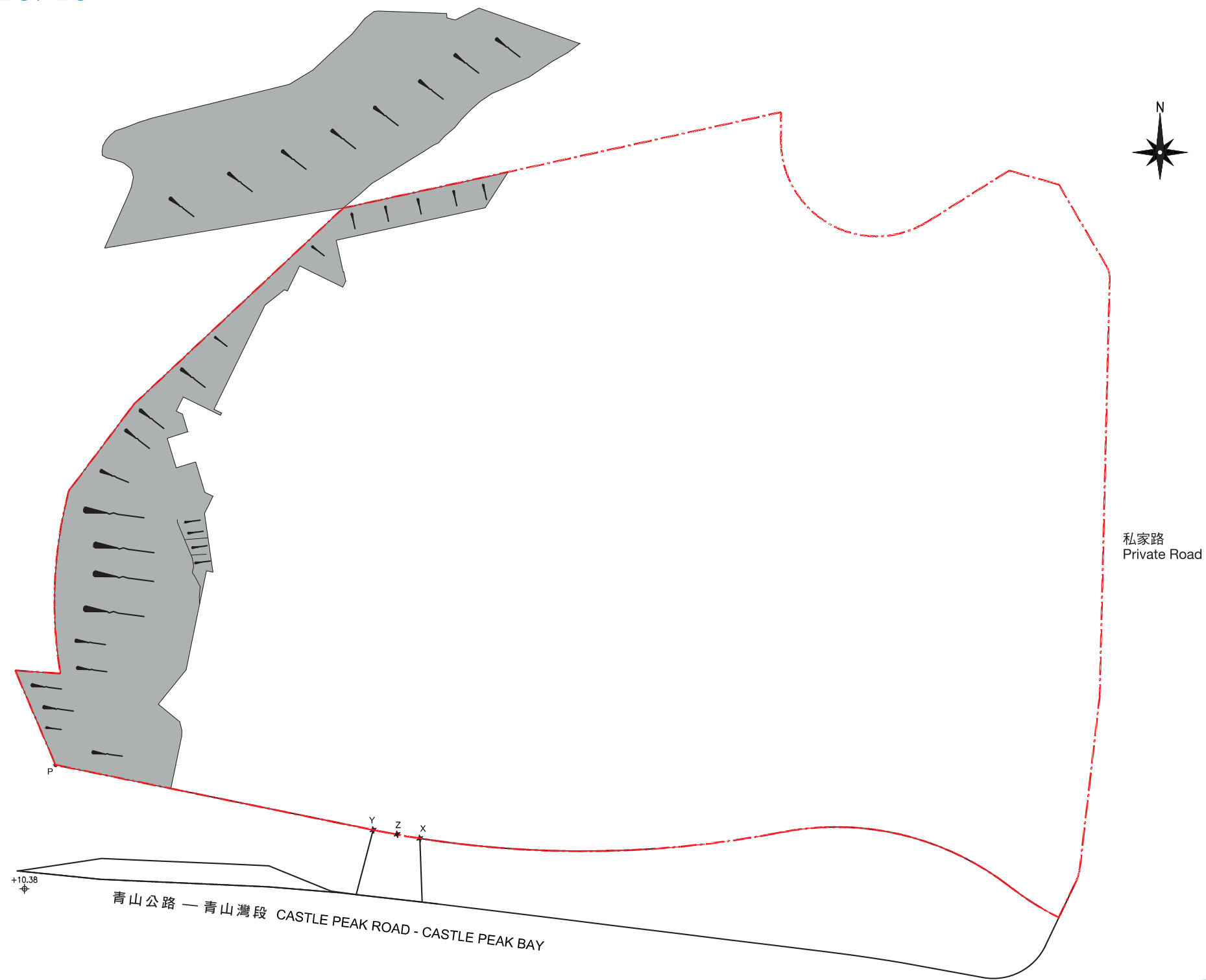
# 27. 斜坡維修 MAINTENANCE OF SLOPES

發展項目的斜坡圖  
SLOPE PLAN OF THE DEVELOPMENT

圖例 Legend:

-  斜坡及護土牆  
Slopes and retaining walls
-  發展項目的地盤界線  
Site Boundary of the Development

比例 Scale 0 1 2 3 4 5 10 米/M



## 28. 修訂 MODIFICATION

不適用

Not Applicable

## 29. 申請建築物總樓面面積寬免的資料

### INFORMATION IN APPLICATION FOR CONCESSION ON GROSS FLOOR AREA OF BUILDING

#### 獲寬免總樓面面積的設施分項

於印製售樓說明書前呈交予並已獲建築事務監督批准的一般建築圖則上有關總樓面面積寬免的分項的最新資料，請見下表。如印製售樓說明書時尚未呈交最終修訂圖則予建築事務監督，則有(#)號的資料可以由認可人士提供的資料作為基礎。直至最終修訂圖則於發出佔用許可證前呈交予並獲建築事務監督批准前，以下分項資料仍可能有所修改。

根據《建築物(規劃)規例》第23(3)(b)條不計算的總樓面面積		面積(平方米)
1.(#)	停車場及上落客貨地方(公共交通總站除外)	6607.139
2.	機房及相類設施	
2.1	所佔面積受相關《認可人士、註冊結構工程師及註冊岩土工程師作業備考》或規例限制的強制性設施或必要機房，例如升降機機房、電訊及廣播設備室、垃圾及物料回收房等積受相關《認可人士、註冊結構工程師及註冊岩土工程師作業備考》或規例限制的強制性設施或必要機房，例如升降機機房、電訊及廣播設備室、垃圾及物料回收房等	1040.834
2.2(#)	所佔面積不受任何《認可人士、註冊結構工程師及註冊岩土工程師作業備考》或規例限制的強制性設施或必要機房，例如僅供消防裝置及設備佔用的房間、電錶房、電力變壓房、食水及鹹水缸等	2363.994
2.3	非強制性或非必要機房，例如空調機房、風櫃房等	不適用
根據聯合作業備考第1及第2號提供的環保設施		面積(平方米)
3.	露台	1897.164
4.	加闊的公用走廊及升降機大堂	不適用
5.	公用空中花園	不適用
6.	隔聲緒	33.260
7.	翼牆、捕風器及風斗	不適用
8.	非結構預製外牆	359.355
9.	工作平台	22.500
10.	隔音屏障	不適用
適意設施		面積(平方米)
11.	供保安人員和管理處員工使用的櫃枱、辦公室、儲物室、警衛室和廁所、業主立案法團辦公室	117.840
12.	住宅康樂設施，包括僅供康樂設施使用的中空、機房、游泳池的濾水器機房、有蓋人行道等	2440.355
13.	有上蓋的園景區及遊樂場	85.709
14.	橫向屏障/有蓋人行道、花棚	不適用
15.	擴大升降機井道	不適用
16.	煙囪管道	不適用



## 29. 申請建築物總樓面面積寬免的資料

### INFORMATION IN APPLICATION FOR CONCESSION ON GROSS FLOOR AREA OF BUILDING

適意設施		面積 (平方米)
17.	其他非強制性或非必要機房，例如鍋爐房、衛星電視共用天線房	不適用
18. (#)	強制性設施或必要機房所需的管槽、氣槽	1118.652
19.	非強制性設施或非必要機房所需的管槽、氣槽	不適用
20.	環保系統及設施所需的機房、管槽及氣槽	不適用
21.	複式住宅單位及洋房的中空	不適用
22.	伸出物，如空調機箱及伸出外牆超過750毫米的平台	52.213
其他項目		面積 (平方米)
23. (#)	庇護層，包括庇護層兼空中花園	不適用
24. (#)	其他伸出物	不適用
25.	公共交通總站	不適用
26. (#)	共用構築物及樓梯	不適用
27. (#)	僅供獲接納不計入總樓面面積的樓層使用的樓梯、升降機槽及垂直管道的水平面積	不適用
28. (#)	公眾通道	不適用
29.	因建築物後移導致的覆蓋面積	不適用
額外總樓面面積		面積 (平方米)
30.	額外總樓面面積	不適用

註: 上述表格是根據屋宇署所發出的《認可人士、註冊結構工程師及註冊岩土工程師作業備考》ADM-2規定的要求而制訂的。屋宇署會按實際需要不時更改有關要求。

#### 有關建築物的環境評估及期數的公用部分的預計能量表現或消耗的資料

本期數的經批准一般建築圖則不受由建築事務監督發出的《認可人士、註冊結構工程師及註冊岩土工程師作業備考》APP-151規定規限。本發展項目的環境評估及公用部分的預計能量表現或消耗的資料無須呈交建築事務監督，以作為批予總樓面面積寬免的先決條件。

## 29. 申請建築物總樓面面積寬免的資料

### INFORMATION IN APPLICATION FOR CONCESSION ON GROSS FLOOR AREA OF BUILDING

有關建築物的環境評估



期數的公用部分的預計能量表現或消耗

於印製售樓說明書前呈交予建築事務監督期數的公用部分的預計能量表現或消耗的最近期資料：

第 I 部分	
提供中央空調	是
提供具能源效益的設施	是
擬安裝的具能源效益的設施	高性能系數多聯式空調冷氣機在會所使用

第 II 部分: 擬興建樓宇/部分樓宇預計每年能源消耗量 <sup>(註腳1)</sup> :—					
位置	使用有關裝置的內部樓面面積 (平方米)	基線樓宇 <sup>(註腳2)</sup> 每年能源消耗量		擬興建樓宇每年能源消耗量	
		電力 千瓦小時/平方米/年	煤氣/石油氣 用量單位/平方米/年	電力 千瓦小時/平方米/年	煤氣/石油氣 用量單位/平方米/年
有使用中央屋宇裝備裝置 <sup>(註腳3)</sup> 的部分	17,192	101.62	不適用	84.67	不適用

註腳: 1. 一般來說，樓宇的預計每年每平方米能源消耗量愈低，樓宇的能源消耗愈有效。例如，如果擬興建樓宇的預計每年能源消耗量少於基線樓宇預計的每年能源消耗量，則表示擬興建樓宇的預計能源使用較基線樓宇有效。減少愈多，效能愈大。

預計每年每平方米能源消耗量〔以耗電量（千瓦小時）及煤氣/石油氣消耗量用量單位〕計算，指將發展項目的每年能源消耗總量除以使用有關裝置的內部樓面面積所得出的商，其中：(a) “每年能源消耗量”與新建樓宇BEAM Plus標準（現行版本）第4節及附錄8中的“年能源消耗”具有相同涵義；及(b) 樓宇、空間或單位的“內部樓面面積”，指外牆及/或共用牆的內壁之內表面起量度出來的樓面面積。

2. “基線樓宇”與新建樓宇BEAM Plus標準（現行版本）第4節及附錄8中的“基準建築物模型（零分標準）”具有相同涵義。

3. “中央屋宇裝備裝置”與機電工程署發出的《屋宇裝備裝置能源效益實務守則》中的涵義相同。

第 III 部分: 以下裝置乃按機電工程署公布的相關實務守則設計:—			
裝置類型		電力裝置	是
照明裝置	是	升降機及自動梯的裝置	是
空調裝置	是	以總能源為本的方法	不適用

## 29. 申請建築物總樓面面積寬免的資料

### INFORMATION IN APPLICATION FOR CONCESSION ON GROSS FLOOR AREA OF BUILDING

#### Breakdown of GFA Concessions Obtained for All Features

Latest information on breakdown of GFA concessions as shown on the general building plans submitted to and approved by the Building Authority (BA) prior to the printing of the sales brochure is tabulated below. Information marked(#) may be based on information provided by the authorized person if the sales brochure is printed prior to submission of the final amendment plans to the BA. The breakdown of GFA concessions may be subject to further changes until final amendment plans are submitted to and approved by the BA prior to the issuance of the occupation permit for the development.

Disregarded GFA under Building (Planning) Regulations 23(3)(b)		Area (m <sup>2</sup> )
1. (#)	Carpark and loading/unloading area excluding public transport terminus	6607.139
2.	<b>Plant rooms and similar services</b>	
2.1	Mandatory feature or essential plant room, area of which is limited by respective Practice Notes for Authorized Persons, Registered Structural Engineers and Registered Geotechnical Engineers (PNAP) or regulation such as lift machine room, telecommunications and broadcasting (TBE) room, refuse storage and material recovery chamber, etc.	1040.834
2.2 (#)	Mandatory feature or essential plant room, area of which is NOT limited by any PNAP or regulation such as room occupied solely by fire services installations (FSI) and equipment, meter room, transformer room, potable and flushing water tank, etc.	2363.994
2.3	Non-mandatory or non-essential plant room such as air-conditioning plant room, air handling unit (AHU) room, etc.	Not Applicable
Green Features under Joint Practice Notes 1 and 2		Area (m <sup>2</sup> )
3.	Balcony	1897.164
4.	Wider common corridor and lift lobby	Not Applicable
5.	Communal sky garden	Not Applicable
6.	Acoustic fin	33.260
7.	Wing wall, wind catcher and funnel	Not Applicable
8.	Non-structural prefabricated external wall	359.355
9.	Utility platform	22.500
10.	Noise barrier	Not Applicable
Amenity Features		Area (m <sup>2</sup> )
11.	Counter, office, store, guard room and lavatory for watchman and management staff, Owners' Corporation Office	117.840
12.	Residential Recreational facilities including void, plant room, swimming pool filtration plant room, covered walkway etc serving solely the recreational facilities	2440.355
13.	Covered landscaped and play area	85.709
14.	Horizontal screens/covered walkways, trellis	Not Applicable
15.	Larger lift shaft	Not Applicable

## 29. 申請建築物總樓面面積寬免的資料

### INFORMATION IN APPLICATION FOR CONCESSION ON GROSS FLOOR AREA OF BUILDING

Amenity Features		Area (m <sup>2</sup> )
16.	Chimney shaft	Not Applicable
17.	Other non-mandatory or non-essential plant room, such as boiler room, satellite master antenna television (SMATV) room.	Not Applicable
18. (#)	Pipe duct, air duct for mandatory feature or essential plant room	1118.652
19.	Pipe duct, air duct for non-mandatory or non-essential plant room	Not Applicable
20.	Plant room, pipe duct, air duct for environmentally friendly system and feature.	Not Applicable
21.	Void in duplex domestic flat and house	Not Applicable
22.	Projections such as air-conditioning box and platform with a projection of more than 750 mm from the external wall.	52.213
Other Exempted Items		Area (m <sup>2</sup> )
23. (#)	Refuge floor including refuge floor cum sky garden	Not Applicable
24. (#)	Other projections	Not Applicable
25.	Public transport terminus	Not Applicable
26. (#)	Party structure and common staircase	Not Applicable
27. (#)	Horizontal area of staircase, lift shaft and vertical duct solely serving floor accepted as not being accountable for GFA.	Not Applicable
28. (#)	Public passage	Not Applicable
29.	Covered set back area	Not Applicable
Bonus GFA		Area (m <sup>2</sup> )
30.	Bonus GFA	Not Applicable

Note : The above table is based on the requirements as stipulated in the Practice Note for Authorized Persons, Registered Structural Engineers and Registered Geotechnical Engineers ADM-2 issued by the Buildings Department. The Buildings Department may revise such requirements from time to time as appropriate.

#### **Environmental assessment of the building and information on the estimated energy performance or consumption for the common parts of the Phase.**

The approved general building plans of this Phase are not subject to the requirements stipulated in the Practice Note for Authorized Persons, Registered Structural Engineers and Registered Geotechnical Engineers APP-151 issued by the Building Authority. Environmental assessment and information on the estimated energy performance or consumption for the common parts of this development were not required to be submitted to the Building Authority as a prerequisite for the granting of gross floor area concessions.

## 29. 申請建築物總樓面面積寬免的資料

### INFORMATION IN APPLICATION FOR CONCESSION ON GROSS FLOOR AREA OF BUILDING

#### The Environmental Assessment of the Building



#### Estimated Energy Performance or Consumption for the Common Parts of the Phase

Latest information on the estimated energy performance or consumption for the common parts of the Phase as submitted to the Building Authority prior to the printing of the sales brochure:

Part I	
Provision of Central Air Conditioning	Yes
Provision of Energy Efficient Features	Yes
Energy Efficient Features proposed	High COP VRV A/C units at clubhouse

Part II : The predicted annual energy use of the proposed building / part of building <sup>(Note 1)</sup>					
Location	Internal Floor Area Served (m <sup>2</sup> )	Annual Energy Use of Baseline Building <sup>(Note 2)</sup>		Annual Energy Use of Proposed Building	
		Electricity kWh/ m <sup>2</sup> /annum	Town Gas / LPG unit/ m <sup>2</sup> /annum	Electricity kWh/ m <sup>2</sup> /annum	Town Gas / LPG unit/ m <sup>2</sup> /annum
Area served by central building services installation <sup>(Note 3)</sup>	17,192	101.62	Not applicable	84.67	Not applicable

Notes: 1. In general, the lower the estimated "Annual Energy Use" of the building, the more efficient the building in terms of energy use. For example, if the estimated "annual energy use of proposed building" is less than the estimated "annual energy use of baseline building", it means the predicted use of energy is more efficient in the proposed building than in the baseline building. The larger the reduction, the greater the efficiency. The predicted annual energy use per m<sup>2</sup> per annum, in terms of electricity consumption (kWh) and town gas/LPG consumption (unit) of the development by the internal floor area served, where:- (a) "total annual energy use" has the same meaning of "annual energy use" under Section 4 and Appendix 8 of the BEAM Plus for New Buildings (current version); and (b) "internal floor area", in relation to a building, a space or a unit means the floor area of all enclosed space measured to the internal faces of enclosing external and/or party walls.

2. "Baseline Building" has the same meaning as "Baseline Building Model (zero-credit benchmark)" under Section 4 and Appendix 8 of the BEAM Plus for New Building (current version).

3. "Central Building Services Installation" has the same meaning as that in the Code of Practice for Energy Efficiency of Building Services Installation issued by the electrical and Mechanical Services Department.

Part III: The following installations are designed in accordance with the relevant Codes of Practices published by the Electrical & Mechanical Services Department (EMSD)			
Type of Installations		Electrical Installations	Yes
Lighting Installations	Yes	Lift & Escalator Installations	Yes
Air Conditioning Installations	Yes	Performance-based Approach	Not applicable

# 30. 有關資料

## RELEVANT INFORMATION

### 1. 噪音消減措施

- (a) 期數將提供噪音消減措施包括隔聲屏障、隔聲簷、減音窗、減音露台及固定玻璃/固定玻璃維修窗戶。有關噪音消減措施詳情及期數內的相關單位，準買家應參考2020年3月的噪音影響評估報告(參考編號R5501\_V4.5b)(NIAR)。準買家可於售樓處開放時間內要求免費查閱噪音影響評估報告(並可於支付影印費後取得影印本)。有關減音露台(以「A.BAL」標示)、減音窗(以「A.W.」標示)及維修窗戶(以「M.W.」標示)的位置，準買家亦應參考本售樓說明書「期數的住宅物業的樓面平面圖」一節。準買家應注意隔音屏障、隔聲簷、減音窗、減音露台及固定玻璃/固定玻璃維修窗戶對相關單位景觀的影響，以及如減音窗、隔聲折疊門或維修窗戶被開啟時相關單位將可能受噪音影響。
- (b) 根據噪音影響評估報告，第三座7樓單位10主人睡房的其中一個窗戶被指定為維修窗戶(其位置於本部分最後的圖則1上以「M.W.」標示)，惟該維修窗戶並未於已批准的建築圖則及本售樓說明書「期數的住宅物業的樓面平面圖」一節內的相關平面圖中反映。期數的認可人士會將前述維修窗戶加入建築圖則並於適當時候遞交予建築事務監督審批。

### 2. 後續期數的施工

後續期數的施工期間可能會制定特別交通安排，包括但不限於更改行車通道。建築車輛亦可進入平台層及車場以進行後續期數的施工，施工期間可能對期數內住宅物業之享用，諸如景觀、噪音、沙塵及/或周邊環境方面，造成重大影響。

### 3. 放置室外冷氣機

部分室外冷氣機(不論是為該住宅單位而設或是為其他住宅單位而設)放置在室外的冷氣機平台、露台的上方、或工作平台、私人花園、私人平台或私人天台。室外冷氣機的放置可能對期數的住宅單位的享用，諸如熱氣及噪音或其他方面造成影響。有關室外冷氣機的位置，請參閱「期數的住宅物業的樓面平面圖」。

### 4. 建築裝飾

期數部分住宅單位外的外牆裝有建築裝飾，建築裝飾的燈光(如有的話)可能對部分住宅單位的享用造成影響。

### 5. 喉管

期數部分住宅單位的平台及/或露台的外牆或毗鄰平台及/或露台的外牆裝有公用喉管及/或外露喉管。部分住宅單位的景觀可能因此受到影響。有關公用喉管及外露喉管的位置，請參閱期數最新批准建築圖則。

### 6. 樹木

該地段外有很多樹圍繞屋苑。有些樹的高度可能與期數低層住宅單位的高度相若。另外，有些樹與期數某些住宅單位的距離可能很近。準買家應到有關發展地盤作實地考察，以對該發展地盤及其周邊地區環境有較佳了解。

### 7. 建築物維修系統的操作

根據公契，管理人有權不時為檢查、重建、改動、翻新、保養、清潔、油漆或裝飾公用地方及設施或進行發展項目必要的維修或減少任何對或可能對公用地方及設施或任何部分或其他業主造成影響的危害或滋擾的目的，於構成住宅單位一部分的私人花園、私人平台或私人天台之建築周邊安裝及拆除錨及其他裝置以便建築物維修系統的操作，包括但不限於吊船或其他類似裝置。吊船或其他類似裝置可以經過及/或停泊於構成住宅單位一部分的私人花園、私人平台或私人天台。

### 8. 建議額外車輛通道

根據最新的分區規劃大綱圖(OZP) 編號: S/TM/33, 在發展項目的東面, 已計劃新的道路(「該新道路」)連接青山公路及青盈路，其計劃的位置於本部分最後的圖則2上顯示。除青山公路車輛通道外，賣方已向屯門區地政處建議於該新道路上增加一個發展項目的額外車輛通道(「該額外車輛通道」)，該額外車輛通道的建議位置於本部分最後的圖則2上顯示。建議運輸署表示他們原則上不反對額外車輛通道。屯門區地政處亦初步回覆若該新道路一經落實，便會考慮有關變更車輛通道的申請。為免疑問，賣方並不保證該新道路及該額外車輛通道會於將來獲興建。

## 30. 有關資料

### RELEVANT INFORMATION

#### 1. Noise Mitigation Measures

- (a) Noise mitigation measures which will be provided in the Phase include noise barriers, acoustic fins, acoustic windows, acoustic balconies and fixed glazing/fixed glazing with maintenance windows. For details of such noise mitigation measures and related units in the Phase, prospective purchasers should refer to the Noise Impact Assessment Report dated March 2020 (Reference Number: R5501\_V4.5b) (the "NIAR"). Copy of the NIAR will be available for free inspection upon request by prospective purchasers at the sales office during its opening hours (photocopies will be available on payment of photocopying charges). Please also refer to "Floor Plans of Residential Properties in the Phase" section of this Sales Brochure for details on the location of acoustic balcony marked "A. BAL", acoustic window marked "A.W." and maintenance window marked "M.W.". Prospective purchasers should note the impact of the existence of noise barriers, acoustic fins, acoustic windows, acoustic balconies and fixed glazing/ fixed glazing with maintenance windows on the views of related units and that the related units may be affected by noise if the acoustic window, the acoustic bi-fold door or the maintenance window are opened.
- (b) According to the NIAR, one of the windows in the master bedroom of Flat 10 on 7th Floor of Tower 3 is designated as maintenance window (which location is shown and marked "M.W." on Plan 1 at the end of this section), which is currently not reflected in the approved general building plans and the relevant floor plan in the "Floor Plans of Residential Properties in the Phase" section of this Sales Brochure. The Authorized Person of the Phase will incorporate the said maintenance window into the general building plans and submit the same to the Building Authority for approval in due course.

#### 2. Construction of Subsequent Phases

There may be special traffic arrangement including but not limited to alteration of vehicular access route during the construction of subsequent phases. Construction vehicles may also enter the podium level and the car park for construction of subsequent phases. Such construction works and arrangement may materially affect the enjoyment of the residential properties in the Phase in terms of views, noise, dust and/or other aspects of the surrounding environment.

#### 3. Placement of outdoor air-conditioning units

Some outdoor air-conditioning units (either serving its own residential unit or other residential units) are placed on the air-conditioner platforms, high level of balconies, utility platforms, private gardens, private flat roofs or private roofs. The placement of the outdoor air-conditioning units may affect the enjoyment of the residential units of the Phase in terms of heat and noise or other aspects. For the locations of the outdoor air-conditioning units, please refer to "Floor Plans of Residential Properties" in the Phase.

#### 4. Architectural features

Some architectural features are installed outside the external walls of some residential units of the Phase. The illumination (if any) of the architectural features may affect the enjoyment of some residential units.

#### 5. Pipes

Some common pipes and/or exposed pipes are located on the external walls at or adjacent to the flat roofs and/or balconies of some residential units of the Phase. It is possible that the views of some residential units may be affected by these pipes. For the locations of the common pipes and the exposed pipes, please refer to the latest approved building plans of the Phase.

#### 6. Trees

There are many trees outside the lot surrounding the Estate. Some of the trees may be of similar height to the level of the lower level residential units of the Phase. In addition, some of the trees may be located close to some of the residential units of the Phase. Prospective purchasers should conduct an on-site visit for a better understanding of the development site and its surrounding environment.

#### 7. Operation of building maintenance system

Under the Deed of Mutual Covenant, the Manager shall have the right from time to time for the purposes of inspecting, rebuilding, repairing, altering, renewing, maintaining, cleaning, painting or decorating the Common Areas and Facilities or carrying out necessary repairs to the Estate or abating any hazard or nuisance which does or may affect the Common Areas and Facilities or any part thereof or other Owners to install and remove anchors and other provisions at the building perimeter of the private garden, private flat roof or private roof forming part of a Residential Unit for operation of the building maintenance system including but not limited to gondola or an equipment of the like which shall be entitled to pass through and/or rest on private garden, private flat roof or private roof forming part of a Residential Unit.

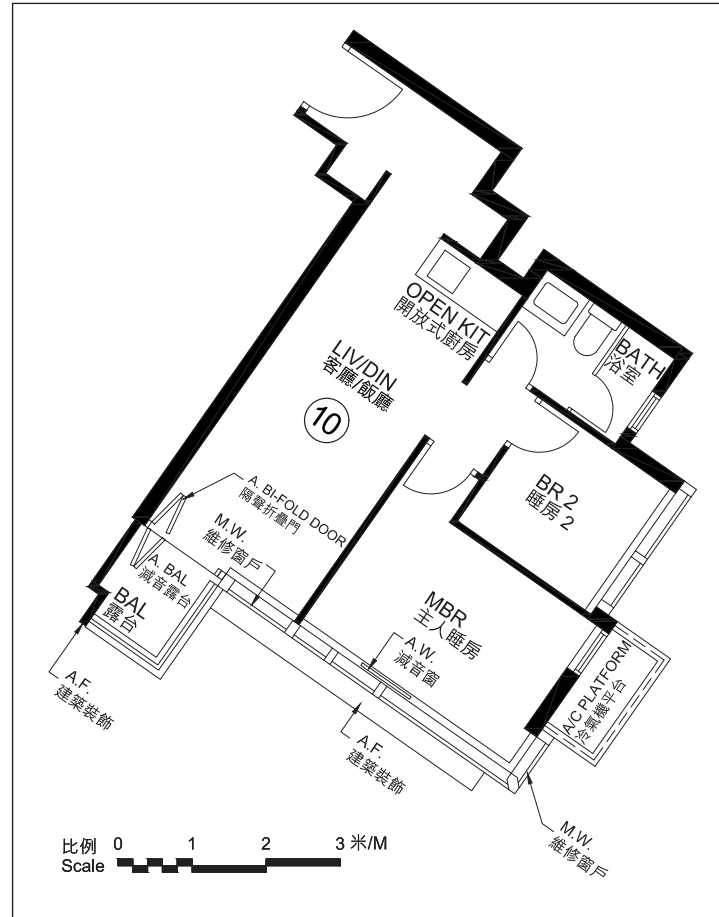
#### 8. Proposed Additional Vehicular Access

According to the latest Outline Zoning Plan (OZP) no. S/TM/33, a new road (the "New Road") has been planned along the eastern side of the development connecting Castle Peak Road and Tsing Ying Road which the proposed alignment is shown in Plan 2 at the end of this section. The vendor has proposed to the District Lands Office/Tuen Mun that an additional vehicular access to the development to be formed at the New Road (the "Additional Vehicular Access") which proposed location is shown in Plan 2 at the end of this section, in addition to the vehicular access at Castle Peak Road. The Transport Department had indicated that they have no objection in principle to the Additional Vehicular Access. District Lands Office/Tuen Mun had indicated that the application for variation of vehicular access would be considered when it is confirmed that the New Road will be constructed. For the avoidance of doubt, the vendor in no way warrants that that the New Road and the Additional Vehicular Access will be constructed in the future.

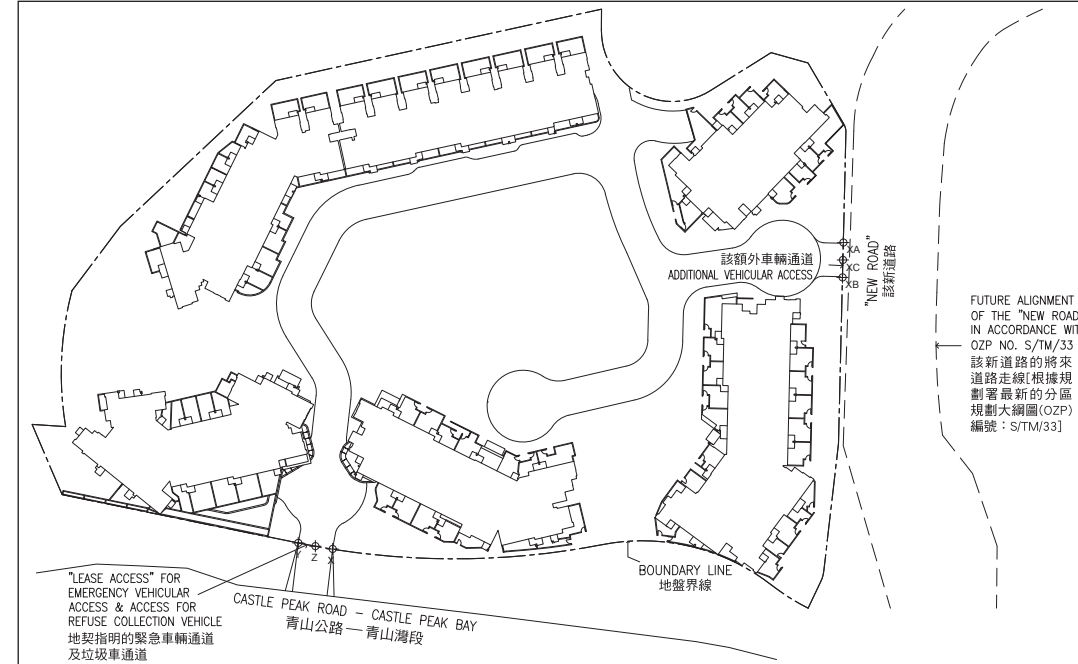
# 30. 有關資料

## RELEVANT INFORMATION

圖則 1  
Plan 1



圖則 2  
Plan 2



圖例 Legend: - - - - 地盤界線 Site Boundary Line





此版乃特意留白 This page is deliberately left in blank

## 31. 按地政總署署長同意方案要求列出的資料

### INFORMATION REQUIRED TO BE SET OUT BY THE DIRECTOR OF LANDS UNDER CONSENT SCHEME

1. 買方須於正式買賣合約下與賣方協議，除可用作按揭或押記外，買方不會於完成正式買賣合約之成交及簽立轉讓契之前，以任何方式或訂立任何協議，以達至提名任何人士接受轉讓正式買賣合約所指定的住宅物業或停車位，或轉讓該住宅物業或停車位，或轉移該住宅物業或停車位的正式買賣合約的權益。
  2. 如正式買賣合約的買方有此要求，並獲賣方（按其自己的酌情決定）同意之情況下取消正式買賣合約或買方於該正式買賣合約所承擔之責任，賣方有權保留相等於該正式買賣合約所指定的住宅物業及停車位總售價百分之五的款項。同時買方亦須額外付予賣方或付賣方（視屬何情況而定）全部就取消該正式買賣合約須付之律師費、收費及代墊付費用（包括任何須繳付之印花稅）。
  3. 賣方將會支付或已經支付（視屬何情況而定）由批地文件之日期起直至有關個別買方簽署轉讓契之日（包括簽署轉讓契當日）止，所有有關該正在興建的發展項目所處地段的未繳付地稅。
  4. 已簽署正式買賣合約的買方有權要求獲得一份有關完成興建期數所需的建築費用及專業費用總額的最新資料，以及直至該要求提出時的上一個公曆月底為止已動用及支付的建築費用及專業費用總額，並可於該要求提出及在支付不超過港幣一百元象徵式費用後獲得提供該資料的副本。
  5. (I) 有關批地文件特別批地條款第(3), (4), (5)及(6)條提及的綠色範圍請見批地文件的摘要第8, 9, 10及11段。  
(II) 有關批地文件特別批地條款第(7), (8), (9)及(10)條提及的黃色範圍請見批地文件的摘要第12, 13, 14及15段。  
(III) 有關批地文件特別批地條款第(41)(a)(i)及(41)(b)(iv)條提及的現存公用服務設施及改道公用服務設施請見批地文件的摘要第35段。  
(IV) 有關批地文件特別批地條款第(43)(a)(i)及(43)(g)(ii)條提及的渠務專用範圍及新渠務專用範圍請見批地文件的摘要第37段。  
(V) 有關批地文件特別批地條款第(49)(a)及(49)(c)條提及的綠色加交叉黑斜線範圍及外部工程請見批地文件的摘要第43段。
1. The purchaser is required to agree with the Vendor in the Agreement for Sale and Purchase ("ASP") to the effect that other than entering into a mortgage or charge, the purchaser will not nominate any person to take up the Assignment of the Residential Unit or the Parking Space specified in the ASP, sub-sell that Residential Unit or Parking Space or transfer the benefit of the ASP of that Residential Unit or Parking Space in any manner whatsoever or enter into any agreement so to do before completion of the sale and purchase and execution of the Assignment.
  2. If the Vendor, at the request of the purchaser under an ASP, agrees (at its own discretion) to cancel the ASP or the obligations of the purchaser under the ASP, the Vendor is entitled to retain the sum of five percent (5%) of the total purchase price of the Residential Unit and the Parking Space specified in the ASP and the purchaser will in addition pay or reimburse (as the case may be) to the Vendor all legal costs, charges and disbursements (including any stamp duty) in connection with the cancellation of the ASP.
  3. The Vendor will pay or has paid (as the case may be) all outstanding Government rent in respect of the land on which the Development is in the course of being erected, from the date of the Land Grant up to and including the date of the respective Assignments to the purchasers.
  4. The purchaser who has signed an ASP has the right of access to and will, upon his request, be provided with a hard copy of an updated record of information as to the total construction costs and the total professional fees to complete the Phase as well as the total construction costs and the total professional fees expended and paid as at the end of the calendar month preceding the month at which the request is made subject to payment of a nominal fee of not more than HK\$100 per request.
  5. (I) Please refer to paragraphs 8, 9, 10 and 11 of the Summary of Land Grant for the Green Area as referred to in Special Condition Nos.(3), (4), (5) and (6) of the Government Grant.  
(II) Please refer to paragraphs 12, 13, 14 and 15 of the Summary of Land Grant for the Yellow Area as referred to in Special Condition Nos.(7), (8), (9) and (10) of the Government Grant.  
(III) Please refer to paragraph 35 of the Summary of Land Grant for the Existing Utilities and the Diverted Utilities as referred to in Special Condition Nos.(41)(a)(i) and (41)(b)(iv) of the Government Grant.  
(IV) Please refer to paragraph 37 of the Summary of Land Grant for the Drainage Reserve Area and the New Drainage Reserve Area as referred to in Special Condition Nos.(43)(a)(i) and (43)(g)(ii) of the Government Grant.  
(V) Please refer to paragraph 43 of the Summary of Land Grant for the Green Cross-hatched Black Area and the Outside Works as referred to in Special Condition Nos.(49)(a) and (49)(c) of the Government Grant.



賣方就期數指定的互聯網網站的網址：[www.seacoastroyale.com.hk](http://www.seacoastroyale.com.hk)

The Address Of The Website Designated By The Vendor For The Phase: [www.seacoastroyale.com.hk](http://www.seacoastroyale.com.hk)

1. 期數及其周邊地區日後可能出現改變。
2. 本售樓說明書印製日期：2020年7月15日。

There may be future changes to the phase and the surrounding areas.  
Date of printing of this Sales Brochure: 15th July 2020.

檢視 / 修改日期 Examination / Revision Date	所作修改 Revision Made	
	頁次 Page Number	所作修改 Revision Made
2020年7月31日 31st July 2020	214 – 215, 215-1, 215-2	修訂有關資料。 Revise the Relevant Information.

此版乃特意留白 This page is deliberately left in blank

此版乃特意留白 This page is deliberately left in blank

此版乃特意留白 This page is deliberately left in blank

此版乃特意留白 This page is deliberately left in blank



此版乃特意留白 This page is deliberately left in blank



